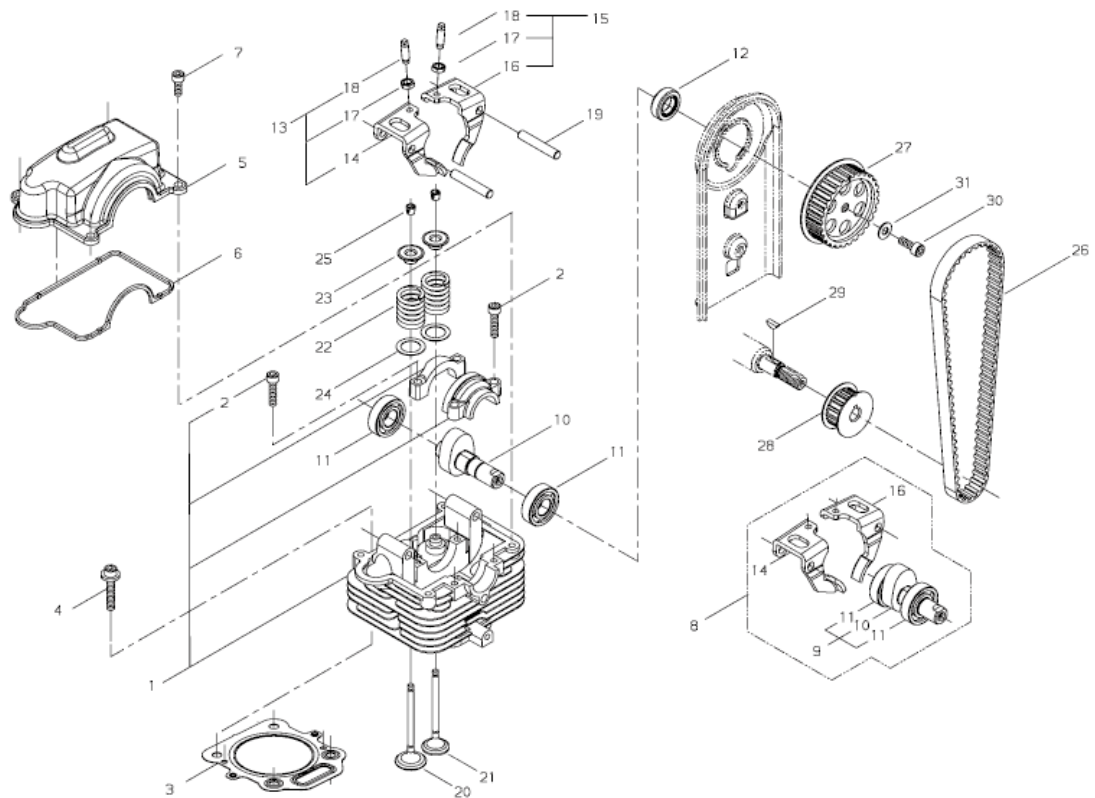
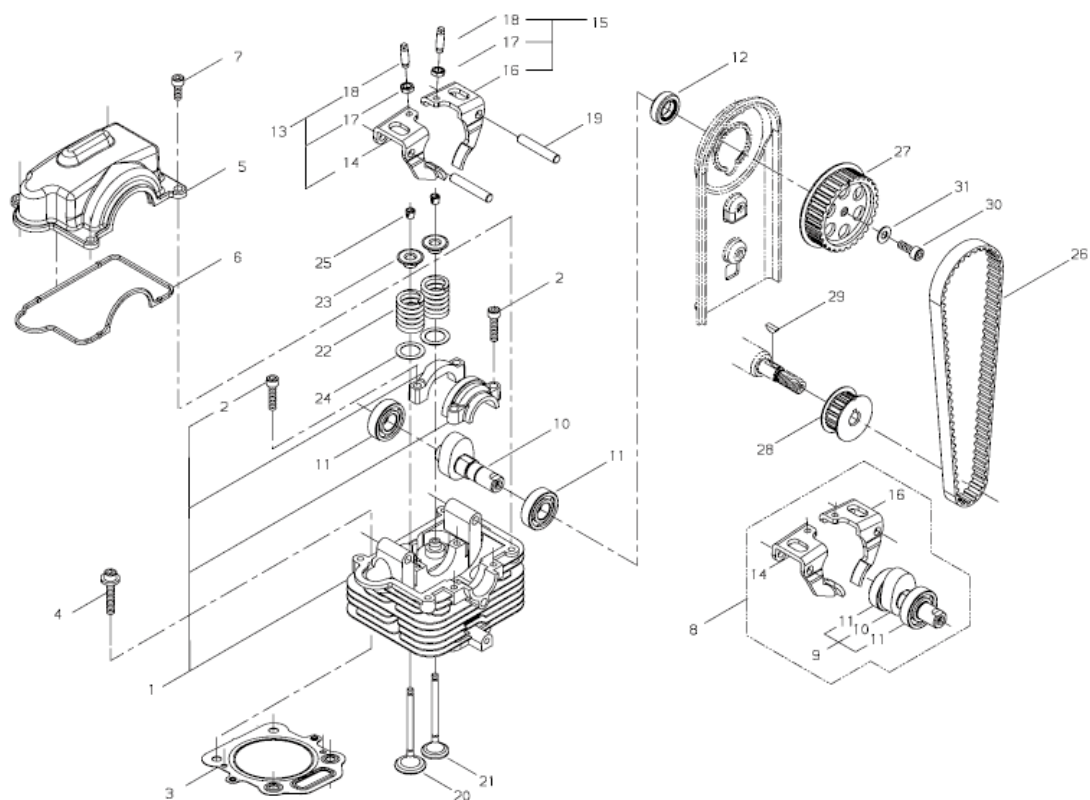




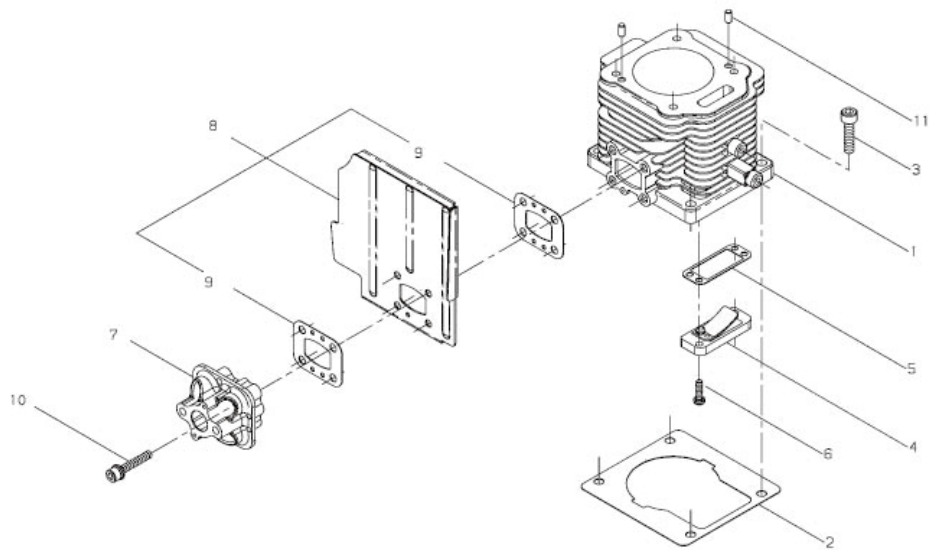
PARTS CATALOGUE
EB8520RT/EC2



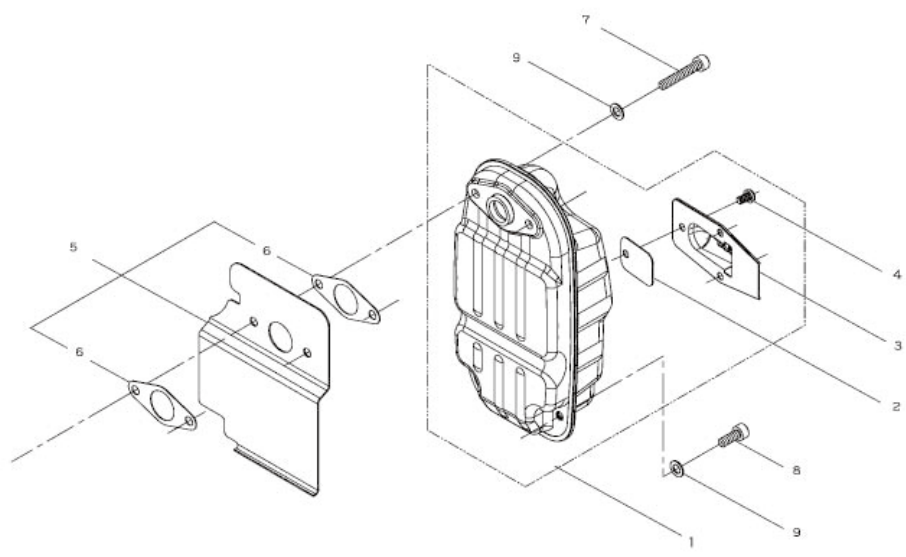
KEY	LV	PART NUMBER	Q'TY	DESCRIPTION	REMARKS
1		68913-11023	1	CYLINDER HEAD ASSY	
2		01020-05220	4	BOLT	
3		68913-11260	1	GASKET	
4		11035-06350	4	FLANGE BOLT	
5		68900-11271	1	ROCKER ARM COVER	
6		68900-11281	1	GASKET	
7		01020-05160	4	BOLT	
8		68900-98390	1	CAM KIT	
9	+	68900-13010	1	CAM SHAFT COMP	
10	++	68900-13110	1	CAM SHAFT	
11	++	02030-06001	2	BEARING	
12		62901-42260	1	OIL SEAL	
13		68900-13031	1	LOCKER ARM-A	
14	+	68900-13121	1	ROCKER ARM	
15		68900-13021	1	LOCKER ARM-A	
16	+	68900-13131	1	ROCKER ARM	
17	+	62901-44231	2	NUT	
18	+	68900-13140	2	ADJUST SCREW	
19		12492-60350	2	ROLLER	
20		68900-11210	1	INTAKE VALVE	
21		68900-11220	1	EXHAUST VALVE	
22		68900-11230	2	VALVE SPRING	
23		68900-11240	2	RETAINER	
24		68900-11330	2	PLATE	



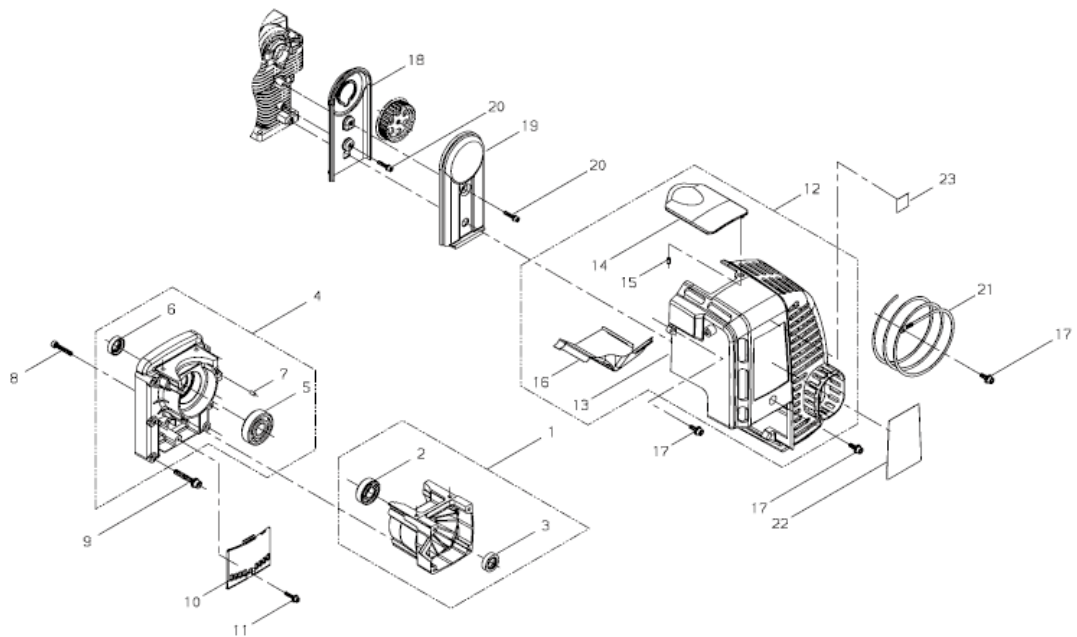
KEY	LV	PART NUMBER	Q'TY	DESCRIPTION	REMARKS
25		68900-11250	4	COTTER	
26		68900-13150	1	BELT	
27		68900-13160	1	CAM PULLEY	
28		68900-13170	1	CRANK PULLEY	
29		12408-03100	1	KEY	
30		01020-05140	1	BOLT	
31		01612-00500	1	WASHER	



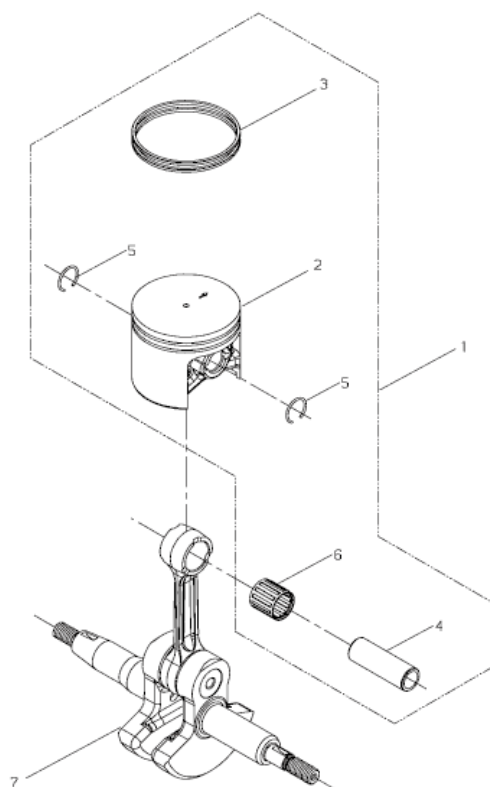
KEY	LV	PART NUMBER	Q'TY	DESCRIPTION	REMARKS
1		68913-12111	1	CYLINDER	
2		68900-12121	1	GASKET	
3		01020-06250	4	BOLT	
4		68900-12310	1	REED VALVE ASSY	
5		68900-12320	1	GASKET	
6		01210-04140	2	SCREW	
7		68242-12210	1	INSULATOR	
8		68900-12333	1	BAFFLE PLATE COMP	
9		68900-12220	2	GASKET	
10		11022-05305	4	BOLT M5*30	
11		12492-40080	2	ROLLER	



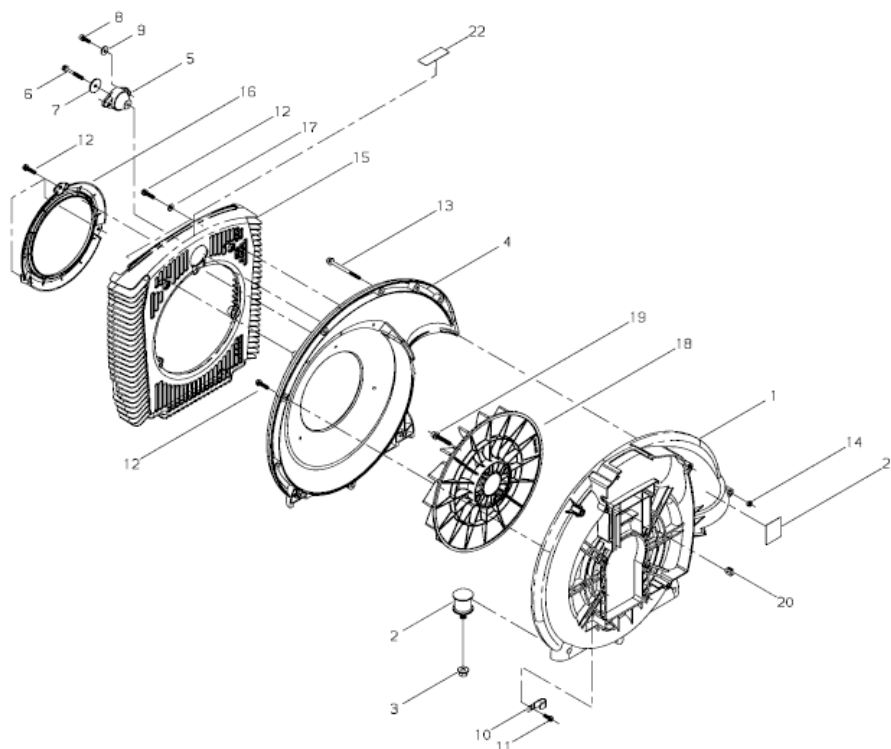
KEY	LV	PART NUMBER	Q'TY	DESCRIPTION	REMARKS
1		68900-15011	1	MUFFLER ASSY	
2	+	68900-15130	1	SCREEN	
3	+	68900-15160	1	TAIL PLATE	
4	+	01210-05086	3	SCREW	
5		68900-15210	1	GASKET	
6	+	68900-15320	2	GASKET	
7		01020-06355	2	BOLT	
8		01020-06160	2	BOLT	
9		01610-06080	4	WASHER	



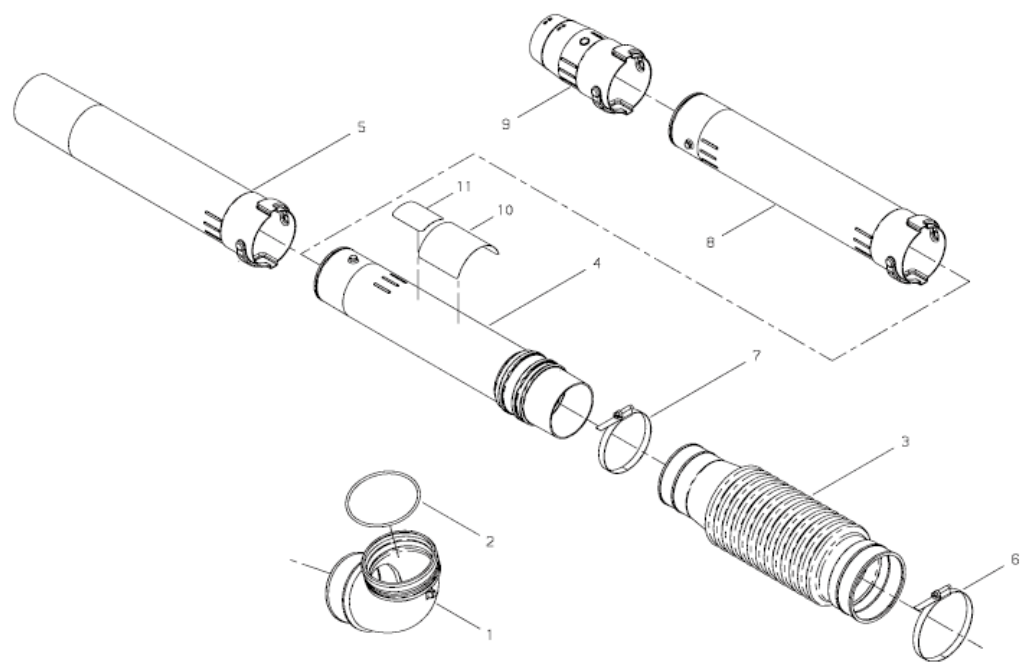
KEY	LV	PART NUMBER	Q'TY	DESCRIPTION	REMARKS
1		68913-21010	1	CRANKCASE,S-COMP	
2		12900-62020	1	BEARING	
3		12310-12000	1	OIL SEAL	
4		68913-21020	1	CRANKCASE,M-COMP	
5		02030-06303	1	BEARING	
6		12310-12000	1	OIL SEAL	
7		12492-40080	2	ROLLER	
8		01020-05300	4	BOLT	
9		11060-06400	6	BOLT ADHESIVE	
10		68900-21311	1	IGNITION COIL COVER	
11		11024-04200	1	BOLT SW	
12		68900-31321	1	ENGINE COVER COMP	
13	+	68900-31110	1	ENGINE COVER	
14	+	68900-31311	1	GROMMET	
15	+	02427-40085	1	PIN	
16	+	68900-31331	1	PLATE	
17		11024-05160	4	BOLT PM SPW	
18		68900-32110	1	BELT CASE	
19		68900-32120	1	BELT COVER	
20		11022-05120	2	BOLT SPW	
21		14395-09100	1	LEAD WIRE	
22		68913-91330	1	LABEL TRADE	
23		19402-00205	1	LABEL CAUTION	



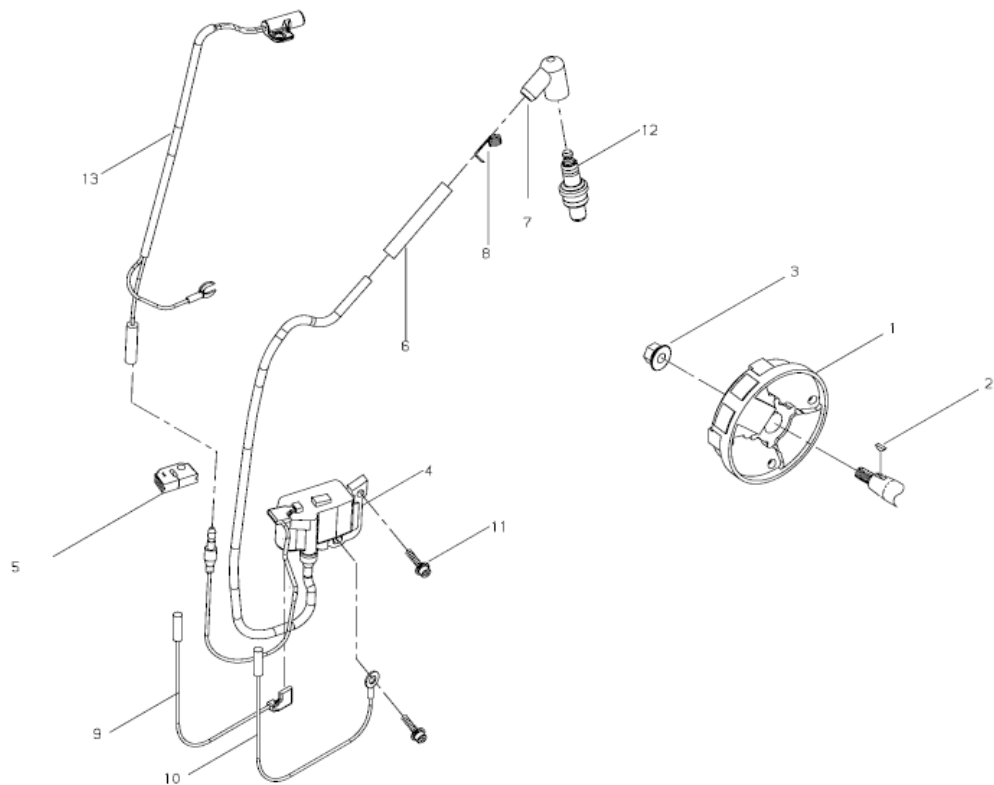
KEY	LV	PART NUMBER	Q'TY	DESCRIPTION	REMARKS
1		68900-98380	1	PISTON SET	
2	+	68900-41110	1	PISTON	
3	+	68900-41120	2	PISTON RING	
4	+	22169-41220	1	PISTON PIN	
5	+	22155-41230	2	SNAP RING	
6	+	22155-41281	1	BEARING SE	
7		68900-42012	1	CRANK SHAFT	



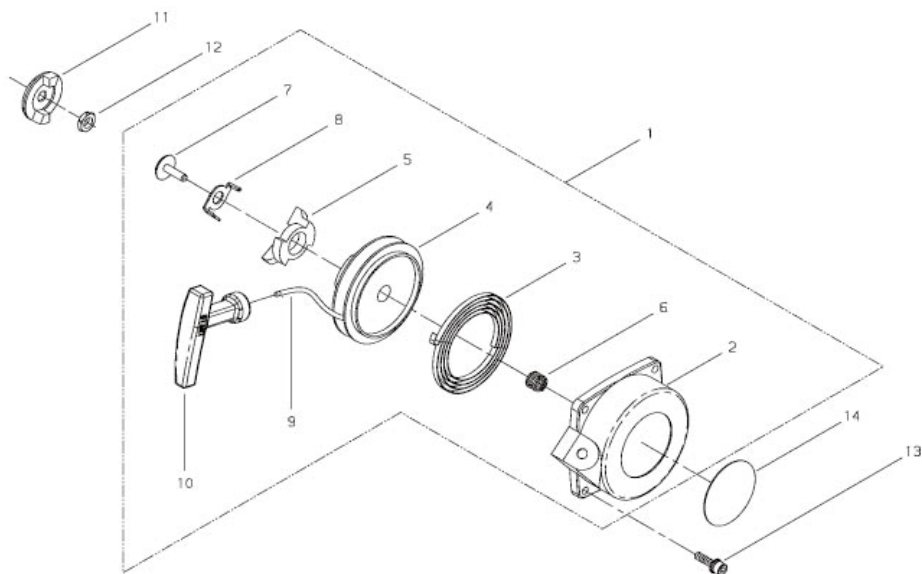
KEY	LV	PART NUMBER	Q'TY	DESCRIPTION	REMARKS
1		68900-61113	1	VOLUTE CASE	
2		68206-61320	2	AV RUBBER	
3		11526-06202	2	FLANGE NUT	
4		68900-61121	1	VOLUTE COVER	
5		68206-61330	1	AV RUBBER	
6		68206-61340	1	BOLT TAPPING	
7		15401-20009	1	COLLAR	
8		11020-05160	2	BOLT SW	
9		15401-10010	2	COLLAR	
10		68206-71370	1	CLAMP	
11		01280-05142	1	SCREW TAPPING	
12		70140-31480	14	BOLT PC	
13		11024-05700	2	BOLT SW	
14		11500-05001	2	NUT	
15		68913-61131	1	INTAKE COVER	
16		68900-61310	1	FUNNEL	
17		01613-05080	2	WASHER	
18		17343-07001	1	FAN	
19		11024-06351	4	BOLT SW	
20		22100-31531	1	GROMMET	
21		19404-00035	1	LABEL DECIBEL	
22		19402-00148	1	LABEL,CAUTION	



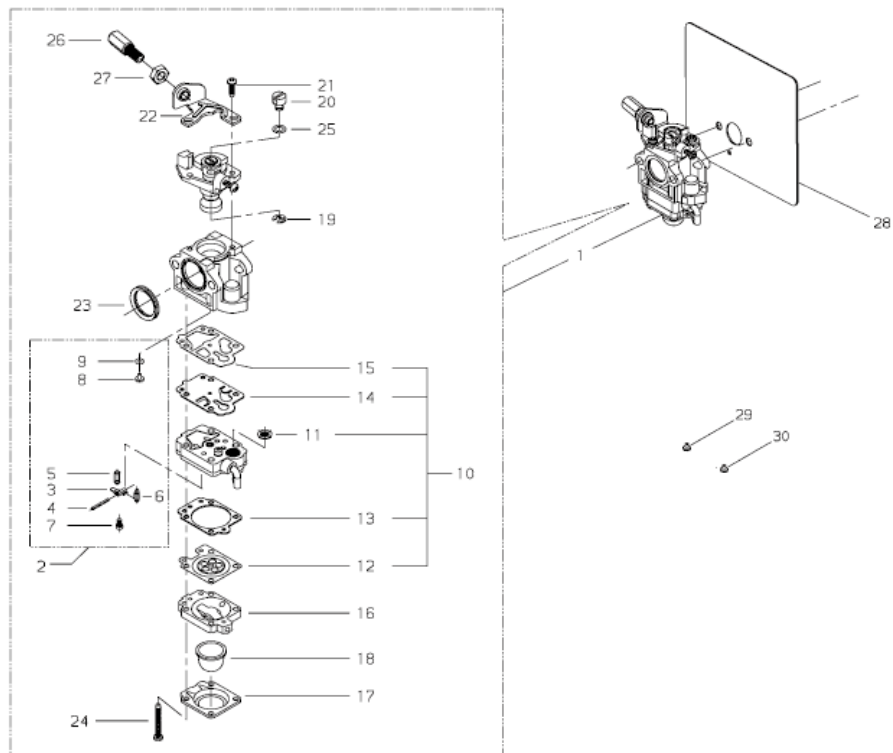
KEY	LV	PART NUMBER	Q'TY	DESCRIPTION	REMARKS
1		68900-63111	1	BEND PIPE	
2		68900-63330	1	O RING	
3		68900-63120	1	FLEXIBLE PIPE	
4		68900-63130	1	JOINT PIPE	
5		68900-63150	1	NOZZLE	
6		68900-63340	1	CLAMP	
7		68900-63351	1	CLAMP	
8		68900-63140	1	PIPE	
9		68900-63360	1	NOZZLE	
10		68913-91340	1	LABEL,TRADE	
11		19402-00336	1	LABEL,CAUTION	



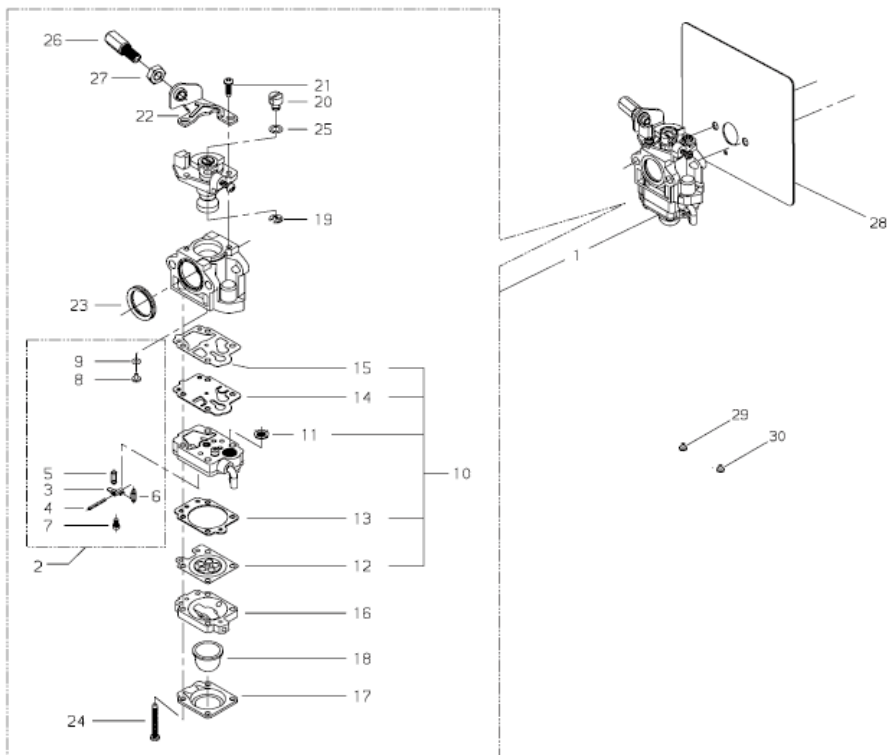
KEY	LV	PART NUMBER	Q'TY	DESCRIPTION	REMARKS
1		68913-71111	1	ROTOR	
2		12408-03100	1	KEY	
3		20035-71220	1	NUT	
4		68913-71021	1	COIL ASSY	
5		68900-71311	1	GROMMET	
6		70168-71660	1	TUBE	
7		62901-71250	1	PLUG CAP	
8		22154-72230	1	TERMINAL, SPARKPLUG	
9		14350-01701	1	LEAD WIRE	
10		14350-11601	1	LEAD WIRE	
11		11024-04200	2	BOLT SW	
12		13001-10005	1	PLIG	
13		68913-71311	1	SENSOR	



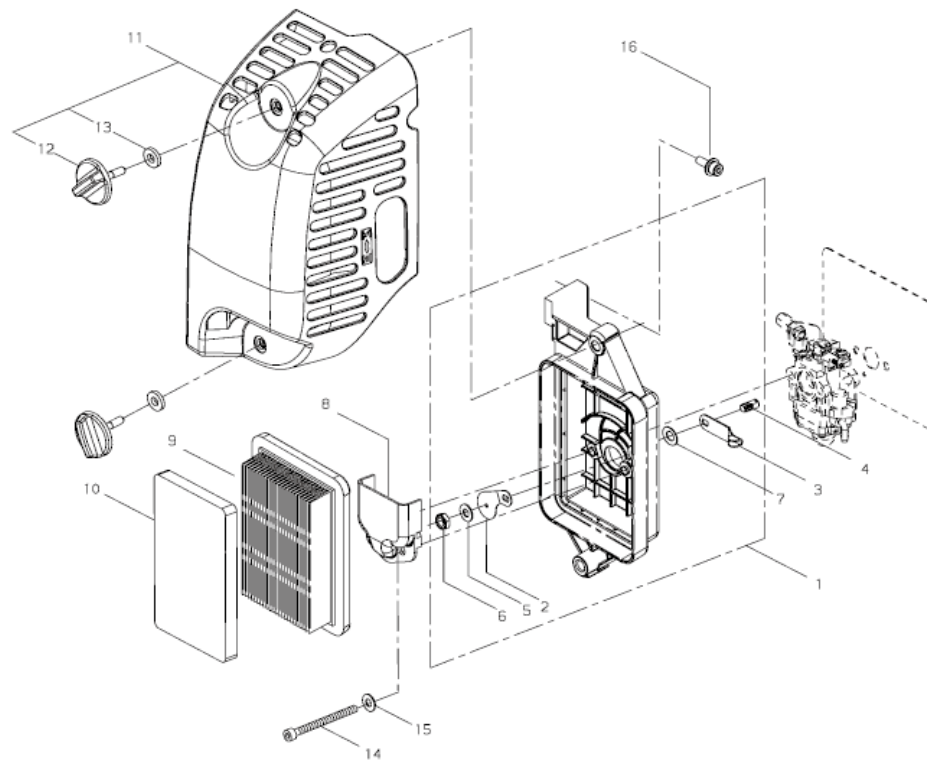
KEY	LV	PART NUMBER	Q'TY	DESCRIPTION	REMARKS
1		68900-75011	1	RECOIL STARTER ASSY	
2	+	68900-75110	1	STARTER CASE	
3	+	68900-75130	1	RECOIL SPRING	
4	+	68900-75120	1	REEL	
5	+	68900-75310	1	DOG	
6	+	68900-75320	1	BRAKE SPRING	
7	+	68900-75330	1	SCREW	
8	+	68900-75340	1	RETAINER	
9	+	68900-75140	1	ROPE	
10	+	68900-75150	1	KNOB	
11		68900-75210	1	STARTER PULLEY	
12		01511-08051	1	NUT	
13		11022-05200	4	BOLT SPW	
14		19420-00070	1	LABEL TRADE	



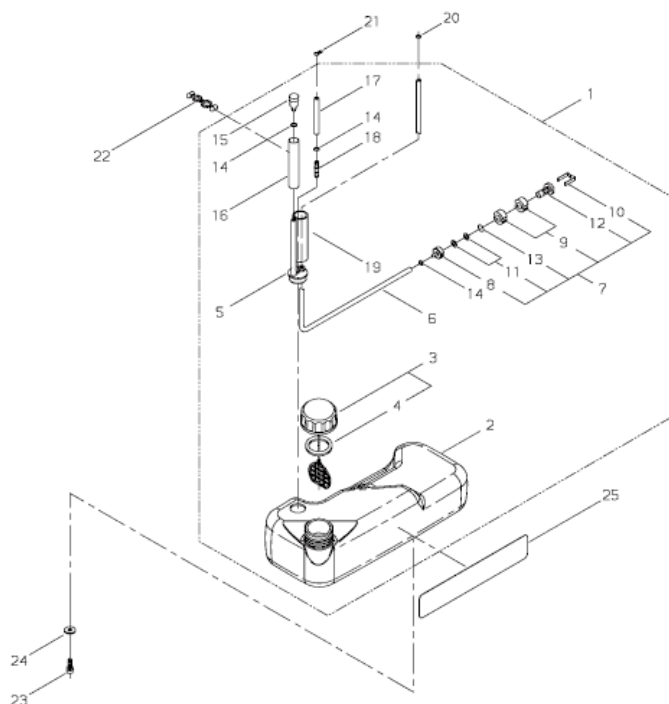
KEY	LV	PART NUMBER	Q'TY	DESCRIPTION	REMARKS
1		68913-81010	1	CARBURETOR ASSY	
2	+	68915-98330	1	VALVE-S	
3	+	22100-81230	1	LEVER, METERING	
4	+	22100-81250	1	PIN	
5	+	72933-81270	1	SPRING	
6	+	20036-81440	1	VALVE	
7	+	20016-81450	1	SCREW	
8	+	68913-81310	1	MAIN JET	
9	+	70097-81220	1	O-RING	
10	+	60902-98030	1	GASKRT	
11	+	70030-81380	1	SCREEN	
12	+	37013-81310	1	DIAPHRAGM	
13	+	20016-81280	1	GASKET	
14	+	70097-81320	1	DIAPHRAGM	
15	+	70097-81310	1	GASKET,PUMP	
16	+	20016-81420	1	PUMP BASE COMP	
17	+	20016-81510	1	PUMP COVER	
18	+	20036-81670	1	PRIMER PUMP	
19	+	20036-81195	1	E RING	
20	+	72933-81450	1	SWIVEL	
21	+	70097-81290	2	SCREW	
22	+	20089-81130	1	BRACKET	
23	+	72933-81250	1	RING GASKET	
24	+	20016-81140	4	SCREW	



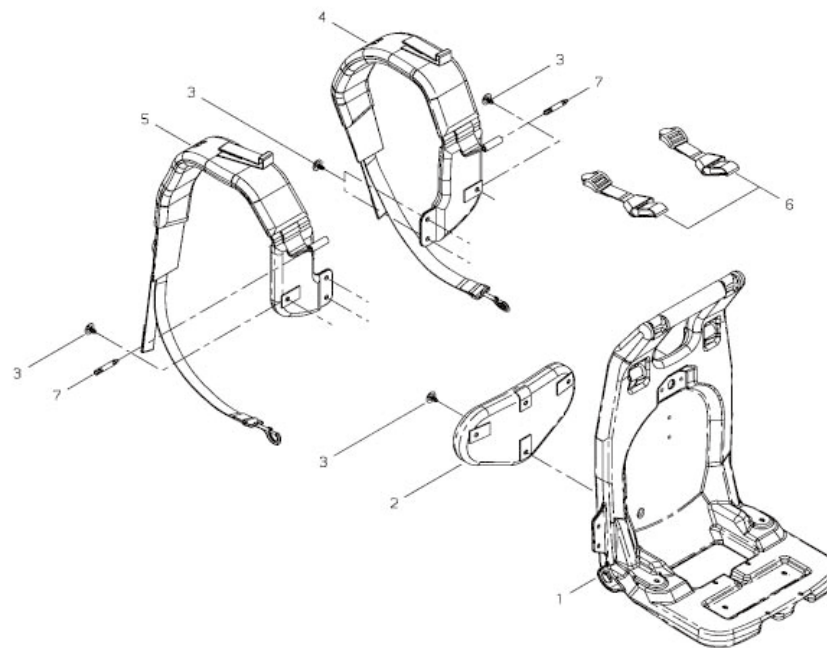
KEY	LV	PART NUMBER	Q'TY	DESCRIPTION	REMARKS
25	+	20089-81185	1	WASHER	
26	+	20089-81110	1	CABLE ADJUSTER	
27	+	20036-81120	1	NUT	
28		68900-81210	1	GASKET	
29		68915-98310	1	MAIN JET	
30		68206-98350	1	MAIN JET	



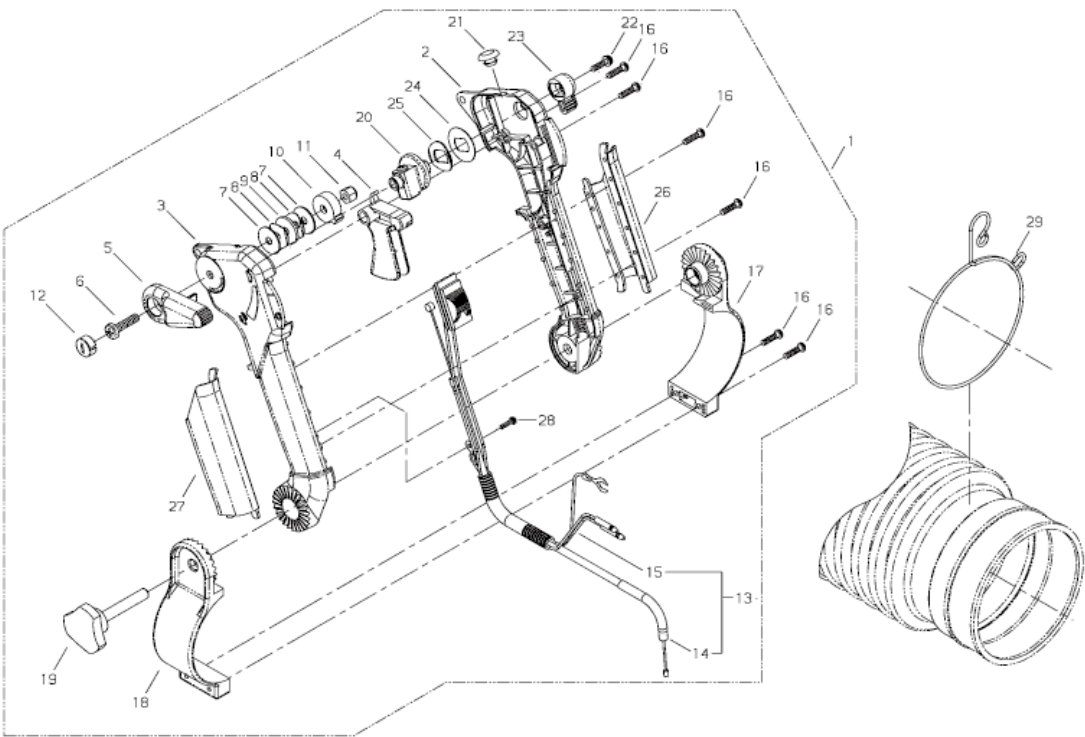
KEY	LV	PART NUMBER	Q'TY	DESCRIPTION	REMARKS
1		68913-82011	1	CLEANER BODY ASSY	
2	+	20018-81711-B	1	CHOKE PLATE	
3	+	20870-82120	1	CHOKE LEVER	
4	+	20110-82140	1	CHOKE SHAFT	
5	+	01600-06151	1	SPRING WASHER	
6	+	11524-06211	1	U NUT	
7	+	20024-81790	1	CONE WASHER	
8		68900-82311	1	PLATE	
9		68242-82120	1	FILTER	
10		68242-82310	1	PREFILTER	
11		68913-82030	1	CLEANER COVER ASSY	
12	+	22182-31220	2	KNOB, CLEANER LID	
13	+	23627-21220	2	COLLAR	
14		01020-05705	2	BOLT	
15		01612-00500	2	WASHER	
16		11022-05200	1	BOLT SPW	



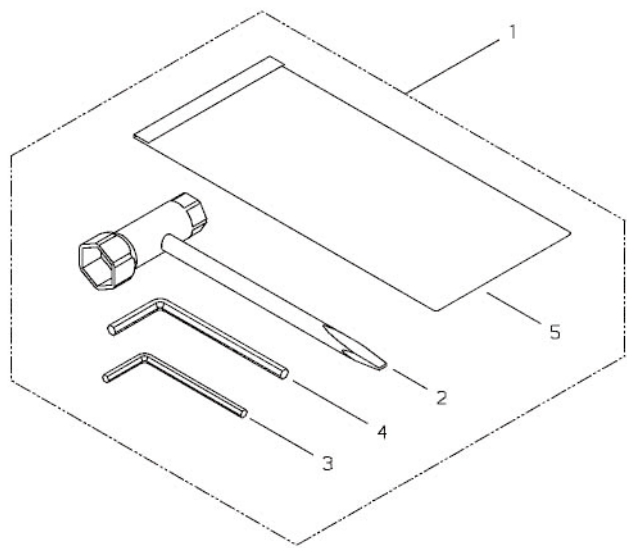
KEY	LV	PART NUMBER	Q'TY	DESCRIPTION	REMARKS
1		68913-85010	1	FUEL TANK ASSY	
2	+	68206-85110	1	FUEL TANK	
3	+	68204-85020	1	FUEL CAP ASSY	
4	++	20000-85221	1	GASKET	
5	+	72933-85350	1	GROMMET	
6	+	68913-85310	1	FUEL PIPE	
7	+	22115-85401	1	FUEL FILTER	
8	+	22128-85410	1	FUEL LINE WEIGHT	
9	+	22128-85421	2	ELEMENT,STRAINER	
10	+	22128-85440	1	CLIP FILTER	
11	+	22118-85460	2	ELEMENT	
12	+	22128-85470	1	SLEEVE	
13	+	22128-85480	1	RING	
14	+	20020-85540	3	CLIP	
15	+	20035-85522	1	VALVE	
16	+	72935-85530	1	PIPE	
17	+	68913-85320	1	PIPE	
18	+	72933-85620	1	JOINT	
19	+	68913-85330	1	PIPE	
20		20020-85540	1	CLIP	
21		37013-85310	1	CLIP	
22		72935-85550	1	CLIP	
23		11060-05140	2	BOLT ADHESIVE	
24		15401-10010	2	COLLAR	
25		68913-91320	1	LABEL,TRADE	



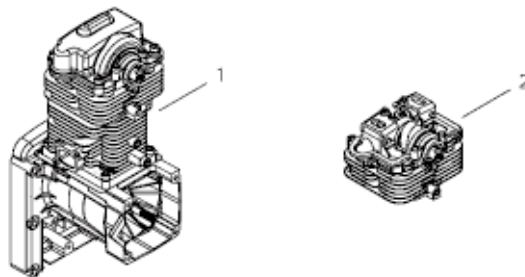
KEY	LV	PART NUMBER	Q'TY	DESCRIPTION	REMARKS
1		68913-86111	1	FRAME	
2		68913-86311	1	PAD	
3		68913-86321	8	CLIP	
4		68913-87011	1	BAND,RIGHT ASSY	
5		68913-87021	1	BAND,LEFT ASSY	
6		68913-87310	2	BAND	
7		68913-87320	2	CLIP	



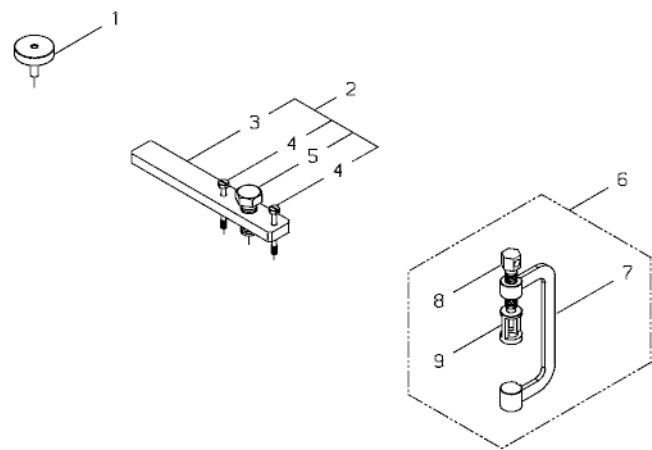
KEY	LV	PART NUMBER	Q'TY	DESCRIPTION	REMARKS
25	+	68209-84530	1	ADJ SPRING	
26	+	68209-84541	1	GRIP	
27	+	68209-84551	1	GRIP	
28	+	68209-84561	1	SCREW	
29		68901-84311	1	CLAMP	



KEY	LV	PART NUMBER	Q'TY	DESCRIPTION	REMARKS
1		68900-92310	1	TOOL SET	
2	+	22580-91180	1	PLUG WRENCH	
3	+	09026-04001	1	HEXAWRENCH	
4	+	09026-05001	1	HEXAWRENCH 6MM	
5	+	19639-01100	1	POLY BAG	



KEY	LV	PART NUMBER	Q'TY	DESCRIPTION	REMARKS
1		68915-98340	1	SHORT BLOCK	
2		68915-98350	1	CYLINDER HEAD KIT	



KEY	LV	PART NUMBER	Q'TY	DESCRIPTION	REMARKS
1		68900-98310	1	ADJUST WRENCH	
2		68900-98320	1	PULLER ASSY	
3	+	68900-98330	1	LEVER	
4	+	22100-96121	1	CENTER BOLT	
5	+	22102-96130	2	BOLT	
6		68900-98340	1	SPRING COMPRESSOR	
7	+	68900-98350	1	FRAME	
8	+	68900-98360	1	SHAFT BOLT	
9	+	68900-98370	1	ADAPTER	

Index					
Parts Number	Key No.	Parts Number	Key No.	Parts Number	Key No.
01020-05140	1 - 30	14395-09100	4 - 21	22580-91180	15 - 2
01020-05160	1 - 7	15401-10010	6 - 9	23627-21220	11 - 13
01020-05220	1 - 2	15401-10010	12 - 24	37013-81310	10 - 12
01020-05300	4 - 8	15401-20009	6 - 7	37013-85310	12 - 21
01020-05705	11 - 14	17343-07001	6 - 18	60902-98030	10 - 10
01020-06160	3 - 8	19402-00148	6 - 22	62901-42260	1 - 12
01020-06250	2 - 3	19402-00205	4 - 23	62901-44231	1 - 17
01020-06355	3 - 7	19402-00336	7 - 11	62901-71250	8 - 7
01210-04140	2 - 6	19404-00035	6 - 21	68204-85020	12 - 3
01210-05086	3 - 4	19420-00070	9 - 14	68206-61320	6 - 2
01280-05142	6 - 11	19639-01100	15 - 5	68206-61330	6 - 5
01511-08051	9 - 12	20000-85221	12 - 4	68206-61340	6 - 6
01600-06151	11 - 5	20016-81140	10 - 24	68206-71370	6 - 10
01610-06080	3 - 9	20016-81280	10 - 13	68206-85110	12 - 2
01612-00500	1 - 31	20016-81420	10 - 16	68206-98350	10 - 30
01612-00500	11 - 15	20016-81450	10 - 7	68209-84011	14 - 1
01613-05080	6 - 17	20016-81510	10 - 17	68209-84321	14 - 2
02030-06001	1 - 11	20018-81711-B	11 - 2	68209-84331	14 - 3
02030-06303	4 - 5	20020-85540	12 - 14	68209-84340	14 - 4
02427-40085	4 - 15	20020-85540	12 - 20	68209-84350	14 - 5
09026-04001	15 - 3	20024-81790	11 - 7	68209-84360	14 - 6
09026-05001	15 - 4	20035-71220	8 - 3	68209-84370	14 - 7
11020-05160	6 - 8	20035-85522	12 - 15	68209-84380	14 - 8
11022-05120	4 - 20	20036-81120	10 - 27	68209-84390	14 - 9
11022-05200	9 - 13	20036-81195	10 - 19	68209-84400	14 - 10
11022-05200	11 - 16	20036-81440	10 - 6	68209-84410	14 - 11
11022-05305	2 - 10	20036-81670	10 - 18	68209-84420	14 - 12
11024-04200	4 - 11	20089-81110	10 - 26	68209-84430	14 - 13
11024-04200	8 - 11	20089-81130	10 - 22	68209-84440	14 - 16
11024-05160	4 - 17	20089-81185	10 - 25	68209-84450	14 - 17
11024-05700	6 - 13	20110-82140	11 - 4	68209-84460	14 - 18
11024-06351	6 - 19	20870-82120	11 - 3	68209-84470	14 - 19
11035-06350	1 - 4	22100-31531	6 - 20	68209-84480	14 - 20
11060-05140	12 - 23	22100-81230	10 - 3	68209-84490	14 - 21
11060-06400	4 - 9	22100-81250	10 - 4	68209-84500	14 - 22
11500-05001	6 - 14	22100-96121	17 - 4	68209-84510	14 - 23
11524-06211	11 - 6	22102-96130	17 - 5	68209-84520	14 - 24
11526-06202	6 - 3	22115-85401	12 - 7	68209-84530	14 - 25
12310-12000	4 - 3	22118-85460	12 - 11	68209-84541	14 - 26
12310-12000	4 - 6	22128-85410	12 - 8	68209-84551	14 - 27
12408-03100	1 - 29	22128-85421	12 - 9	68209-84561	14 - 28
12408-03100	8 - 2	22128-85440	12 - 10	68209-84570	14 - 14
12492-40080	2 - 11	22128-85470	12 - 12	68209-84580	14 - 15
12492-40080	4 - 7	22128-85480	12 - 13	68242-12210	2 - 7
12492-60350	1 - 19	22154-72230	8 - 8	68242-82120	11 - 9
12900-62020	4 - 2	22155-41230	5 - 5	68242-82310	11 - 10
13001-10005	8 - 12	22155-41281	5 - 6	68900-11210	1 - 20
14350-01701	8 - 9	22169-41220	5 - 4	68900-11220	1 - 21
14350-11601	8 - 10	22182-31220	11 - 12	68900-11230	1 - 22

Index					
Parts Number	Key No.	Parts Number	Key No.	Parts Number	Key No.
68900-11240	1 - 23	68900-75110	9 - 2	68913-91340	7 - 10
68900-11250	1 - 25	68900-75120	9 - 4	68915-98310	10 - 29
68900-11271	1 - 5	68900-75130	9 - 3	68915-98330	10 - 2
68900-11281	1 - 6	68900-75140	9 - 9	68915-98340	16 - 1
68900-11330	1 - 24	68900-75150	9 - 10	68915-98350	16 - 2
68900-12121	2 - 2	68900-75210	9 - 11	70030-81380	10 - 11
68900-12220	2 - 9	68900-75310	9 - 5	70097-81220	10 - 9
68900-12310	2 - 4	68900-75320	9 - 6	70097-81290	10 - 21
68900-12320	2 - 5	68900-75330	9 - 7	70097-81310	10 - 15
68900-12333	2 - 8	68900-75340	9 - 8	70097-81320	10 - 14
68900-13010	1 - 9	68900-81210	10 - 28	70140-31480	6 - 12
68900-13021	1 - 15	68900-82311	11 - 8	70168-71660	8 - 6
68900-13031	1 - 13	68900-92310	15 - 1	72933-81250	10 - 23
68900-13110	1 - 10	68900-98310	17 - 1	72933-81270	10 - 5
68900-13121	1 - 14	68900-98320	17 - 2	72933-81450	10 - 20
68900-13131	1 - 16	68900-98330	17 - 3	72933-85350	12 - 5
68900-13140	1 - 18	68900-98340	17 - 6	72933-85620	12 - 18
68900-13150	1 - 26	68900-98350	17 - 7	72935-85530	12 - 16
68900-13160	1 - 27	68900-98360	17 - 8	72935-85550	12 - 22
68900-13170	1 - 28	68900-98370	17 - 9		
68900-15011	3 - 1	68900-98380	5 - 1		
68900-15130	3 - 2	68900-98390	1 - 8		
68900-15160	3 - 3	68901-84311	14 - 29		
68900-15210	3 - 5	68913-11023	1 - 1		
68900-15320	3 - 6	68913-11260	1 - 3		
68900-21311	4 - 10	68913-12111	2 - 1		
68900-31110	4 - 13	68913-21010	4 - 1		
68900-31311	4 - 14	68913-21020	4 - 4		
68900-31321	4 - 12	68913-61131	6 - 15		
68900-31331	4 - 16	68913-71021	8 - 4		
68900-32110	4 - 18	68913-71111	8 - 1		
68900-32120	4 - 19	68913-71311	8 - 13		
68900-41110	5 - 2	68913-81010	10 - 1		
68900-41120	5 - 3	68913-81310	10 - 8		
68900-42012	5 - 7	68913-82011	11 - 1		
68900-61113	6 - 1	68913-82030	11 - 11		
68900-61121	6 - 4	68913-85010	12 - 1		
68900-61310	6 - 16	68913-85310	12 - 6		
68900-63111	7 - 1	68913-85320	12 - 17		
68900-63120	7 - 3	68913-85330	12 - 19		
68900-63130	7 - 4	68913-86111	13 - 1		
68900-63140	7 - 8	68913-86311	13 - 2		
68900-63150	7 - 5	68913-86321	13 - 3		
68900-63330	7 - 2	68913-87011	13 - 4		
68900-63340	7 - 6	68913-87021	13 - 5		
68900-63351	7 - 7	68913-87310	13 - 6		
68900-63360	7 - 9	68913-87320	13 - 7		
68900-71311	8 - 5	68913-91320	12 - 25		
68900-75011	9 - 1	68913-91330	4 - 22		

YAMABIKO CORPORATION

7-2 SUEHIROCHO 1-CHOME, OHME, TOKYO 198-8760, JAPAN
PHONE: 81-428-32-6118. FAX: 81-428-32-6145.

shindaiwa®