

# **shindaiwa**

## **PARTS PRICE LIST**

<b>C 3 5 0</b>
----------------

**Shindaiwa Kogyo Co.,Ltd.**

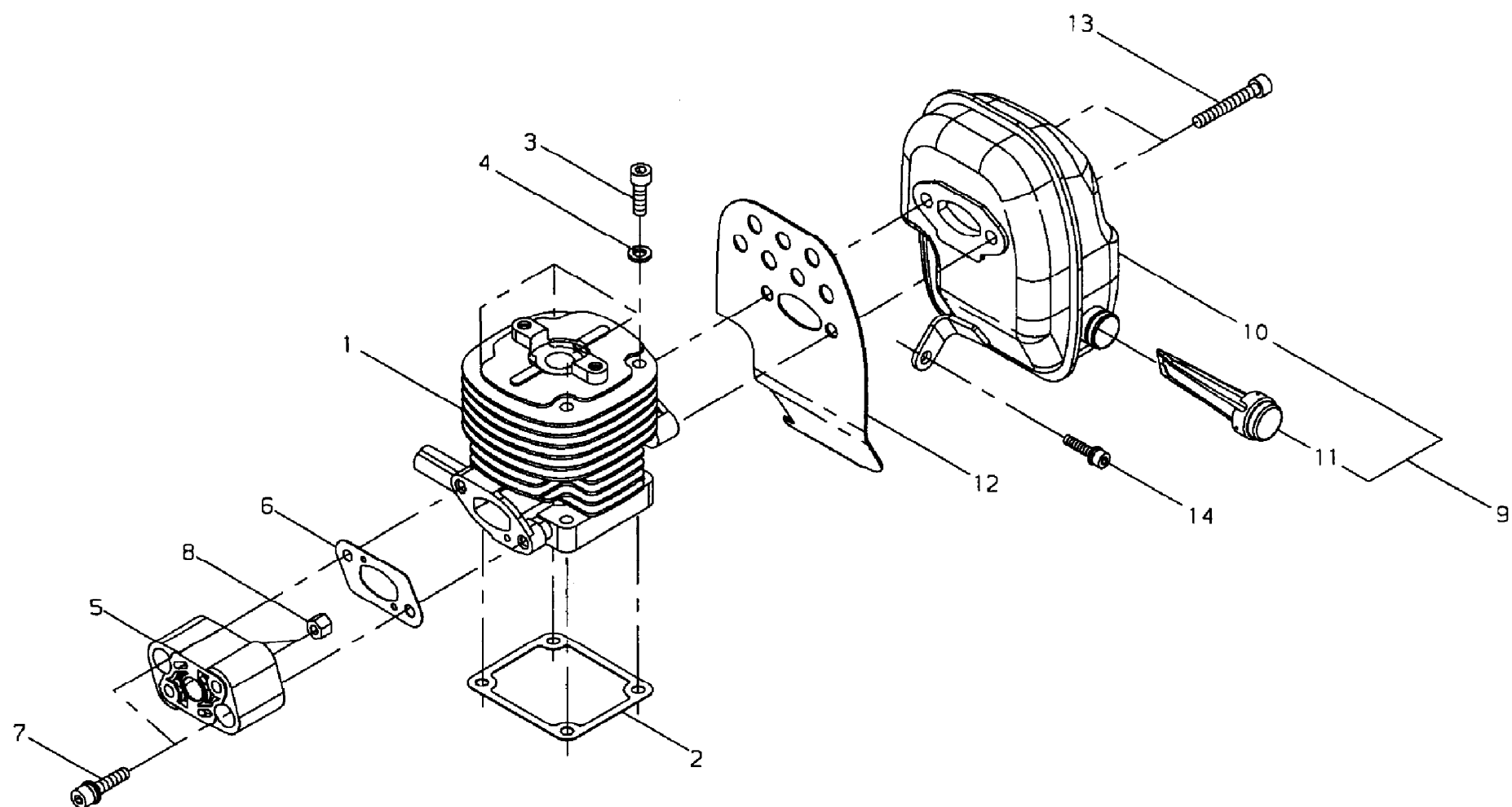
6-2-11,Ozuka-Nishi, Asaminami-ku, Hiroshima, 731-3167, Japan

Telephone (082) 849-2005 Fax (082) 849-2481

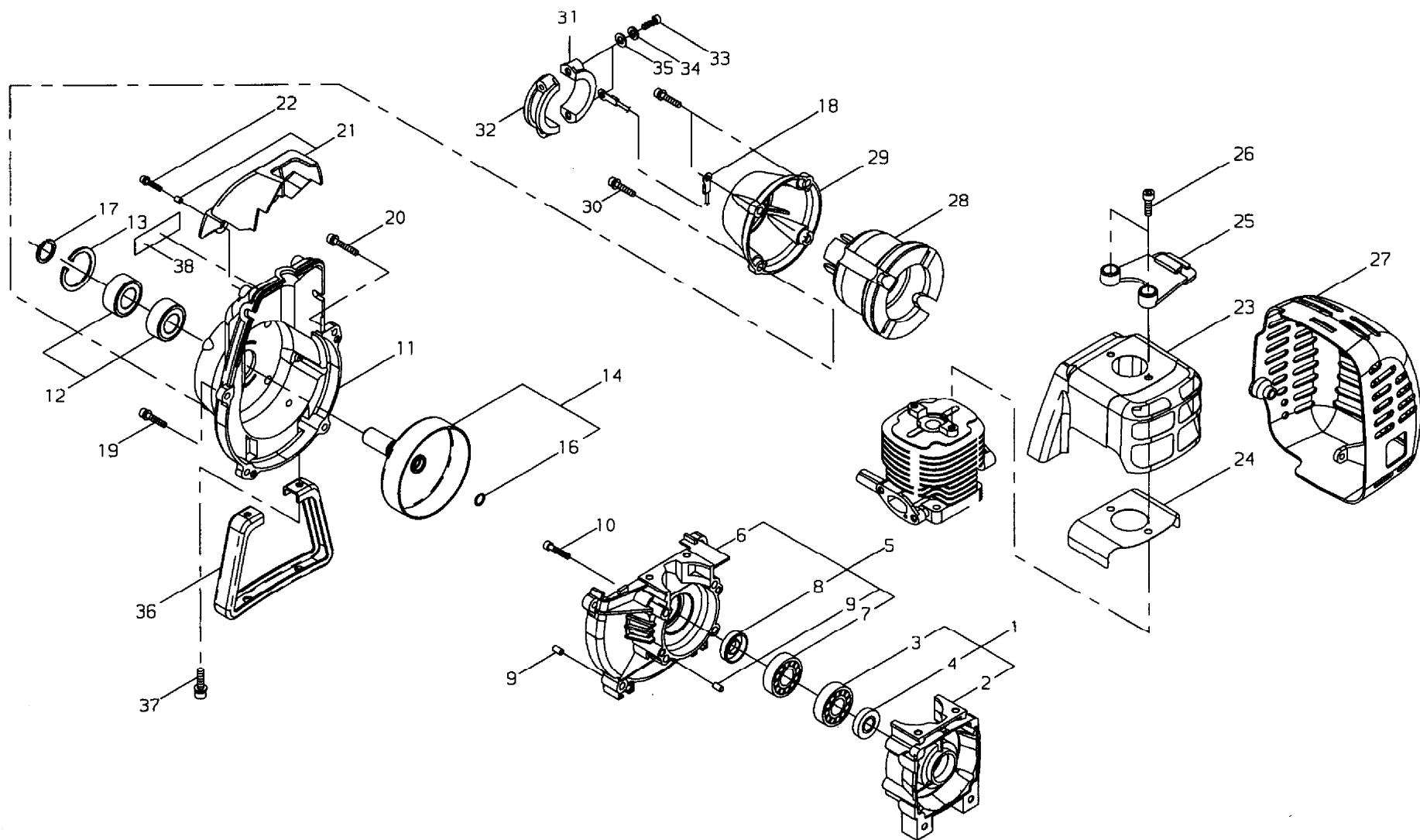
**C 3 5 0 / E C 1**

**J U N . 2 0 、 2 0 0 5**

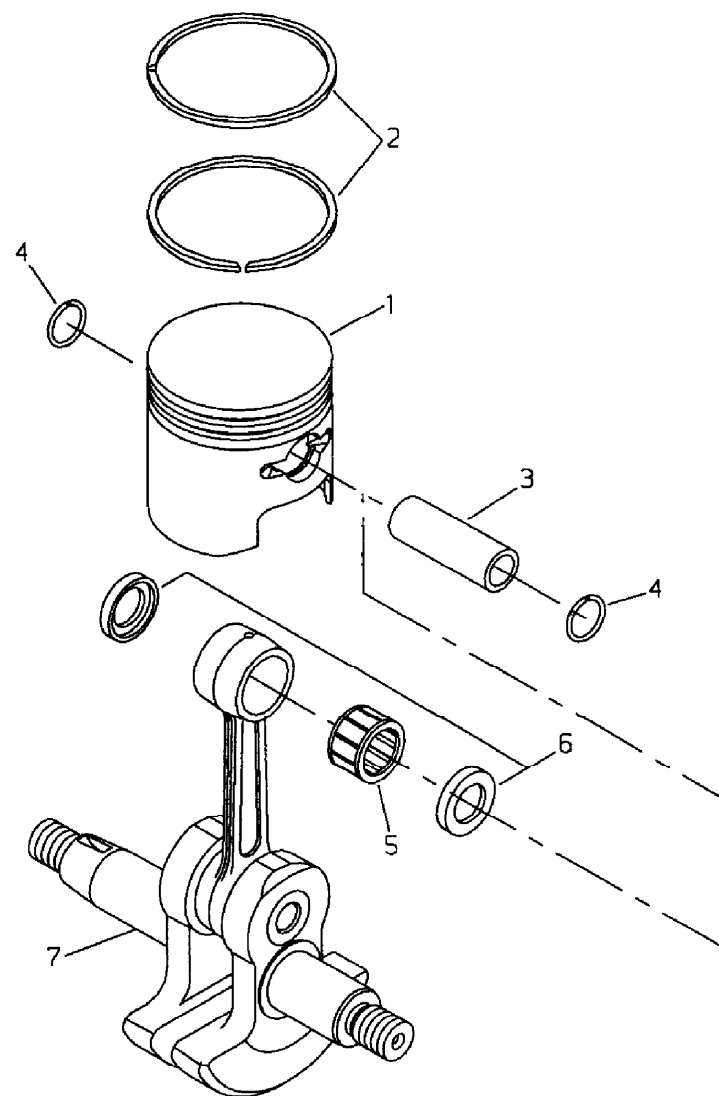
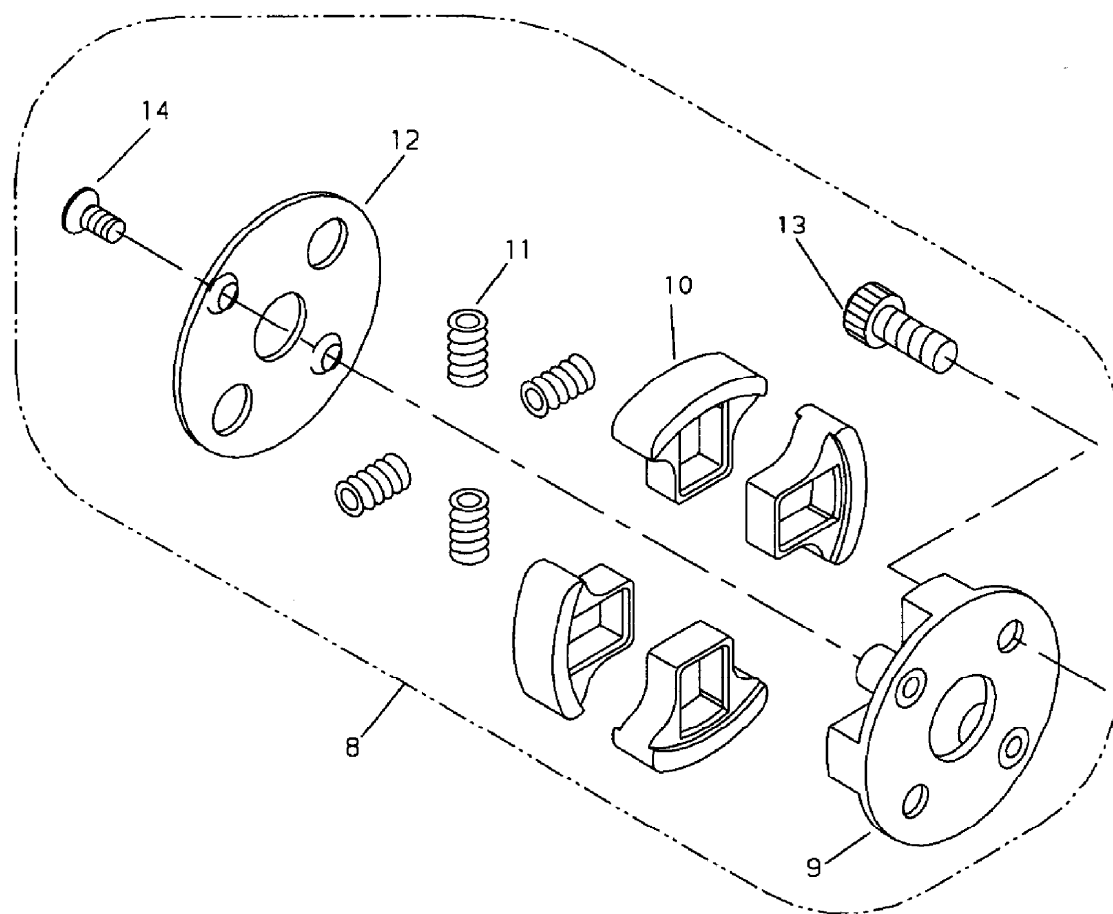
**P r i n t e d i n J a p a n**



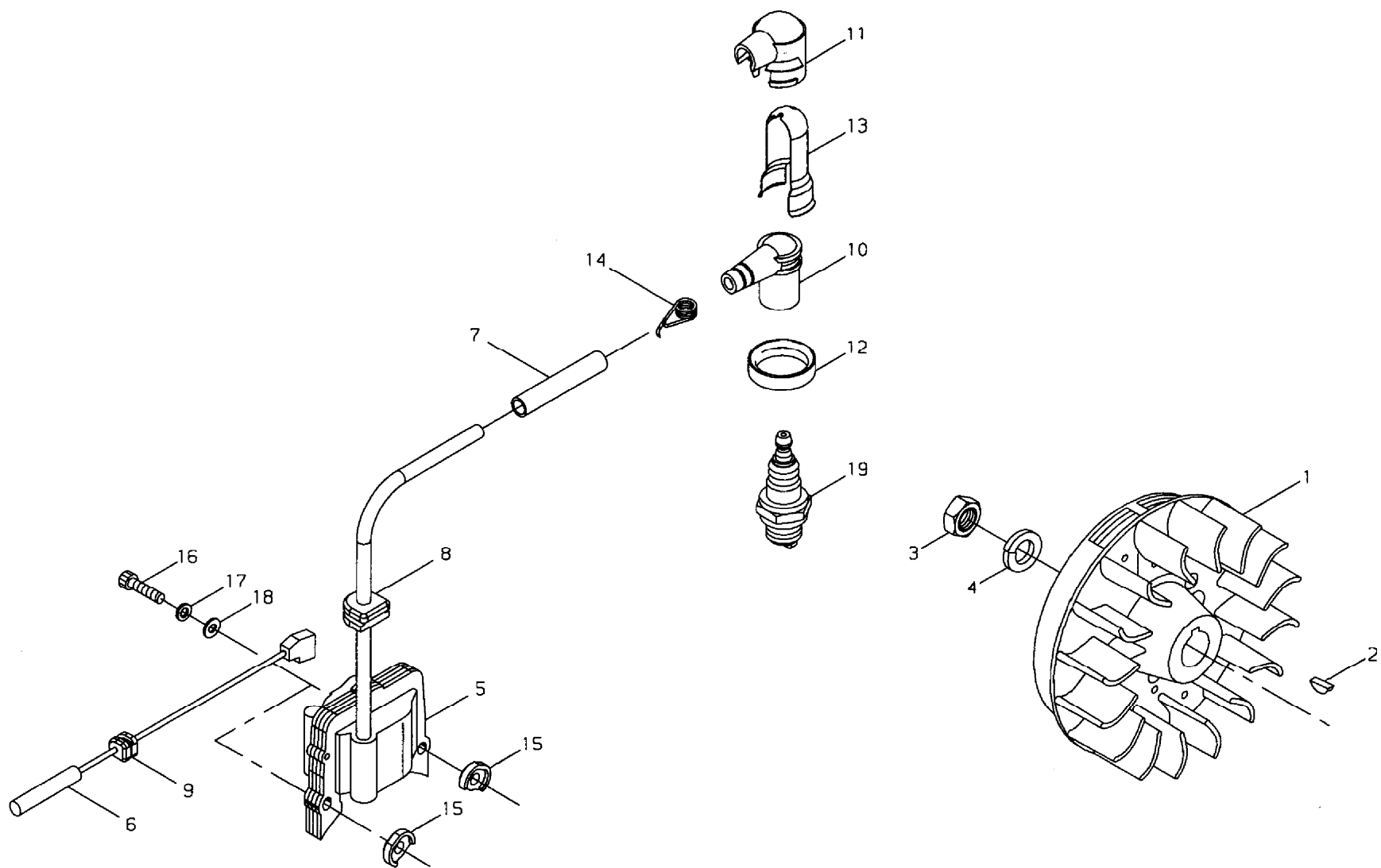




Ref. No	Part No.	Part Name	Q'ty	Remarks、Serial No.
2- 1	72935-21101	CRANK CASE S COMP	1	
2	72935-21111	• CRANK CASE S	1	
3	12900-62020	• BEARING	1	
4	20010-21211	• OIL SEAL	1	
5	70062-21200	CRANK CASE M COMP	1	
6	72921-21121	• CRANK CASE M	1	
7	12900-62020	• BEARING	1	
8	20010-21211	• OIL SEAL	1	
9	12492-50100	• DOWEL PIN	4	
10	01020-05300	BOLT	4	
11	70012-31111	FAN COVER	1	
12	02006-06002	BEARING	2	
13	02432-32120	SNAP RING	1	
14	20011-31200	CLUTCH DRUM SET	1	
16	20011-31220	• SNAP RING	1	
17	20011-31230	SNAP RING	1	
18	70192-31510	EARTH CORD	1	
19	11022-05200	BOLT SPW	3	
20	11022-05300	BOLT SW	1	
21	70131-34100	PROTECTOR COMP	1	
22	11024-04160	BOLT SLPW	2	
23	70196-32110	CYLINDER COVER	1	
24	70196-32141	GASKET	1	
25	62104-32310	STAY	1	
26	11022-05180	BOLT SPW	2	
27	62104-32320	MUFFLER COVER	1	
28	20011-35110	JOINT	1	
29	70012-35130	CAP JOINT	1	
30	11022-05200	BOLT SPW	4	
31	20011-35141	CLAMP A	1	
32	20011-35151	CLAMP B	1	
33	01020-05250	BOLT	2	
34	01600-05131	SPRING WASHER	2	
35	01610-05080	WASHER	2	
36	70200-33112	STAND	1	
37	11022-05160	BOLT SPW	2	
38	70200-31151	LABEL TRADE	1	

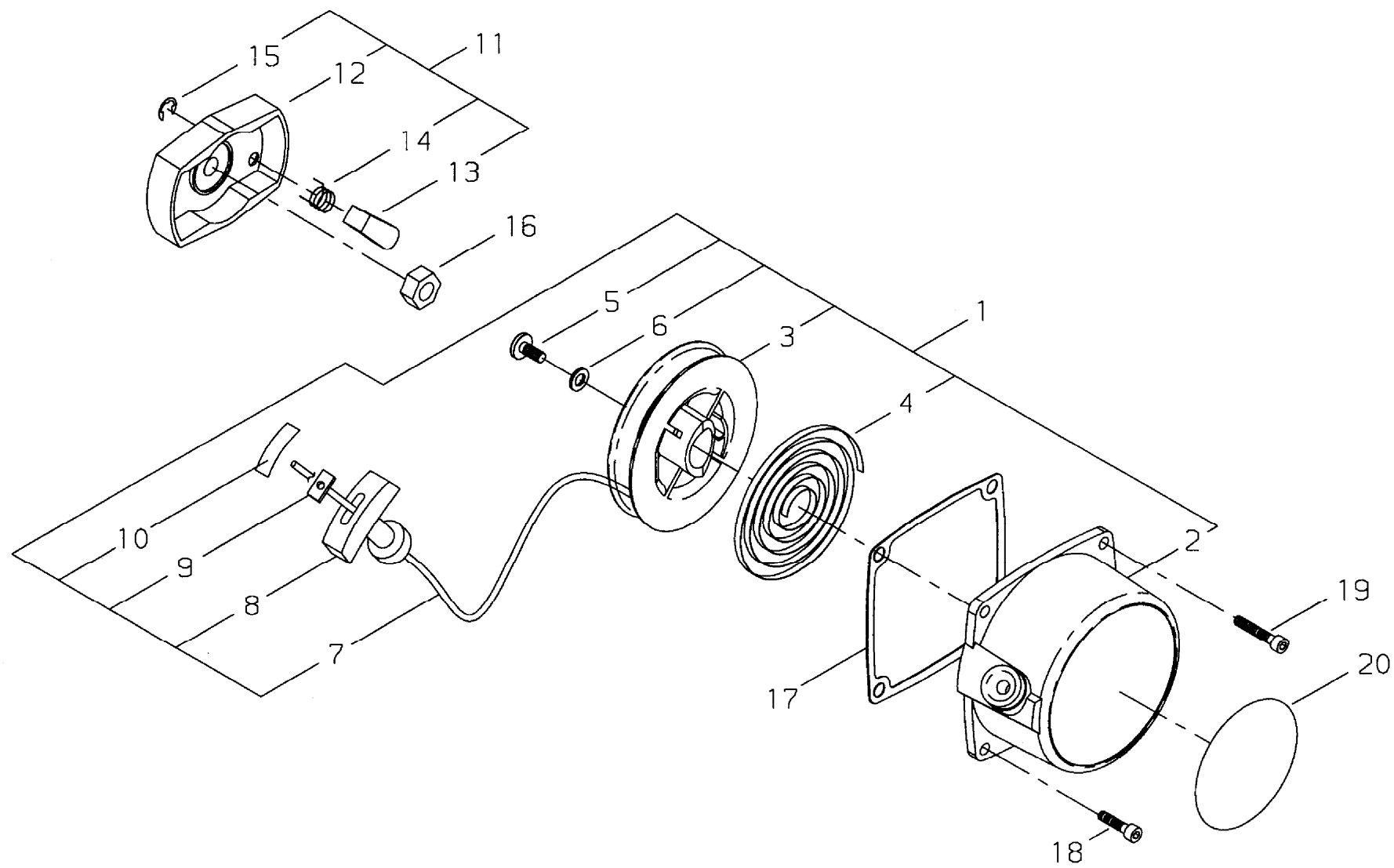




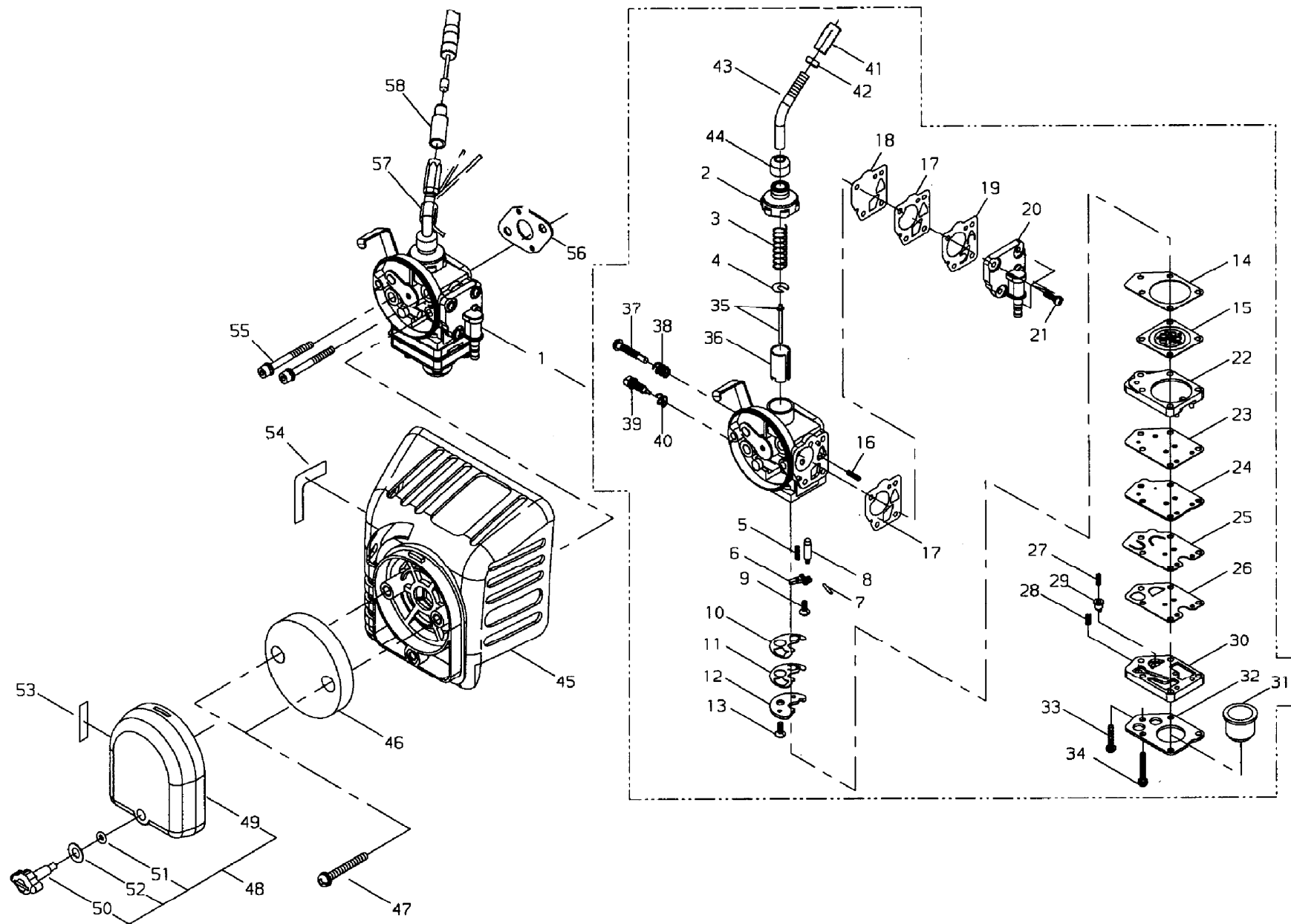












Ref. No	Part No.	Part Name	Q'ty	Remarks、Serial No.
6- 1	62102-81010	CABURETOR ASSY	1	
2	20055-81120	• BODY CAP	1	
3	20003-81140	• THROTTLE SPRING	1	
4	20000-81150	• SPRING RECEIVE	1	
5	20040-81430	• SPRING	1	
6	20011-81451	• LEVER	1	
7	20011-81460	• PIN	1	
8	20000-81441	• NEEDLE VALVE	1	
9	20011-81470	• SCREW	1	
10	20087-81420	• PACKING	1	
11	20087-81411	• CHECK VALVE	1	
12	70200-81430	• PLATE	1	
13	20011-81470	• SCREW	1	
14	20087-81510	• GASKET	1	
15	20087-81520	• DIAPHRAGM	1	
16	20040-81680	• SPRING	2	
17	20011-81630	• GASKET	2	
18	20011-81621	• DIAPHRAGM	1	
19	20087-81660	• PUMP VALVE	1	
20	20087-81640	• PUMP BODY	1	
21	20000-81650	• SCREW	4	
22	20087-81550	• COVER	1	
23	20087-81890	• PACKING	1	
24	20087-81560	• PLATE	1	
25	20087-81571	• CHECK VALVE	1	
26	20087-81540	• GASKET	1	
27	20087-81851	• SPRING	1	
28	20087-81870	• SPRING	1	
29	20087-81861	• VALVE	1	
30	20087-81811	• PUMP BASE	1	
31	20087-81820	• PUMP	1	
32	20087-81830	• PLATE	1	
33	20087-81840	• SCREW	1	
34	20087-81880	• SCREW	4	
35	62102-81320	• JET NEEDLE	1	
36	70131-81180	• THROTTLE VALVE	1	
37	20000-81310	• SLOW STOP SCREW	1	
38	72920-81820	• SPRING	1	



