

# **shindaiwa**

## **PARTS PRICE LIST**

**2 8 5 S**

**Shindaiwa Corporation**

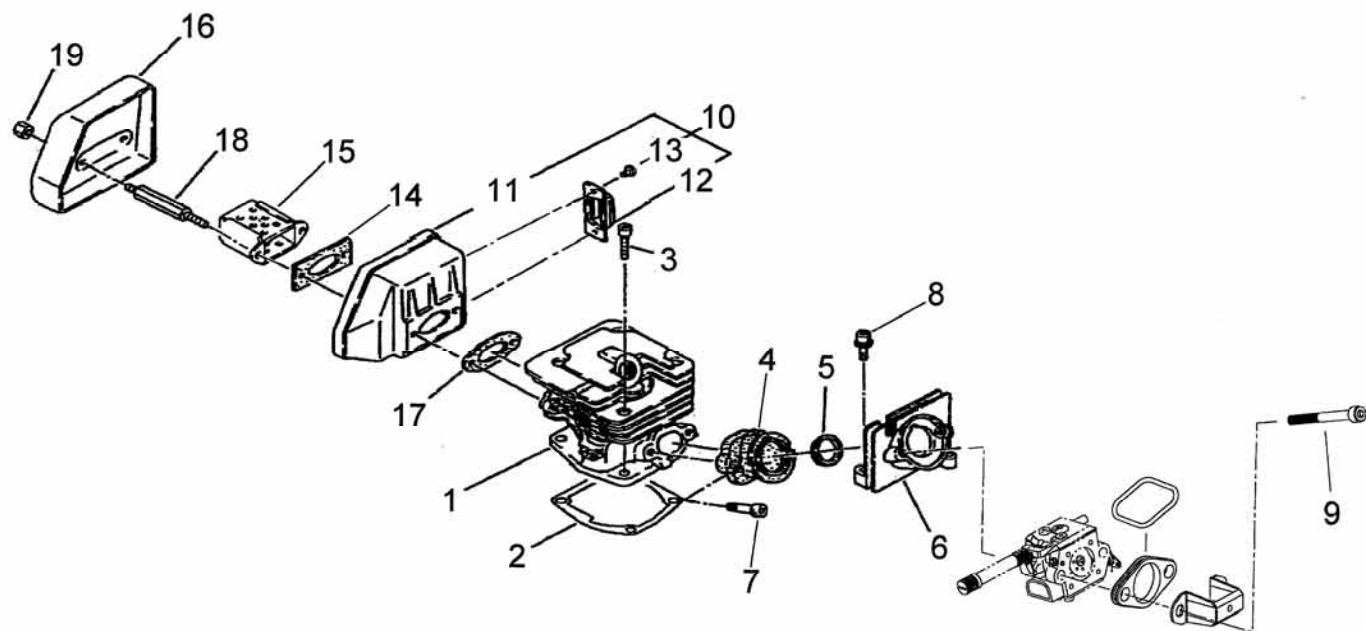
6-2-11,Ozuka-Nishi, Asaminami-ku, Hiroshima, 731-3167, Japan

Telephone (082) 849-2005 Fax (082) 849-2481

**2 8 5 S / E C 1**

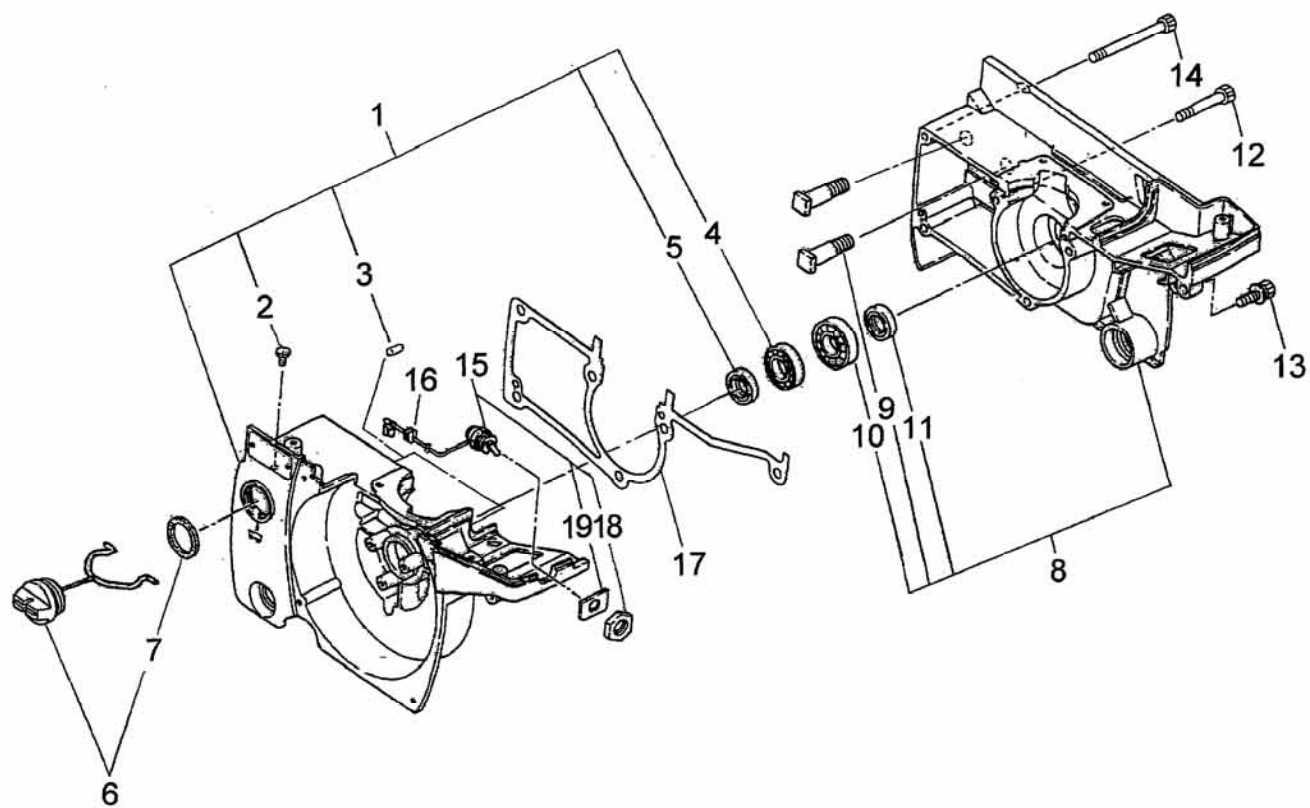
**M A R . 2 , 2 0 0 9**

**P r i n t e d i n J a p a n**

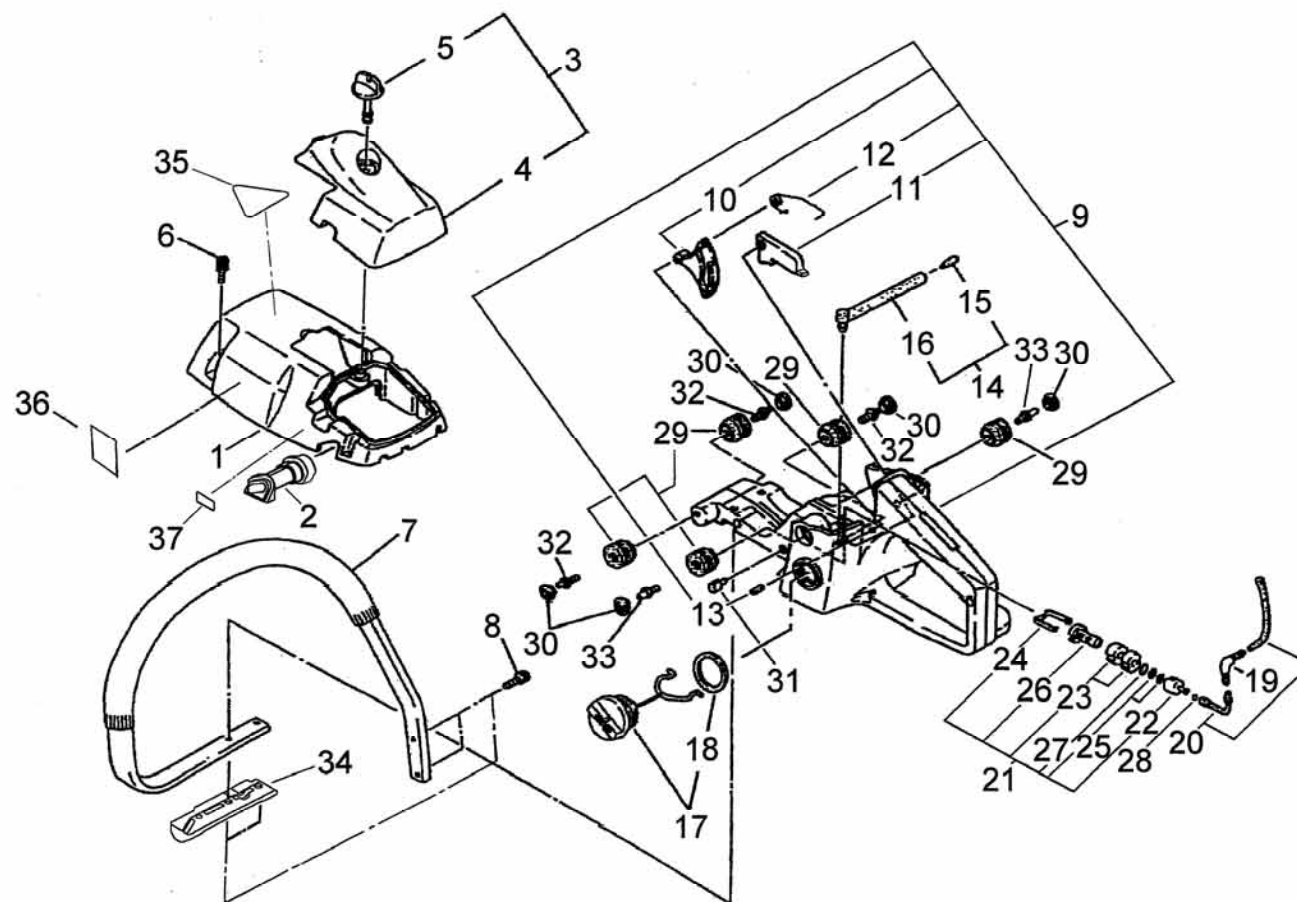


PRICE:(\$)

[illegible]

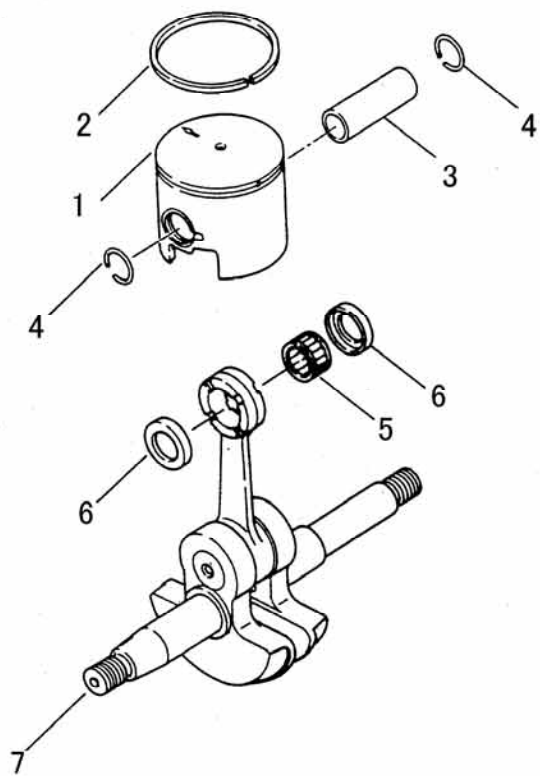


PRICE:(\$)  
[illegible]



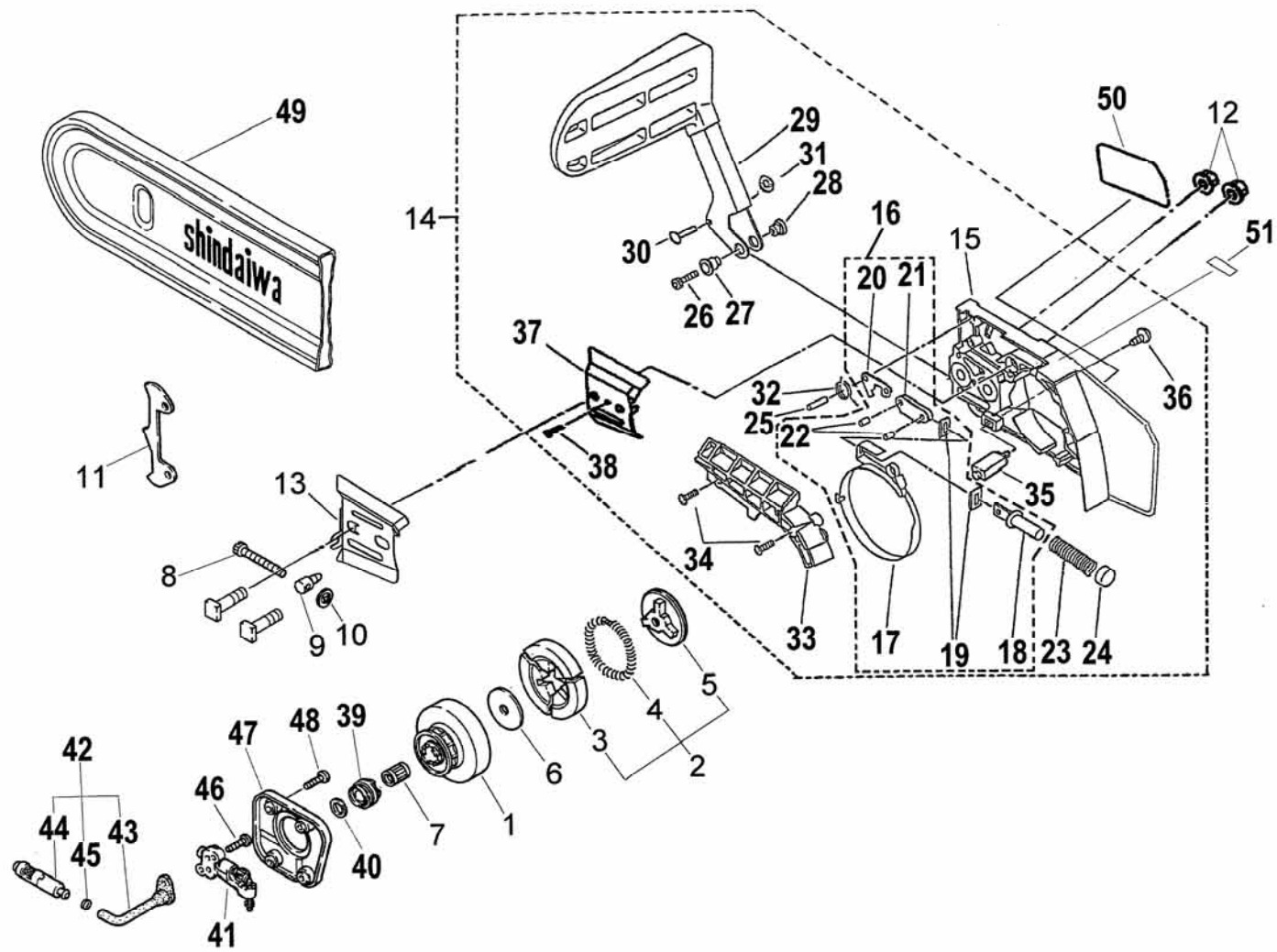
PRICE:(\$)

Ref. No.	Part No .	Part Name	Q`ty	Unit Price(\$)	Remarks
3-1	39006-31020	CYLINDER COVER	1		
2	69022-31310	GROMMET	1		
3	39006-31031	CLEANER COVER SUBASSY	1		
4	39006-31040	*CLEANER COVER	1		
5	22155-82520	*KNOB,CLEANER COVER	1		
6	11060-04160	BOLT,ADHESIVE	3		
7	22156-32111	FRONT HANDLE	1		
8	11044-04180	BOLT,TAPPING	4		
9	69018-32030	REAR HANDLE SUBASSY	1		
10	22154-33320	*THROTTLE LEVER	1		
11	69018-32250	*LOCK LEVER	1		
12	17520-11300	*COIL SPRING	1		
13	12420-40255	*SPRING PIN	2		
14	22154-33900	BREATHER ASSY	1		
15	22155-33950	*ELEMENT	1		
16	22154-33940	*PIPE	1		
17	22197-33802	CAP ASSY	1		
18	22160-21351	*GASKET,CAP	1		
19	22155-33930	JOINT	1		
20	22159-34110	FUEL PIPE	1		
21	22115-85401	FUEL FILTER SUBASSY	1		
22	22128-85410	*WEIGHT,FUEL	1		
23	22128-85421	*FILTER	2		
24	22128-85440	*CLIP,FILTER	1		
25	22118-85460	*SCREEN	2		
26	22128-85470	*SLEEVE	1		
27	22128-85480	*RING	1		
28	20020-85540	CLIP	1		
29	22154-33731	CUSHION,22	5		
30	22154-33740	PLUG,22	5		
31	22154-33750	SUPPORTER	1		
32	22156-33750	BOLT,HLP	3		
33	22154-33761	STOPPER BOLT,22	2		
34	39300-34310	STAND	1		
35	19402-00083	LABEL,CAUTION	1		
36	19404-00035	LABEL,DECIBEL	1		110dB(A)
37	19401-00094	LABEL,INST	1		





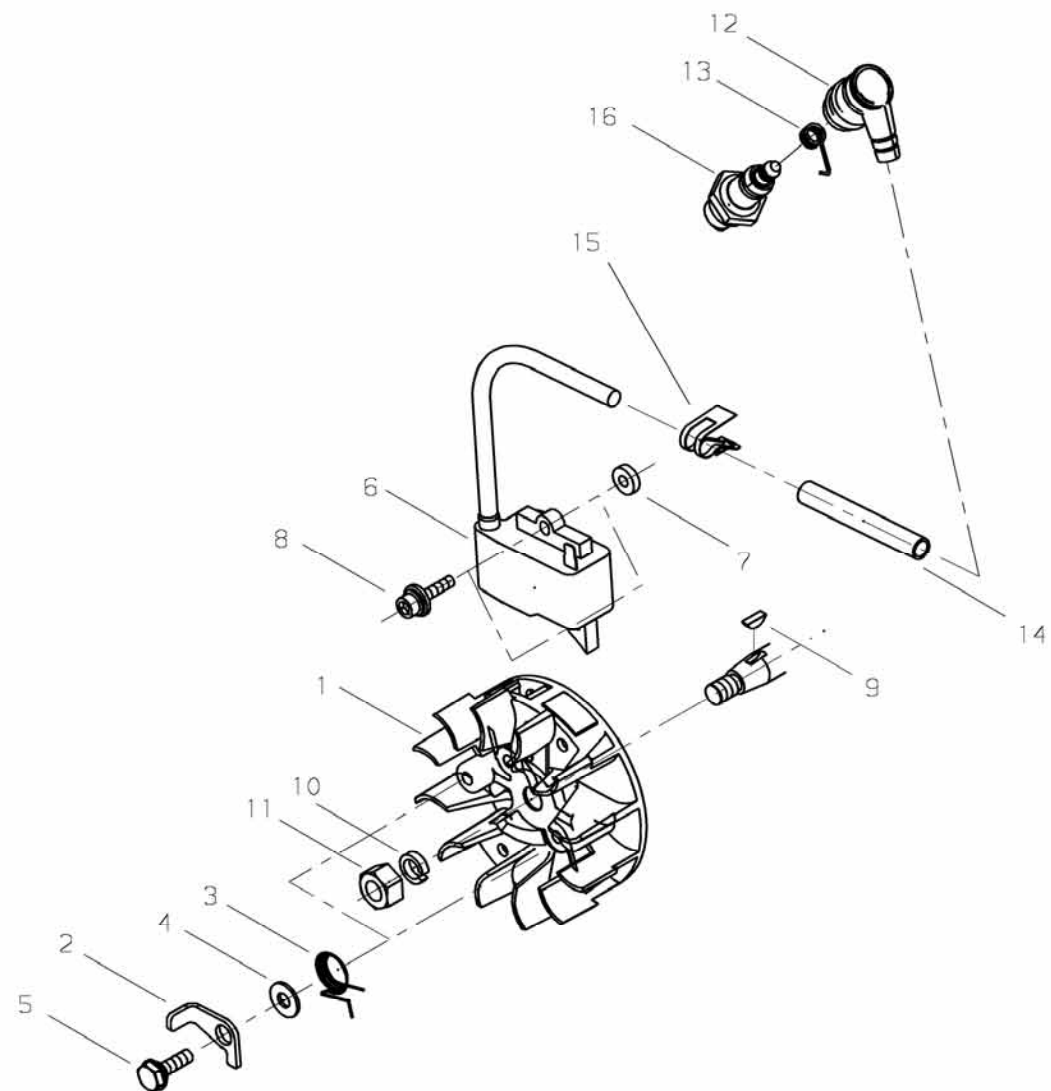
PRICE:(\$)  
[illegible]



PRICE:(\$)

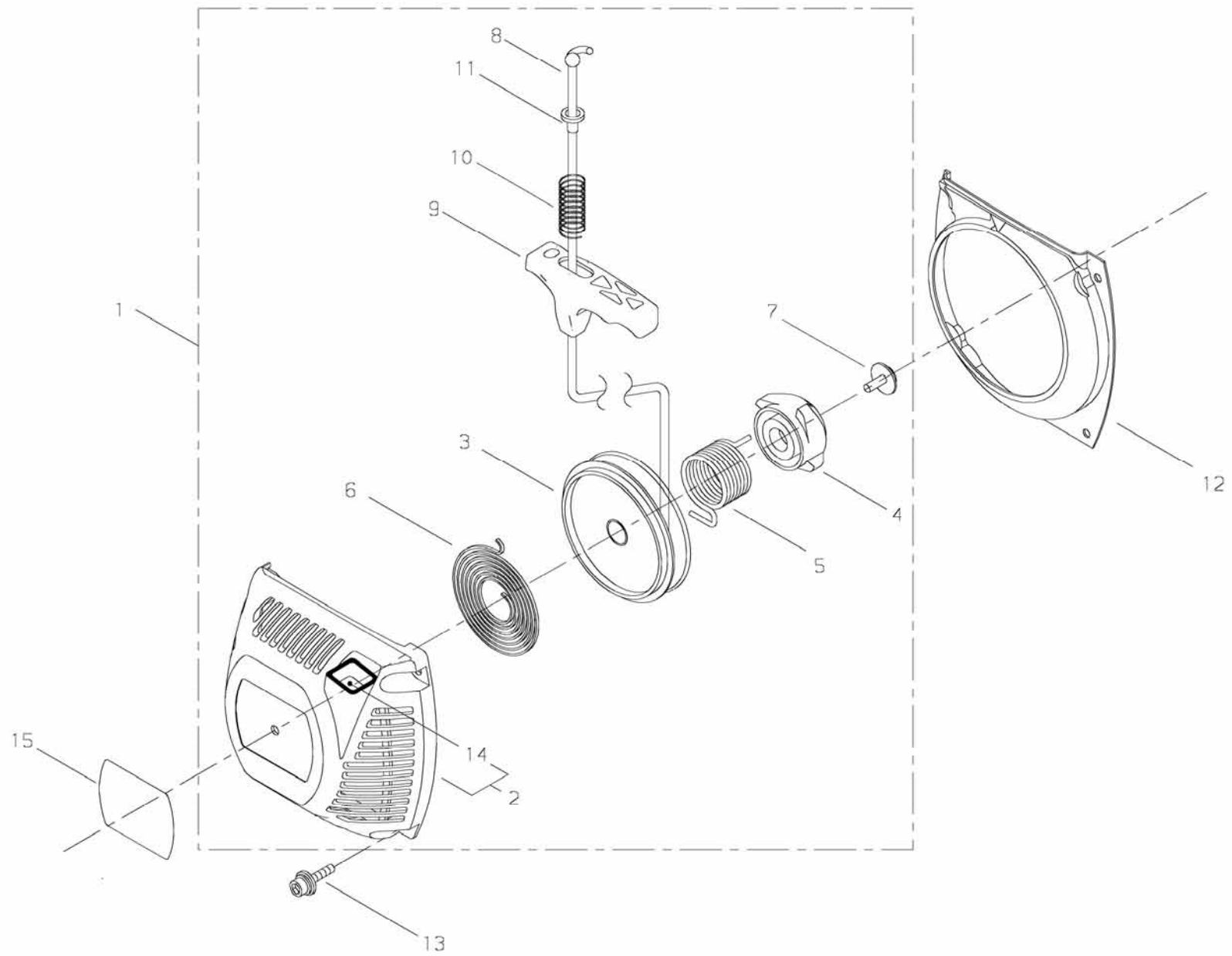
Ref. No.	Part No .	Part Name	Q`ty	Unit Price(\$)	Remarks
5-1	22163-51110	CLUTCH DRUM	1		
2	72348-51200	CLUTCH ASSY	1		
3	72348-51220	*CLUTCH SHOE	3		
4	22102-51230	*CLUTCH SPRING	1		
5	22154-51240	*CLUTCH BOSS,B	1		
6	22154-51250	CLUTCH BOSS,A	1		
7	22102-51310	NEEDLE BEARING	1		
8	22154-52421	SLIDE SCREW	1		
9	22150-52440	SLIDE PIECE	1		
10	22154-52450	PUSH NUT	1		
11	22154-52530	SPIKE	1		
12	22182-52411	NUT	2		
13	39300-52130	GUIDE PLATE	1		
14	69018-53012	CLUTCH COVER ASSY	1		
15	39006-53024	*CLUTCH COVER	1		
16	39020-53320	*BRAKE BAND COMP	1		
17	72345-54210	**BRAKE BAND	1		
18	72316-54220	**HOLDER,SPRING	1		
19	72316-54310	**ADJUST PLATE	2		
20	22173-54561	**INNER LEVER	1		
21	72316-54570	**TIE STRAP	1		
22	12492-40080	**ROLLER	2		
23	72346-54230	*BRAKE SPRING	1		
24	72316-54240	*STOPPER	1		
25	12492-40140	*ROLLER	1		
26	01020-04120	*BOLT	1		
27	69018-53310	*HOLDER	1		
28	39309-53320	*NUT,LEVER	1		
29	72316-54511	*LEVER	1		
30	69018-53320	*PIN,LEVER	1		
31	23115-63160	*NUT	1		
32	72316-54580	*SPRING,LEVER	1		
33	72327-54610	*COVER	1		
34	01270-04122	*SCREW,TAPPING	2		
35	22154-54611	*CHAIN CATCHER	1		
36	01275-03102	*SCREW,TRUSS,T	1		
37	22159-54160	*GUIDE PLATE,B	1		
38	01270-04082	*SCREW,TAPPING	1		

PRICE:(\$)  
[illegible]



PRICE:(\$)

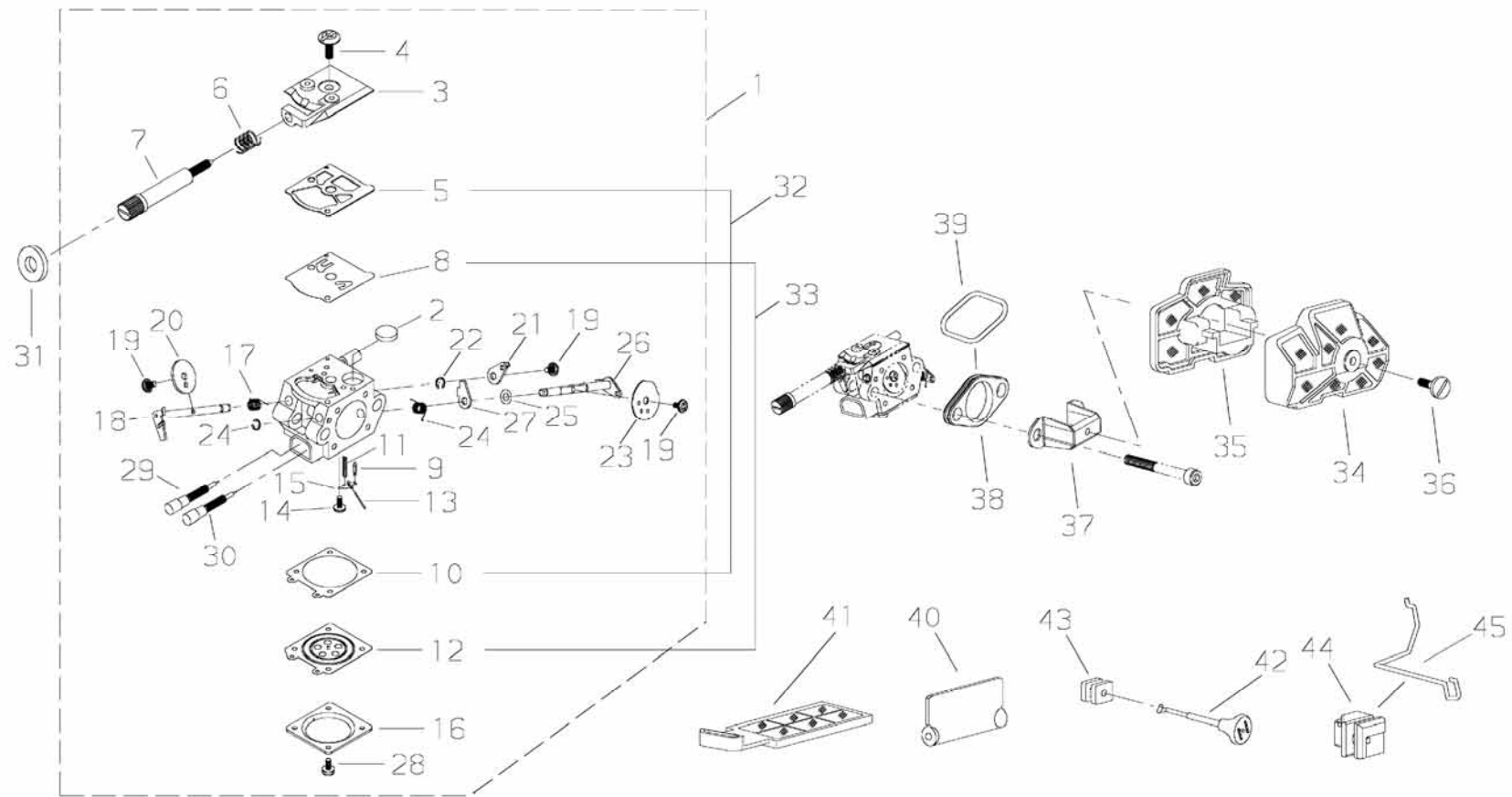
[illegible]



PRICE:(\$)

[illegible]



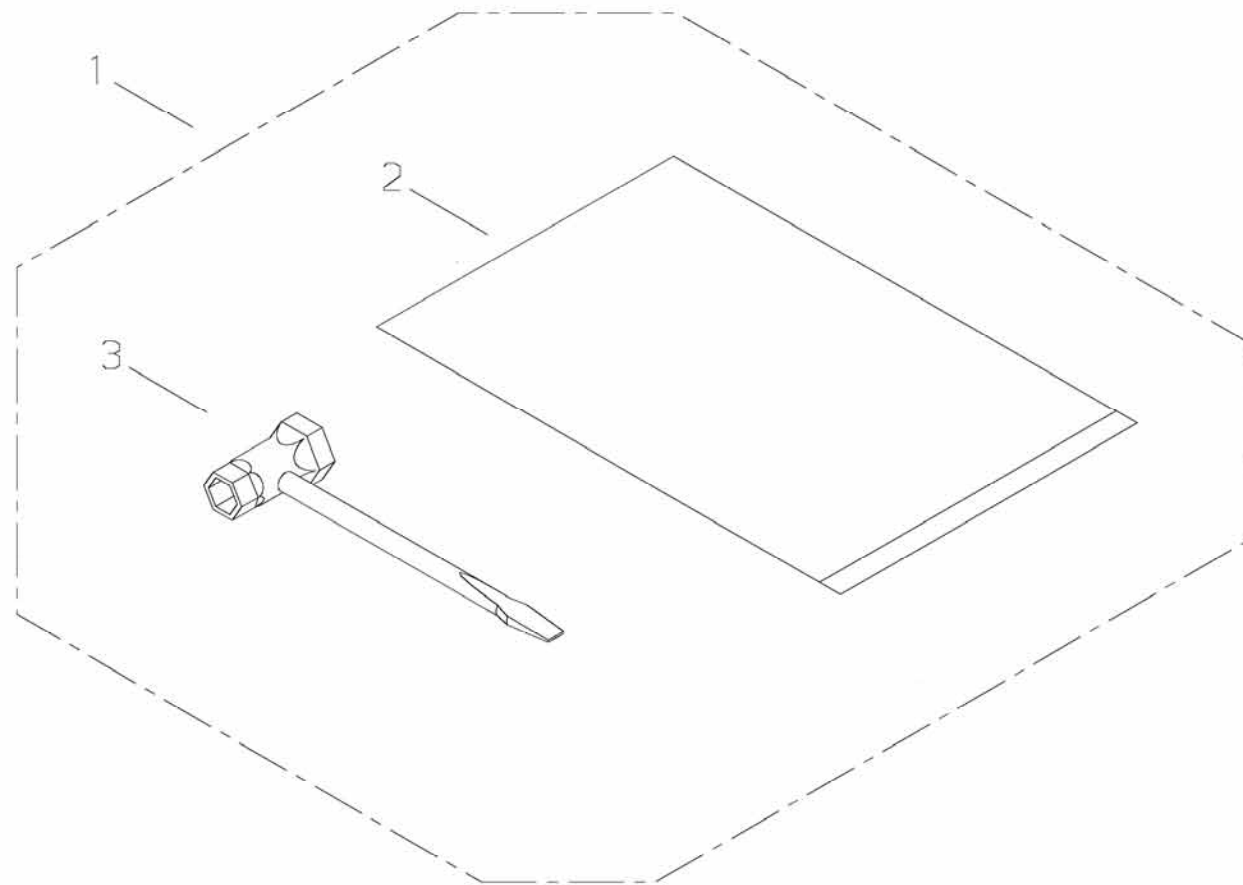


PRICE:(\$)

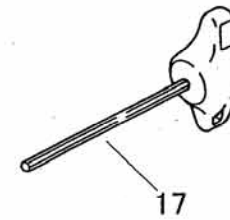
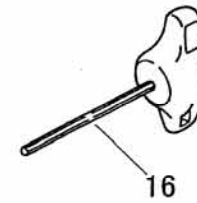
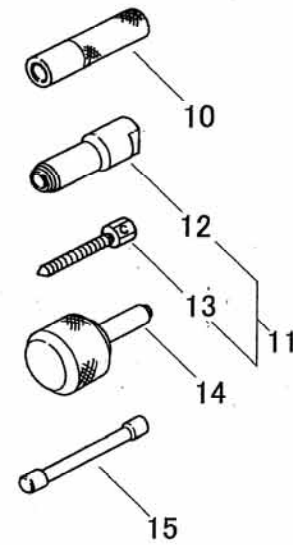
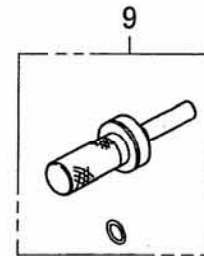
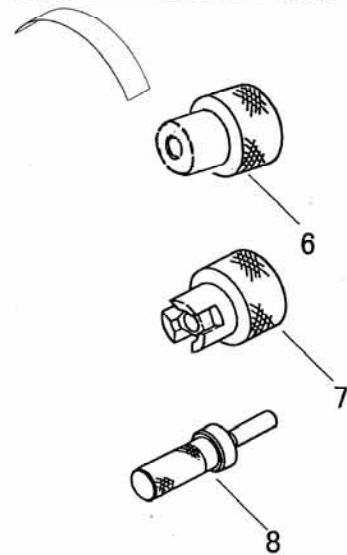
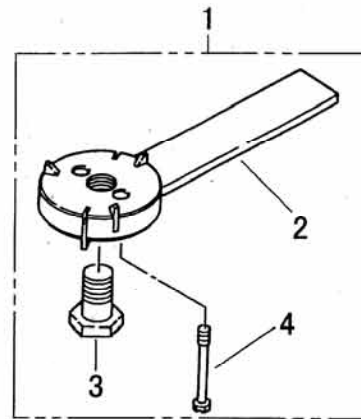
Ref. No.	Part No.	Part Name	Q`ty	Unit Price(\$)	Remarks
8-1	69022-81010	CARBURETOR ASSY	1		
2	70030-81380	*SCREEN	1		
3	22156-81120	*PUMP COVER ASSY	1		
4	22100-81130	*SCREW	1		
5	22128-81140	*GASKET,PUMP	1		
6	22156-81420	*SPRING,IDLE	1		
7	22156-81410	*IDLE SCREW	1		
8	22128-81150	*DIAPHRAGM,PUMP	1		
9	20036-81440	*NEEDLE VALVE	1		
10	39300-81320	*GASKET	1		
11	72342-81270	*SPRING,LEVER	1		
12	22100-81260	*DIAPHRAGM ASSY	1		
13	22100-81250	*PIN	1		
14	22100-81240	*SCREW	1		
15	22100-81230	*LEVER	1		
16	22100-81280	*COVER,DIAPHRAGM	1		
17	22100-81410	*SPRING,SHAFT	1		
18	69018-81310	*SHAFT ASSY	1		
19	20803-81150	*SCREW	3		
20	22164-81340	*THROTTLE VALVE	1		
21	69018-81320	*THROTTLE LEVER	1		
22	70030-81390	*STOPPER	2		
23	39007-81320	*CHOKE VALVE	1		
24	22180-81460	*SPRING	1		
25	20036-81185	*WASHER	1		
26	22180-81740	*SHAFT ASSY	1		
27	22180-81471	*LEVER	1		
28	22100-81351	*SCREW	4		
29	69022-81320	*NEEDLE	1		
30	69022-81330	*NEEDLE	1		
31	22156-81440	SEAL COLLAR	1		
32	39300-98320	GASKET SET	1		
33	22128-81910	DIAPHRAGM KIT	1		
34	69018-82323	AIR CLEANER,UPPER	1		PA6
35	69018-82333	AIR CLEANER,LOWER	1		PA6
36	69018-82361	SCREW	1		
37	69018-82340	BRACKET	1		
38	69018-82350	BRACKET	1		

PRICE:(\$)

[illegible]



PRICE:(\$)  
[illegible]



PRICE:(\$)  
[illegible]