

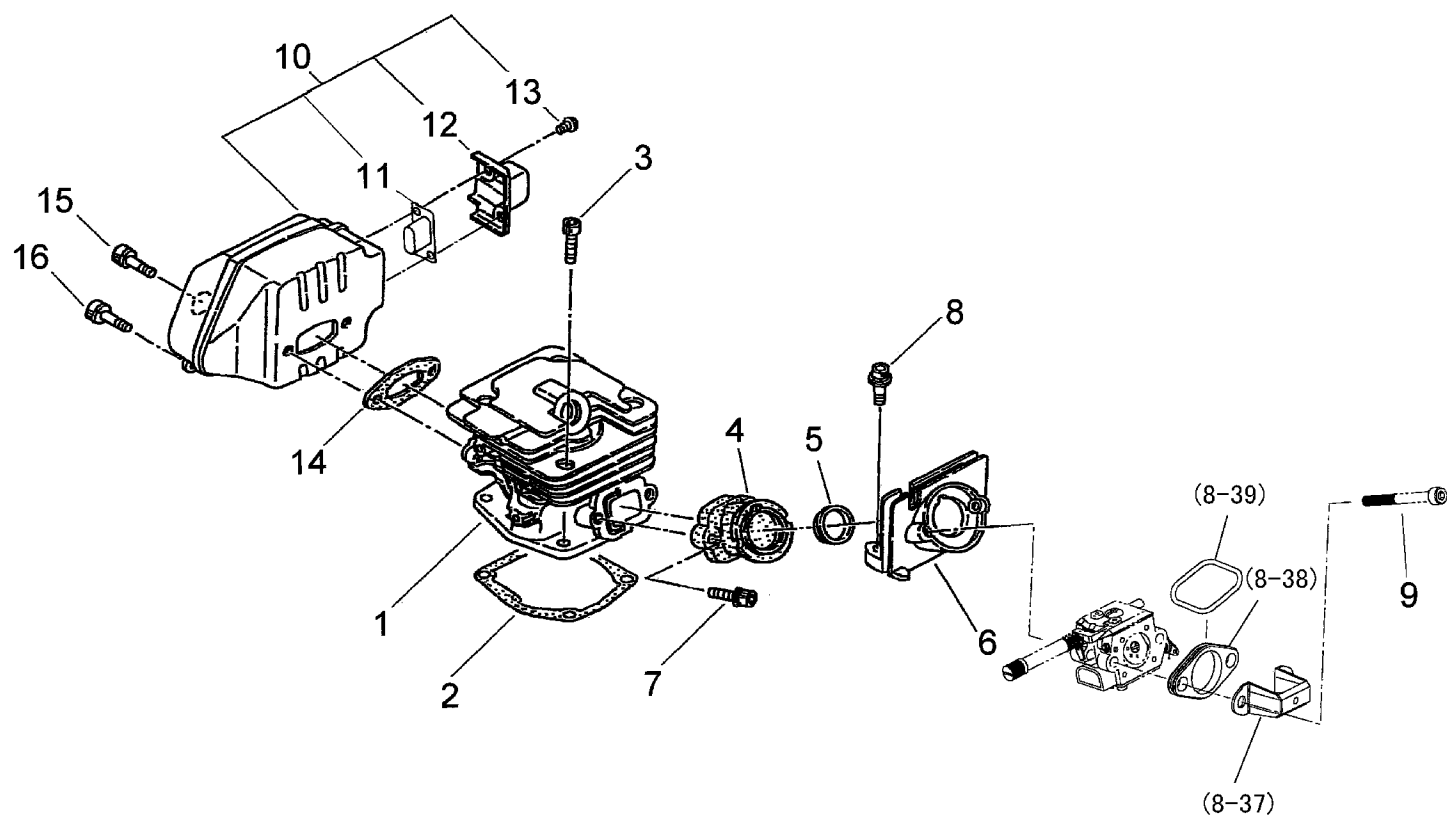
shindaiwa

Illustrated Parts List

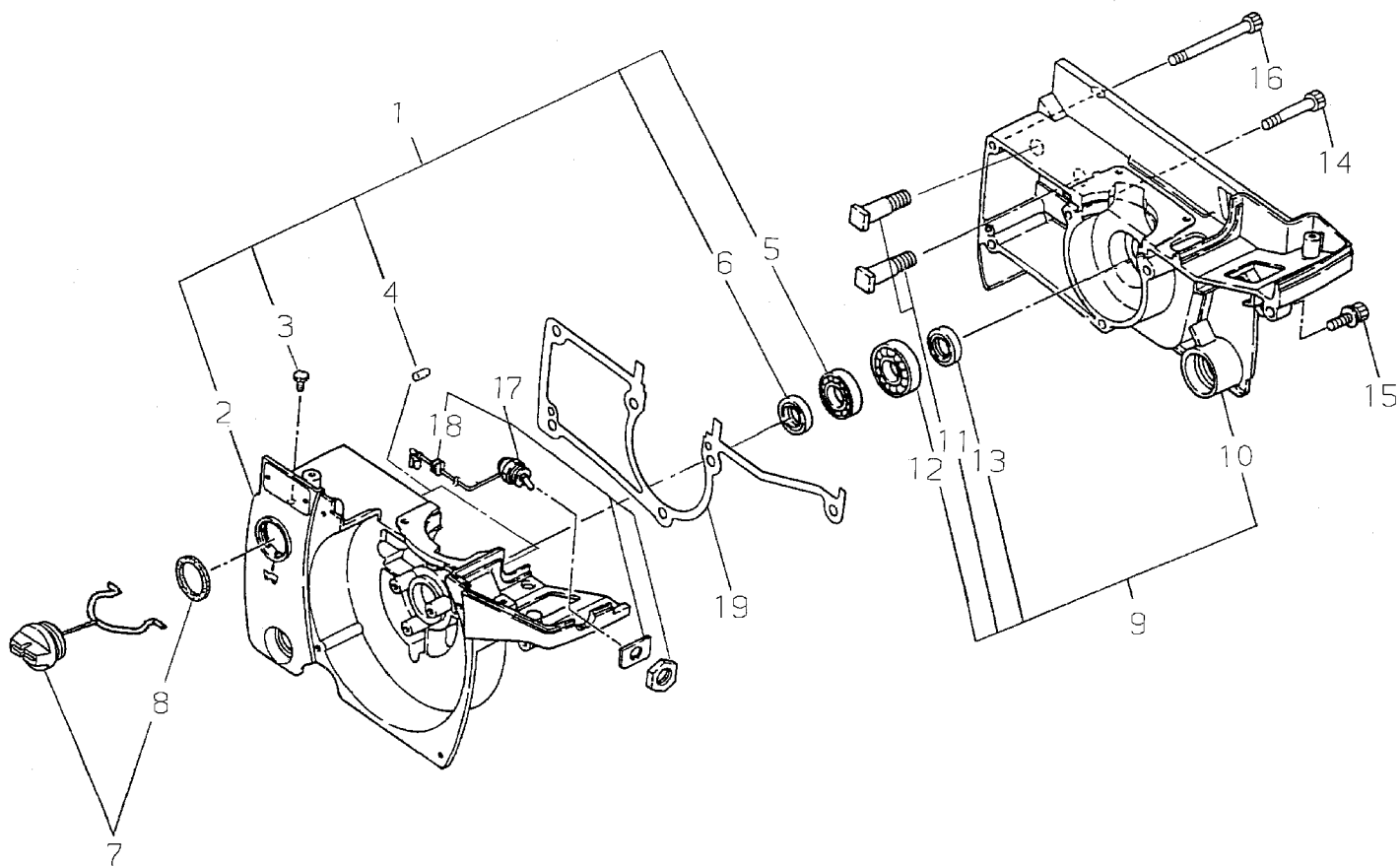
352s/EC1

Shindaiwa, Inc.
11975 S.W. Herman Road
Tualatin, Oregon 97062
Telephone 503 692-3070
Fax 503 692-6696

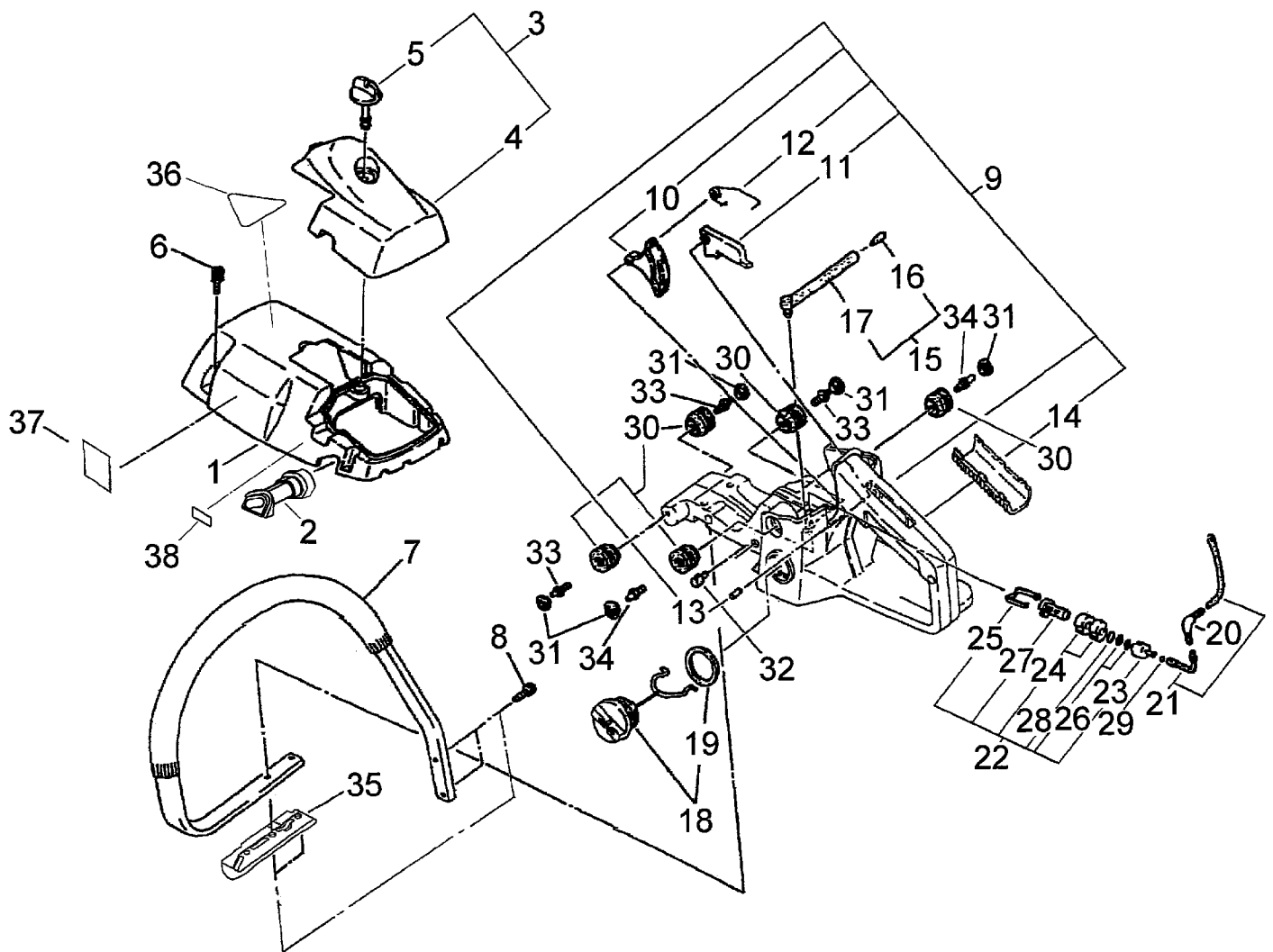
352s/EC1
REV October 19, 2005



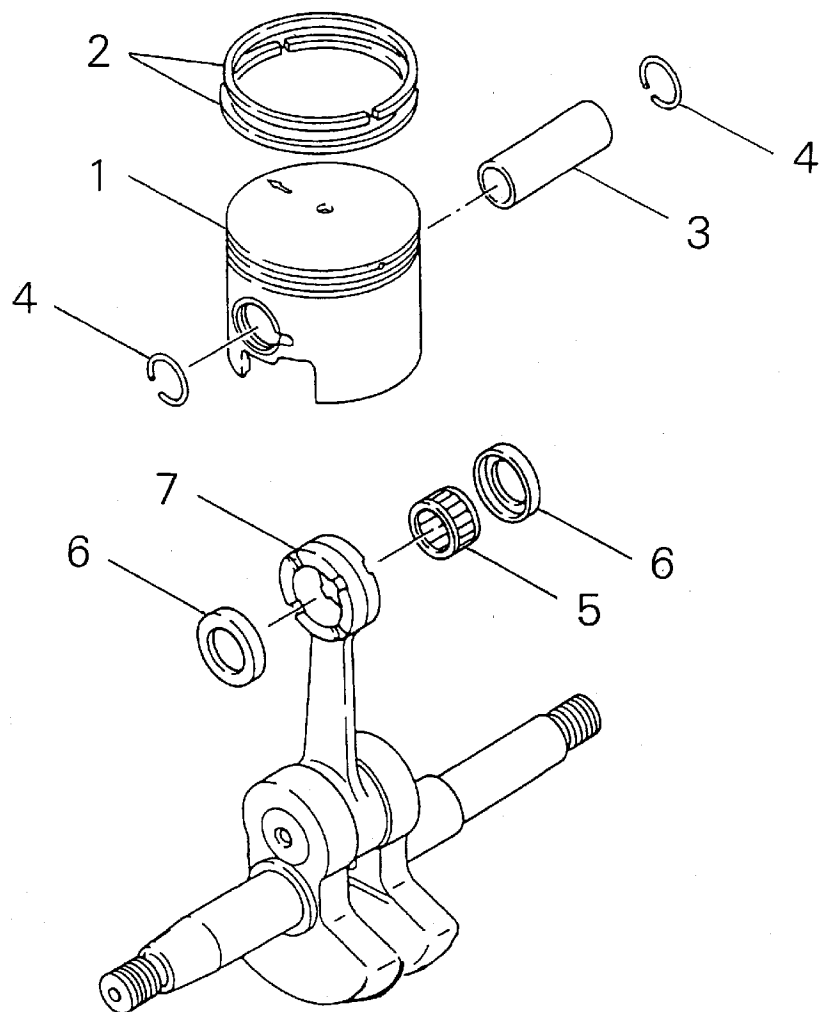
[illegible]



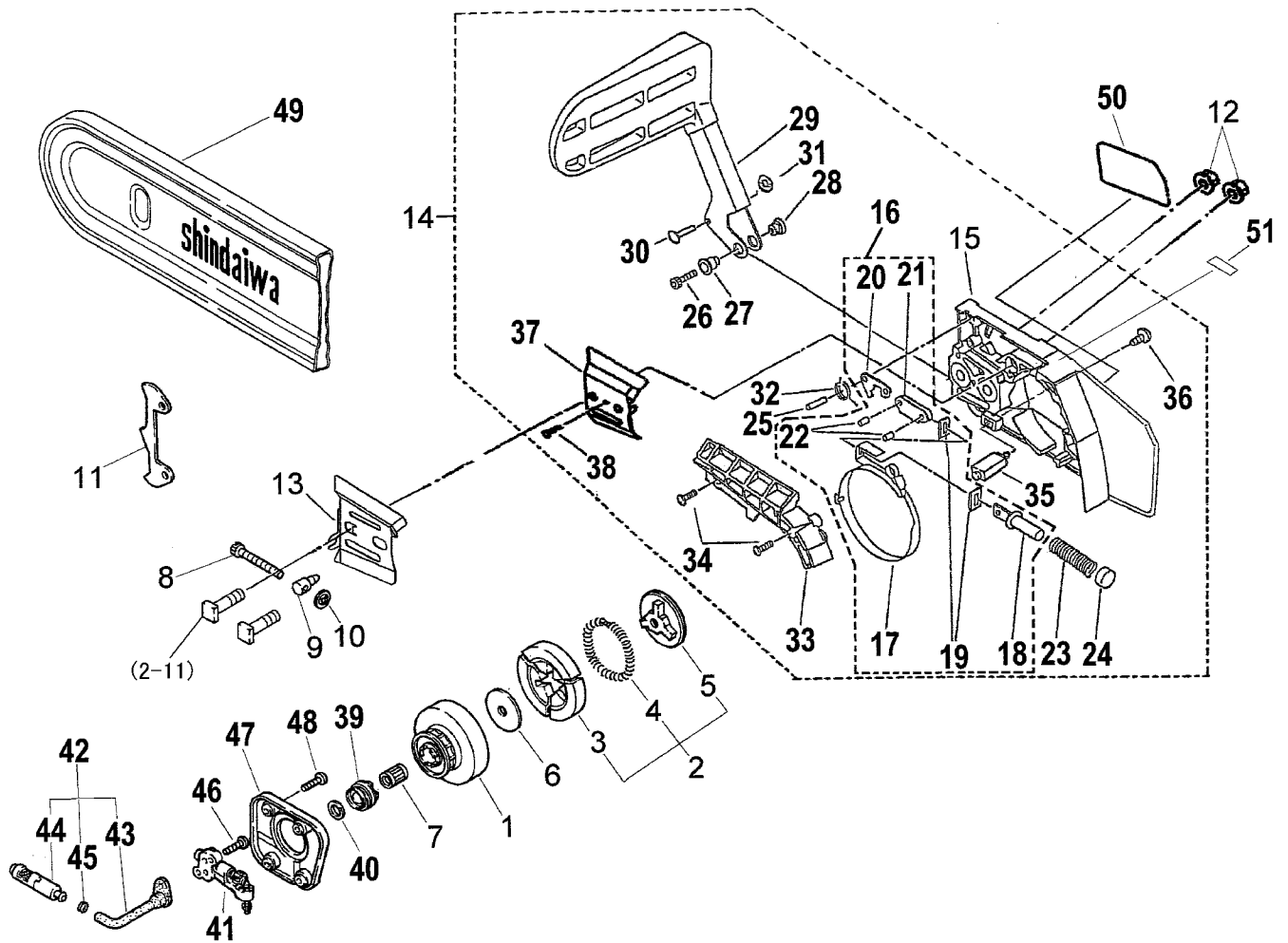
[illegible]



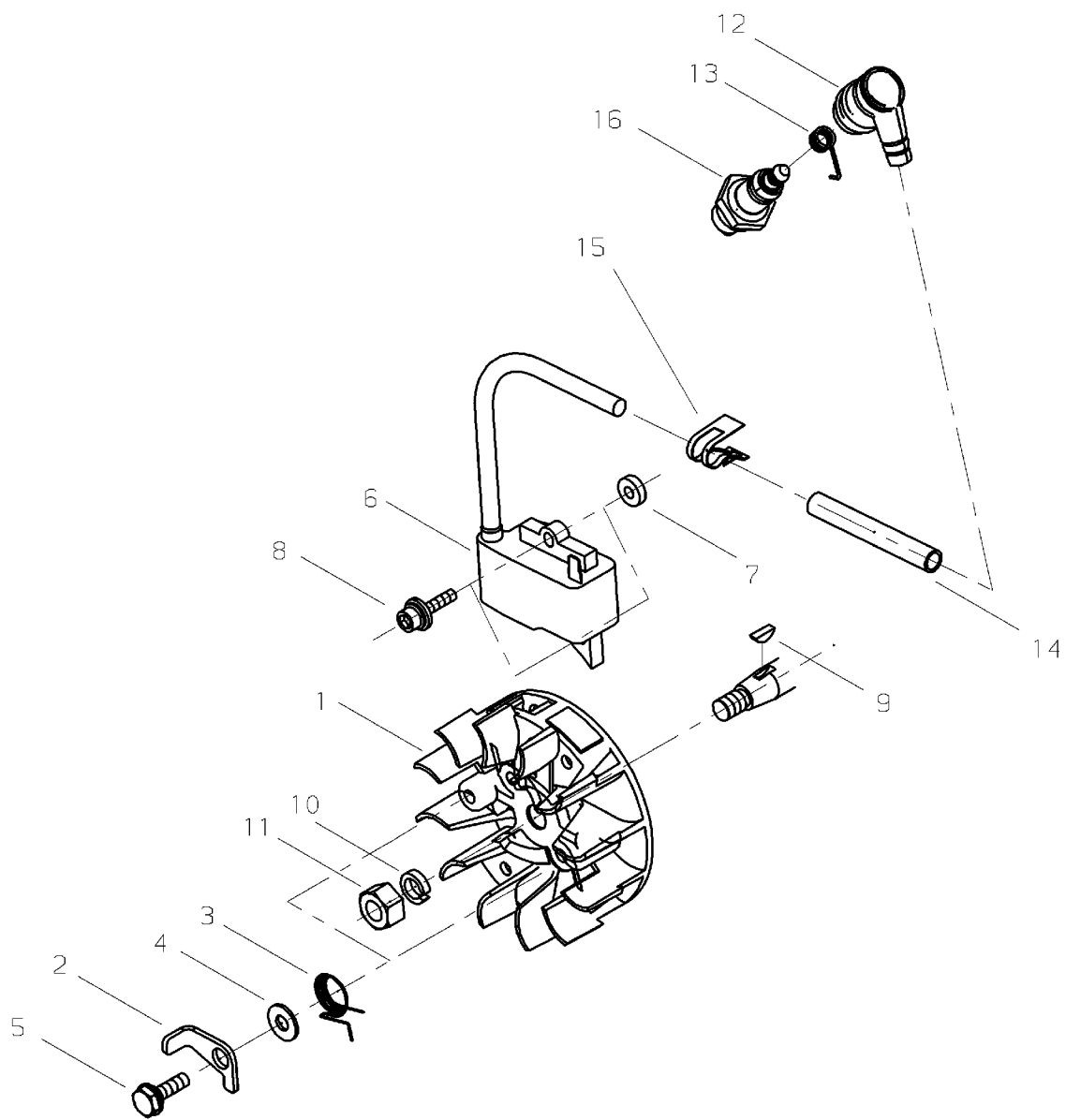
Ref. No	Part No.	Part Name	Q'ty	Remarks,Serial No.
3- 1	39006-31020	CYLINDER COVER	1	
2	69022-31310	GROMMET	1	
3	39006-31031	CLEANER COVER SUB ASSY	1	
4	39006-31040	*CLEANER COVER	1	
5	22155-82520	*KNOB CLEANER COVER	1	
6	11060-04160	BOLT ADHESIVE	3	
7	22156-32111	FRONT HANDLE	1	
8	11044-04180	BOLT TAPPING	2	
9	69019-32030	REAR HANDLE SUB ASSY.	1	
10	22154-33320	*THROTTLE LEVER	1	
11	69018-32250	*LOCK LEVER	1	
12	17520-11300	*COIL SPRING	1	
13	12420-40255	*SPRING PIN	2	
14	22156-33230	*GRIP	1	
15	22154-33900	BREATHER ASSY.	1	
16	22155-33950	*ELEMENT	1	
17	22154-33940	*PIPE	1	
18	22197-33802	CAP ASSY.	1	
19	22160-21351	*GASKET CAP	1	
20	22155-33930	JOINT	1	
21	22159-34110	FUEL PIPE	1	
22	22115-85401	FUEL FILTER SUB ASSY.	1	
23	22128-85410	*FUEL LINE WEIGHT	1	
24	22128-85421	*FILTER	2	
25	22128-85440	*CLIP FILTER	1	
26	22118-85460	*SCREEN	2	
27	22128-85470	*SLEEVE	1	
28	22128-85480	*RING	1	
29	20020-85540	*CLIP	1	
30	22154-33731	CUSHION 22	5	
31	22154-33740	PLUG 22	5	
32	22154-33750	SUPPORTER	1	
33	22156-33750	BOLT HILO	3	
34	22154-33761	STOP BOLT 22	2	
35	39300-34310	STAND	1	
36	19402-00083	LABEL CAUTION	1	
37	19404-00039	LABEL DECIBEL	1	
38	19401-00094	LABEL INST.	1	



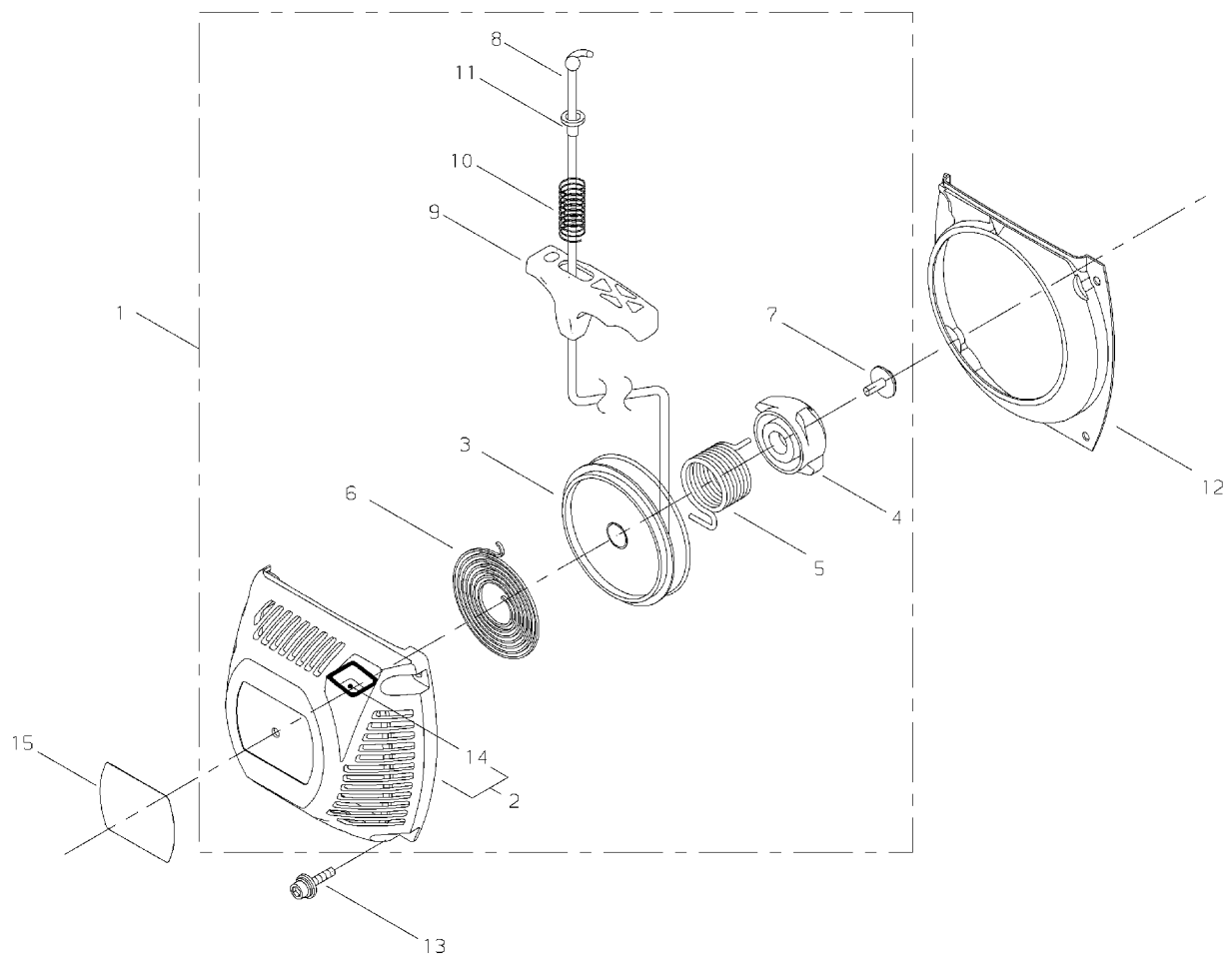
[illegible]



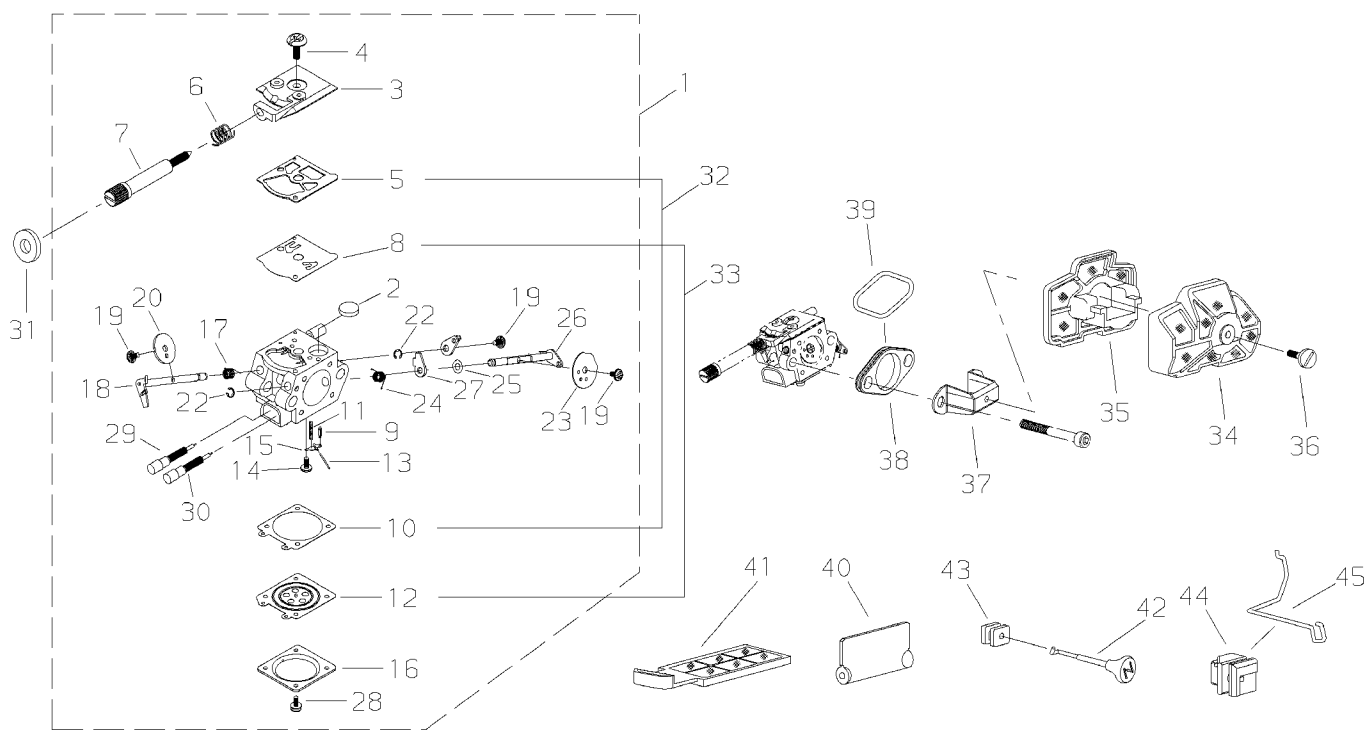
Ref. No	Part No.	Part Name	Q`ty	Remarks,Serial No.
5- 1	22163-51110	CLUTCH DRUM	1	
2	72348-51200	CLUTCH ASSY.	1	
3	72348-51220	*CLUTCH SHOE	3	
4	22102-51230	*CLUTCH SPRING	1	
5	22154-51240	*CLUTCH BOSS B	1	
6	22154-51250	CLUTCH BOSS A	1	
7	22102-51310	NEEDLE BEARING	1	
8	22154-52421	SLIDE SCREW	1	
9	22150-52440	SLIDE PIECE	1	
10	22154-52450	PUSH NUT	1	
11	22154-52530	SPIKE	1	
12	22182-52411	NUT	2	
13	39300-52130	GUIDE PLATE	1	
14	69018-53012	CLUTCH COVER ASSY.	1	
15	39006-53024	*CLUTCH COVER	1	
16	39020-53320	*BRAKE BAND COMP	1	
17	72345-54210	**BRAKE BAND	1	
18	72316-54220	**HOLDER SPRING	1	
19	72316-54310	**ADJUST PLATE	2	
20	22173-54561	**INNER LEVER	1	
21	72316-54570	**TIE STRAP	1	
22	12492-40080	**ROLLER	2	
23	72346-54230	*BRAKE SPRING	1	
24	72316-54240	*STOPPER	1	
25	12492-40140	*ROLLER	1	
26	01020-04120	*BOLT	1	
27	69018-53310	*HOLDER	1	
28	39309-53320	*NUT LEVER	1	
29	72316-54511	*LEVER	1	
30	69018-53320	*PIN LEVER	1	
31	23115-63160	*NUT	1	
32	72316-54580	*SPRING LEVER	1	
33	72327-54610	*COVER	1	
34	01270-04122	*SCREW TAPPING	2	
35	22154-54611	*CHAIN CATCHER	1	
36	01275-03102	*SCREW TRUSS T	1	
37	22159-54160	*GUIDE PLATE B	1	
38	01270-04082	*SCREW TAPPING	1	
39	22154-55110	GEAR	1	
40	22154-55120	THRUST PLATE	1	
41	22154-55200	OIL PUMP ASSY.	1	
42	22154-55301	OIL PIPE ASSY.	1	
43	22154-55310	*OIL PIPE	1	
44	22154-55330	*OIL FILTER	1	
45	22154-85540	*CLIP OIL	1	
46	11205-04120	SCREW ADHESIVE	2	
47	22154-56110	PUMP COVER	1	
48	11205-04120	SCREW ADHESIVE	4	
49	19600-44100	CHAIN COVER	1	
50	69022-91320	LABEL TRADE	1	
51	19401-00093	LABEL INST	1	



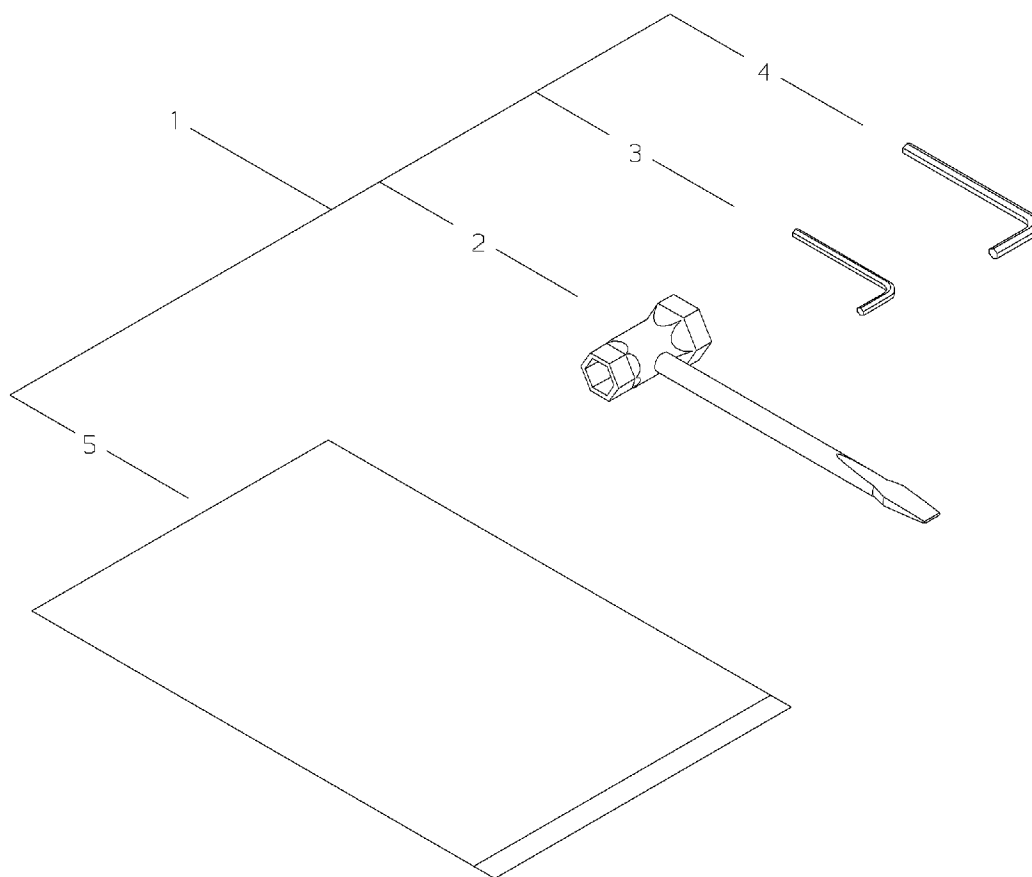
[illegible]



[illegible]



Ref. No	Part No.	Part Name	Q'ty	Remarks,Serial No.
8- 1	69022-81010	CARBURETOR ASSY.	1	
2	70030-81380	*SCREEN	1	
3	22156-81120	*PUMP COVER ASSY.	1	
4	22100-81130	*SCREW	1	
5	22128-81140	*GASKET PUMP COVER	1	
6	22156-81420	*SPRING IDLE	1	
7	22156-81410	*IDLE SCREW	1	
8	22128-81150	*DIAPHRAGM PUMP	1	
9	20036-81440	*NEEDLE VALVE	1	
10	39300-81320	*GASKET	1	
11	72342-81270	*SPRING LEVER	1	
12	22100-81260	*DIAPHRAGM ASSY.	1	
13	22100-81250	*PIN	1	
14	22100-81240	*SCREW	1	
15	22100-81230	*LEVER	1	
16	22100-81280	*COVER DIAPHRAGM	1	
17	22100-81410	*SPRING SHAFT	1	
18	69018-81310	*SHAFT ASSY.	1	
19	20803-81150	*SCREW	3	
20	22164-81340	*THROTTLE VALVE	1	
22	70030-81390	*E RING	2	
23	39007-81320	*CHOKE VALVE	1	
24	22180-81460	*SPRING CHOKE	1	
25	20036-81185	*WASHER	1	
26	22180-81740	*SHAFT ASSY.	1	
27	22180-81471	*LEVER	1	
28	22100-81351	*SCREW	4	
29	69022-81320	*NEEDLE	1	
30	69022-81330	*NEEDLE	1	
31	22156-81440	SEAL COLLAR	1	
32	39300-98320	GASKET SET	1	
5	22128-81140	*GASKET PUMP COVER	1	
10	39300-81320	*GASKET	1	
33	22128-81910	DIAPHRAGM KIT	1	
8	22128-81150	*DIAPHRAGM PUMP	1	
12	22100-81260	*DIAPHRAGM ASSY.	1	
34	69018-82323	AIR CLEANER UPPER	1	
35	69018-82333	AIR CLEANER LOWER	1	
36	69018-82361	SCREW	1	
37	69018-82340	BRACKET	1	
38	69018-82350	BRACKET	1	
39	02304-02242	ORING	1	
40	22154-82320	SHUTTER	1	
41	22154-82310	AIR CLEANER	1	
42	22180-82121	CHOKE ROD	1	
43	22180-82130	GROMMET CHOKE	1	
44	22154-82150	GROMMET ROD	1	
45	69018-83323	THROTTLE ROD	1	



[illegible]