

# **shindaiwa**

## **PARTS PRICE LIST**

<b>4 9 0</b>
--------------

**Shindaiwa Corporation**

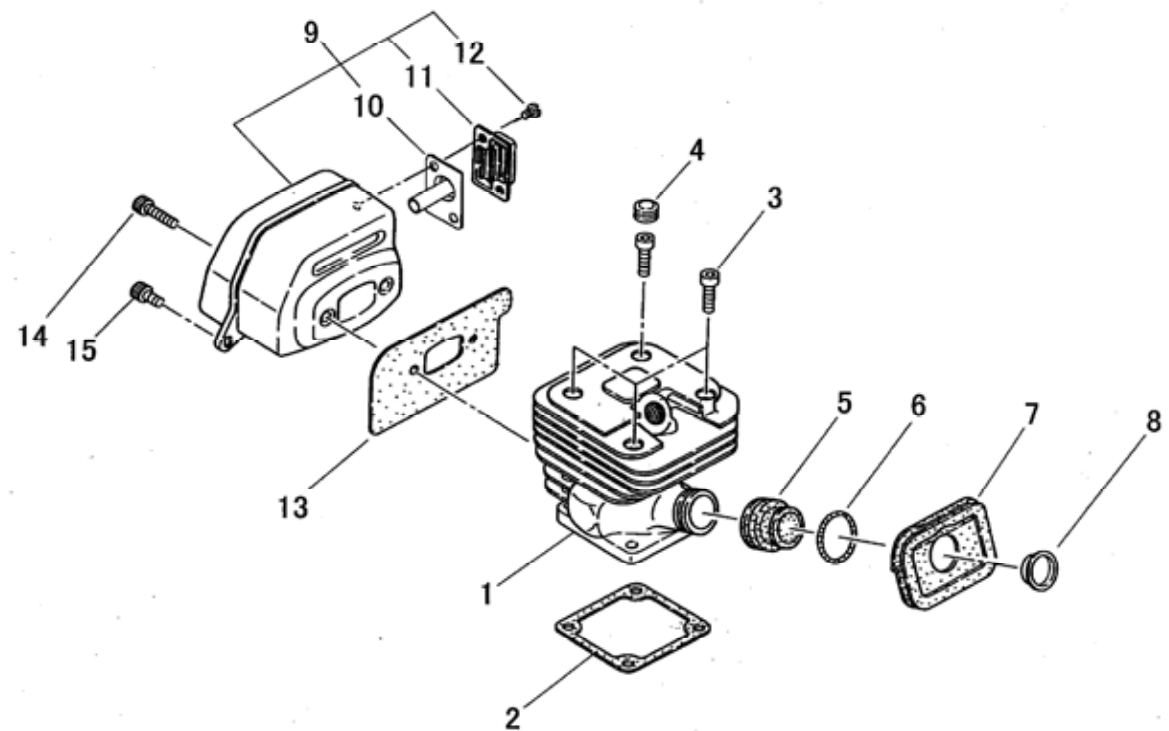
6-2-11,Ozuka-Nishi, Asaminami-ku, Hiroshima, 731-3167, Japan

Telephone (082) 849-2005 Fax (082) 849-2481

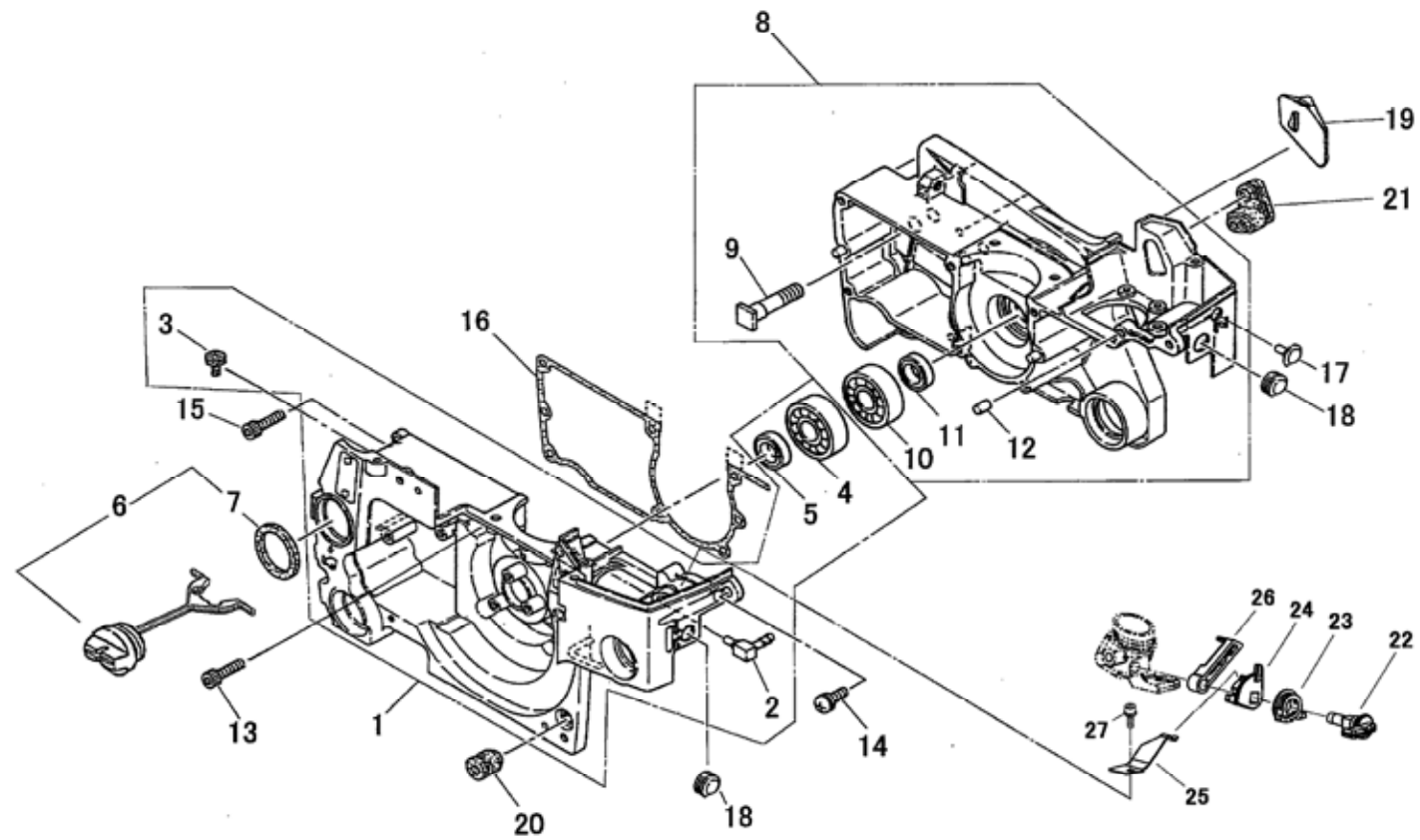
**4 9 0 / E C 1**

**M A R . 2 , 2 0 0 9**

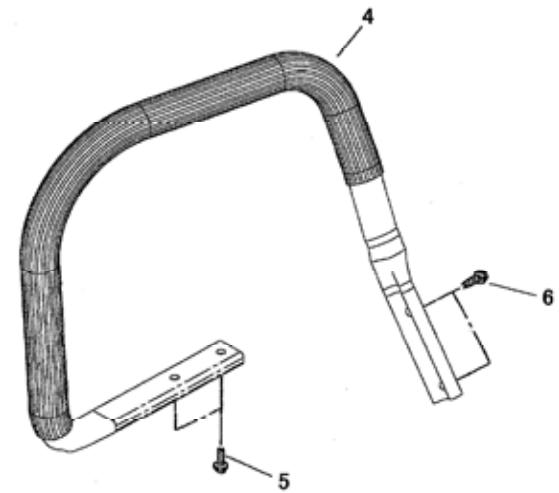
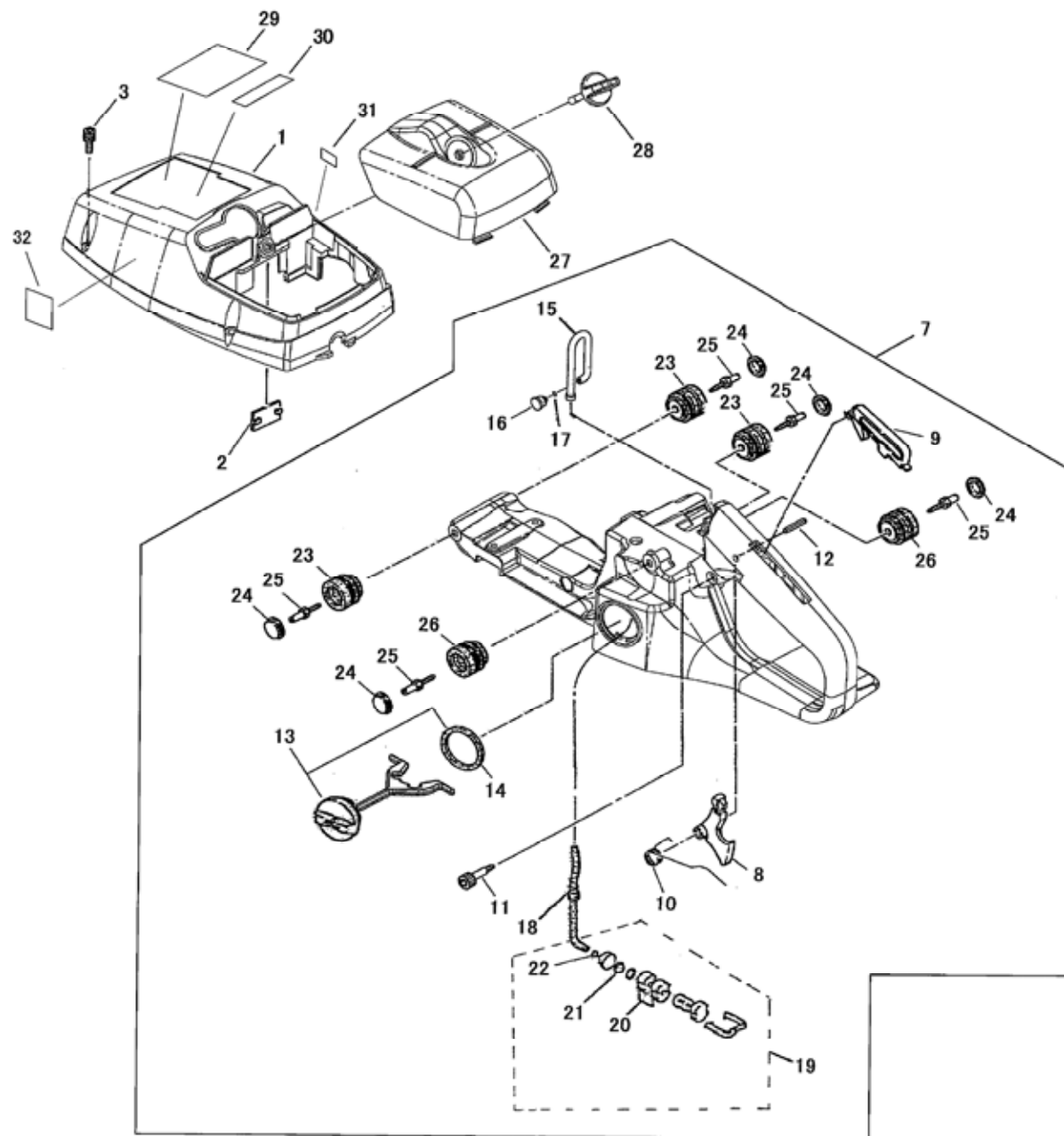
**P r i n t e d i n J a p a n**



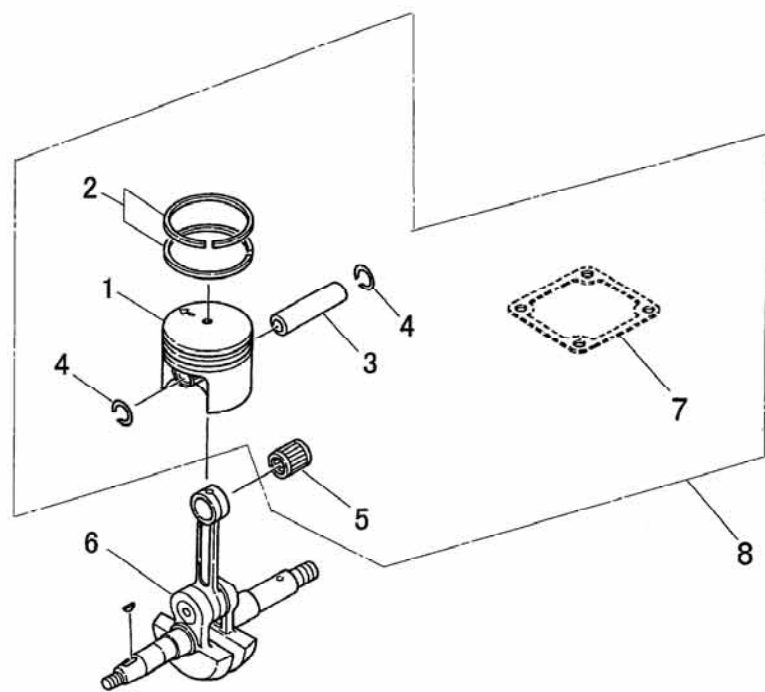
PRICE:(\$)  
[illegible]



PRICE:(\$)  
[illegible]

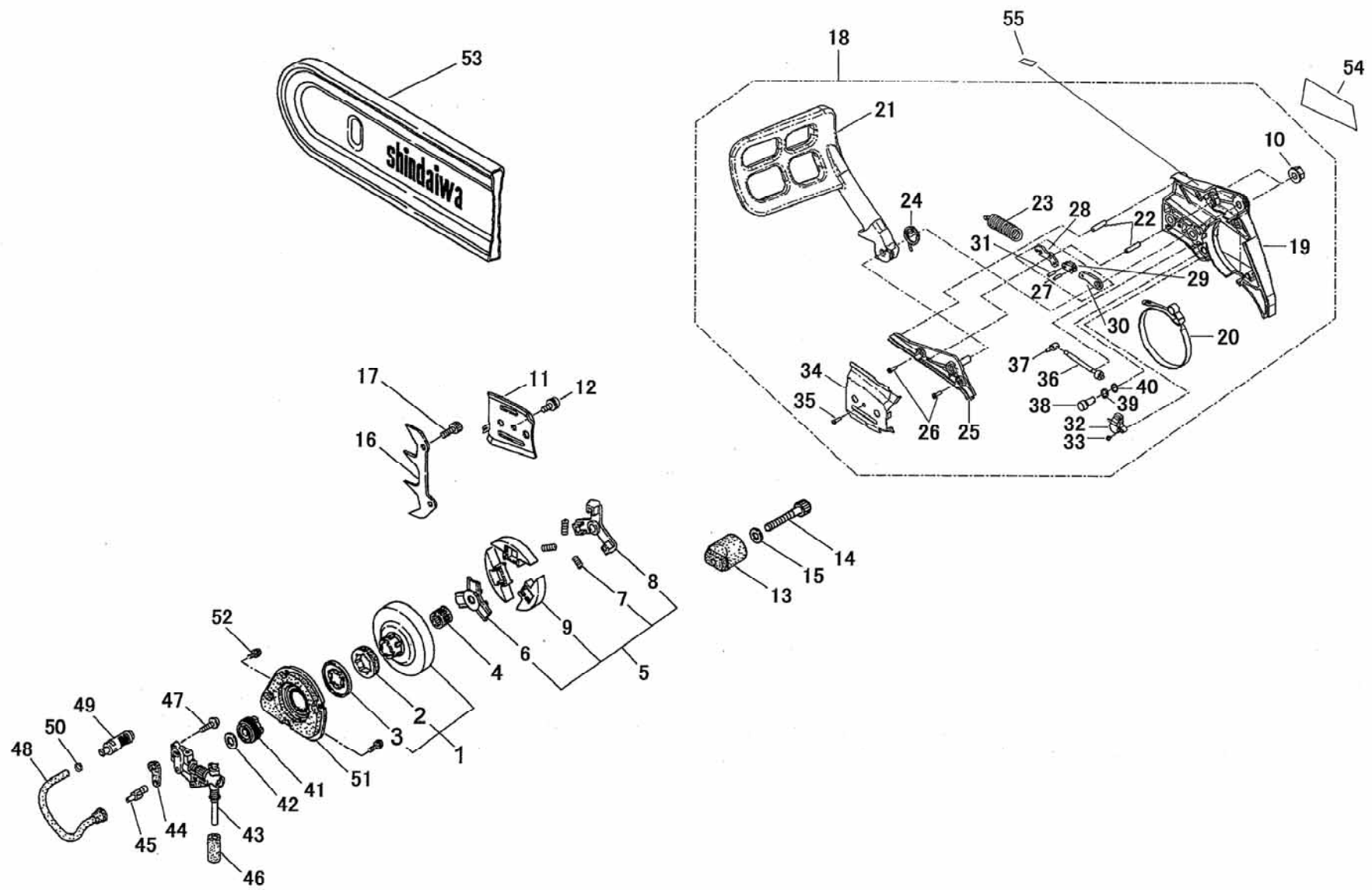


PRICE:(\$)  
[illegible]





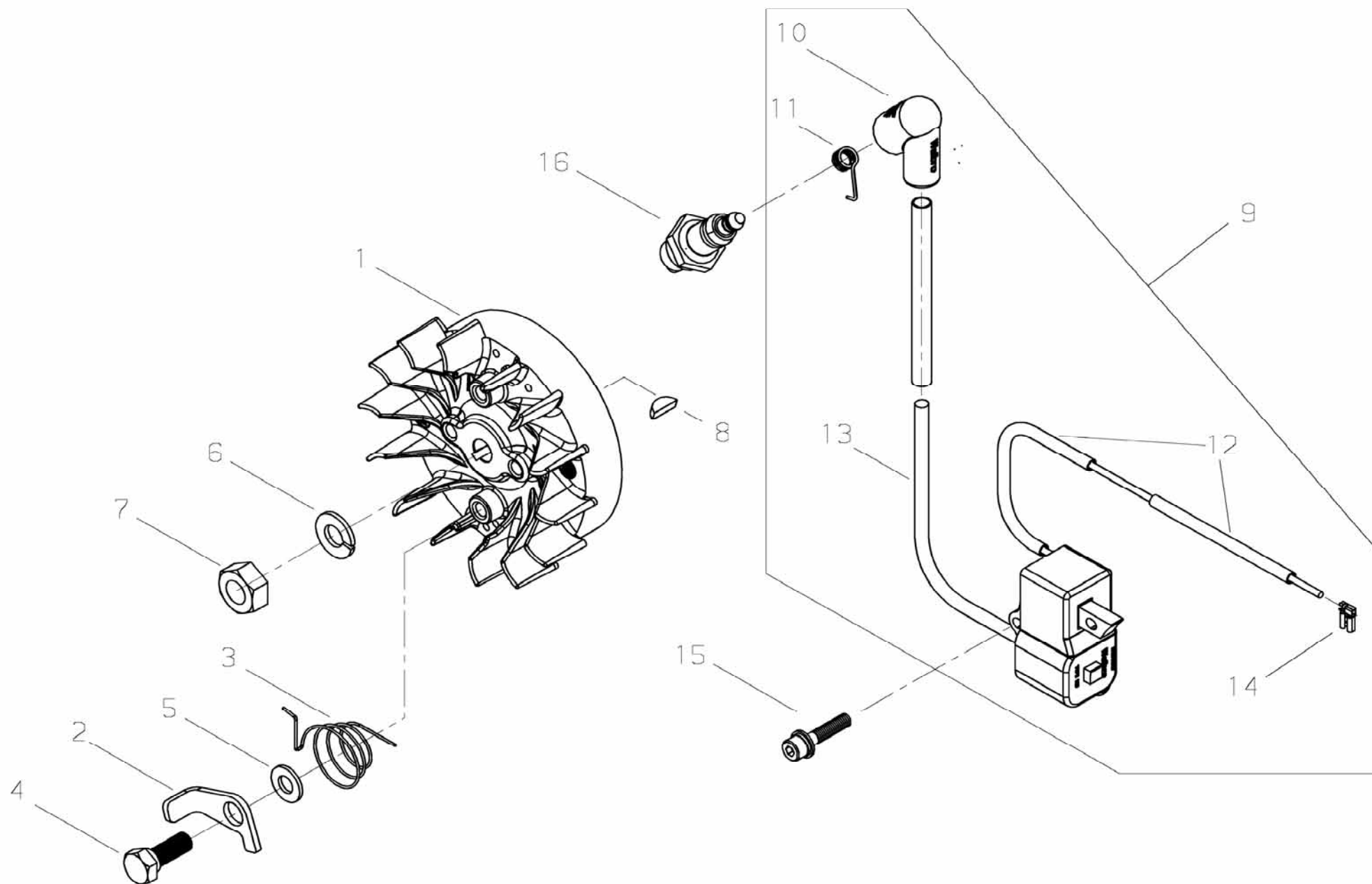
PRICE:(\$)  
[illegible]



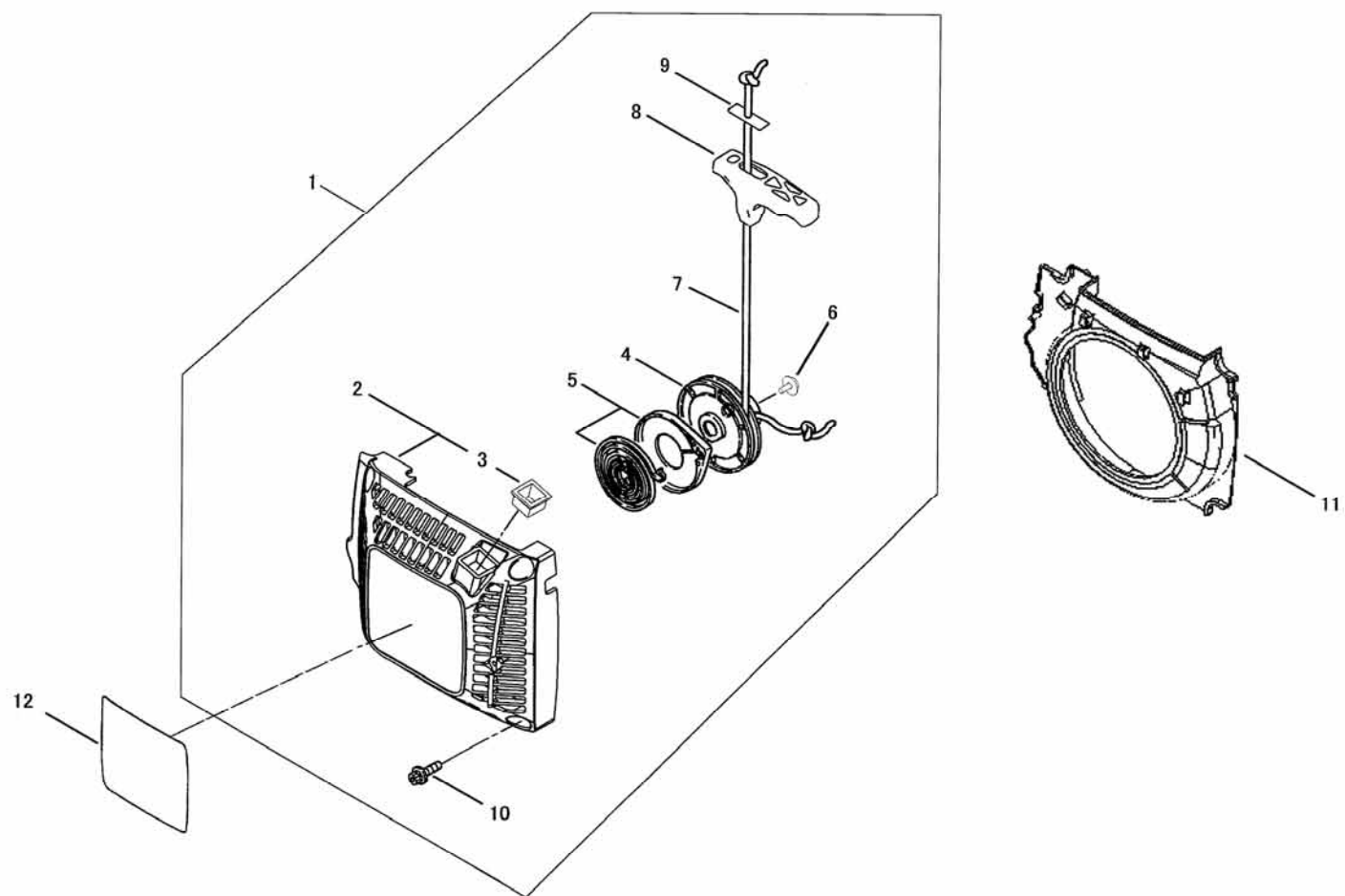
PRICE:(\$)

Ref. No.	Part No.	Part Name	Q`ty	Unit Price(\$)	Remarks
5-1	22160-51501	CLUTCH DRUM ASSY	1		
2	22131-98120	*RIM	1		
3	22160-51530	*COVER	1		
4	22100-51310	NEEDLE BEARING	1		
5	22160-51200	CLUTCH ASSY	1		
6	22160-51210	*CLUTCH BOSS,A	1		
7	22160-51230	*COIL SPRING	3		
8	22160-51240	*CLUTCH BOSS,B	1		
9	22160-51220	*CLUTCH SHOE	3		
10	22182-52411	NUT	2		
11	22160-97630	GUIDE PLATE,C	1		
12	22173-56150	SCREW	1		
13	22160-52511	CHAIN CATCHER	1		
14	22155-12190	BOLT	1		
15	01611-05100	WASHER	1		5mm
16	22160-52530	SPIKE	1		
17	22157-15330	BOLT	2		
18	69020-53010	CLUTCH COVER ASSY	1		
19	69020-53111	*CLUTCH COVER	1		
20	69020-53211	*BRAKE BAND	1		
21	69020-53221	*LEVER	1		
22	12492-50210	*ROLLER	2		φ5×L21.8
23	17510-16000	*COIL SPRING	1		
24	17520-20000	*COIL SPRING	1		
25	69020-53351	*COVER	1		
26	01280-05142	*SCREW,TAPPING	2		5x14
27	69020-53360	*LINK COMP	1		
28	69020-53311	**INNER LEVER	1		
29	69020-53321	**TIE STRAP	1		
30	69020-53331	**LINK	1		
31	12492-30110	**ROLLER	2		φ3xL11.8
32	69020-52321	*COVER	1		
33	01270-03122	*SCREW,TAPPING	1		3x12
34	69020-53121	*GUIDE PLATE	1		
35	22188-54120	*SCREW,TAPPING	1		
36	69020-52111	*SLIDE SCREW	1		
37	69020-52121	*SLIDE PIECE	1		
38	69020-52311	*GEAR	1		

PRICE:(\$)  
[illegible]

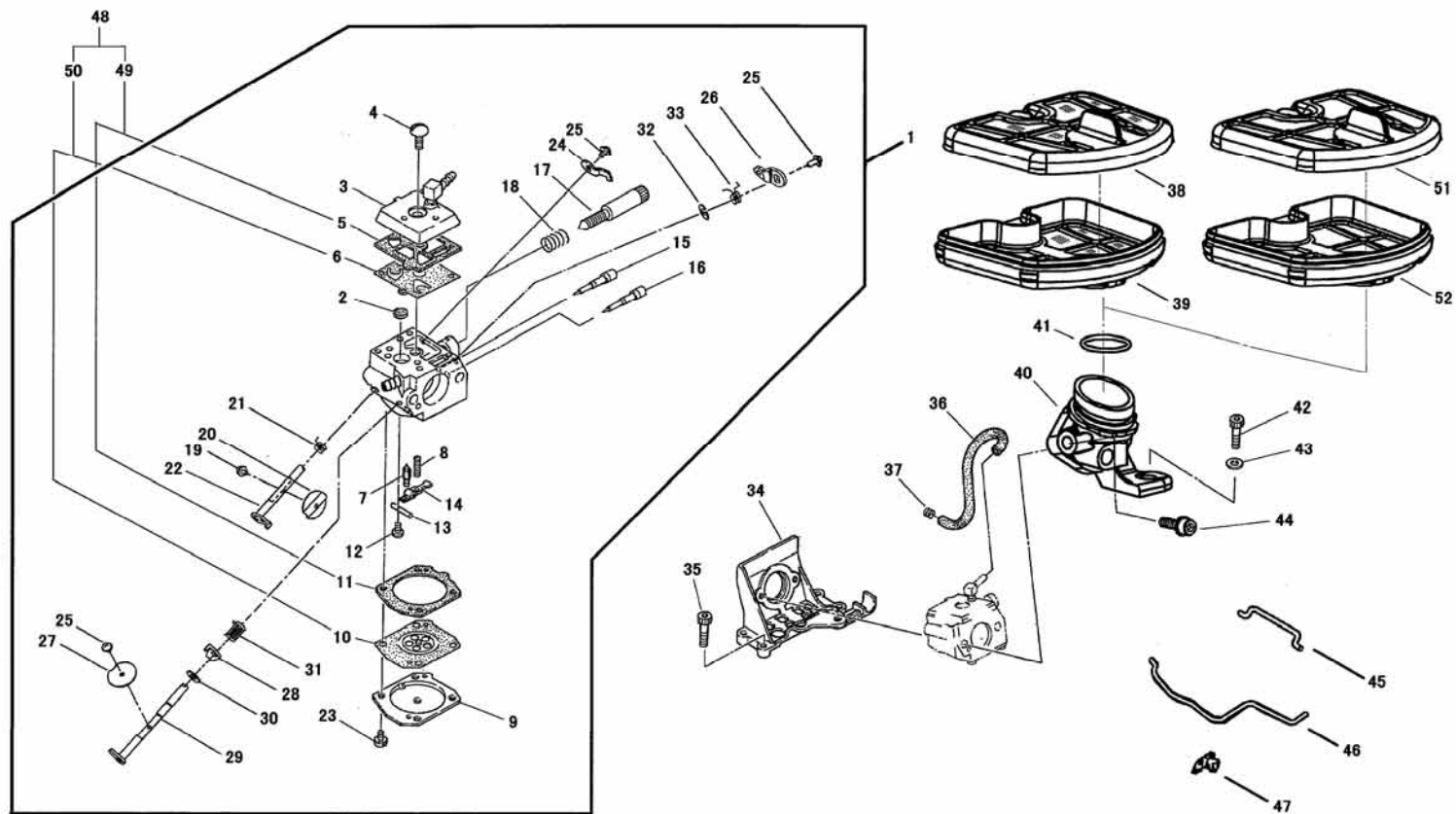


PRICE:(\$)  
[illegible]



PRICE:(\$)  
[illegible]

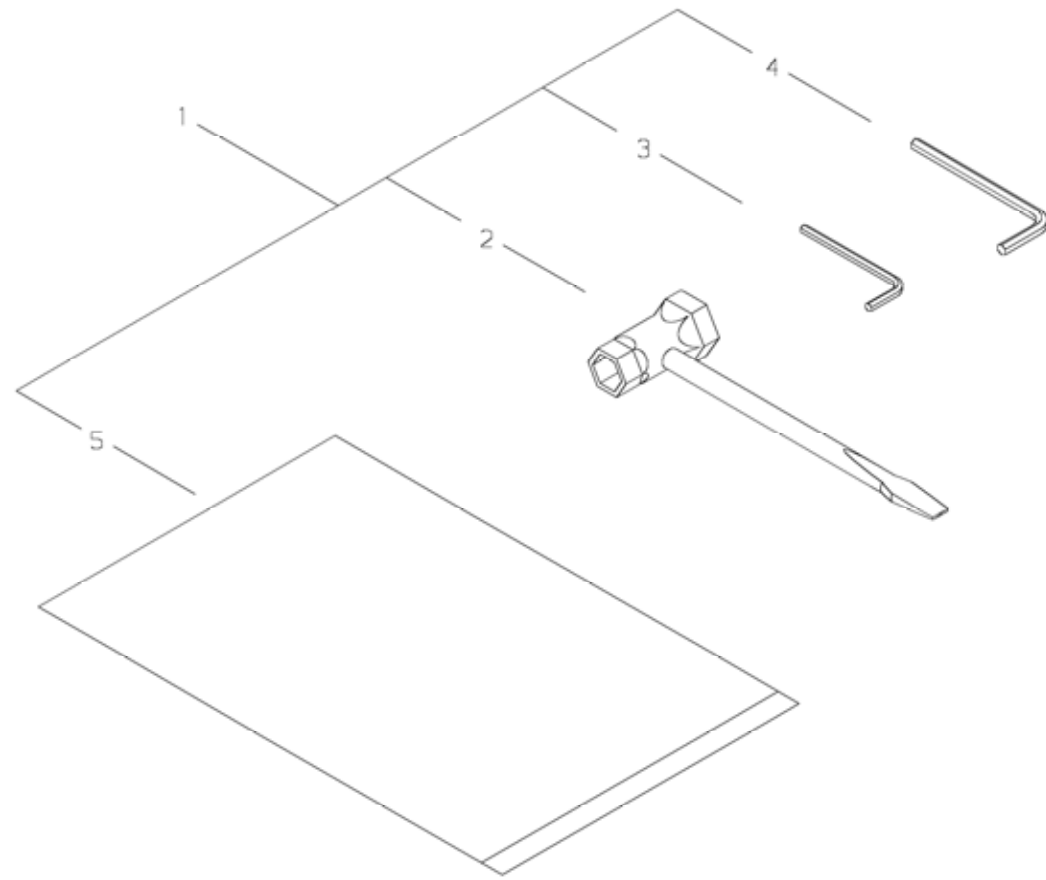




PRICE:(\$)

Ref. No.	Part No.	Part Name	Q`ty	Unit Price(\$)	Remarks
8-1	69020-81010	CARBURETOR ASSY	1		
2	70030-81380	*SCREEN	1		
3	72365-81120	*PUMP COVER ASSY	1		
4	22100-81130	*SCREW	1		
5	22150-81140	*GASKET,PUMP	1		
6	22150-81150	*DIAPHRAGM,PUMP	1		
7	20036-81440	*NEEDLE VALVE	1		
8	72342-81270	*SPRING,LEVER	1		
9	22150-81280	*COVER,DIAPHRAGM	1		
10	22150-81260	*DIAPHRAGM ASSY	1		
11	22150-81290	*GASKET	1		
12	22100-81240	*SCREW	1		
13	22100-81250	*PIN	1		
14	22160-81230	*LEVER	1		
15	69026-81320	*NEEDLE	1		
16	69020-81320	*NEEDLE	1		
17	22156-81410	*IDLE SCREW	1		
18	22156-81420	*SPRING,IDLE	1		
19	20803-81140	*SCREW	1		
20	22100-81340	*THROTTLE VALVE	1		
21	22150-81430	*RETURN SPRING	1		
22	39309-81320	*THROTTLE SHAFT	1		
23	22100-81351	*SCREW	4		
24	22160-81390	*STOPPER	1		
25	20803-81150	*SCREW	3		
26	69020-81330	*CHOKE LEVER	1		
27	22160-81710	*CHOKE VALVE	1		
28	39309-81350	*LEVER	1		
29	39309-81340	*CHOKE SHAFT	1		
30	20036-81185	*WASHER	1		
31	69020-81340	*COIL SPRING	1		
32	70030-81390	*STOPPER	1		
33	69020-81350	*COIL SPRING	1		
34	22160-82111	MOUNT	1		
35	11024-04160	BOLT-SLPW	4		M4x16
36	22160-82210	PULSE PIPE	1		
37	22150-82140	CLIP,PULSE	1		
38	69020-82321	AIR CLEANER,UPPER	1		

PRICE:(\$)  
[illegible]



PRICE:(\$)  
[illegible]