

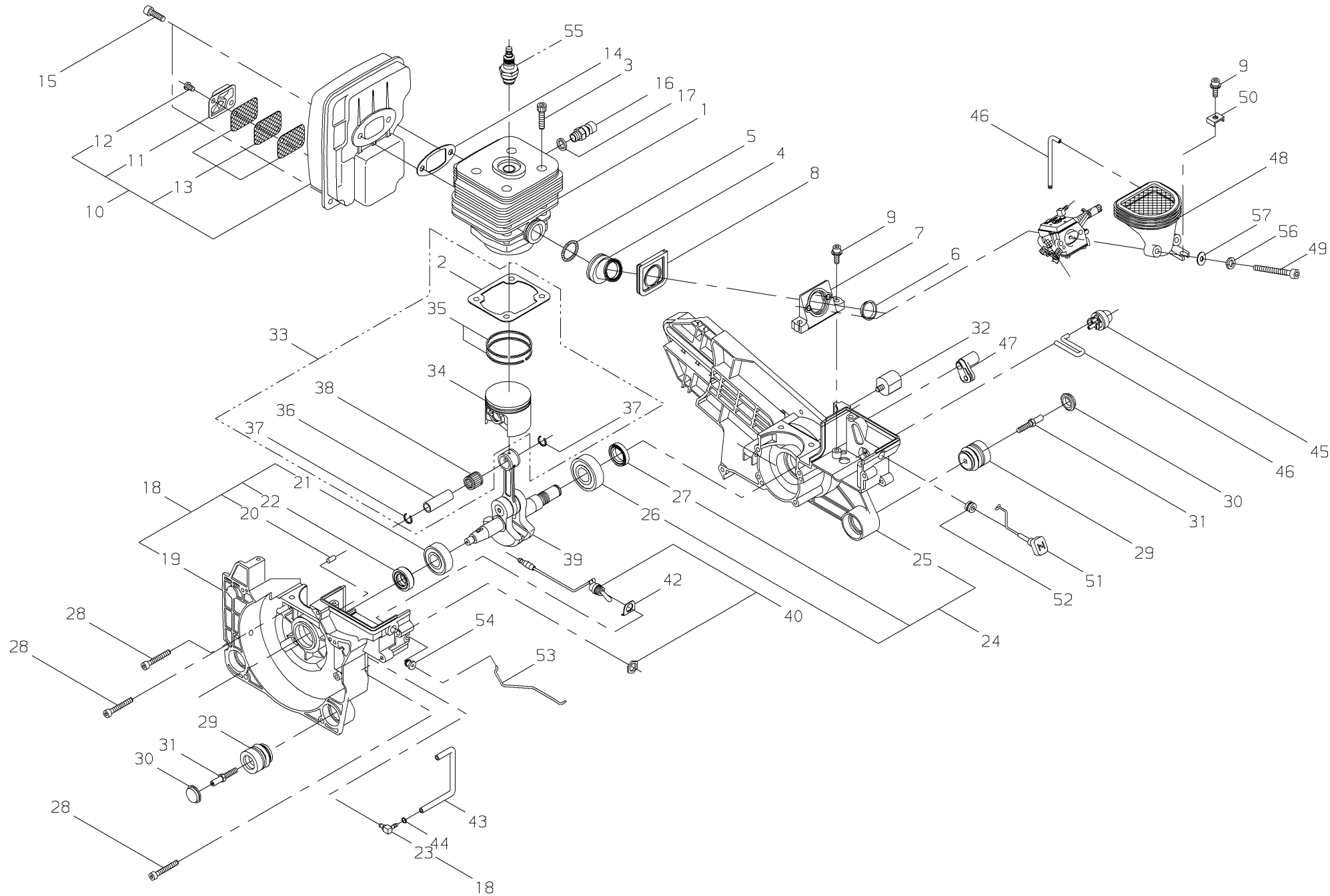
shindaiwa

Illustrated Parts List

EC7500/EC1
EC7600/EC1

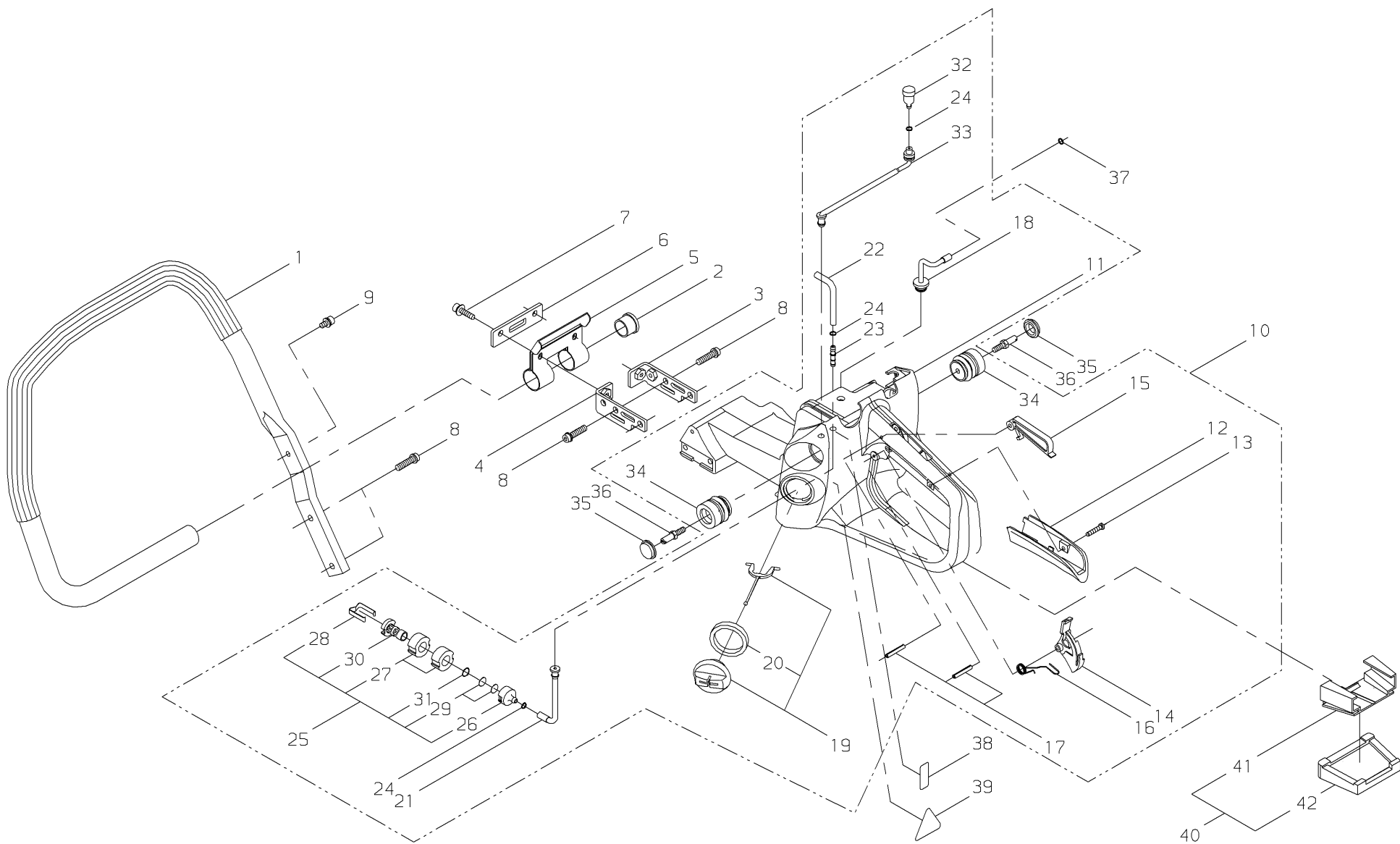
Shindaiwa, Inc.
11975 S.W. Herman Road
Tualatin, Oregon 97062
Telephone 503 692-3070
Fax 503 692-6696

EC7500/EC1
EC7600/EC1
REV August 1, 2005

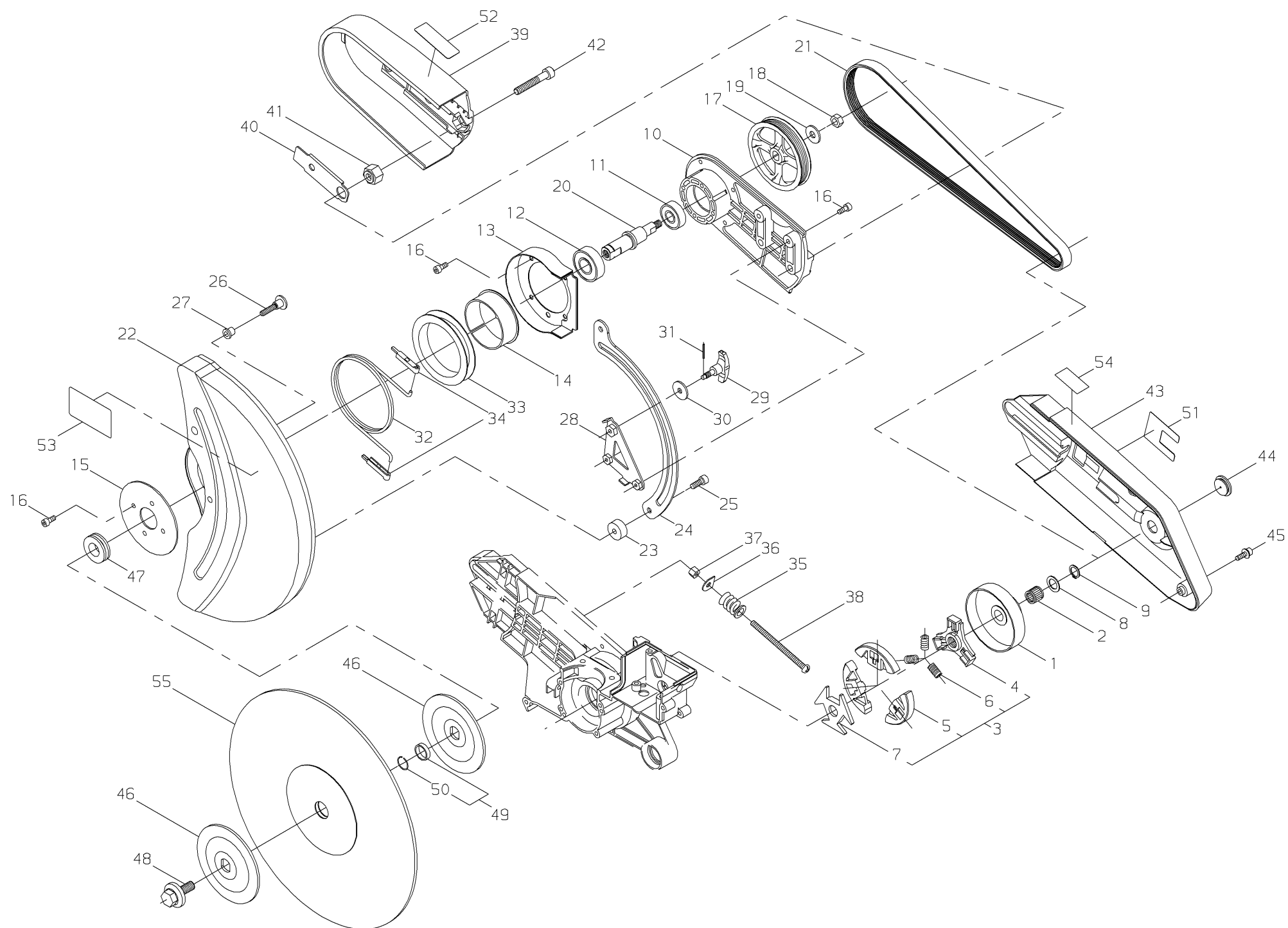


Ref. No	Part No.	Part Name	Qty	Remarks,Serial No.
1- 1	38010-12112	CYLINDER	1	
3	22169-12190	BOLT	4	
4	38010-12210	BOOTS	1	
5	22182-12160	SPRING	1	
6	22150-12170	SLEEVE	1	
7	38010-12220	BRACKET	1	
8	38010-12230	SEAL	1	
9	11060-05141	BOLT ADHESIVE	3	
10	68006-15010	MUFFLER ASSY.	1	
11	38010-15140	*TAIL PLATE	1	
12	11203-05080	*SCREW PM	2	
13	68006-15130	*SCREEN	3	
14	38010-15210	GASKET	1	
15	11060-06200	BOLT ADHESIVE	4	
16	38010-16110	DECOMPRESSION	1	
17	22173-16160	GASKET	1	
18	68000-21012	CRANKCASE M COMP.	1	
19	68000-21112	*CRANKCASE M	1	
20	12492-50100	*DOWEL PIN	2	
21	02030-06202	*BEARING	1	
22	22155-21630	*OIL SEAL	1	
23	22150-21220	*PULSE JOINT	1	
24	38010-21021	CRANKCASE C COMP.	1	
25	38010-21211	*CRANKCASE C	1	
26	02030-06203	*BEARING	1	
27	22169-21630	*OIL SEAL	1	
28	22169-21910	BOLT	6	
29	72330-33710	CUSHION 26	4	
30	22150-33720	PLUG 26	4	
31	22169-33770	STOPPER BOLT	4	
32	20050-87160	CUSHION	1	
33	68004-98311	PISTON ASSY.	1	
2	38010-12120	*GASKET	1	
34	38010-41110	*PISTON	1	
35	22169-41210	*PISTON RING	2	
36	22169-41220	*PISTON PIN	1	
37	22155-41230	*SNAP RING	2	
38	22155-41281	*BEARING SE	1	
39	38010-42010	CRANKSHAFT	1	
40	68000-71340	SWITCH ASSY.	1	

[illegible]

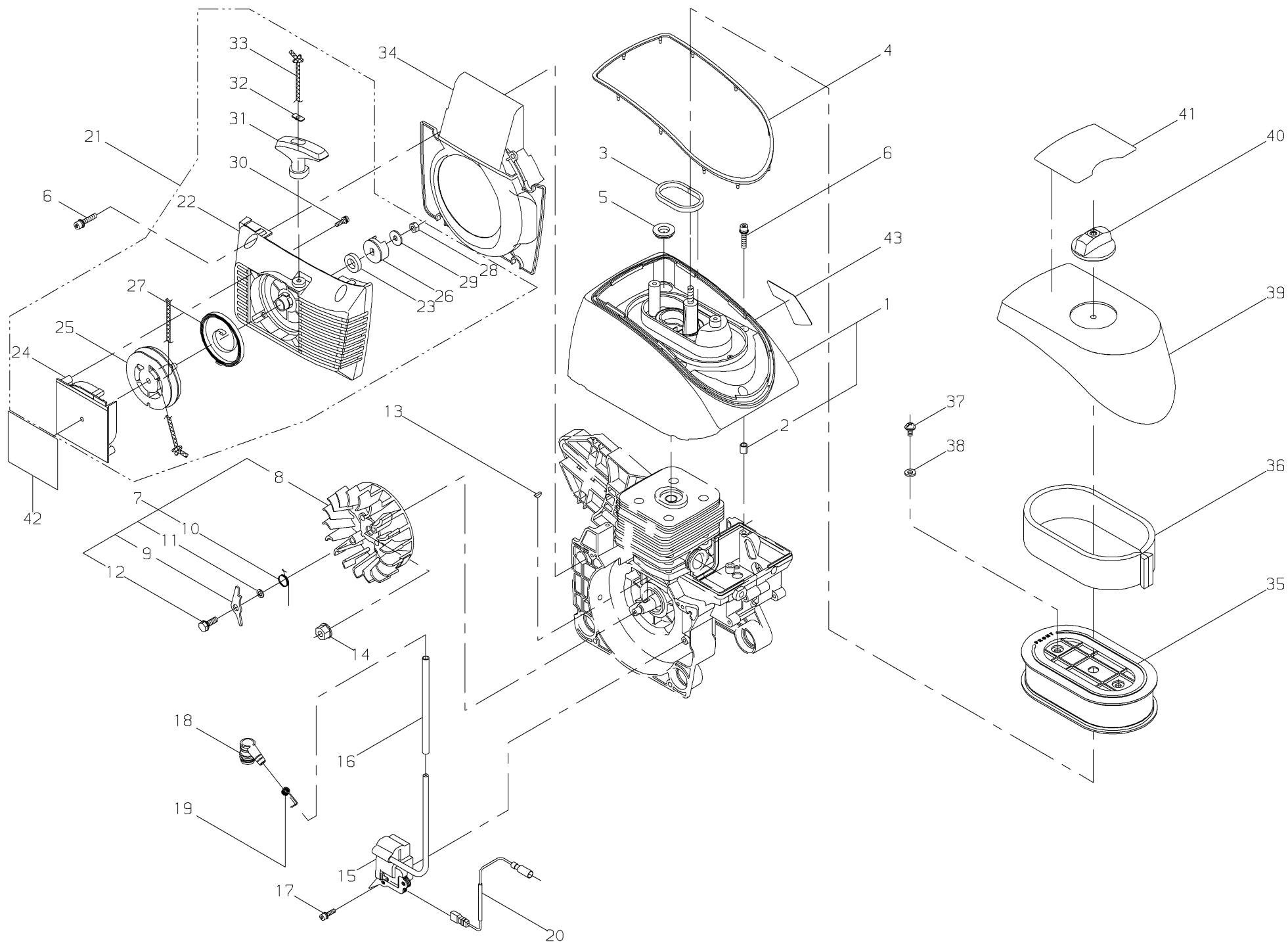


Ref. No	Part No.	Part Name	Qty	Remarks,Serial No.
2- 1	38010-32110	FRONT HANDLE	1	
2	38010-32440	CAP	1	
3	38010-32460	BRACKET RIGHT	1	
4	38010-32470	BRACKET LEFT	1	
5	38010-32330	BRACKET	1	
6	38010-32480	PLATE	1	
7	11060-05204	BOLT ADHESIVE	2	
8	22169-32220	BOLT PC	6	
9	11022-05100	BOLT SPW	1	
10	38010-32025	REAR HANDLE ASSY.	1	
11	38010-32211	*REAR HANDLE	1	
12	22182-33230	*GRIP	1	
13	01280-04202	*SCREW TAPPING	1	
14	22182-33325	*THROTTLE LEVER	1	
15	22182-33331	*LOCK LEVER	1	
16	22182-33340	*SPRING LEVER	1	
17	12420-40255	*SPRING PIN	2	
18	38010-32371	*PIPE	1	
19	38010-32041	*CAP ASSY.	1	
20	38010-32271	**GASKET	1	
21	38010-32381	*PIPE	1	
22	38010-32390	*PIPE	1	
23	72933-85620	*JOINT	1	
24	20020-85540	*CLIP	3	
25	38010-32420	*FUEL FILTER SUB ASSY.	1	
26	22128-85410	**FUEL LINE WEIGHT	1	
27	38010-32430	**FILTER	2	
28	22128-85440	**CLIP FILTER	1	
29	22118-85460	**SCREEN	2	
30	22128-85470	**SLEEVE	1	
31	22128-85480	**RING	1	
32	20800-33910	*VALVE	1	
33	38010-32412	*PIPE	1	
34	72330-33710	*CUSHION 26	2	
35	22150-33720	PLUG 26	2	
36	22150-33770	STOPPER BOLT 26	2	
37	20020-85540	CLIP	1	
38	19401-00256	LABEL INST.	1	
39	19402-00221	LABEL CAUTION	1	
40	38010-32500	RUBBER FOOT COMP.	1	
41	38010-32510	*HOLDER	1	
42	38010-32520	*RUBBER FOOT	1	

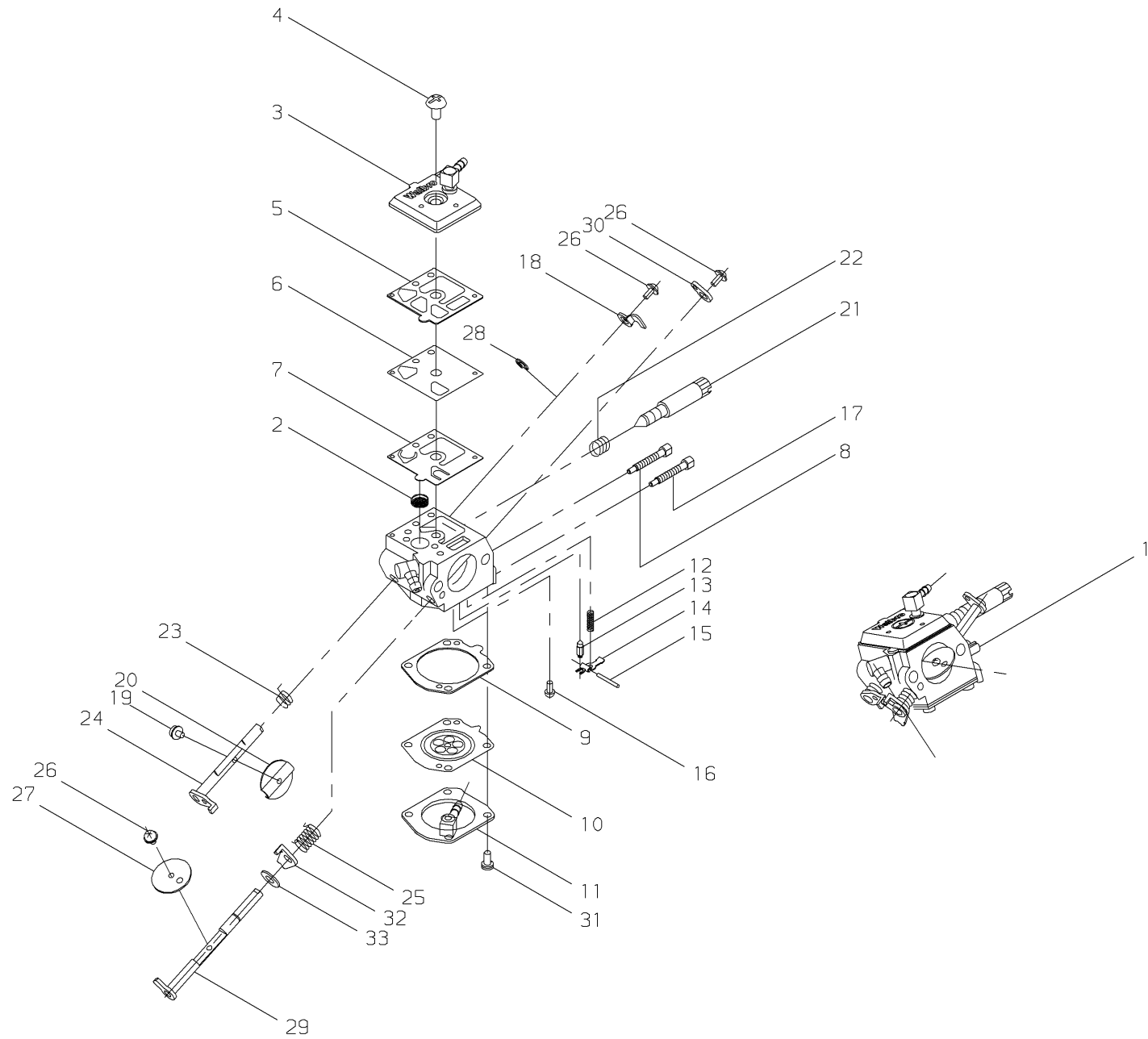


Ref. No	Part No.	Part Name	Qty	Remarks,Serial No.
3- 1	38011-51110	CLUTCH DRUM	1	EC7600/EC1
1	38010-51110	CLUTCH DRUM	1	EC7500/EC1
2	38010-51320	NEEDLE BEARING	1	
3	22169-51200	CLUTCH ASSY.	1	
4	22169-51210	*CLUTCH BOSS A	1	
5	22169-51220	*CLUTCH SHOE	3	
6	22150-51230	*CLUTCH SPRING	3	
7	22169-51240	*CLUTCH BOSS B	1	
8	22150-55120	THRUST PLATE	1	
9	02430-13100	SNAP RING	1	
10	38010-63110	BEARING CASE	1	
11	02006-06201	BEARING	1	
12	02006-06203	BEARING	1	
13	38010-63330	SPRING PLATE	1	
14	38010-63310	SLIDE RING	1	
15	38010-63320	BEARING PLATE	1	
16	01020-05160	BOLT	10	
17	38010-64111	DRIVE PULLY	1	
18	01500-08061	NUT	1	
19	15401-20007	COLLAR	1	
20	38010-64120	DRIVE SHAFT	1	
21	38010-64130	DRIVE BELT	1	
22	38011-65112	WHEEL GUARD	1	EC7600/EC1
22	38010-65112	WHEEL GUARD	1	EC7500/EC1
23	15401-20101	COLLAR	2	
24	68002-65330	SLIDE PLATE	1	
25	01020-06200	BOLT	2	
26	20087-51210	BOLT	2	
27	15401-00008	COLLAR	2	
28	38010-65330	LOCK PLATE	1	
29	68002-65341	KNOB	1	
30	15401-20008	COLLAR	1	
31	02427-20125	PIN	1	
32	17520-98200	COIL SPRING	1	
33	38010-65360	SPRING GUIDE	1	
34	38010-65370	SPRING HOLDER	2	
35	17500-17500	COIL SPRING	1	
36	38010-66330	WASHER	1	
37	38010-66310	NUT	1	
38	38010-66320	SCREW ADHESIVE	1	

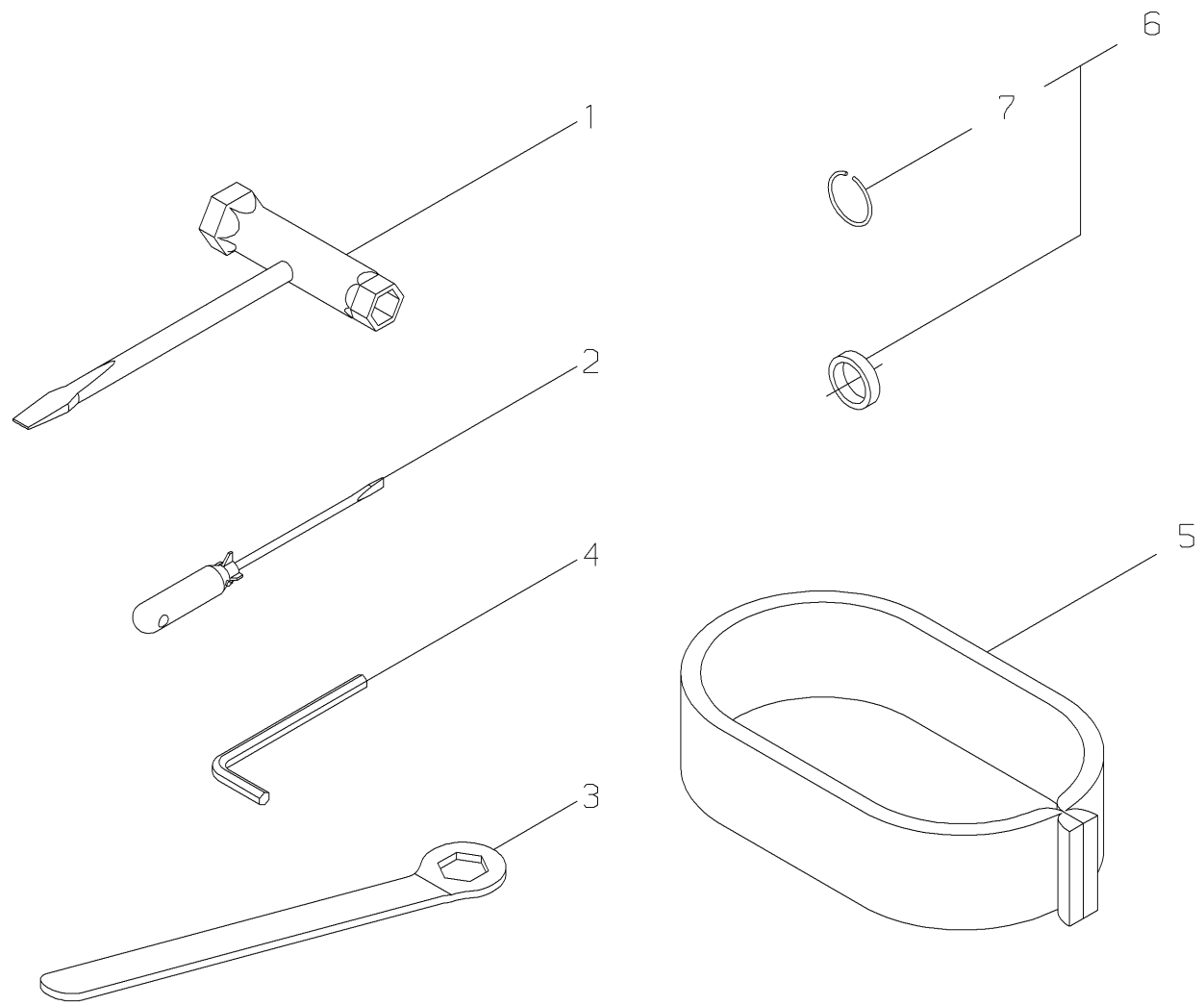
[illegible]



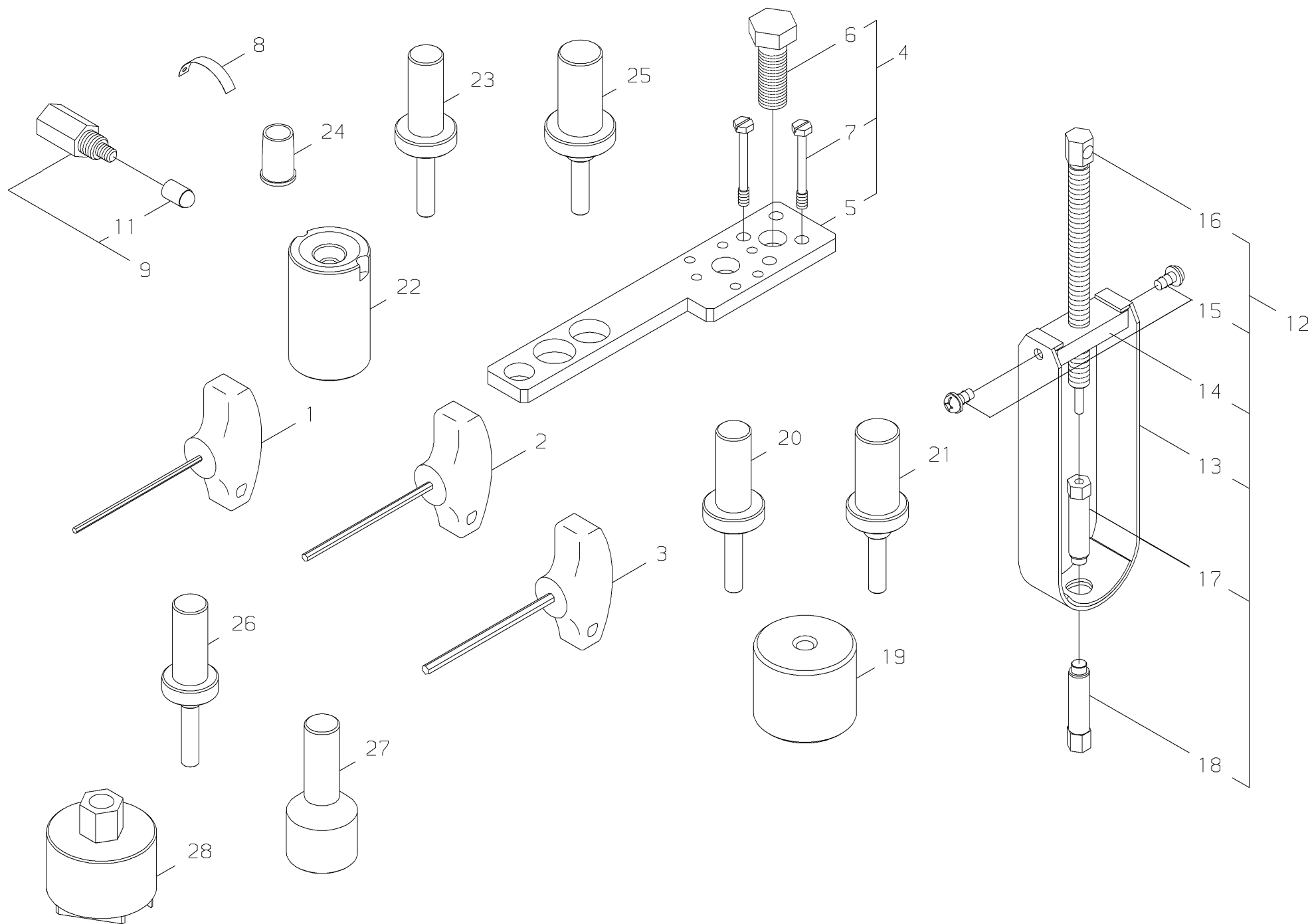
Ref. No	Part No.	Part Name	Qty	Remarks,Serial No.
4- 1	38010-31111	CYLINDER COVER	1	
2	17901-06100	*COLLAR	4	
3	38010-31311	SEAL	1	
4	38010-31321	SEAL SEAT	1	
5	38010-67351	PLUG	1	
6	22160-31150	BOLT SW	8	
7	38010-71011	ROTOR ASSY.	1	
8	38010-71112	*ROTOR	1	
9	38010-71120	*RATCHET	2	
10	17520-14801	*COIL SPRING	2	
11	15401-10030	*COLLAR	2	
12	22100-71441	*BOLT	2	
13	02403-03100	KEY	1	
14	22169-71460	NUT	1	
15	38010-71212	COIL	1	
16	38010-71320	TUBE	1	
17	11022-04160	BOLT SPW	2	
18	38010-71330	PLUG CAP	1	
19	22154-72230	SPRING PLUG	1	
20	14352-01700	LEAD WIRE	1	
21	38010-75011	RECOIL STARTER ASSY.	1	
22	38010-75310	*RECOIL CASE	1	
23	38010-75320	*OIL SEAL	1	
24	38010-75330	*COVER	1	
25	38010-75341	*REEL	1	
26	38010-75410	*DRUM	1	
27	38010-75360	*RECOIL SPRING	1	
28	01500-06051	*NUT	1	
29	38010-75370	*WASHER	1	
30	32003-77370	*SCREW SPW	4	
31	22104-75420	*KNOB RECOIL	1	
32	22104-75430	*STOPPER KNOB	1	
33	38010-75390	*ROPE	1	
34	38010-75210	AIR PLATE	1	
35	38010-82581	FILTER	1	
36	38010-82311	PRE FILTER	1	
37	38010-82561	SCREW PMSW	2	
38	38010-82590	COLLAR	2	
39	38010-82131	CLEANER COVER	1	
40	38010-82460	KNOB	1	
41	19422-00044	LABEL CAUTION	1	
42	38011-91020	LABEL TRADE	1	EC7600/EC1
42	38010-91020	LABEL TRADE	1	EC7500/EC1
43	19401-00300	LABEL INST.	1	



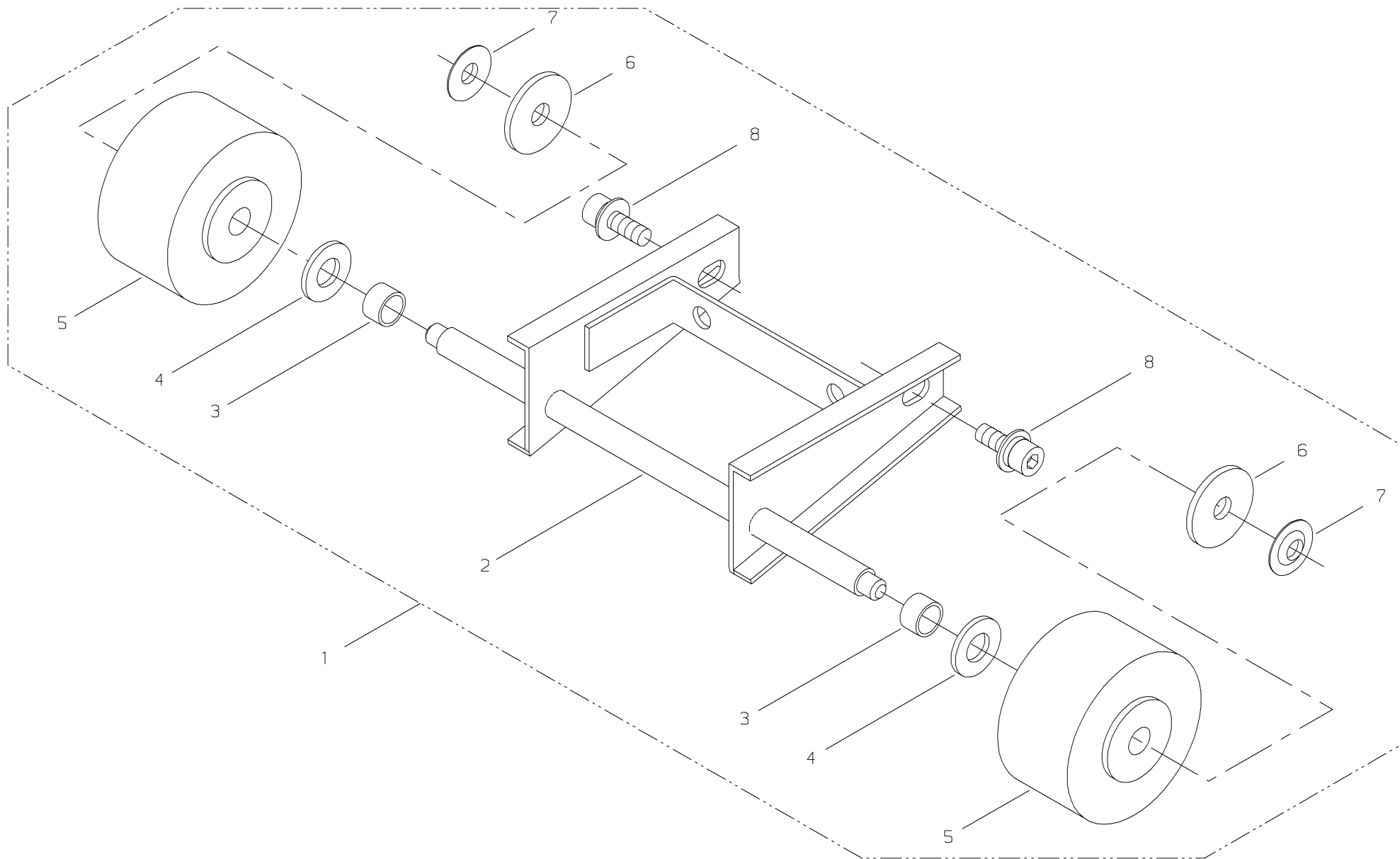
[illegible]



[illegible]



[illegible]



[illegible]