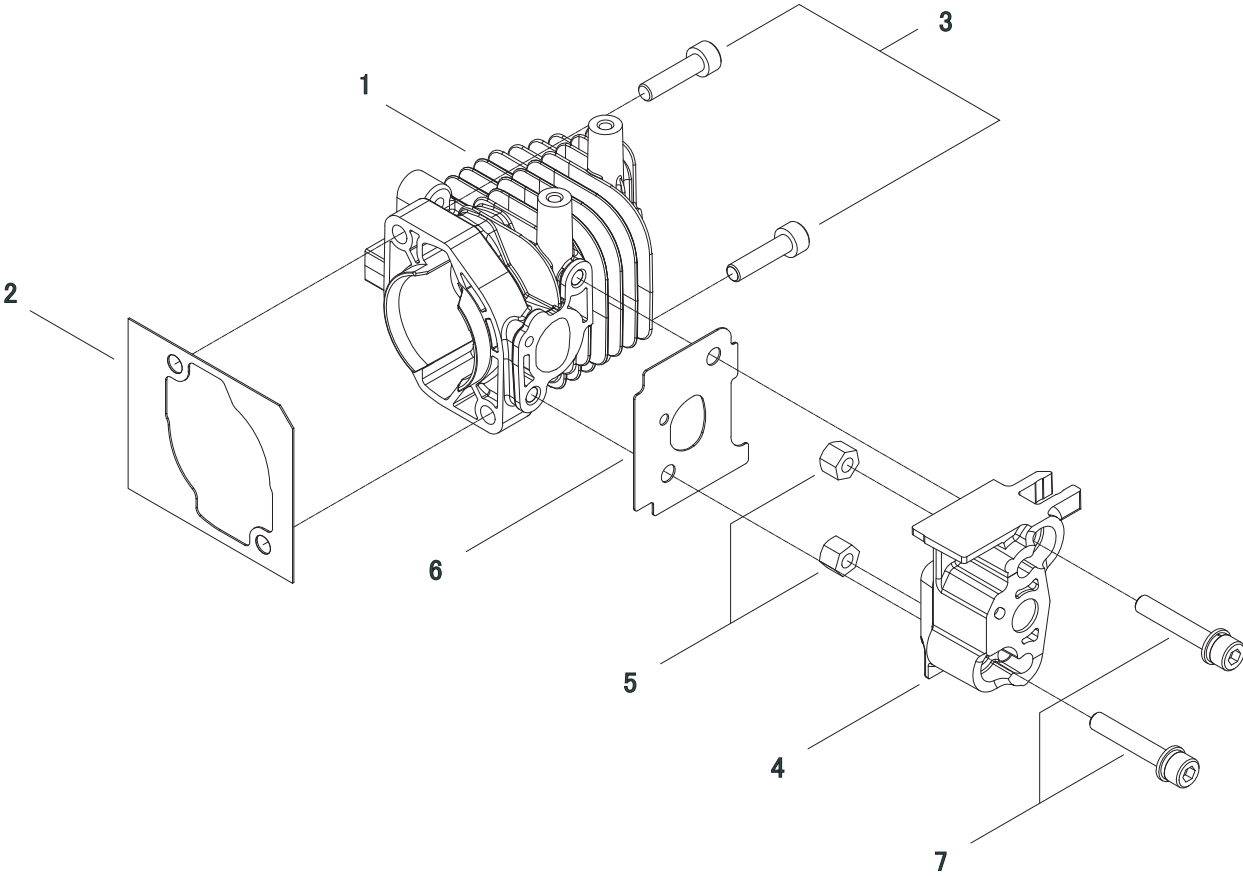
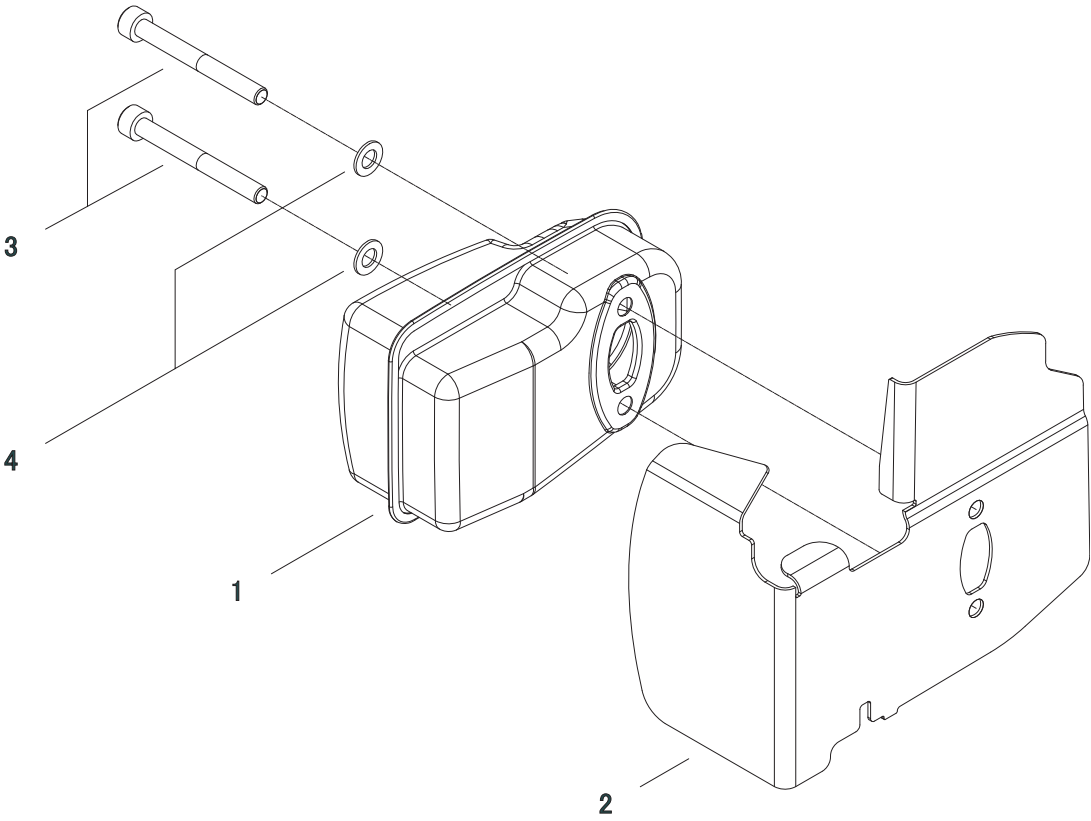




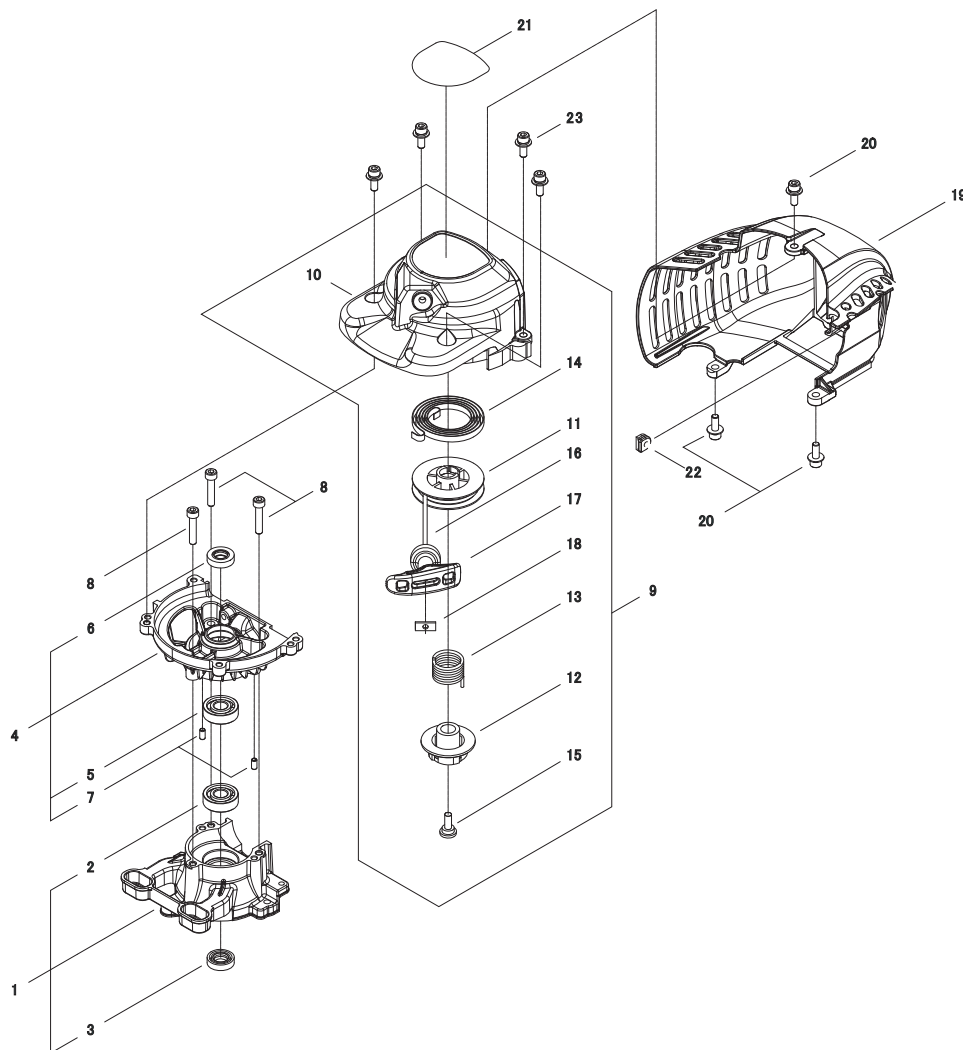
**PARTS CATALOGUE**  
**DH2200ST**



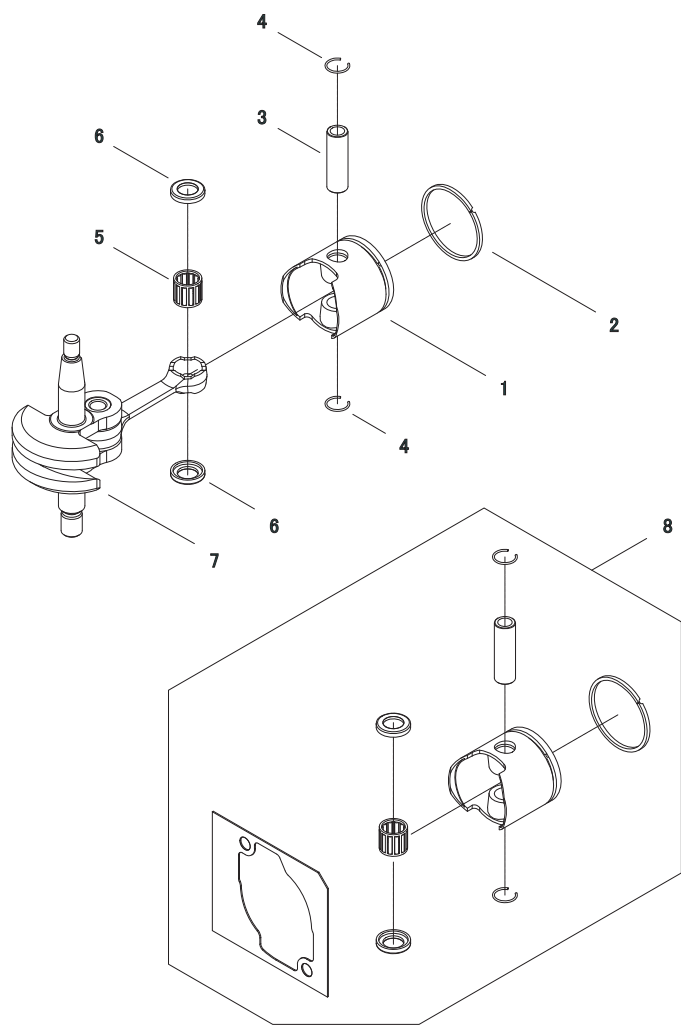
KEY	LV	PART NUMBER	Q'TY	DESCRIPTION	REMARKS
1		A130-001141	1	CYLINDER	
2		V100-000350	1	GASKET	
3		900105-05020	2	BOLT, H.S. 5*20	
4		A200-000760	1	INSULATOR	
5		V263-000260	2	NUT,5	
6		V103-001150	1	GASKET	
7		V203-000580	2	BOLT,5	



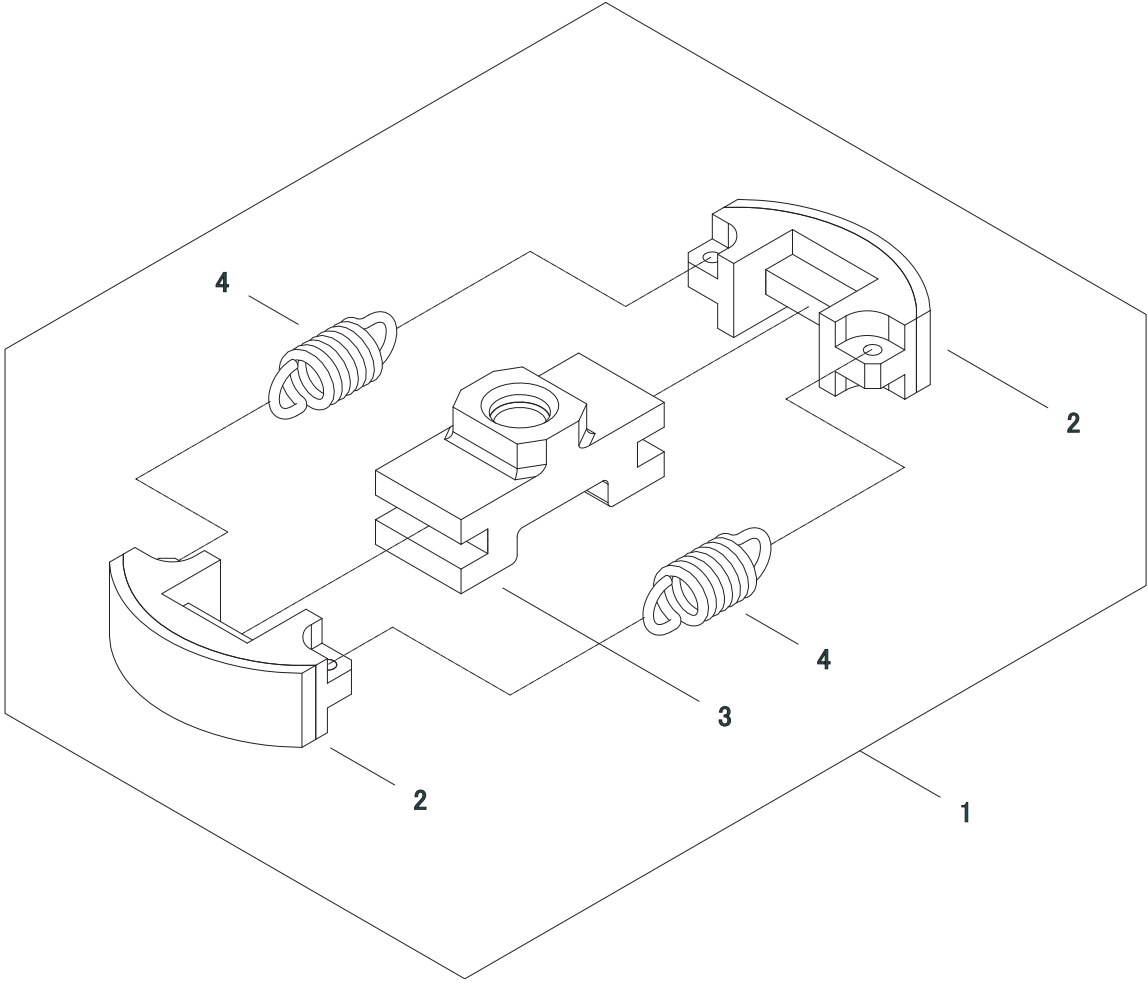
KEY	LV	PART NUMBER	Q'TY	DESCRIPTION	REMARKS
1		A300-000870	1	MUFFLER	
2		V104-001440	1	GASKET	
3		900105-05045	2	BOLT,H.S. 5*45	
4		900600-00005	2	WASHER 5	



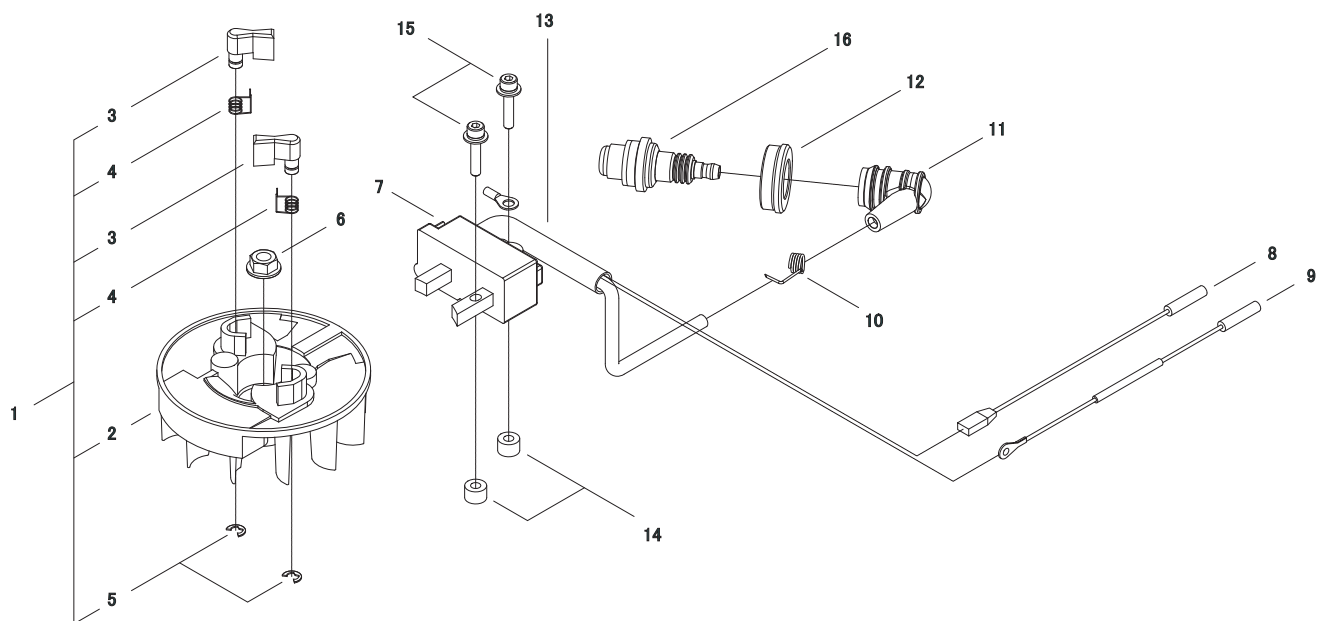
KEY	LV	PART NUMBER	Q'TY	DESCRIPTION	REMARKS
1		P021-034200	1	CRANKCASE, C-C	
2	+	V592-000300	1	BEARING, BALL	
3	+	V503-000010	1	SEAL, OIL	
4		P021-033830	1	CRANKCASE, M-C	
5	+	V592-000300	1	BEARING, BALL	
6	+	V503-000010	1	SEAL, OIL	
7	+	V622-000040	2	ROLLER	
8		900105-05025	3	BOLT, H.S. 5*25	
9		A051-001820	1	FAN COVER ASSY	
10	+	A500-001000	1	FAN COVER	
11	+	A506-000320	1	REEL	
12	+	C533-000140	1	CAM	
13	+	V452-000640	1	SPRING, TORSION	
14	+	A504-000100	1	RECOIL SPRING	
15	+	V253-000310	1	SCREW	
16	+	A509-000110	1	ROPE	
17	+	A511-000140	1	NOB	
18	+	A522-000040	1	STOPPER	
19		A160-001771	1	COVER, CYLINDER	
20		V203-001020	3	BOLT, 5	
21		X504-006440	1	LABEL, BRAND	
22		V136-000060	1	GROMMET	
23		V203-001020	4	BOLT, 5	



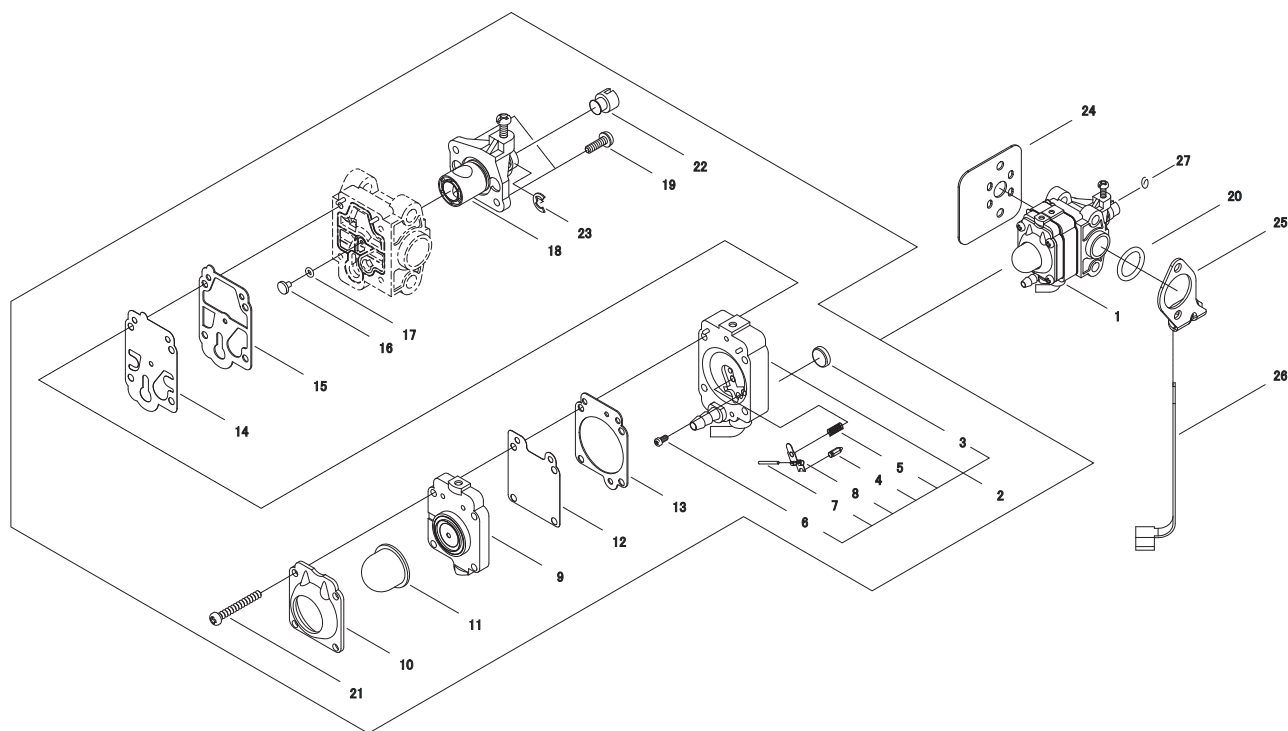
KEY	LV	PART NUMBER	Q'TY	DESCRIPTION	REMARKS
8		P021-034210	1	PISTON KIT	
1	+	A100-000900	1	PISTON	
2	+	A101-000230	1	RING,PISTON	
3	+	V606-000040	1	PIN,ENG	
4	+	V580-000070	2	RING,END	
5	+	V553-000090	1	BEARING,NEEDLE	
6	+	V306-000250	2	WASHER,CIRCULAR 8	
7		A011-000600	1	CRANKSHAFT	



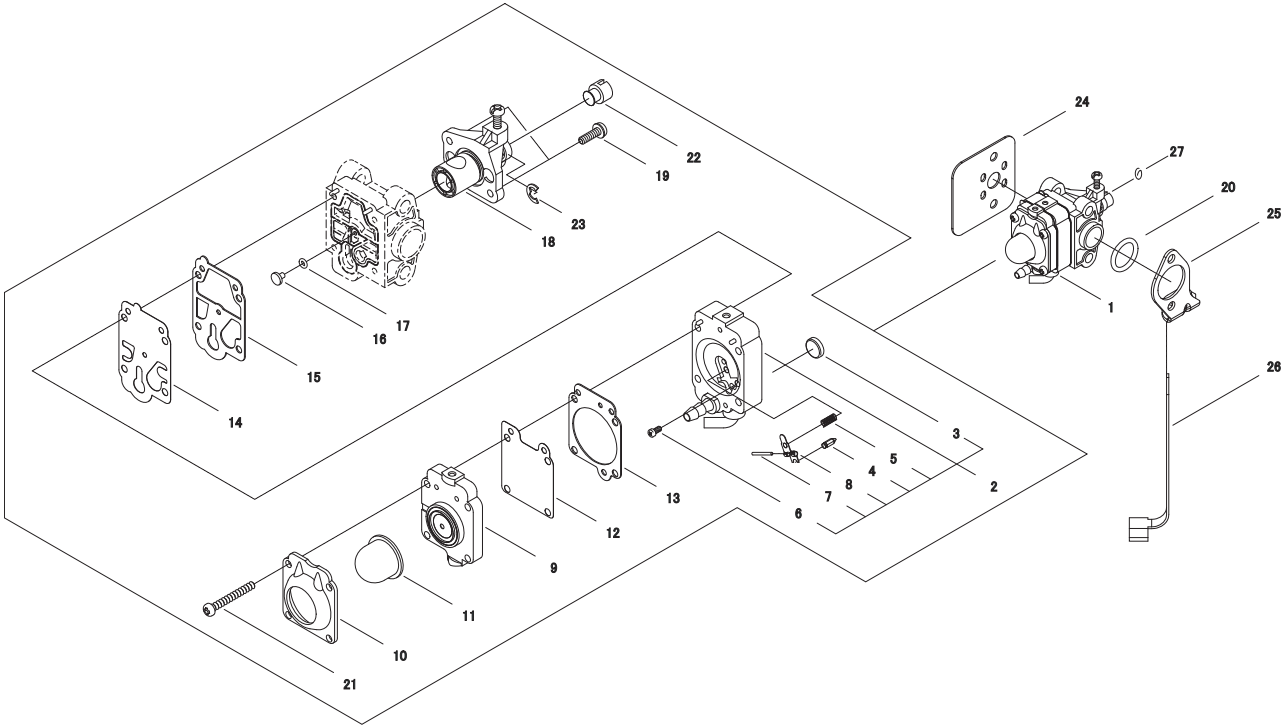
KEY	LV	PART NUMBER	Q'TY	DESCRIPTION	REMARKS
1		A056-000250	1	CLUCH	
2	+	A555-000140	2	SHOE,CLUTCH	
3	+	A552-000140	1	HUB,CLUTCH	
4	+	A566-000190	2	SPRING,CLUTCH	



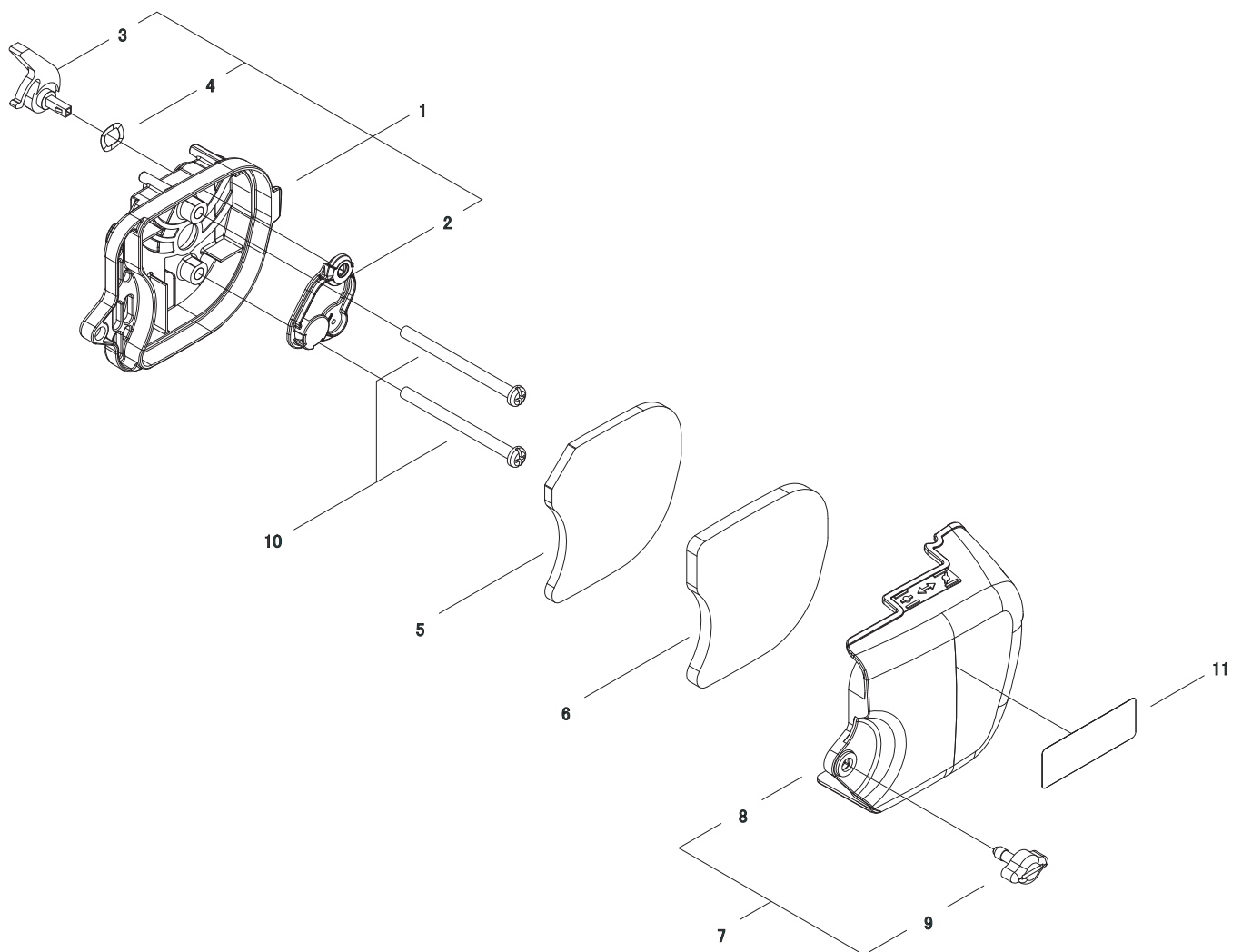
KEY	LV	PART NUMBER	Q'TY	DESCRIPTION	REMARKS
1		A409-000690	1	ROTOR, MAGNETO	
2	+	A409-000700	1	ROTOR	
3	+	A514-000090	2	PAWL, STARTER	
4	+	V452-000630	2	SPRING, TORSION	
5	+	V583-000140	2	RING	
6		V265-000150	1	NUT, 8	
7		A411-000840	1	COIL	
8		V485-002270	1	LEAD	
9		V485-002280	1	LEAD	
10		A426-000010	1	TERMINAL, SPARK PLUG	
11		A427-000013	1	CAP, SPARK PLUG	
12		A429-000090	1	COVER, CAP	
13		V475-005070	1	TUBE	
14		V352-000100	2	COLLAR, 4	
15		V202-000330	2	BOLT	
16		159010-12530	1	PLUG, SPARK (BPMR-6A)	



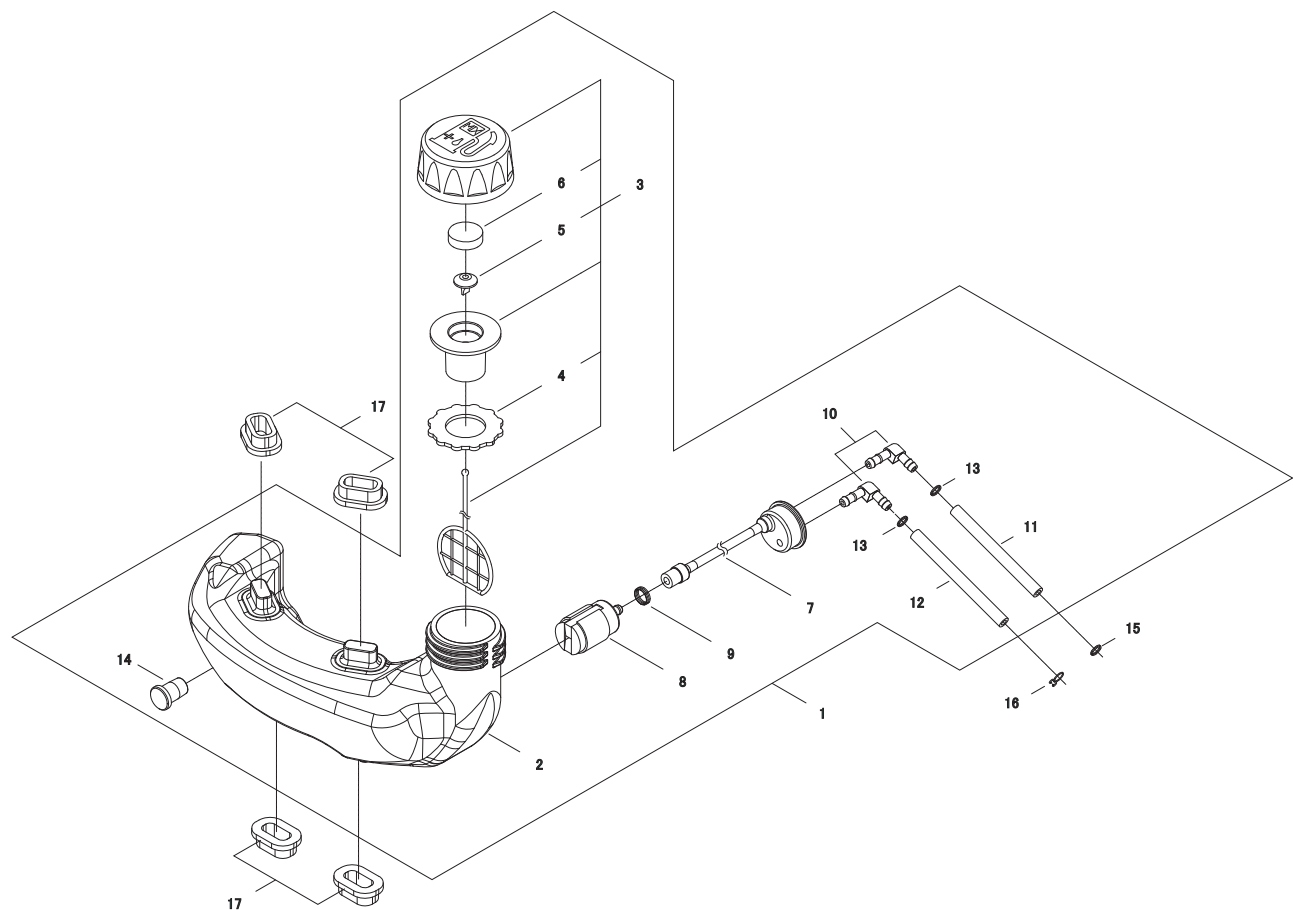
KEY	LV	PART NUMBER	Q'TY	DESCRIPTION	REMARKS
1		A021-003460	1	CARBURETOR, DIAPHRAGM	
2	+	P003-003970	1	BODY ASSEMBLY, PUMP	
3	++	123126-10631	1	SCREEN, INLET	
4	++	123137-19830	1	VALVE, INLET NEEDLE	
5	++	123122-05560	1	SPRING, METER. LEVER	
6	++	123139-05560	1	SCREW, M. LEVER PIN	
7	++	123138-03930	1	PIN, METERING LEVER	
8	++	123123-03930	1	LEVER, METERING	
9	+	P003-003980	1	BODY, AIR PURGE	
10	+	123142-05560	1	COVER, PRIMER PUMP	
11	+	123181-40630	1	PUMP, PRIMER	
12	+	P003-001850	1	DIAPHRAGM, METERING	
13	+	123140-05560	1	GASKET, M. DIAPHRAGM	
14	+	123112-40630	1	DIAPHRAGM, PUMP	
15	+	P003-000100	1	GASKET, PUMP	
16	+	123184-44430	1	JET #35	
17	+	123183-40630	1	O-RING	
18	+	P003-004740	1	VALVE, THROTTLE	
19	+	123114-44330	2	SCREW	
20	+	900720-00015	1	O-RING 15	
21	+	123110-05560	4	SCREW, PUMP COVER	
22	+	123172-45130	1	SWIVEL	
23	+	123173-07930	1	CLIP	
24		V103-001160	1	GASKET, INTAKE	



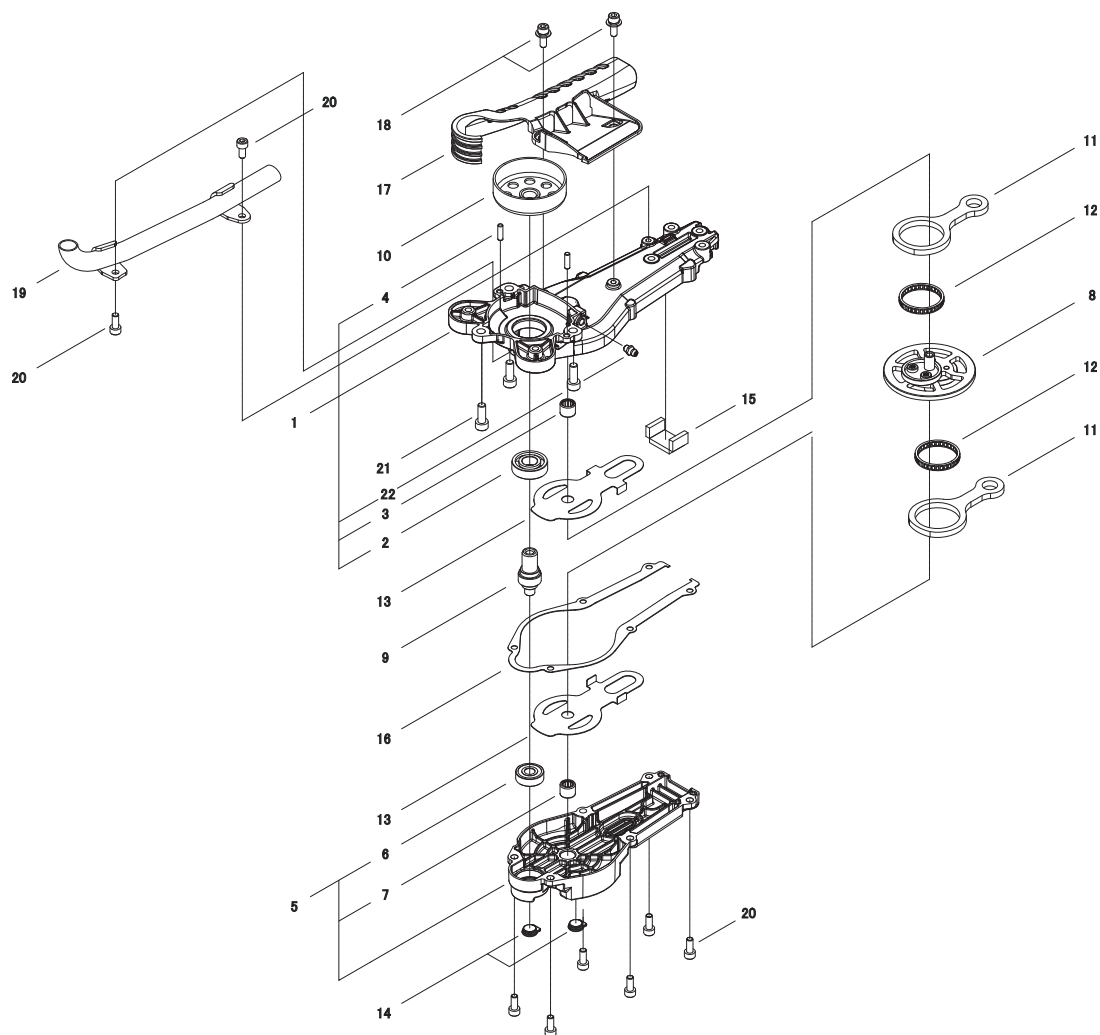
KEY	LV	PART NUMBER	Q'TY	DESCRIPTION	REMARKS
25		V152-002320	1	PLATE,ANGLE	
26		V495-001370	1	BAND	
27		V490-000440	1	CLIP	



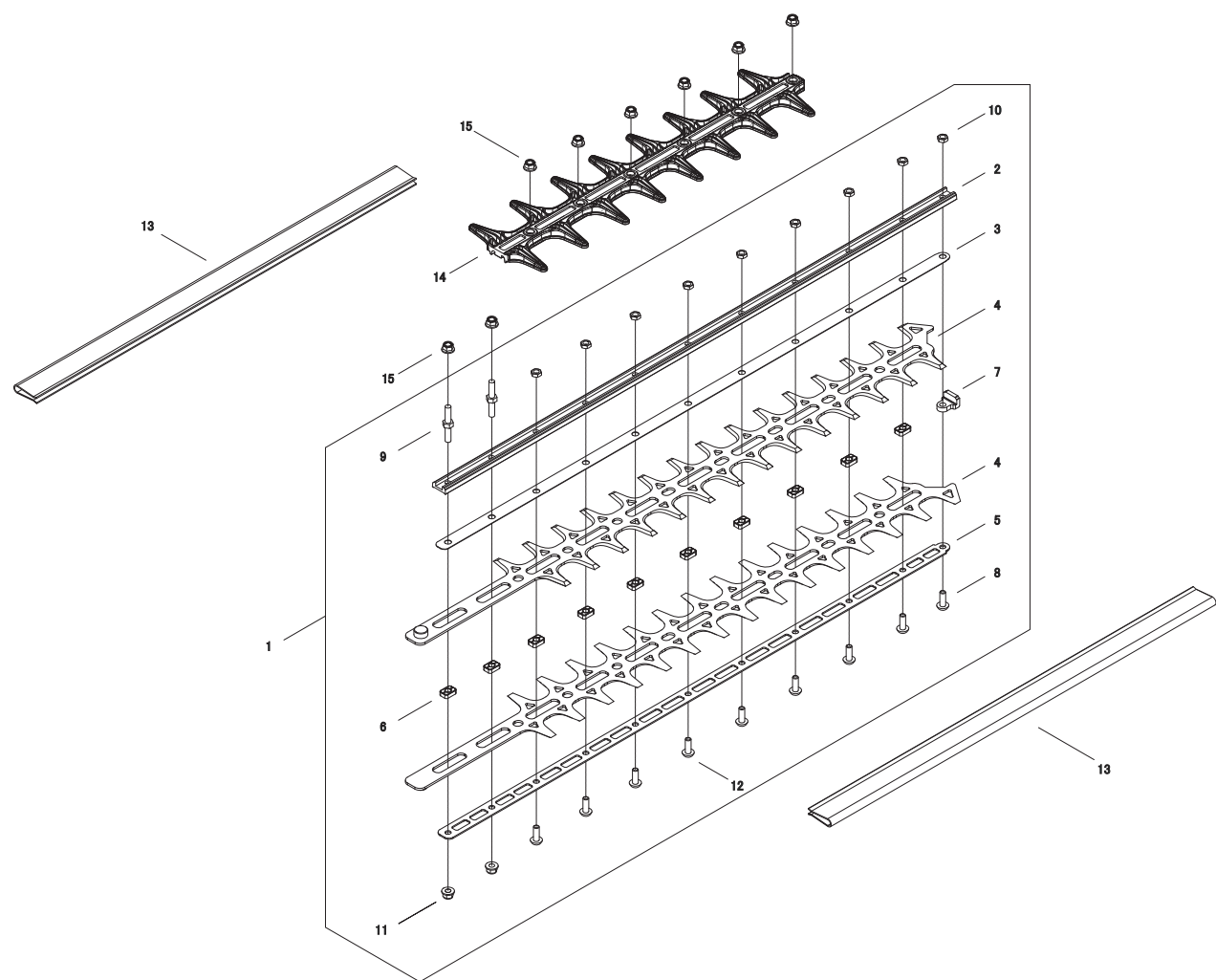
KEY	LV	PART NUMBER	Q'TY	DESCRIPTION	REMARKS
1		A023-000320	1	CASE,CLEANER	
2	+	A243-000190	1	SHUTTER,CHOKE	
3	+	A242-000170	1	CHOKE LEVER	
4	+	V346-000050	1	WASHER,WAVE	
5		A226-000710	1	FILTER	
6		A226-000720	1	ELEMENT,AIR FILTER	
7		P021-034220	1	CLEANER COVER	
8	+	A232-000920	1	CLEANER COVER	
9	+	V299-000400	1	KNOB	
10		91579-05070	2	SCREW	
11		X505-003350	1	LABEL,CAUTION	



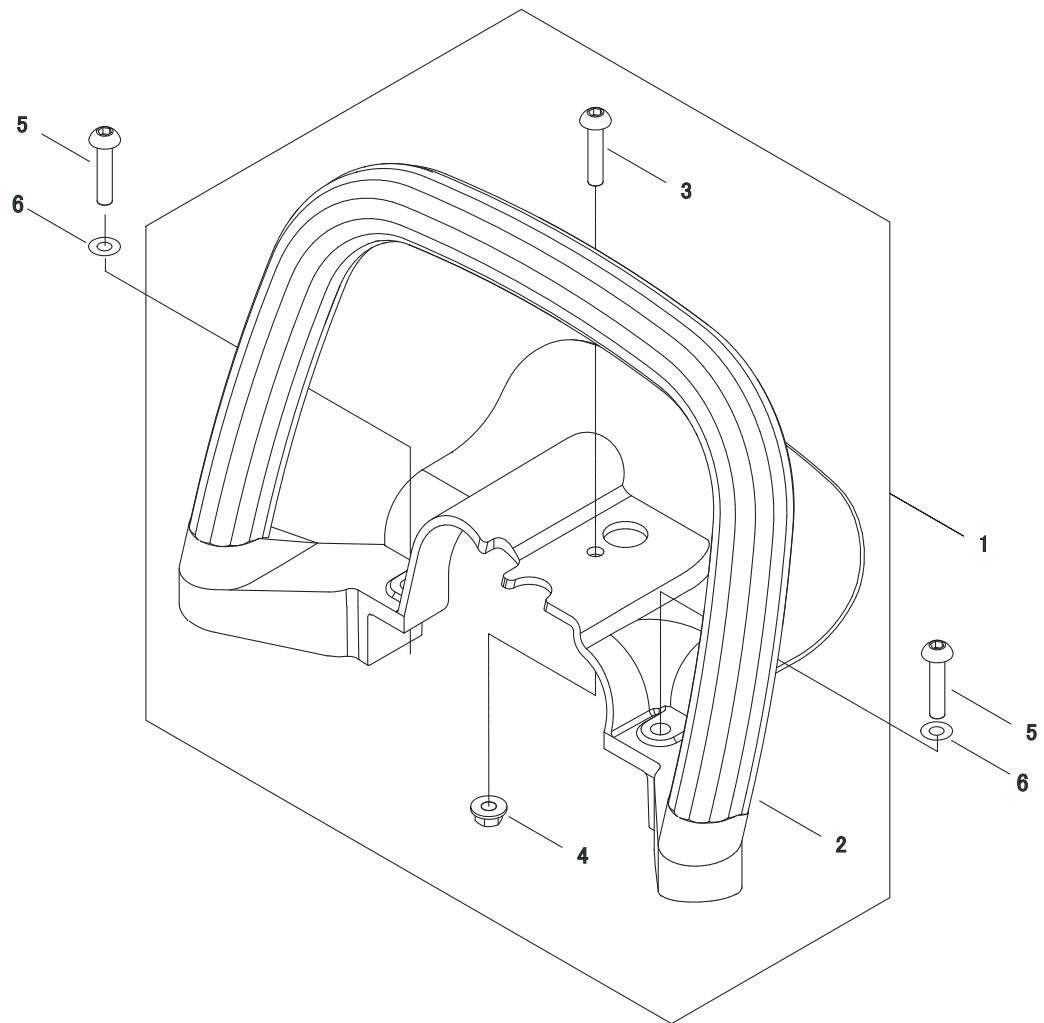
KEY	LV	PART NUMBER	Q'TY	DESCRIPTION	REMARKS
1		A038-000340	1	FUEL TANK ASSY	
2	+	A350-001470	1	TANK,FUEL	
3	+	A033-000120	1	FUEL CAP ASSY	
4	++	V107-000050	1	GASKET	
5	++	E263-000040	1	VALVE,CHECK	
6	++	V540-000280	1	SEAL,CIRCULAR	
7	+	V470-001200	1	PIPE	
8	+	131205-19831	1	STRAINER, FUEL	
9	+	V490-000610	1	CLIP	
10	+	V186-000270	2	JOINT,PIPE	
11	+	V471-002750	1	PIPE	
12	+	V471-002740	1	PIPE	
13	+	V490-000500	2	CLIP	
14	+	V145-000200	1	GROMMET	
15		V490-000500	1	CLIP	
16		V490-000510	1	CLIP	
17		V420-002220	4	TANK CUSHION	



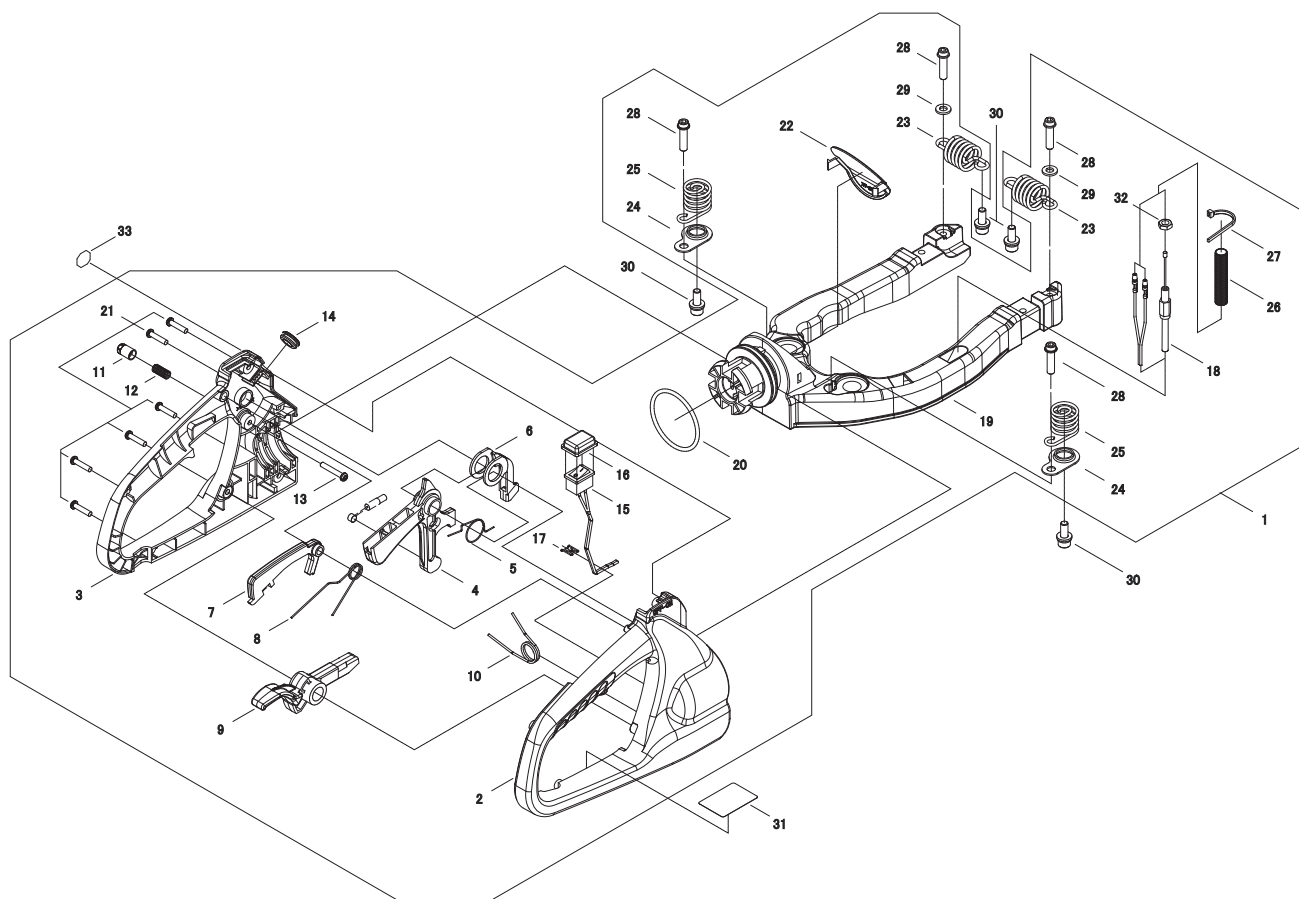
KEY	LV	PART NUMBER	Q'TY	DESCRIPTION	REMARKS
1		P021-034232	1	GEAR CASE COMP	
2	+	900802-06001	1	BEARING, BALL 6001	
3	+	V553-000110	1	BEARING, NEEDLE	
4	+	V622-000050	2	ROLLER	
22	+	V187-000080	1	GREASE NIPPLE	
5		P021-034240	1	CASE COVER COMP	
6	+	900804-00608	1	BEARING, BALL 608	
7	+	V553-000110	1	BEARING, NEEDLE	
8		V060-000071	1	GEAR, SPUR	
9		V655-000040	1	SHAFT, PINION	
10		A556-000940	1	DRUM CLUCH	
11		C532-000200	2	ROD	
12		V572-000000	2	BEARING, NEEDLE	
13		C603-000260	2	PLATE, SIDE	
14		V162-000390	2	PLUG	
15		V541-000200	1	SEAL	
16		V110-000110	1	GASKET, GEAR CASE	
17		A314-000010	1	COVER	
18		V203-001140	2	BOLT, 5	
19		A313-001360	1	EXHAUST PIPE	
20		900105-05012	8	BOLT, H.S. 5*12	
21		V204-000490	3	BOLT, 6	



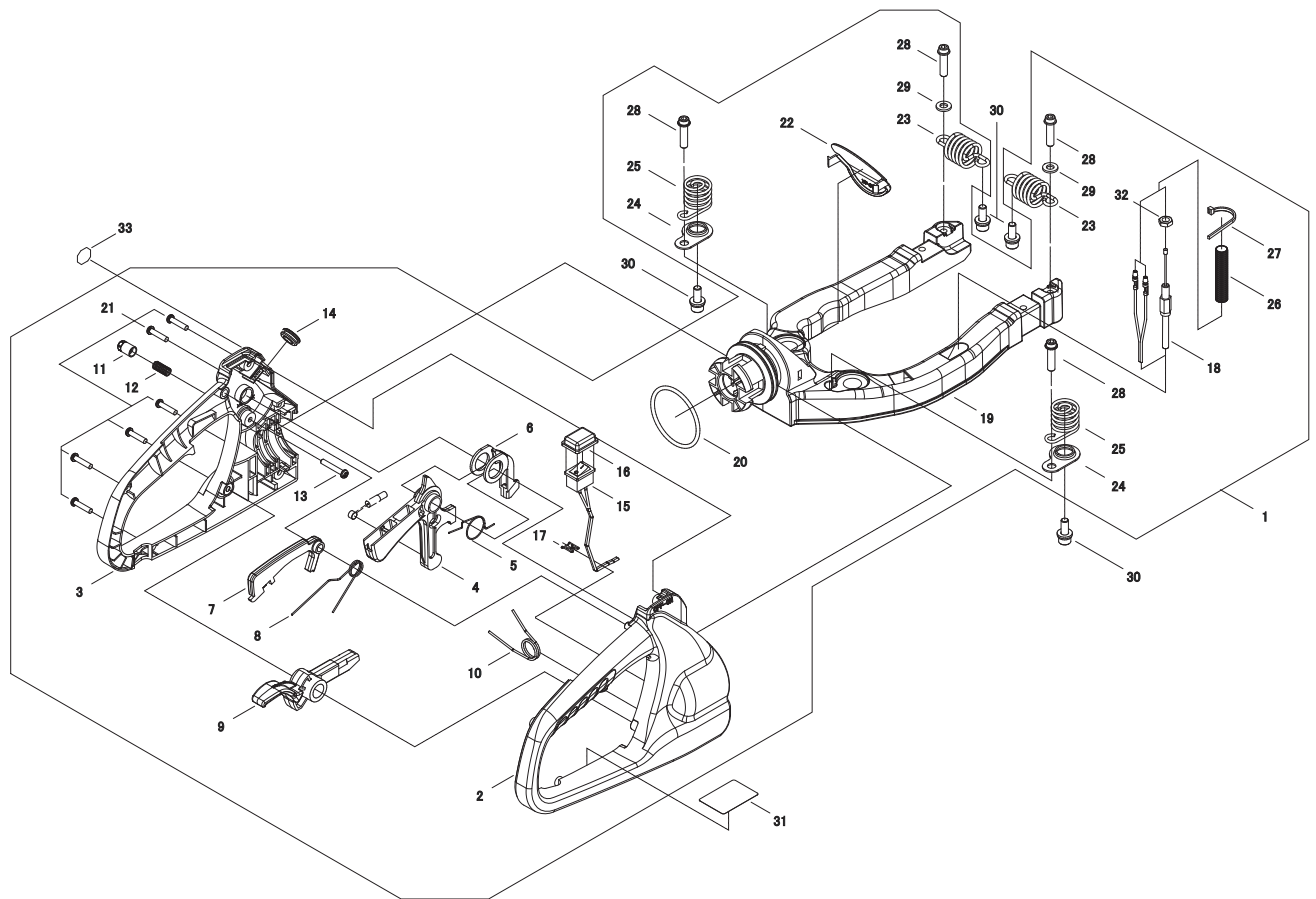
KEY	LV	PART NUMBER	Q'TY	DESCRIPTION	REMARKS
1		X041-000390	1	CUTTER,ASM	
2	+	X425-000570	1	SUPPORT,CUTTER	
3	+	X425-000580	1	SUPPORT,CUTTER	
4	+	X411-000860	2	BLADE	
5	+	X425-000590	1	LOWER PLATE	
6	+	V376-001370	10	SPACER	
7	+	V376-001380	1	BLOCK	
8	+	V203-001070	3	BOLT,5	
9	+	V223-000020	2	BOLT	
10	+	92022-05000	9	NUT	
11	+	V263-000250	2	NUT	
12	+	V203-001080	6	SCREW	
13		X495-000330	2	BLADE COVER	
14		X431-000100	1	BLUNT	
15		V263-000250	8	NUT	



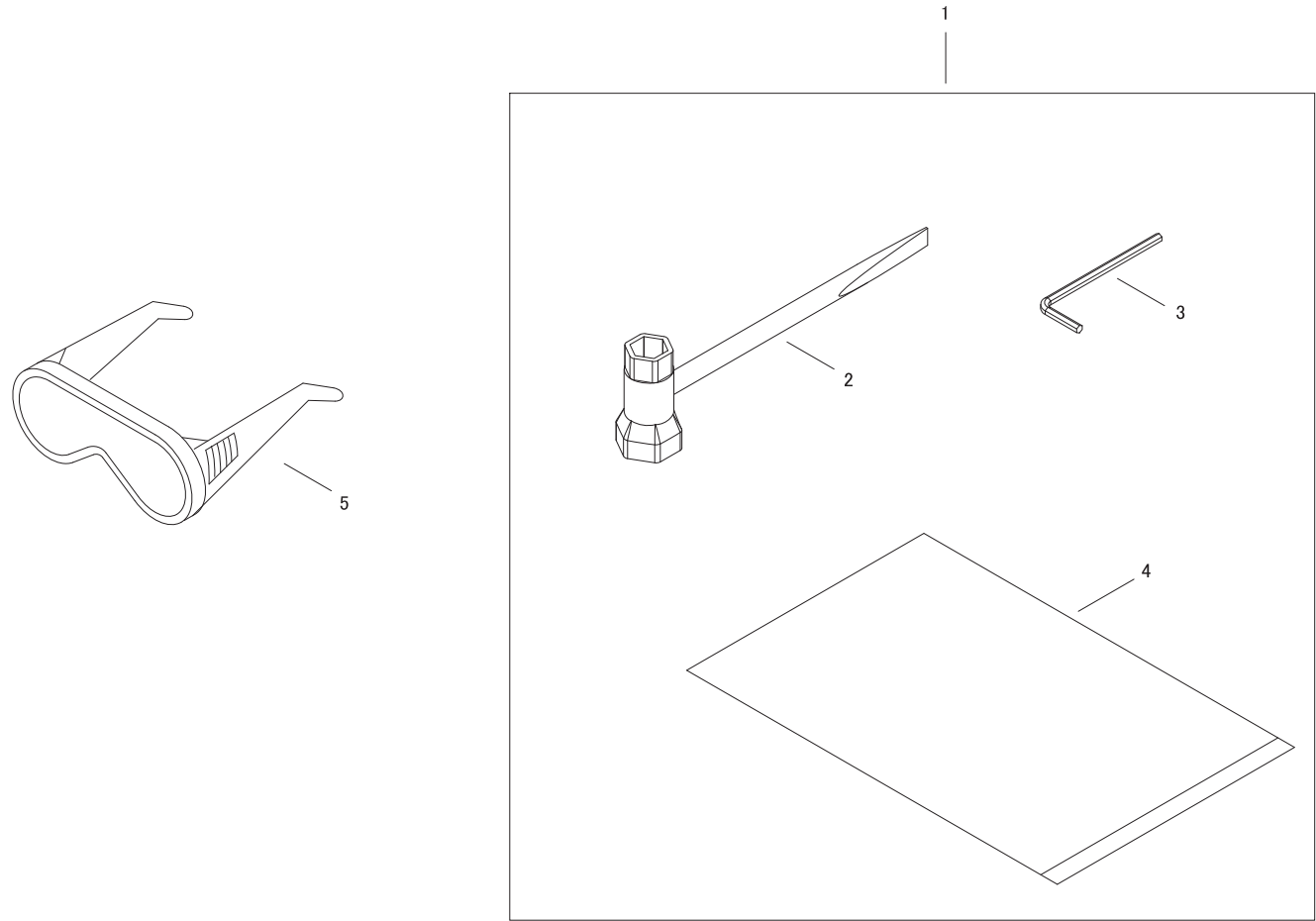
KEY	LV	PART NUMBER	Q'TY	DESCRIPTION	REMARKS
1		C040-000410	1	FRONT HANDLE ASSY	
2	+	C400-000870	1	FRONT HANDLE	
3	+	V203-001050	1	SCREW BUTTON	
4	+	V263-000330	1	FLANGE NUT	
5		V806-000080	2	BOLT, TORX 6	
6		92223-06000	2	WASHER	



KEY	LV	PART NUMBER	Q'TY	DESCRIPTION	REMARKS
1		C041-000031	1	HANDLE,ASM REAR	
2	+	C410-000660	1	HANDLE RIGHT	
3	+	C410-000670	1	HANDLE LEFT	
4	+	C450-000560	1	THROTTLE LEVER	
5	+	V452-000650	1	COIL SPRING	
6	+	C453-000370	1	SUB LEVER	
7	+	C460-000220	1	LOCK LEVER	
8	+	V452-000660	1	THROTTLE SPRING	
9	+	C661-000060	1	LOCK LEVER	
10	+	V452-000670	1	LOCK SPRING	
11	+	C463-000060	1	KNOB	
12	+	V450-000980	1	COIL SPRING	
13	+	V252-000320	1	SCREW TAPTITE	
14	+	V162-000400	1	GROMMET	
15	+	A440-001510	1	SWITCH	
16	+	A447-000060	1	SWITCH COVER	
17	+	V490-000670	1	CLIP	
18	+	V430-003120	1	THROTTLE CABLE	
19	+	C600-001190	1	HANDLE STAY	
20	+	92501-05000	1	O-RING	
21	+	V252-000330	6	SCREW TAPPING	
22	+	C411-000110	1	CAP	
23	+	V450-000990	2	COIL SPRING	
24	+	V456-000150	2	PLATE	



KEY	LV	PART NUMBER	Q'TY	DESCRIPTION	REMARKS
25	+	V450-001000	2	SPRING	
26	+	V475-005080	1	TUBE	
27	+	V495-002400	1	BAND	
28	+	V806-000000	4	BOLT, TORX 6	
29	+	92223-06000	2	WASHER	
32	+	900502-00006	1	NUT 6 (3N)	
30		V204-000500	4	BOLT SPW	
31		X505-003370	1	LABEL INST	
33		890157-39130	1	LABEL, SWITCH	



KEY	LV	PART NUMBER	Q'TY	DESCRIPTION	REMARKS
1		P021-034250	1	TOOL	
2	+	X602-000120	1	TOOL,WRENCH	
3	+	X605-000100	1	TOOL,L WRENCH	
4	+	X705-000100	1	BAG,PACKING	
5		X690-000030	1	GOGGLE	

Index					
Parts Number	Key No.	Parts Number	Key No.	Parts Number	Key No.
123110-05560	7 - 21	A243-000190	8 - 2	P021-034232	10 - 1
123112-40630	7 - 14	A300-000870	2 - 1	P021-034240	10 - 5
123114-44330	7 - 19	A313-001360	10 - 19	P021-034250	14 - 1
123122-05560	7 - 5	A314-000010	10 - 17	V060-000071	10 - 8
123123-03930	7 - 8	A350-001470	9 - 2	V100-000350	1 - 2
123126-10631	7 - 3	A409-000690	6 - 1	V103-001150	1 - 6
123137-19830	7 - 4	A409-000700	6 - 2	V103-001160	7 - 24
123138-03930	7 - 7	A411-000840	6 - 7	V104-001440	2 - 2
123139-05560	7 - 6	A426-000010	6 - 10	V107-000050	9 - 4
123140-05560	7 - 13	A427-000013	6 - 11	V110-000110	10 - 16
123142-05560	7 - 10	A429-000090	6 - 12	V136-000060	3 - 22
123172-45130	7 - 22	A440-001510	13 - 15	V145-000200	9 - 14
123173-07930	7 - 23	A447-000060	13 - 16	V152-002320	7 - 25
123181-40630	7 - 11	A500-001000	3 - 10	V162-000390	10 - 14
123183-40630	7 - 17	A504-000100	3 - 14	V162-000400	13 - 14
123184-44430	7 - 16	A506-000320	3 - 11	V186-000270	9 - 10
131205-19831	9 - 8	A509-000110	3 - 16	V187-000080	10 - 22
159010-12530	6 - 16	A511-000140	3 - 17	V202-000330	6 - 15
890157-39130	13 - 33	A514-000090	6 - 3	V203-000580	1 - 7
900105-05012	10 - 20	A522-000040	3 - 18	V203-001020	3 - 20
900105-05020	1 - 3	A552-000140	5 - 3	V203-001020	3 - 23
900105-05025	3 - 8	A555-000140	5 - 2	V203-001050	12 - 3
900105-05045	2 - 3	A556-000940	10 - 10	V203-001070	11 - 8
900502-00006	13 - 32	A566-000190	5 - 4	V203-001080	11 - 12
900600-00005	2 - 4	C040-000410	12 - 1	V203-001140	10 - 18
900720-00015	7 - 20	C041-000031	13 - 1	V204-000490	10 - 21
900802-06001	10 - 2	C400-000870	12 - 2	V204-000500	13 - 30
900804-00608	10 - 6	C410-000660	13 - 2	V223-000020	11 - 9
91579-05070	8 - 10	C410-000670	13 - 3	V252-000320	13 - 13
92022-05000	11 - 10	C411-000110	13 - 22	V252-000330	13 - 21
92223-06000	12 - 6	C450-000560	13 - 4	V253-000310	3 - 15
92223-06000	13 - 29	C453-000370	13 - 6	V263-000250	11 - 11
92501-05000	13 - 20	C460-000220	13 - 7	V263-000250	11 - 15
A011-000600	4 - 7	C463-000060	13 - 11	V263-000260	1 - 5
A021-003460	7 - 1	C532-000200	10 - 11	V263-000330	12 - 4
A023-000320	8 - 1	C533-000140	3 - 12	V265-000150	6 - 6
A033-000120	9 - 3	C600-001190	13 - 19	V299-000400	8 - 9
A038-000340	9 - 1	C603-000260	10 - 13	V306-000250	4 - 6
A051-001820	3 - 9	C661-000060	13 - 9	V346-000050	8 - 4
A056-000250	5 - 1	E263-000040	9 - 5	V352-000100	6 - 14
A100-000900	4 - 1	P003-000100	7 - 15	V376-001370	11 - 6
A101-000230	4 - 2	P003-001850	7 - 12	V376-001380	11 - 7
A130-001141	1 - 1	P003-003970	7 - 2	V420-002220	9 - 17
A160-001771	3 - 19	P003-003980	7 - 9	V430-003120	13 - 18
A200-000760	1 - 4	P003-004740	7 - 18	V450-000980	13 - 12
A226-000710	8 - 5	P021-033830	3 - 4	V450-000990	13 - 23
A226-000720	8 - 6	P021-034200	3 - 1	V450-001000	13 - 25
A232-000920	8 - 8	P021-034210	4 - 8	V452-000630	6 - 4
A242-000170	8 - 3	P021-034220	8 - 7	V452-000640	3 - 13

Index					
Parts Number	Key No.	Parts Number	Key No.	Parts Number	Key No.
V452-000650	13 - 5				
V452-000660	13 - 8				
V452-000670	13 - 10				
V456-000150	13 - 24				
V470-001200	9 - 7				
V471-002740	9 - 12				
V471-002750	9 - 11				
V475-005070	6 - 13				
V475-005080	13 - 26				
V485-002270	6 - 8				
V485-002280	6 - 9				
V490-000440	7 - 27				
V490-000500	9 - 13				
V490-000500	9 - 15				
V490-000510	9 - 16				
V490-000610	9 - 9				
V490-000670	13 - 17				
V495-001370	7 - 26				
V495-002400	13 - 27				
V503-000010	3 - 3				
V503-000010	3 - 6				
V540-000280	9 - 6				
V541-000200	10 - 15				
V553-000090	4 - 5				
V553-000110	10 - 3				
V553-000110	10 - 7				
V572-000000	10 - 12				
V580-000070	4 - 4				
V583-000140	6 - 5				
V592-000300	3 - 2				
V592-000300	3 - 5				
V606-000040	4 - 3				
V622-000040	3 - 7				
V622-000050	10 - 4				
V655-000040	10 - 9				
V806-000000	13 - 28				
V806-000080	12 - 5				
X041-000390	11 - 1				
X411-000860	11 - 4				
X425-000570	11 - 2				
X425-000580	11 - 3				
X425-000590	11 - 5				
X431-000100	11 - 14				
X495-000330	11 - 13				
X504-006440	3 - 21				
X505-003350	8 - 11				
X505-003370	13 - 31				
X602-000120	14 - 2				
X605-000100	14 - 3				
X690-000030	14 - 5				

# **YAMABIKO CORPORATION**

7-2 SUEHIROCHO 1-CHOME, OHME, TOKYO 198-8760, JAPAN  
PHONE: 81-428-32-6118. FAX: 81-428-32-6145.

**shindaiwa<sup>®</sup>**