

shindaiwa

PARTS PRICE LIST

DH230

Shindaiwa Corporation

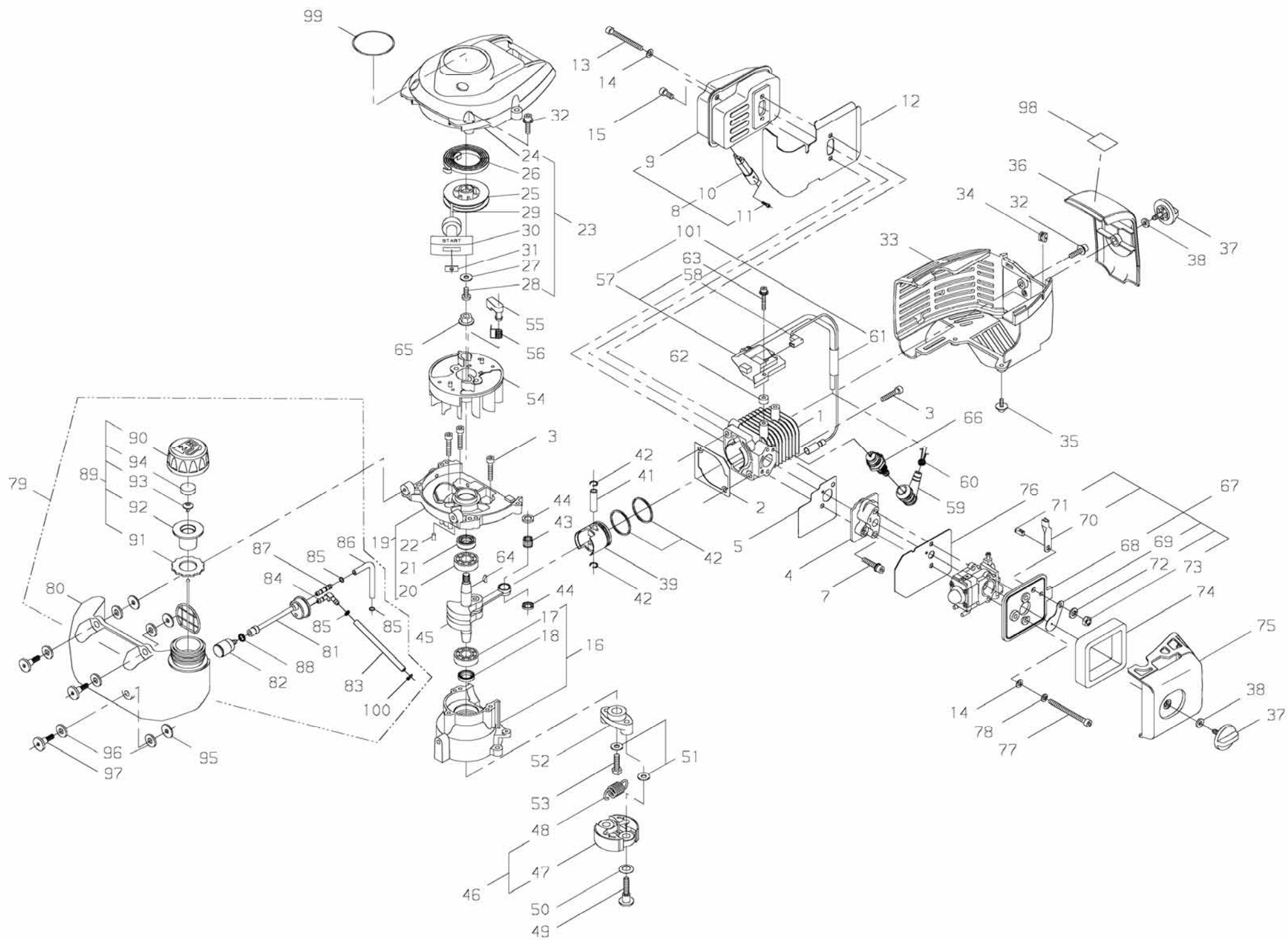
6-2-11,Ozuka-Nishi, Asaminami-ku, Hiroshima, 731-3167, Japan

Telephone (082) 849-2005 Fax (082) 849-2481

DH230 / EC1 - 24

MAR . 2 , 2009

Printed in Japan



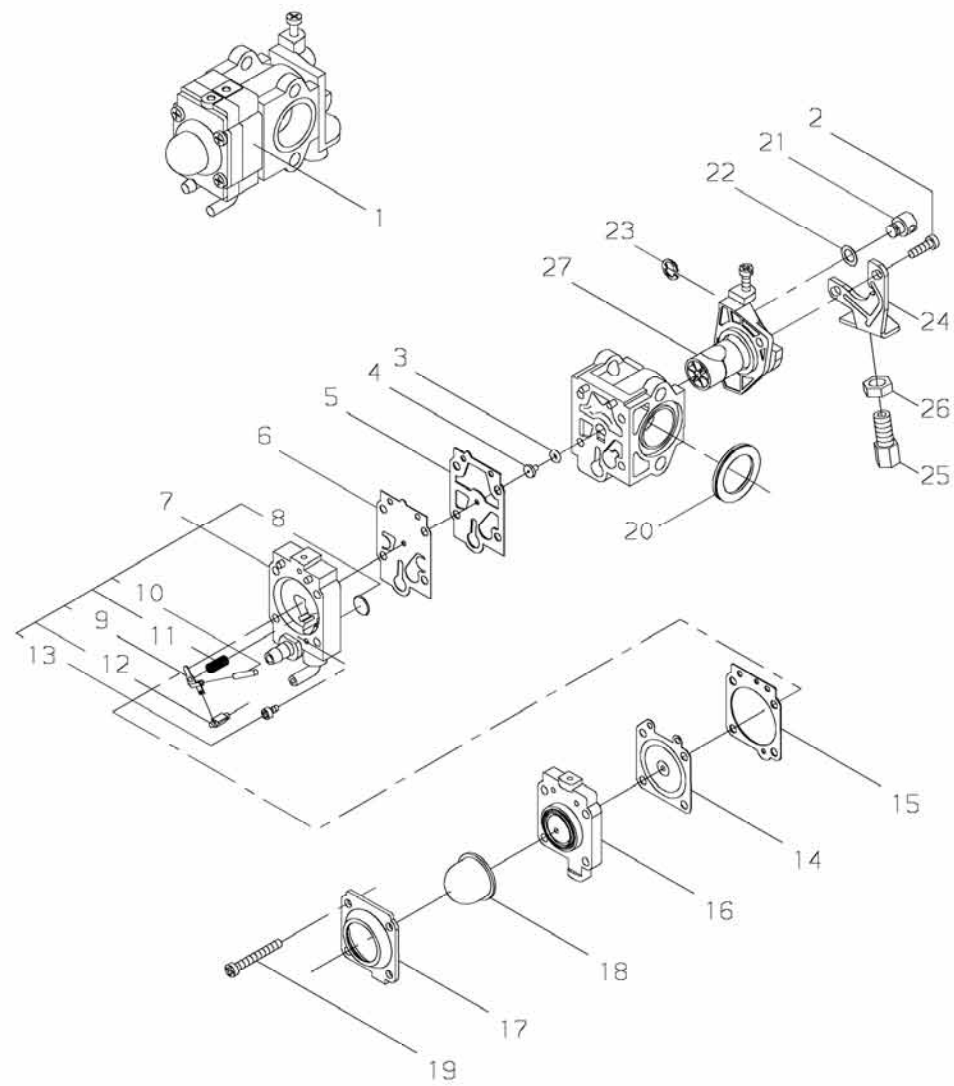
PRICE:(\$)

Ref. No.	Part No.	Part Name	Q`ty	Unit Price(\$)	Remarks
1-1	62809-12111	CYLINDER	1		
2	20870-12121	GASKET	1		
3	01020-05250	BOLT	5		M5×25
4	20016-12213	INSULATOR	1		
5	20870-12220	GASKET	1		
6					
7	11022-05300	BOLT-SPW	2		M5×30
8	70871-15100	MUFFLER SUBASSY	1		
9	70871-15110	*MUFFLER	1		
10	70871-15120	*SPARK ARRESTER	1		
11	01270-03062	*SCREW,TAPPING	1		φ3×6
12	20870-15122	GASKET	1		
13	01020-05500	BOLT	2		M5×50
14	01610-05080	WASHER	4		φ5
15	01020-05120	BOLT	1		M5×12
16	20870-21100	CRANKCASE,PTO COMP	1		
17	12900-60010	*BALL BEARING	1		6001
18	22150-21250	*OIL SEAL	1		
19	20870-21301	CRANKCASE,M COMP	1		
20	12900-60010	*BALL BEARING	1		6001
21	20000-21211	*OIL SEAL	1		
22	12492-40080	*ROLLER	2		
23	20870-31102	FAN COVER SUBASSY	1		
24	20870-31112	*FAN COVER	1		
25	70030-75120	*REEL	1		
26	70030-75130	*RECOIL SPRING	1		
27	70030-75140	*WASHER	1		
28	20035-75170	*SCREW	1		
29	70030-75160	*ROPE	1		
30	20010-75190	*STARTER KNOB	1		
31	20010-75210	*STOPPER	1		
32	11060-05202	BOLT,ADHESIVE	5		M5×20
33	20870-32111	CYLINDER COVER	1		
34	20011-72120	GROMMET	1		
35	11060-04163	BOLT,ADHESIVE	2		M4×16
36	20870-33111	COVER	1		
37	20870-33120	KNOB	2		
38	23627-21220	COLLAR	2		φ5

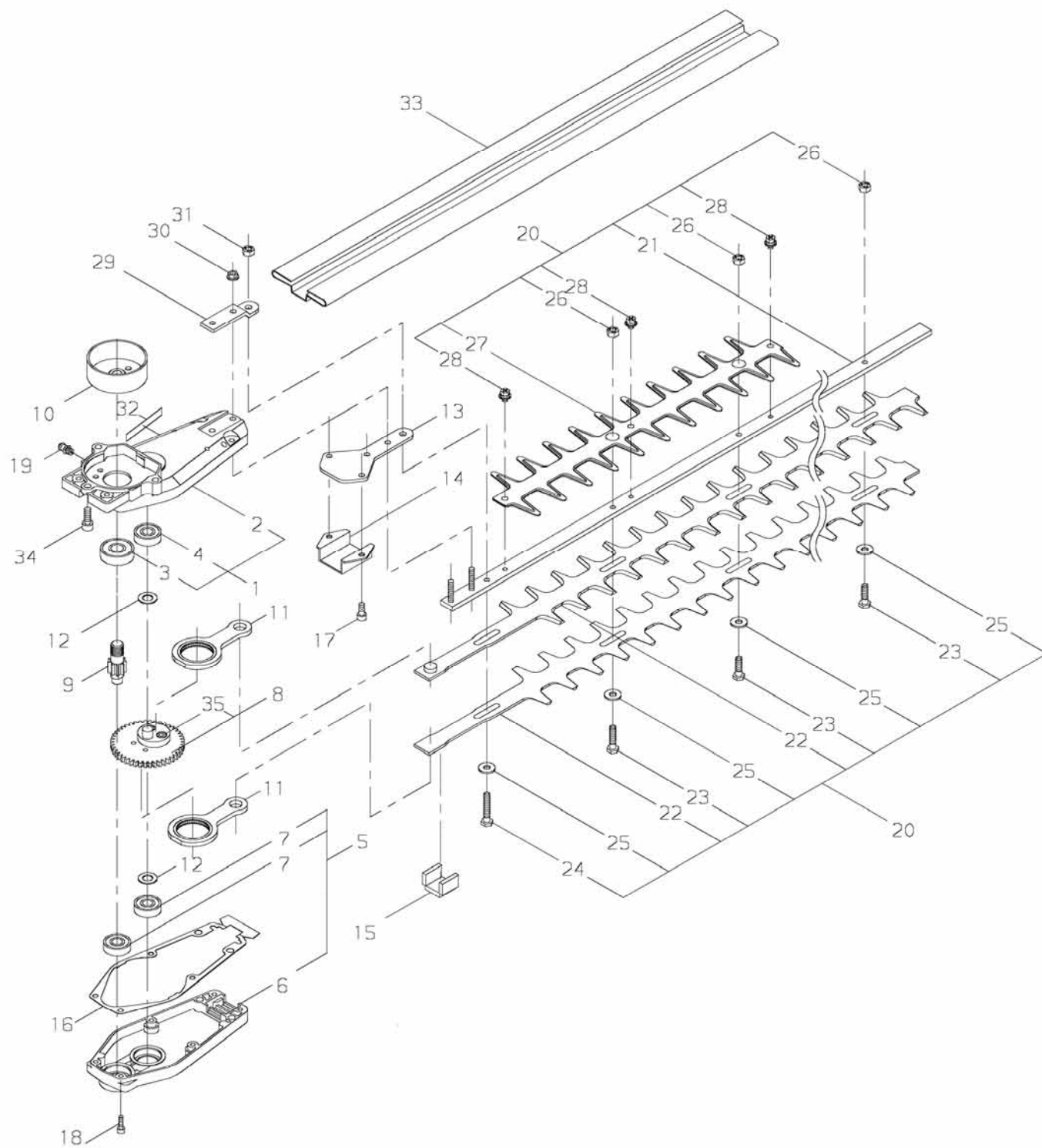
PRICE:(\$)

Ref. No.	Part No.	Part Name	Q`ty	Unit Price(\$)	Remarks
1-39	20075-41111	PISTON	1		
40	20000-41210	PISTON RING	2		
41	20075-41310	PISTON PIN	1		
42	70030-41320	SNAP RING	2		
43	37013-41230	NEEDLE BEARING	1		
44	37013-41240	THRUST WASHER	2		
45	20870-42101	CRANKSHAFT COMP	1		
46	70140-51012		1		
47	70140-51113	*CLUTCH SHOE	2		
48	37013-51310	*COIL SPRING	1		
49	20087-51210	BOLT	2		M6
50	20087-51231	SPRING PLATE	2		
51	22100-71430	WASHER	3		φ6
52	20870-51211	CLUTCH BOSS	1		
53	20870-51220	BOLT	1		M6×18
54	20870-71110	ROTOR	1		
55	20870-71120	RATCHET	1		
56	20870-71130	COIL SPRING	1		
57	20870-71202	*COIL ASSY	1		
58	20870-71222	**CORD	1		
59	22160-72220	PLUG CAP	1		
60	20000-72230	SPRING,PLUG	1		
61	20016-71651	*TUBE	1		φ8
62	70030-71620	INSULATOR	2		
63	11024-04261	BOLT-SLPW	2		M4×26
64	02403-03100	KEY	1		
65	20035-71220	NUT	1		M8
66	13000-13406	SPARK PLUG	1		BMR6A
67	20870-82100	CLEANER BODY SUBASSY	1		
68	20870-82111	*CLEANER BODY	1		
69	20115-82120	*CHOKE PLATE	1		
70	20870-82120	*CHOKE LEVER	1		
71	20110-82140	*CHOKE SHAFT	1		
72	01600-06151	*SPRING WASHER	1		
73	11524-06211	*U NUT	1		
74	20870-82210	FILTER	1		
75	20870-82312	CLEANER COVER	1		
76	20870-82411	GASKET	1		

PRICE:(\$)
[illegible]



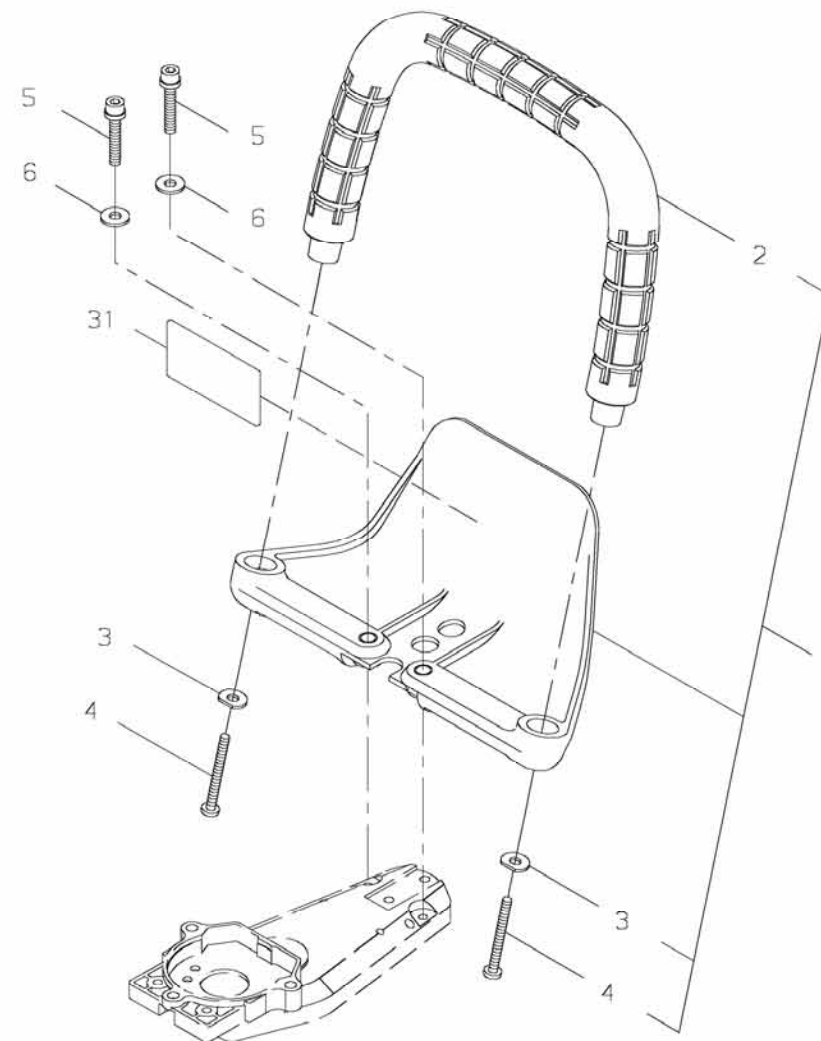
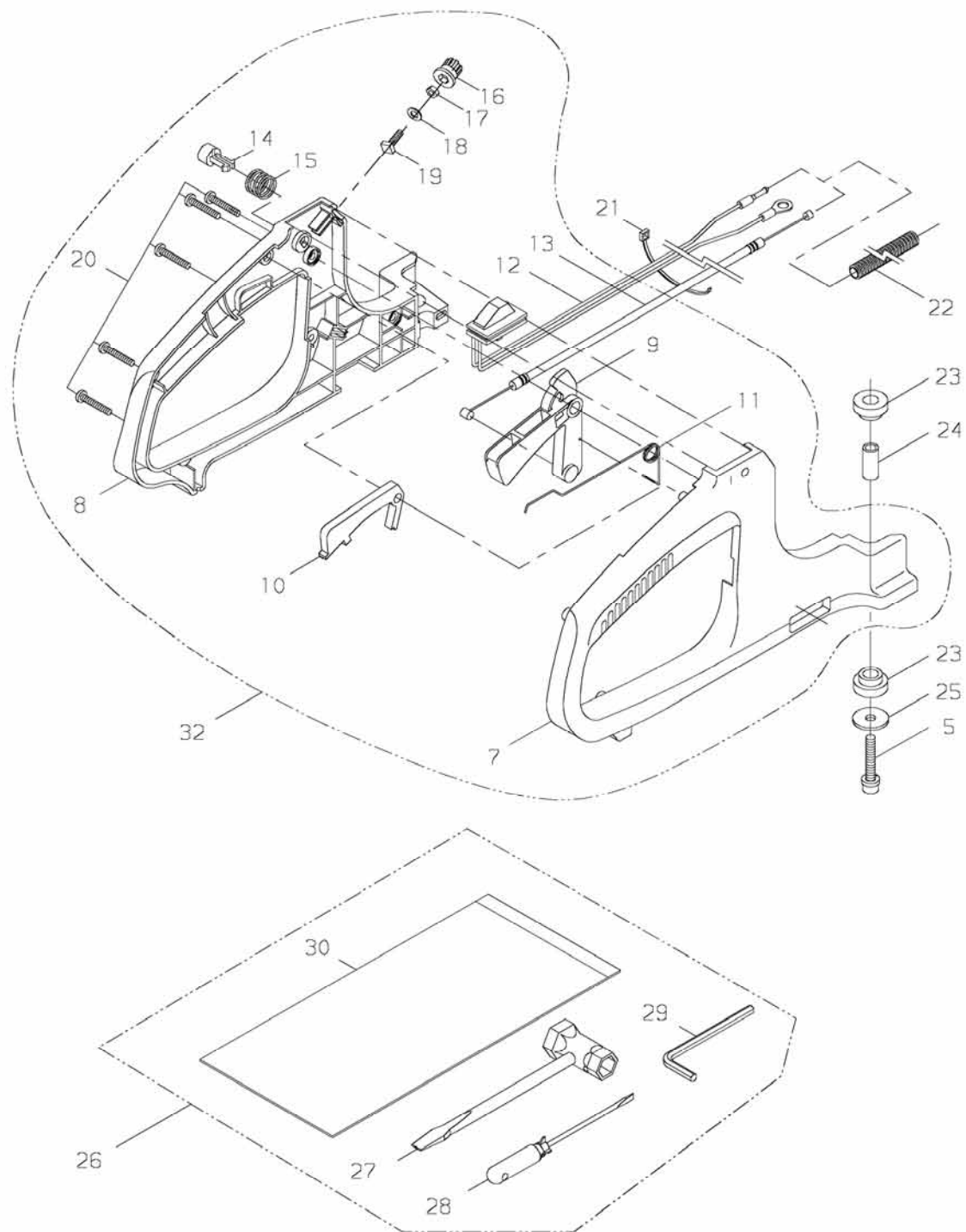
PRICE:(\$)
[illegible]



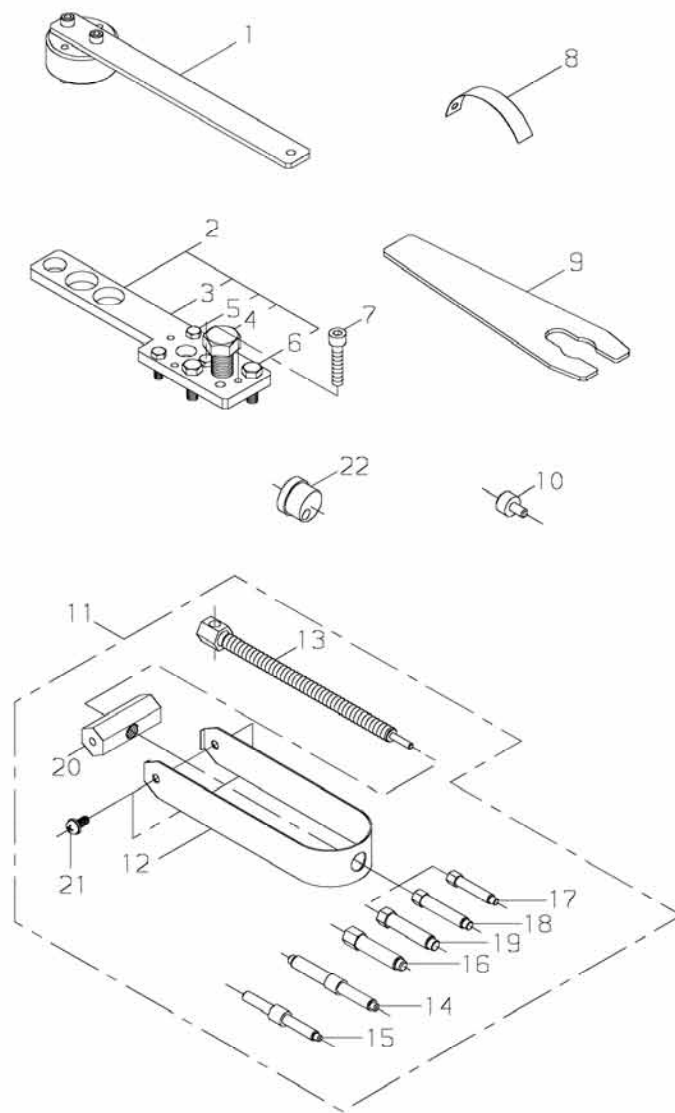
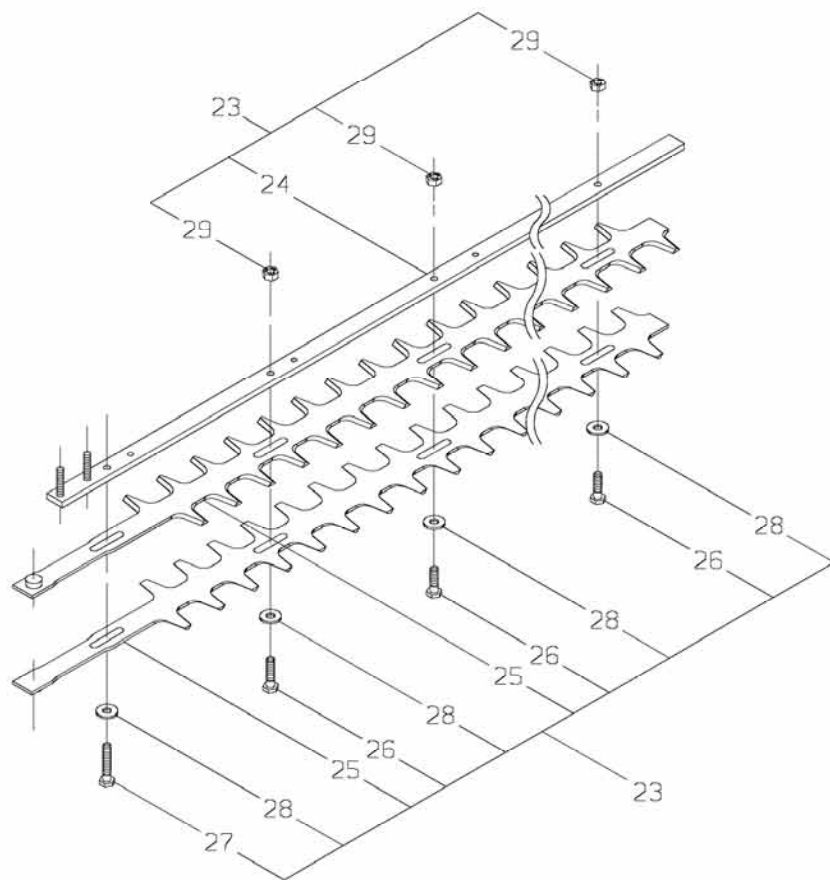
PRICE:(\$)

Ref. No.	Part No.	Part Name	Q`ty	Unit Price(\$)	Remarks
3-1	20870-61103	GEAR CASE COMP	1		
2	20870-61113	*GEAR CASE	1		
3	02006-06201	*BALL BEARING	1		6201DDU
4	02002-06000	*BALL BEARING	1		6000ZZ
5	20870-61203	CASE COVER COMP	1		
6	20870-61213	*CASE COVER	1		
7	02002-06000	*BALL BEARING	2		6000ZZ
8	20870-61301	GEAR COMP	1		
9	20870-61410	PINION SHAFT	1		
10	20870-61420	CLUTCH DRUM	1		
11	20870-61500	ROD COMP	2		
12	15401-11008	COLLAR	2		
13	20870-61611	PLATE	1		
14	20870-61621	PLATE	1		
15	20870-61630	PACKING	1		
16	20870-61650	GASKET, CASE	1		
17	01020-05120	BOLT	2		M5×12
18	01020-04140	BOLT	6		M4×14
19	20870-61640	GREASE NIPPLE	1		
20	63802-62011	CUTTER ASSY	1		CARB·EPA(24")
20	63803-62011	CUTTER ASSY	1		CARB·EPA(30")
20	63804-62011	CUTTER ASSY	1		CE·YB·EC(24")
21	63802-62311	*GUIDE BAR	1		24"(CARB,EPA)
21	63802-62310	*GUIDE BAR	1		24"(CE,YB,EC)
21	63803-62311	*GUIDE BAR	1		30"(CARB,EPA)
22	18500-60103	*BLADE	2		24"(CARB,EPA)
22	18500-60104	*BLADE	2		24"(CE,YB,EC)
22	18500-70102	*BLADE	2		30"(CARB,EPA)
23	20870-62110	*BOLT	3		M6 24"
23	20870-62110	*BOLT	5		M6 30"
24	20870-62150	*BOLT	1		M6
25	20870-62131	*WASHER	4		24"
25	20870-62131	*WASHER	6		30"
26	22011-97840	*LOCK NUT	3		M6 24"
26	22011-97840	*LOCK NUT	5		M6 30"
27	63804-62310	*PROTECTOR	1		
28	11060-05080	*BOLT,ADHESIVE	3		M5×8
29	20870-62210	HOLDER	1		

PRICE:(\$)
[illegible]



PRICE:(\$)
[illegible]



PRICE:(\$)

Ref. No.	Part No.	Part Name	Q`ty	Unit Price(\$)	Remarks
5-1	20870-98010	SPANNER	1		
2	20000-96104	PULLER ASSY	1		
3	20000-96114	*LEVER	1		
4	22100-96121	*CENTER BOLT	1		M16
5	20000-96130	*BOLT	3		
6	20000-96140	*BOLT	2		
7	01020-06350	BOLT	2		M6×35
8	20000-96210	AIR GAP GAUGE	1		
9	20000-96411	ROTOR SPANNER	1		
10	20021-96420	STOPPER	2		
11	20021-96601	PULLER ASSY	1		
12	20021-96611	*PULLER	1		
13	20021-96621	*BOLT	1		
14	20000-96631	*GUIDE PIN	1		
15	20035-96630	*GUIDE PIN	1		
16	20021-96630	*GUIDE PIN	1		
17	20021-96650	*PIN, ADAPTER	1		
18	20021-96660	*PIN, ADAPTER	1		
19	20021-96670	*PIN, ADAPTER	1		
20	20000-96640	*BOSS	1		
21	01211-06120	*SCREW-SW	2		
22	20870-98050	HOLDER	1		
23	60804-98010	CUTTER ASSY	1		24"
23	60805-98010	CUTTER ASSY	1		30"
24	63802-62311	*GUIDE BAR	1		24"
24	63803-62311	*GUIDE BAR	1		30"
25	18500-60104	*BLADE	2		24"
25	18500-70103	*BLADE	2		30"
26	20870-62110	*BOLT	3		M6×20, 24"
26	20870-62110	*BOLT	5		M6×20, 30"
27	20870-62150	*BOLT	1		M6×25
28	20870-62131	*WASHER	4		24"
28	20870-62131	*WASHER	6		30"
29	22011-97840	*LOCK NUT	3		M6, 24"
29	22011-97840	*LOCK NUT	5		M6, 30"