

# **shindaiwa**

## **PARTS PRICE LIST**

<b>DH2510T</b>
----------------

**Shindaiwa Corporation**

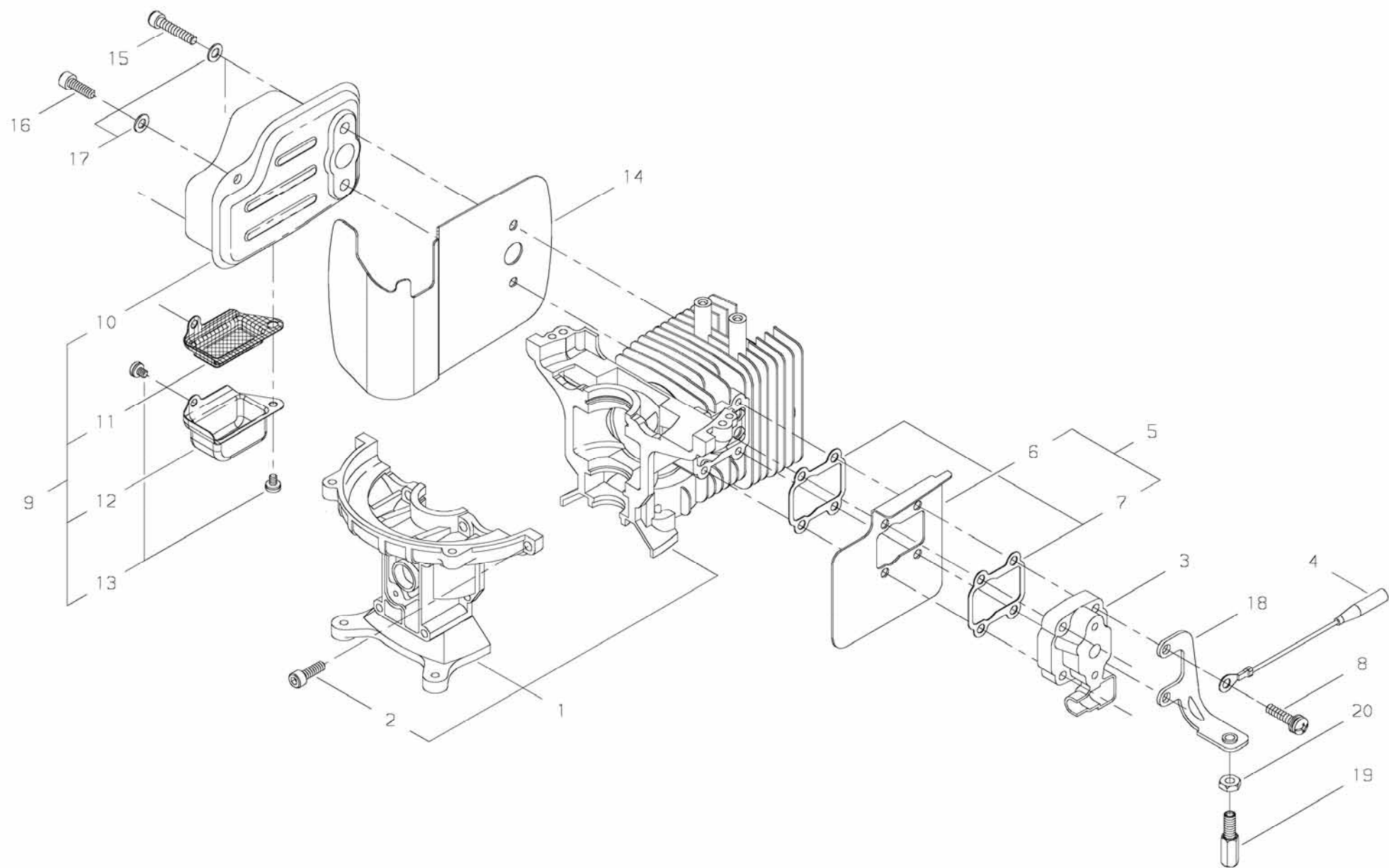
6-2-11, Ozuka-Nishi, Asaminami-ku, Hiroshima, 731-3167, Japan

Telephone (082) 849-2005 Fax (082) 849-2481

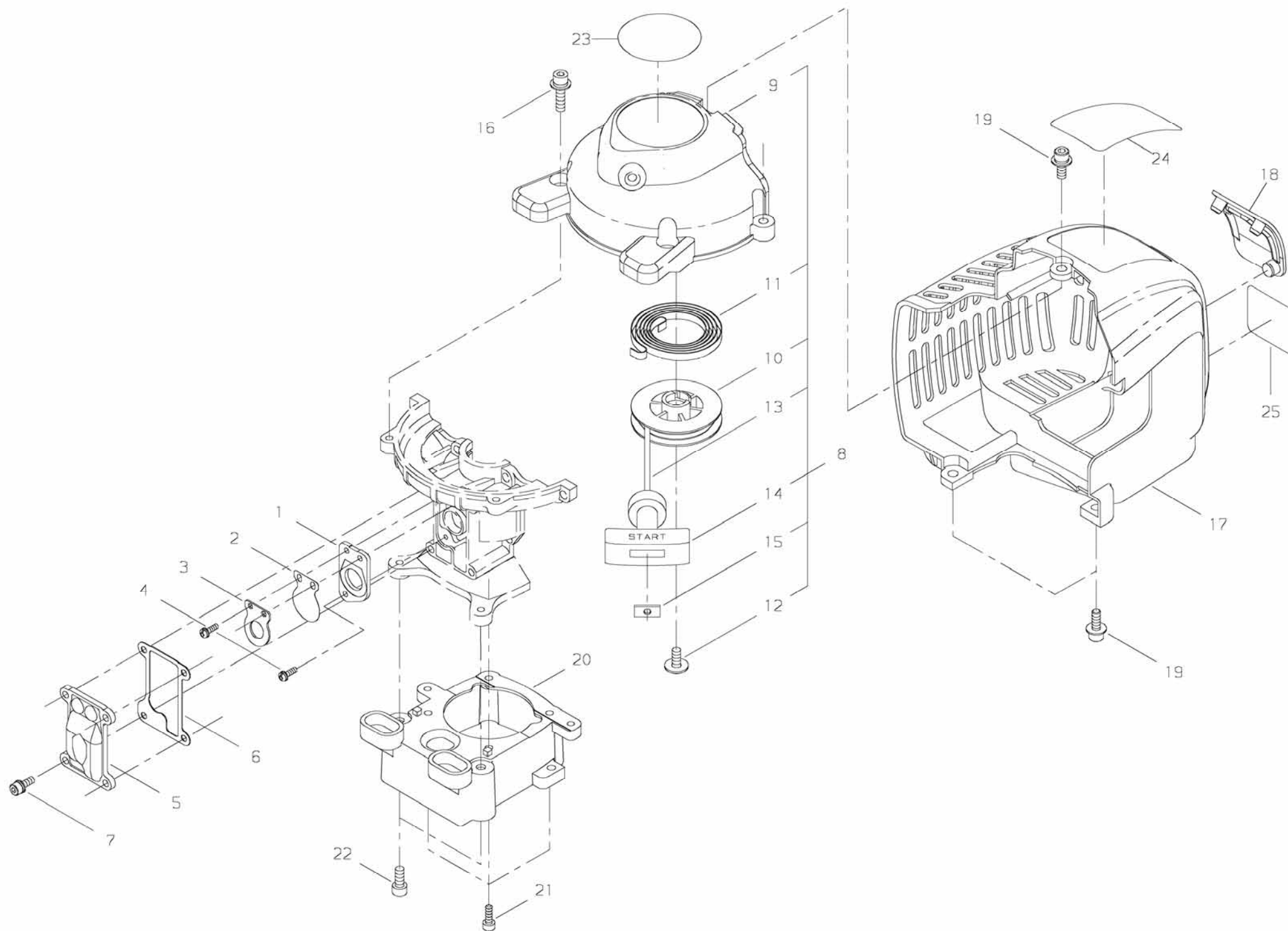
**DH2510T / EC2 - 3**

**MAR . 2 , 2009**

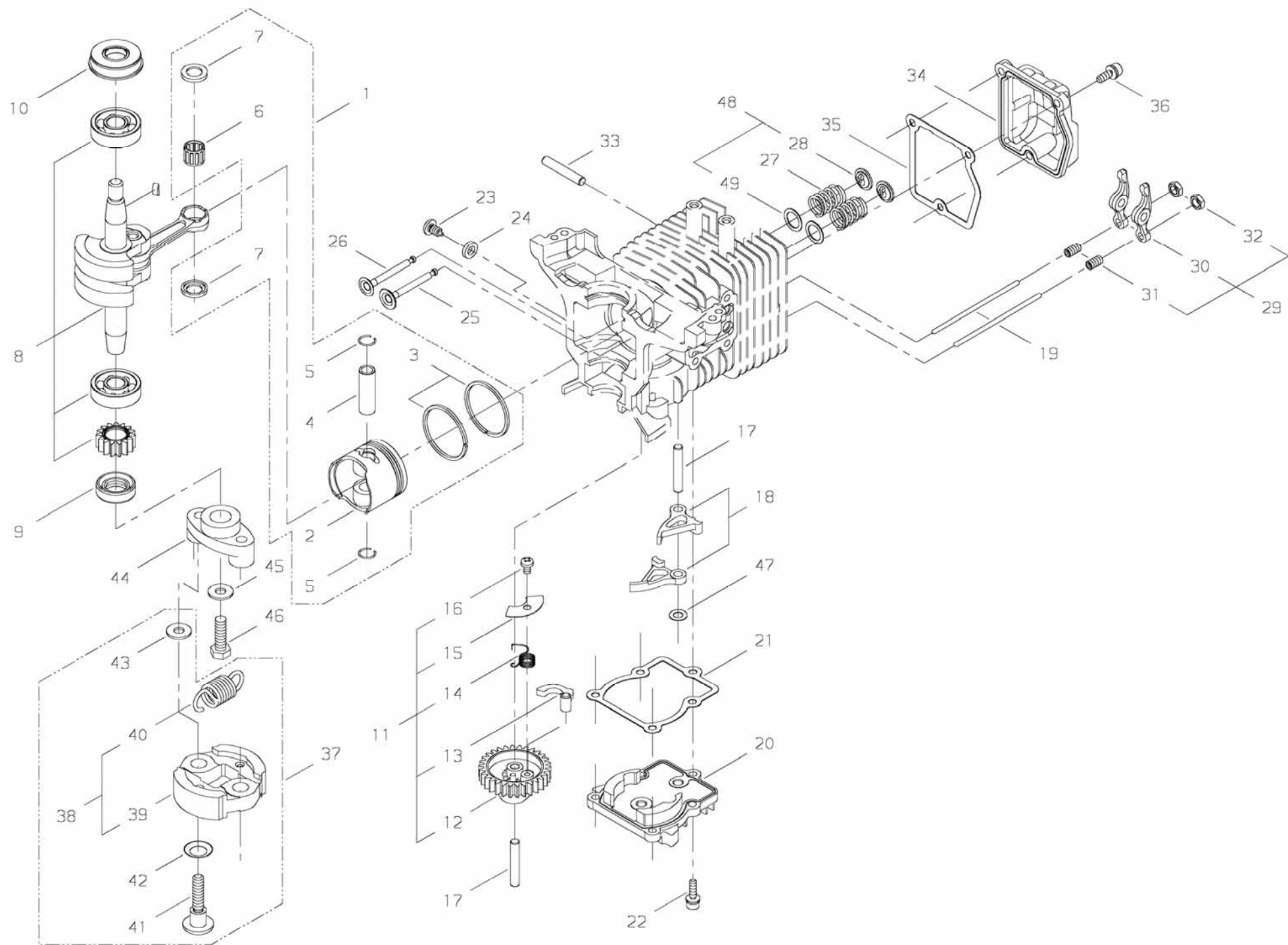
**Printed in Japan**



PRICE:(\$)  
[illegible]



PRICE:(\$)  
[illegible]

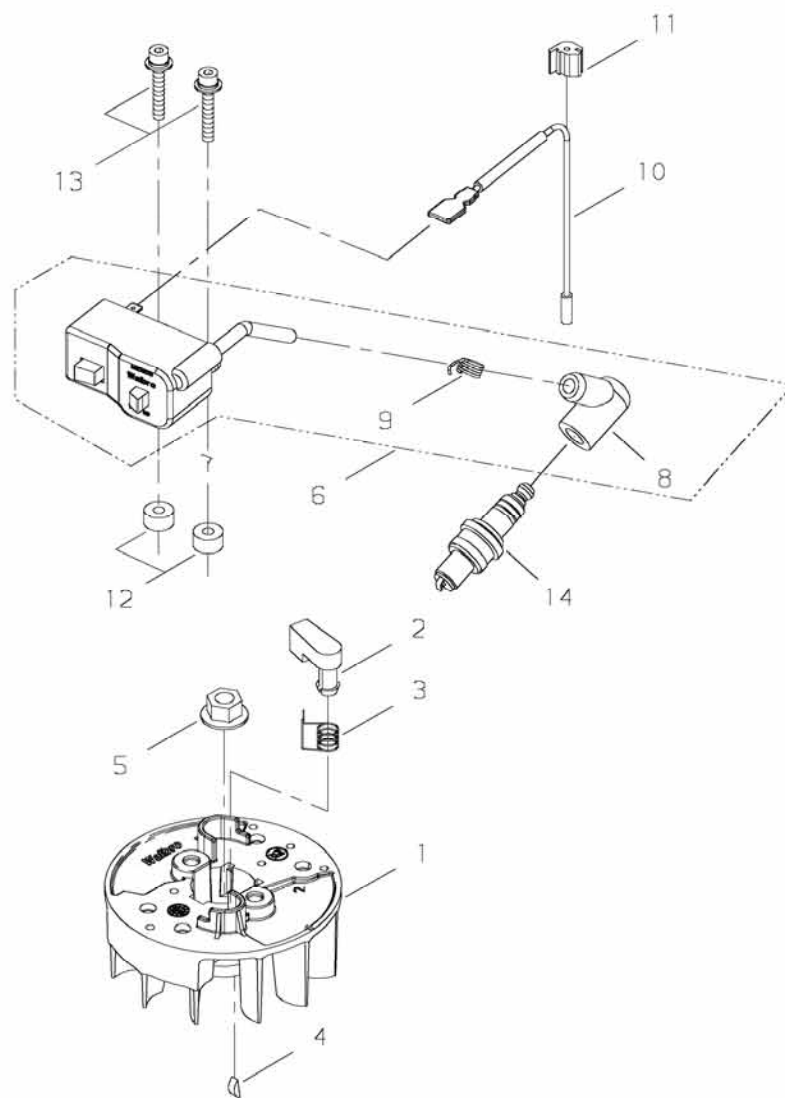


PRICE:(\$)

Ref. No.	Part No.	Part Name	Q`ty	Unit Price(\$)	Remarks
3-1	62902-41310	PISTON SET	1		
2	62902-41110	*PISTON	1		
3	62902-41120	*PISTON RING	2		
4	62901-41210	*PISTON PIN	1		
5	20000-41320	*SNAP RING	2		
6	62901-41230	*NEEDLE BEARING	1		
7	37019-41240	*THRUST WASHER	2		
8	62600-42020	CRANKSHAFT COMP	1		
9	62901-42260	OIL SEAL	1		
10	62901-42270	OIL SEAL	1		
11	62905-43011	CAM GEAR ASSY	1		
12	62902-43310	*CAM GEAR	1		
13	62907-43120	*WEIGHT	1		
14	17520-08900	*COIL SPRING	1		
15	62905-43131	*PLATE	1		
16	01280-04062	*SCREW,TAPPING	1		
17	12492-50290	ROLLER	2		φ5*L29.8
18	62907-43210	LIFTER	2		
19	62908-43220	PUSH ROD	2		
20	62901-43330	CAM GEAR COVER	1		
21	62901-43240	GASKET	1		
22	11022-04140	BOLT-SPW	5		M4*14
23	62901-43310	SCREW	1		
24	15401-10028	COLLAR	1		
25	62902-44111	INTAKE VALVE	1		
26	62902-44121	EXHAUST VALVE	1		
27	62901-44130	VALVE SPRING	2		
28	62908-44140	*RETAINER	2		
29	62907-44010	ROCKER ARM ASSY	2		
30	62901-44210	*ROCKER ARM	2		
31	62907-44220	*ADJUST SCREW	2		
32	62901-44231	*NUT	2		
33	12492-50310	ROLLER	1		φ5×31.8
34	62901-44241	ROCKER ARM COVER	1		
35	62901-44250	GASKET	1		
36	11022-04140	BOLT-SPW	3		M4*14
37	62600-51010	CLUTCH SET	1		
38	62600-51020	*CLUTCH SHOE ASSY	1		

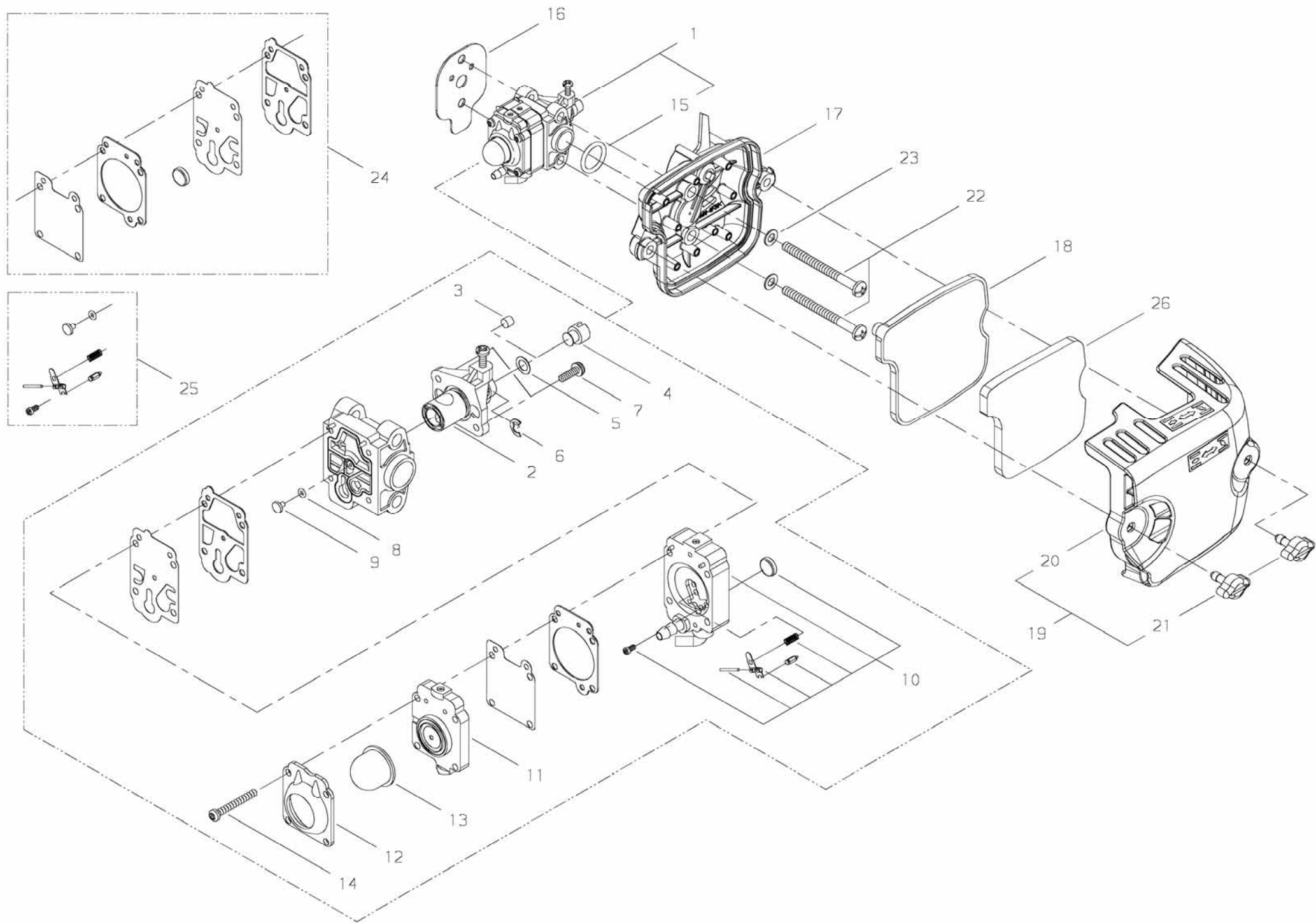
PRICE:(\$)  
[illegible]





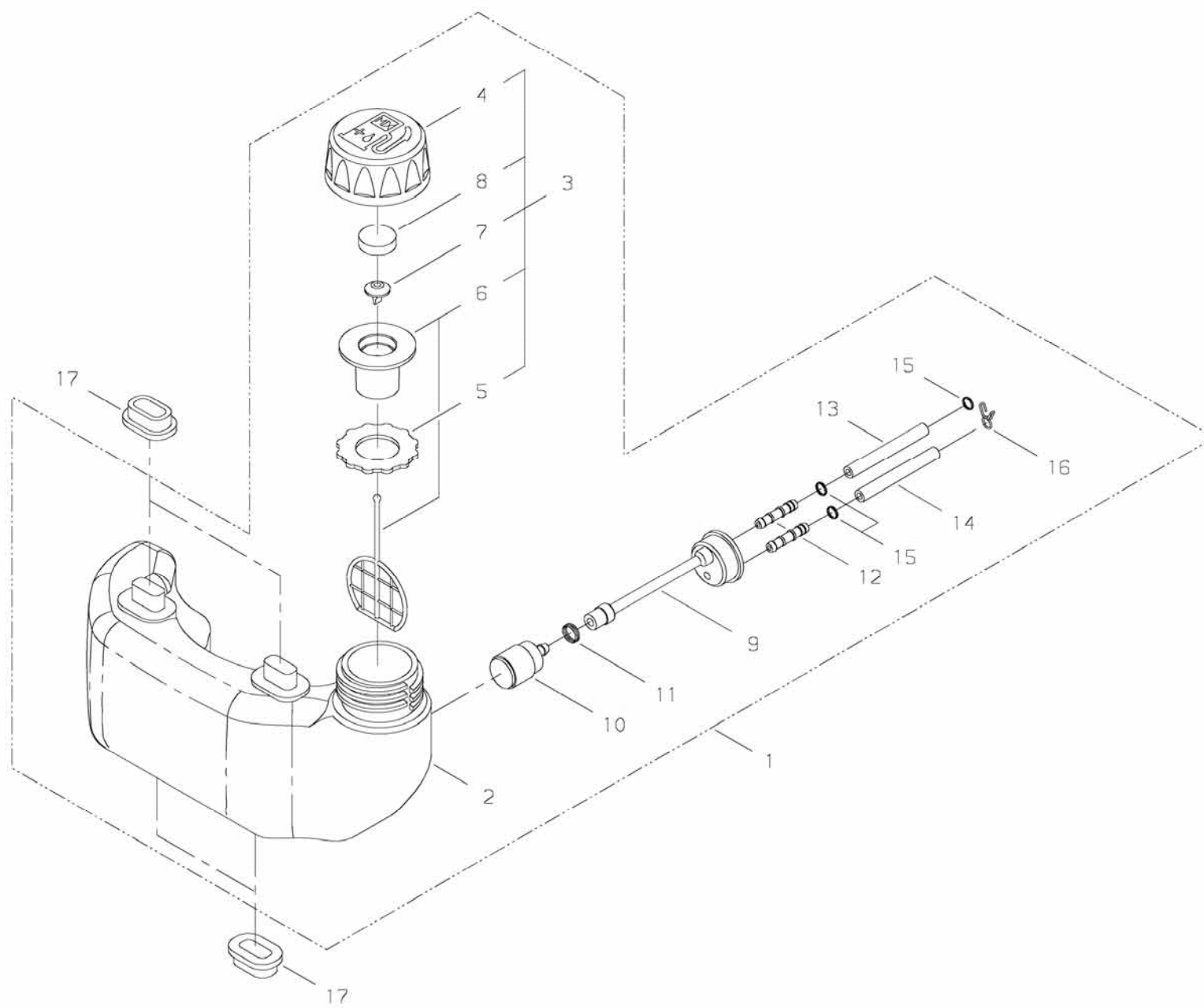
PRICE:(\$)

[illegible]



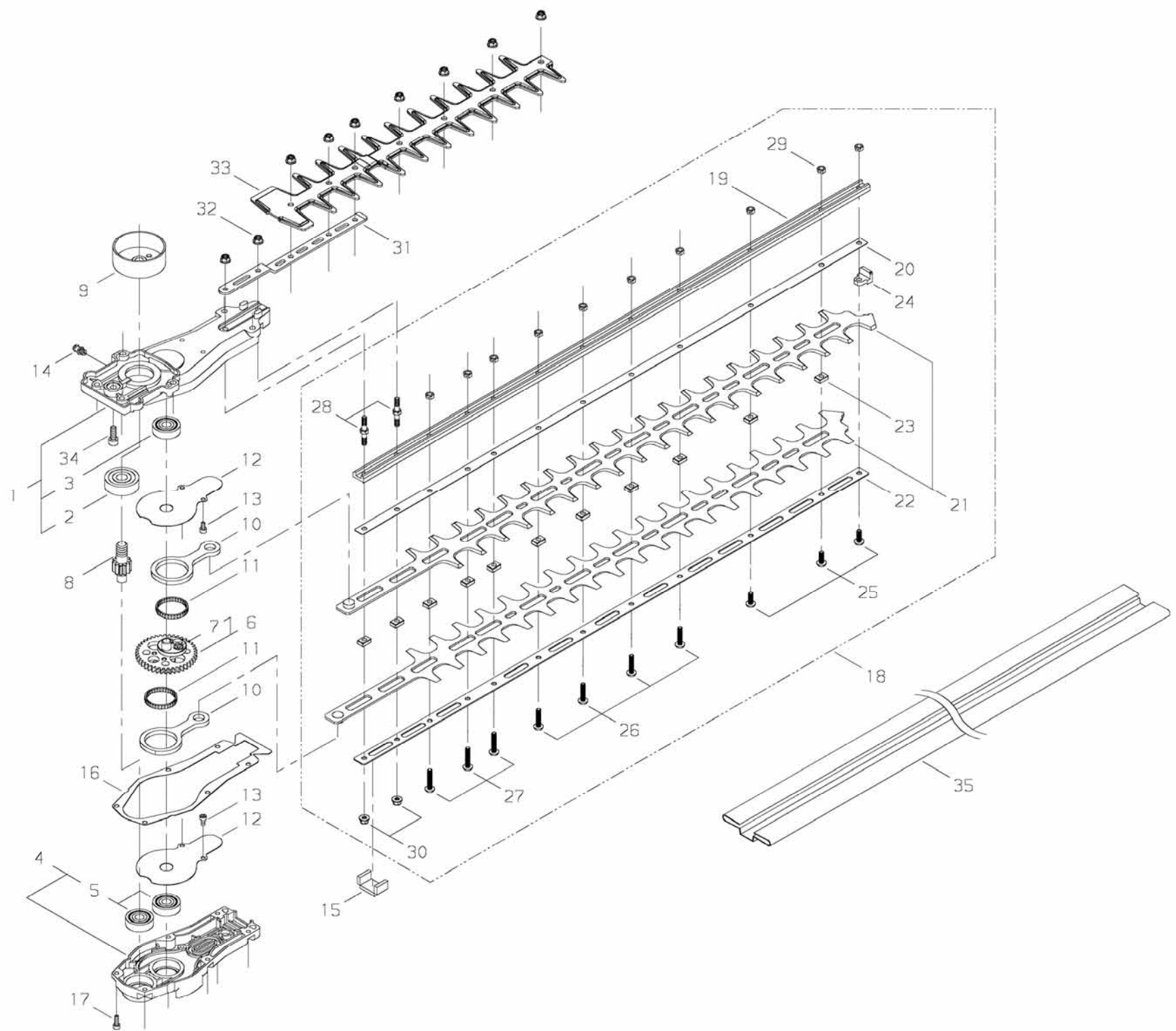
PRICE:(\$)

[illegible]



PRICE:(\$)

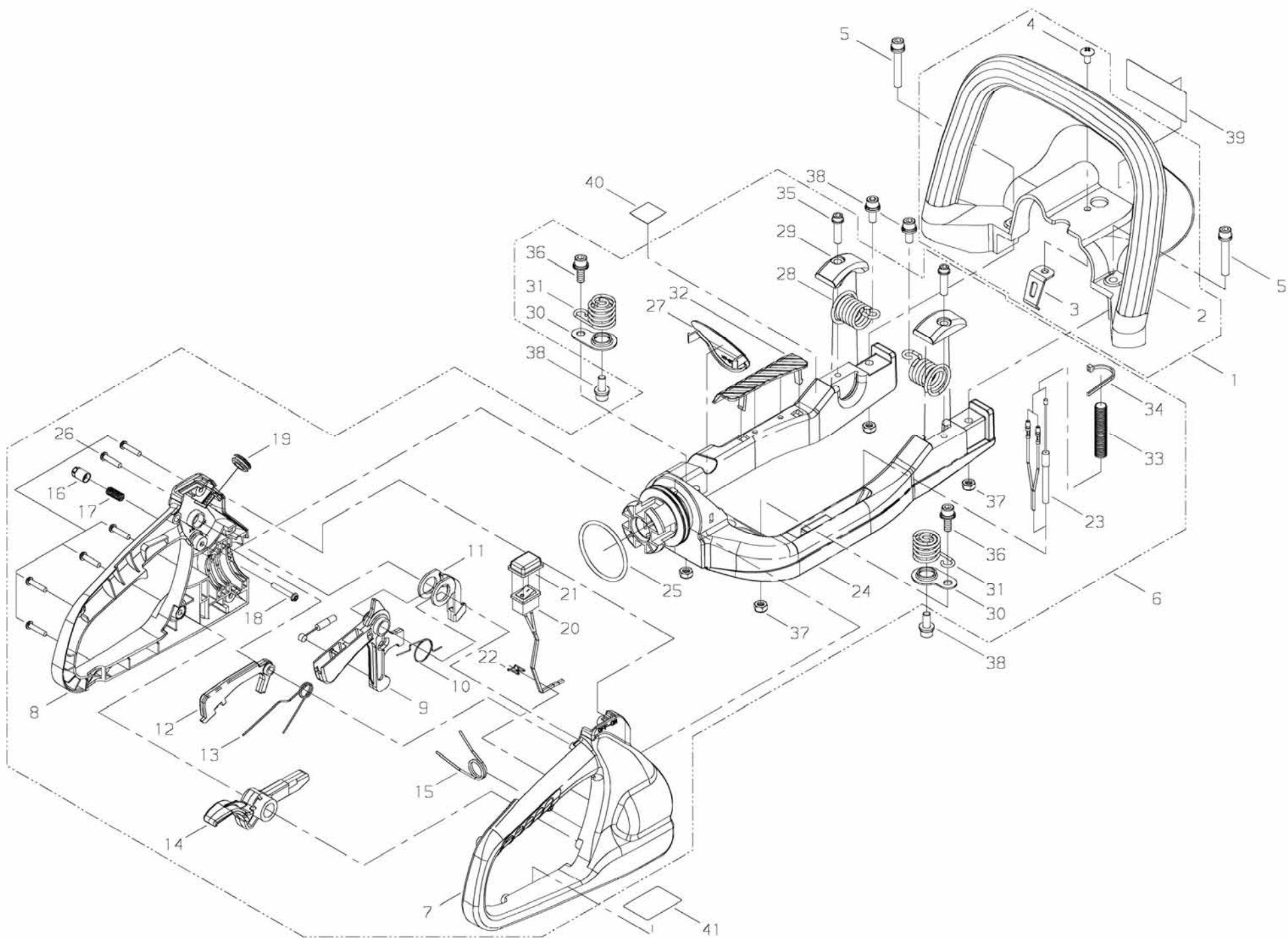
[illegible]



PRICE:(\$)

Ref. No.	Part No .	Part Name	Q`ty	Unit Price(\$)	Remarks
7-1	63600-61010	GEAR CASE COMP	1		
2	02006-06301	*BALL BEARING	1		6301DDU
3	02002-06200	*BALL BEARING	1		6200ZZ
4	63600-61020	CASE COVER COMP	1		
5	02002-06200	*BALL BEARING	2		6200ZZ
6	63600-61030	GEAR COMP	1		
7	63600-61320	*BOLT	4		M5x6
8	63600-61150	PINION SHAFT	1		
9	20870-61420	CLUTCH DRUM	1		
10	63600-61170	ROD	2		
11	63600-61330	NEEDLE BEARING	2		
12	63600-61340	PLATE	2		
13	01020-04080	BOLT	4		M4x8
14	20870-61640	GREASE NIPPLE	1		
15	63600-61350	PACKING	1		
16	63600-61360	GASKET	1		
17	01020-04140	BOLT	6		M4x14
18	63607-62011	CUTTER ASSY	1		30"
19	18501-70004	*GUIDE BAR	1		30"
20	63600-62310	*UPPER PLATE	1		
21	18500-70104	*BLADE	2		30" t2.2
22	63600-62320	*LOWER PLATE	1		
23	63600-62331	*SPACER	11		
24	63600-62340	*BLOCK	1		
25	11230-05140	*SCREW,BUTTON	3		M5x14
26	11230-05220	*SCREW,BUTTON	4		M5x22
27	11230-05250	*SCREW,BUTTON	3		M5x25
28	63600-62370	*BOLT	2		
29	72935-61240	*LOCK NUT	10		M5
30	11525-05231	*U NUT	2		M5
31	63600-62361	HOLDER	1		
32	11525-05231	U NUT	5		M5
33	63606-63310	PROTECTOR	1		
34	01020-06160	BOLT	3		M6x16
35	19601-01603	BLADE COVER	1		30"

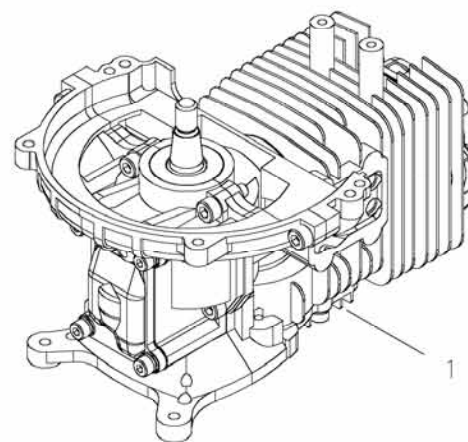




PRICE:(\$)

Ref. No.	Part No.	Part Name	Q`ty	Unit Price(\$)	Remarks
8-1	68801-64011	FRONT HANDLE ASSY	1		
2	68801-64111	*FRONT HANDLE	1		
3	68801-64310	*STOPPER	1		
4	01215-05103	*SCREW,TRUSS	1		M5x10
5	11022-06400	BOLT-SPW	2		M6x40
6	68801-65010	REAR HANDLE ASSY	1		
7	68801-65110	*HANDLE,RIGHT	1		
8	68801-65120	*HANDLE,LEFT	1		
9	68801-65330	*THROTTLE LEVER	1		
10	68801-65340	*COIL SPRING	1		
11	68801-65350	*SUBLEVER	1		
12	68801-65360	*LOCK LEVER	1		
13	68801-65370	*THROTTLE SPRING	1		
14	68801-65380	*LOCK LEVER	1		
15	68801-65390	*LOCK SPRING	1		
16	68801-65400	*KNOB	1		
17	68801-65410	*COIL SPRING	1		
18	11273-04250	*SCREW,TAPTITE	1		4x25
19	68801-65420	*GROMMET	1		
20	68801-65430	*SWITCH	1		
21	68801-65440	*SWITCH COVER	1		
22	68801-65450	*CLIP	1		
23	68801-65460	*THROTTLE CABLE	1		
24	68801-65470	*HANDLE STAY	1		
25	02302-05000	*O RING	1		G50
26	11272-04180	*SCREW,TAPPING	6		4x18
27	68801-65480	*CAP	1		
28	68801-65490	*SPRING	2		
29	68801-65500	*SPRING HOLDER	2		
30	68801-65510	*PLATE	2		
31	68801-65520	*SPRING	2		
32	68801-65530	*COVER	1		
33	68801-65540	*TUBE	1		
34	15210-12305	*BAND	1		
35	22169-32220	*BOLT,PC	2		6x23
36	11024-06180	*BOLT-SLPW	2		M6x18
37	11525-06210	*U NUT	4		M6
38	11038-06160	BOLT-SPW	4		M6x16 φ12.5xt1.6

PRICE:(\$)  
[illegible]



PRICE:(\$)  
[illegible]