

# **shindaiwa**

## **PARTS PRICE LIST**

<b>HT 230</b>
---------------

**Shindaiwa Corporation**

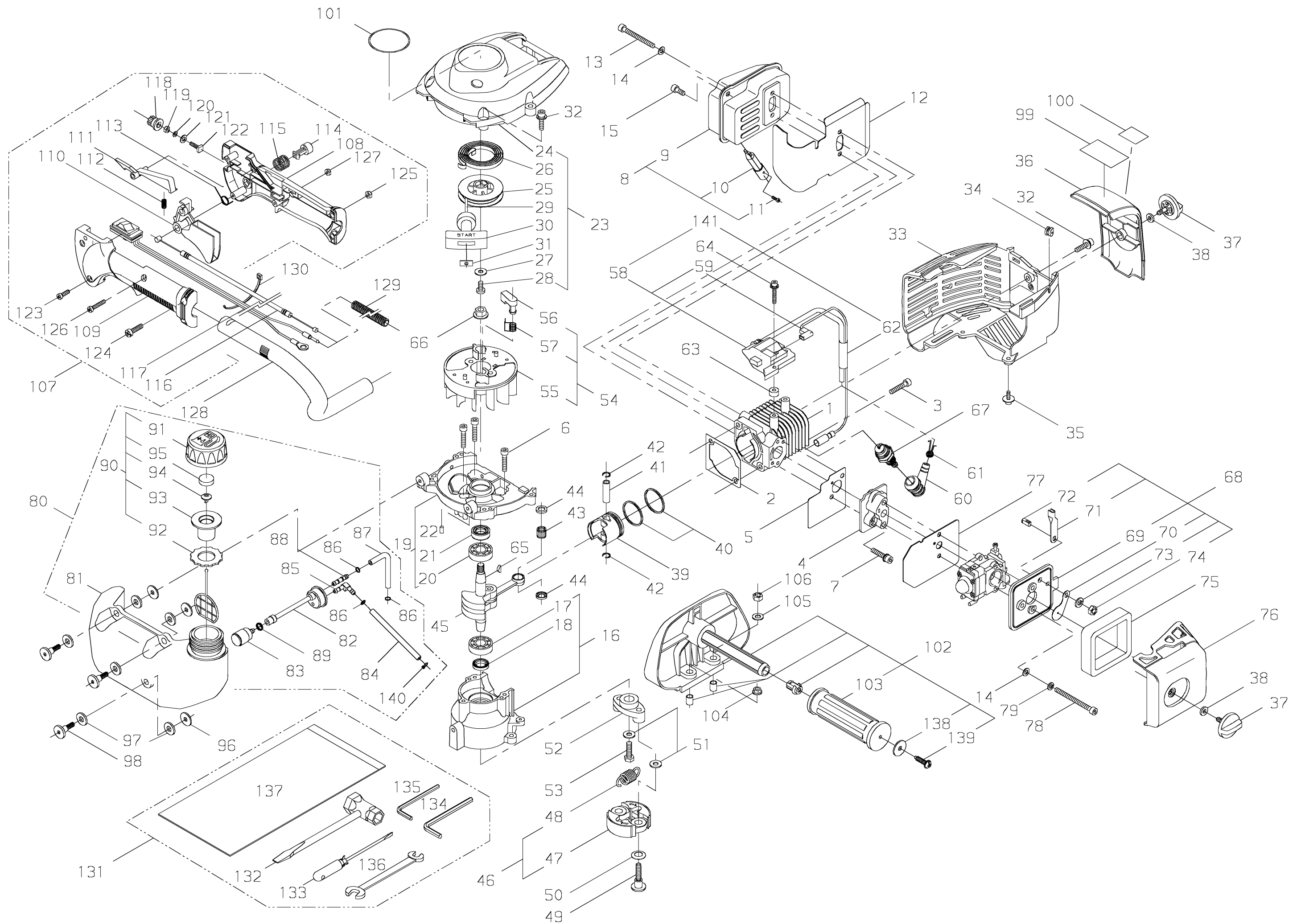
6-2-11, Ozuka-Nishi, Asaminami-ku, Hiroshima, 731-3167, Japan

Telephone (082) 849-2005 Fax (082) 849-2481

**HT 230 / EC 1 - 30**

**MAR . 2 , 2009**

**Printed in Japan**



PRICE:(\$)

Ref. No.	Part No.	Part Name	Q`ty	Unit Price(\$)	Remarks
1-1	62809-12111	CYLINDER	1		
2	20870-12121	GASKET	1		
3	01020-05250	BOLT	5		M5×25
4	20016-12213	INSULATOR	1		
5	20870-12220	GASKET	1		
6					
7	11022-05300	BOLT-SPW	2		M5×30
8	70871-15100	MUFFLER ASSY	1		
9	70871-15110	*MUFFLER	1		
10	70871-15120	*SPARK ARRESTER	1		
11	01270-03062	*SCREW,TAPPING	1		
12	20870-15122	GASKET	1		
13	01020-05500	BOLT	2		M5×50
14	01610-05080	WASHER	4		φ5
15	01020-05120	BOLT	1		M5×12
16	20870-21100	CRANKCASE,PTO COMP	1		
17	12900-60010	*BALL BEARING	1		6001
18	22150-21250	*OIL SEAL	1		
19	20870-21301	CRANKCASE,M COMP	1		
20	12900-60010	*BALL BEARING	1		6001
21	20000-21211	*OIL SEAL	1		
22	12492-40080	*ROLLER	2		
23	20870-31102	FAN COVER SUBASSY	1		
24	20870-31112	*FAN COVER	1		
25	70030-75120	*REEL	5		
26	70030-75130	*RECOIL SPRING	1		
27	70030-75140	*WASHER	1		
28	20035-75170	*SCREW	1		
29	70030-75160	*ROPE	1		
30	20010-75190	*STARTER KNOB	1		
31	20010-75210	*STOPPER	1		
32	11060-05202	BOLT,ADHESIVE	5		M5×20
33	20870-32111	CYLINDER COVER	1		
34	20011-72120	GROMMET	1		
35	11060-04163	BOLT,ADHESIVE	2		M4×16
36	20870-33111	COVER	1		
37	20870-33120	KNOB	2		
38	23627-21220	COLLAR	2		φ5

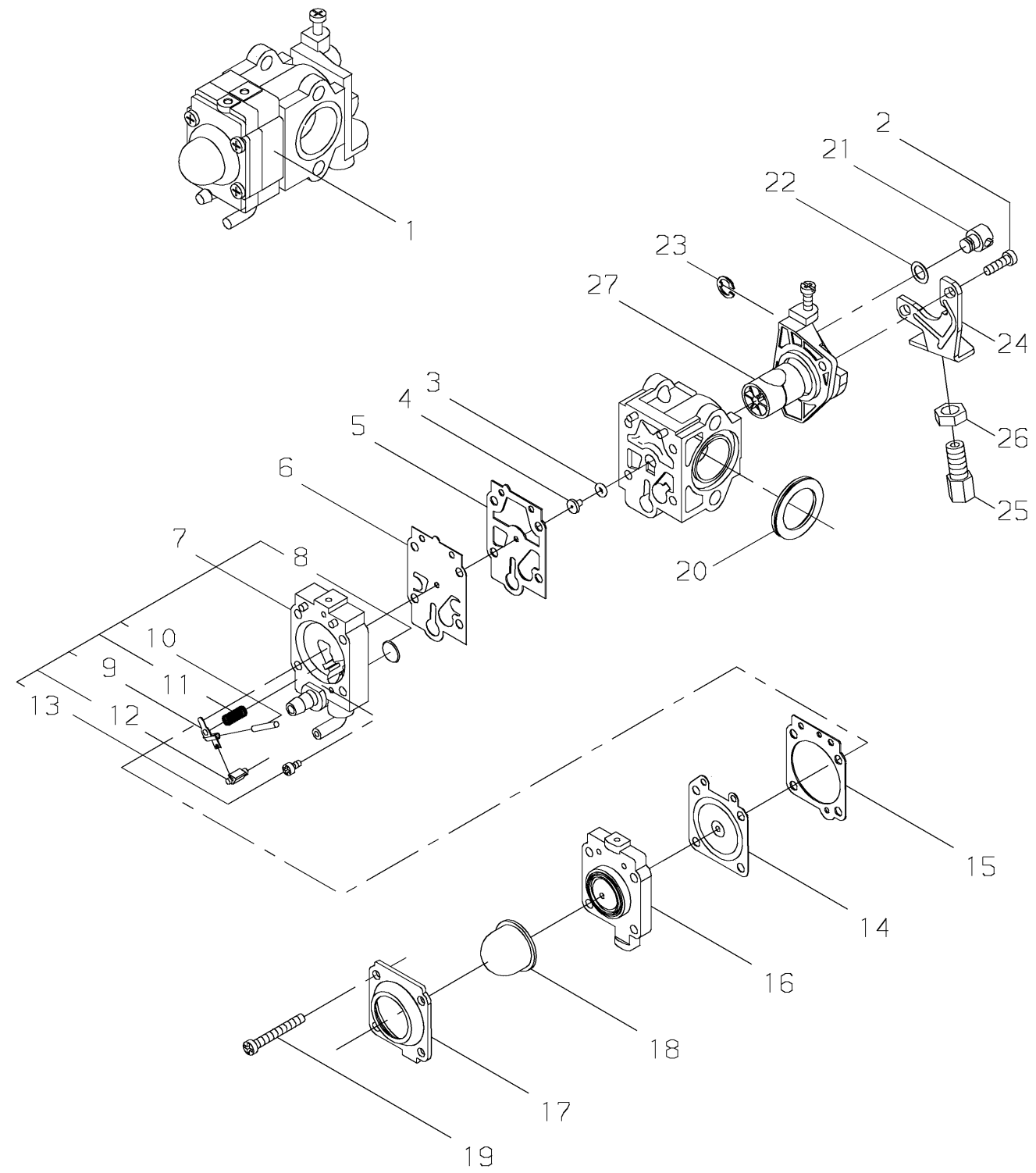
PRICE:(\$)

Ref. No.	Part No.	Part Name	Q`ty	Unit Price(\$)	Remarks
1-39	20075-41110	PISTON	1		
40	20000-41210	PISTON RING	2		
41	20075-41310	PISTON PIN	1		
42	70030-41320	SNAP RING	2		
43	37013-41230	NEEDLE BEARING	1		
44	37013-41240	THRUST WASHER	2		
45	20870-42101	CRANKSHAFT COMP	1		
46	70140-51012	CLUTCH SHOE SUBASSY	1		
47	70140-51113	*CLUTCH SHOE	2		
48	37013-51310	*COIL SPRING	1		
49	20087-51210	BOLT	2		M6
50	20087-51231	SPRING PLATE	2		
51	22100-71430	WASHER	3		φ6
52	20870-51211	CLUTCH BOSS	1		
53	20870-51220	BOLT	1		M6×18
54	20870-71100	ROTOR SUBASSY	1		
55	20870-71110	*ROTOR	1		
56	20870-71120	*RATCHET	1		
57	20870-71130	*COIL SPRING	1		
58	20870-71202	*COIL ASSY	1		
59	20870-71222	**CORD	1		
60	22160-72220	PLUG CAP	1		
61	20000-72230	SPRING,PLUG	1		
62	20016-71651	*TUBE	1		φ8
63	70030-71620	INSULATOR	2		
64	11024-04261	BOLT-SLPW	2		M4×26
65	02403-03100	KEY	1		
66	20035-71220	NUT	1		M8
67	13000-13406	SPARK PLUG	1		BMR6A
68	20870-82100	CLEANER BODY SUBASSY	1		
69	20870-82111	*CLEANER BODY	1		
70	20115-82120	*CHOKE PLATE	1		
71	20870-82120	*CHOKE LEVER	1		
72	20110-82140	*CHOKE SHAFT	1		
73	01600-06151	*SPRING WASHER	1		
74	11524-06211	*U NUT	1		
75	20870-82210	FILTER	1		
76	20870-82312	CLEANER COVER	1		

PRICE:(\$)

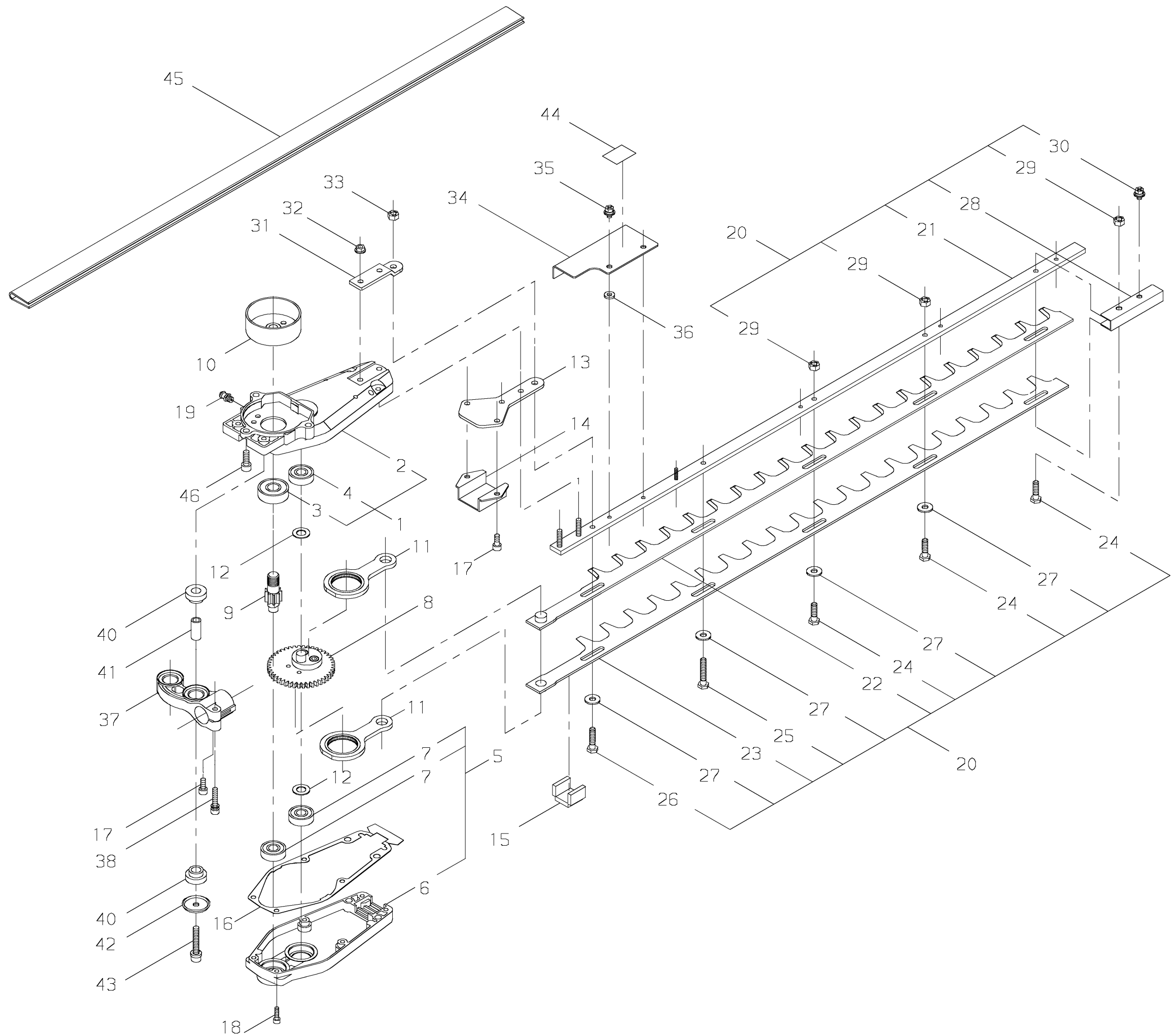
Ref. No.	Part No.	Part Name	Q`ty	Unit Price(\$)	Remarks
1-77	20870-82411	GASKET	1		
78	01020-05550	BOLT	2		M5×55
79	01600-05131	SPRING WASHER	2		φ5
80	62800-85013	FUEL TANK ASSY	1		
81	20870-85251	*FUEL TANK	1		
82	20870-85121	*FUEL PIPE	1		
83	20016-85400	*FUEL FILTER	1		
84	20870-85132	*PIPE	1		
85	20087-85340	*JOINT	1		
86	20020-85540	*CLIP	3		
87	20870-85140	*PIPE	1		
88	72933-85620	*JOINT	1		
89	20000-85350	*CLAMP,B	1		
90	62800-85021	*FUEL CAP ASSY	1		
91	20870-85310	**FUEL CAP	1		
92	20870-85160	**PACKING	1		
93	62800-85310	**HOLDER COMP	1		
94	20870-85320	**VALVE,FUEL	1		
95	20870-85210	**PACKING	1		
96	15401-10022	COLLAR	3		φ18×φ5.2 t=1.6
97	20870-85230	COLLAR	6		
98	20870-85240	BOLT	3		M5
99	19402-00148	LABEL,CAUTION	1		
100	19404-00048	LABEL,DECIBEL	1		106dB(A)
101	20870-91120	LABEL,TRADE	1		
102	20870-64104	FRONT HANDLE COMP	1		
103	20870-64122	*GRIP	1		
104	11526-05212	FLANGE NUT	1		M5
105	01613-06100	WASHER	1		φ6 t=1.0
106	11525-06210	U NUT	1		M6
107	20870-65103	REAR HANDLE SUBASSY	1		
108	70871-65112	*BODY,RIGHT	1		
109	70871-65122	*BODY,LEFT	1		
110	70871-65130	*LEVER	1		
111	70871-65140	*LOCK LEVER	1		
112	70871-65150	*COIL SPRING	1		
113	70871-65160	*COIL SPRING	1		
114	70871-65170	*BUTTON	1		

PRICE:(\$)  
[illegible]



PRICE:(\$)  
[illegible]

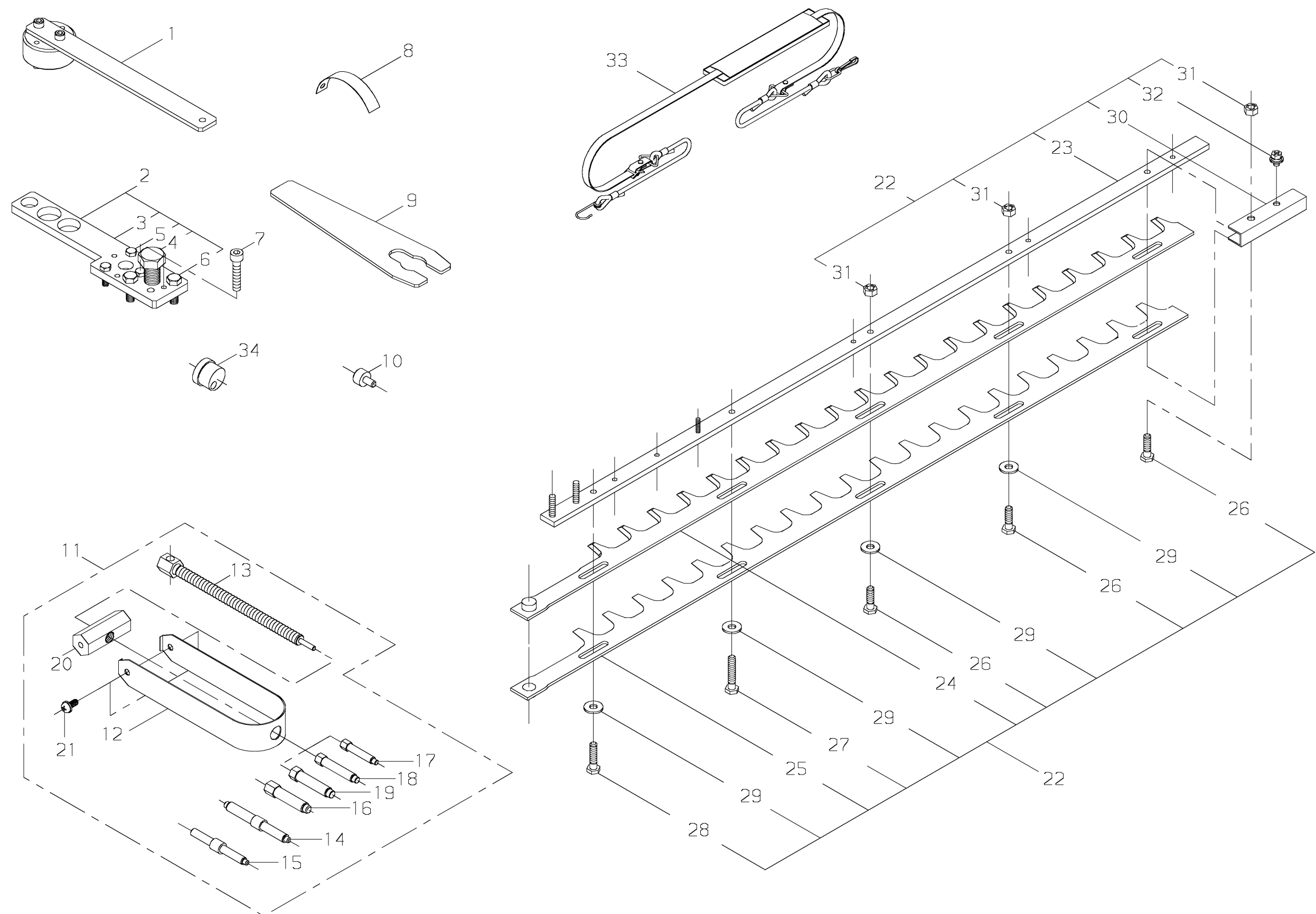




PRICE:(\$)

Ref. No.	Part No.	Part Name	Q`ty	Unit Price(\$)	Remarks
3-1	20870-61103	GEAR CASE COMP	1		
2	20870-61113	*GEAR CASE	1		
3	02006-06201	*BALL BEARING	1		6201DDU
4	02002-06000	*BALL BEARING	1		6000ZZ
5	20870-61203	CASE COVER COMP	1		
6	20870-61213	*CASE COVER	1		
7	02002-06000	*BALL BEARING	2		6000ZZ
8	20870-61301	GEAR COMP	1		
9	20870-61410	PINION SHAFT	1		
10	20870-61420	CLUTCH DRUM	1		
11	20870-61500	ROD COMP	2		
12	15401-11008	COLLAR	2		
13	20870-61611	PLATE	1		
14	20870-61621	PLATE	1		
15	20870-61630	PACKING	1		
16	20870-61650	GASKET, CASE	1		
17	01020-05120	BOLT	3		M5×12
18	01020-04140	BOLT	6		M4×14
19	20870-61640	GREASE NIPPLE	1		
20	70872-62101	CUTTER SUBASSY	1		CARB·EPA
20	63810-62010	CUTTER ASSY	1		CE·YB·EC
21	20870-62201	*GUIDE BAR COMP	1		
22	18500-70000	*BLADE	1		CARB·EPA
22	18500-70004	*BLADE	1		CE·YB·EC
23	18500-70001	*BLADE	1		CARB·EPA
23	18500-70005	*BLADE	1		CE·YB·EC
24	20870-62110	*BOLT	3		M6
25	20870-62120	*BOLT	1		M6
26	20870-62150	*BOLT	1		M6
27	20870-62131	*WASHER	4		
28	20870-62141	*PLATE	1		
29	11525-06210	*U NUT	3		M6
30	20870-63120	*BOLT-SLPW	1		M5×8
31	20870-62210	HOLDER	1		
32	11526-05212	FLANGE NUT	2		M5
33	11525-06210	U NUT	1		M6
34	20870-63211	PROTECTOR	1		
35	20870-63120	BOLT-SLPW	2		M5×8

PRICE:(\$)  
[illegible]



PRICE:(\$)

Ref. No.	Part No .	Part Name	Q`ty	Unit Price(\$)	Remarks
4-1	20870-98010	SPANNER	1		
2	20000-96104	PULLER ASSY	1		
3	20000-96114	*LEVER	1		
4	22100-96121	*CENTER BOLT	1		M16
5	20000-96130	*BOLT	3		
6	20000-96140	*BOLT	2		
7	01020-06350	BOLT	2		M6x35
8	20000-96210	GAP GAUGE	1		
9	20000-96411	ROTOR SPANNER	1		
10	20021-96420	STOPPER	2		
11	20021-96601	PULLER ASSY	1		
12	20021-96611	*PULLER	1		
13	20021-96621	*BOLT	1		
14	20000-96631	*GUIDE PIN	1		
15	20035-96630	*GUIDE PIN	1		
16	20021-96630	*GUIDE PIN	1		
17	20021-96650	*PIN,ADAPTER	1		
18	20021-96660	*PIN,ADAPTER	1		
19	20021-96670	*PIN,ADAPTER	1		
20	20000-96640	*BOSS	1		
21	01211-06120	*SCREW-SW	2		
22	20870-98040	CUTTER ASSY	1		
23	20870-62201	*GUIDE BAR COMP	1		
24	18500-70002	*BLADE	1		
25	18500-70003	*BLADE	1		
26	20870-62110	*BOLT	3		M6x20
27	20870-62120	*BOLT	1		M6x32
28	20870-62150	*BOLT	1		M6x25
29	20870-62131	*WASHER	4		
30	20870-62141	*PLATE	1		
31	11525-06210	*U NUT	3		M6
32	20870-63120	*BOLT-SLPW	1		M5x8
33	22910-97100	STRAP ASSY	1		
34	20870-98050	HOLDER	1		
35	70870-98020	PISTON SET	1		
36	20000-41210	PISTON RING	2		
37	20870-12121	GASKET	1		
38	20075-41111	PISTON	1		

PRICE:(\$)  
[illegible]