

shindaiwa

PARTS PRICE LIST

2 3 0 P H S

Shindaiwa Corporation

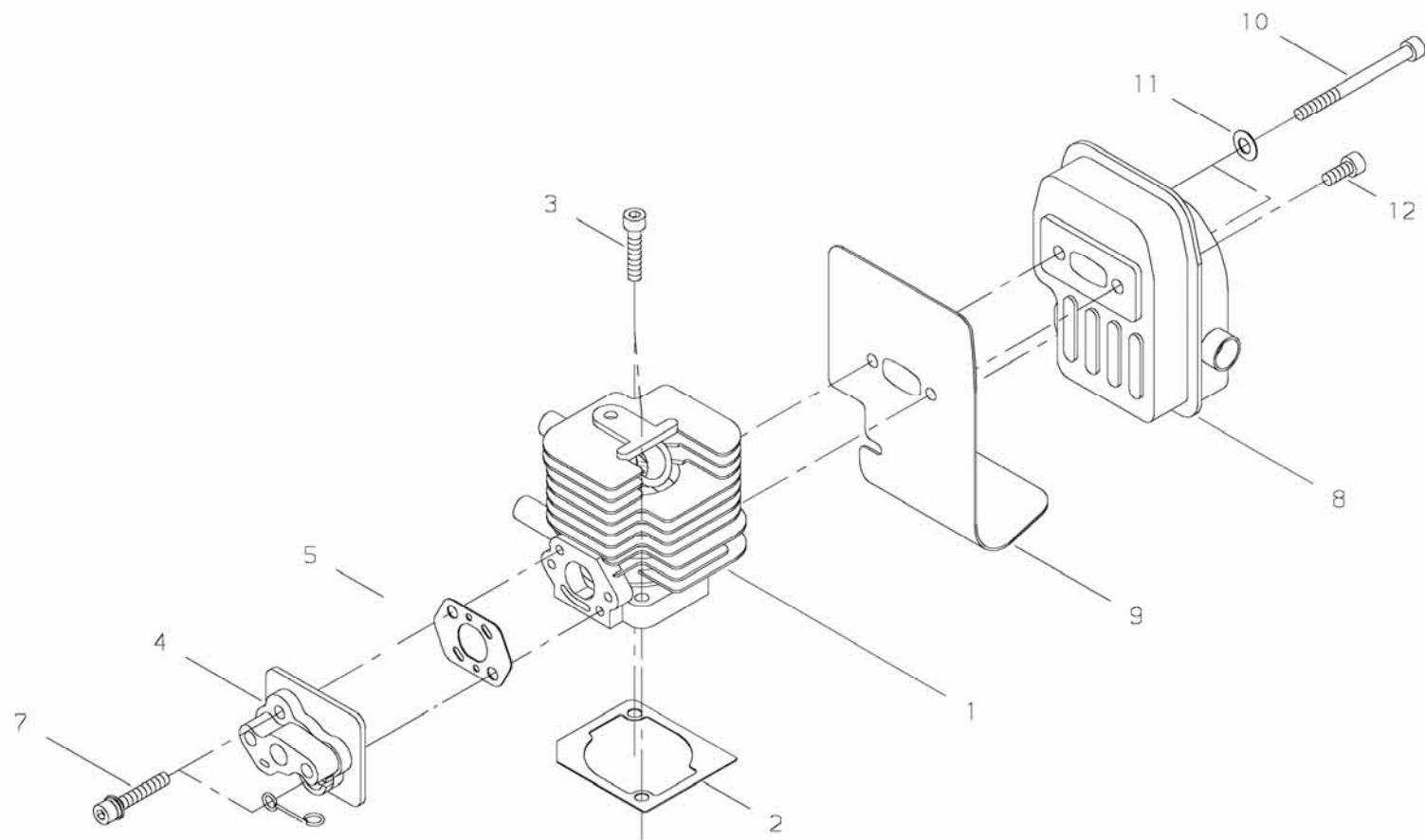
6-2-11, Ozuka-Nishi, Asaminami-ku, Hiroshima, 731-3167, Japan

Telephone (082) 849-2005 Fax (082) 849-2481

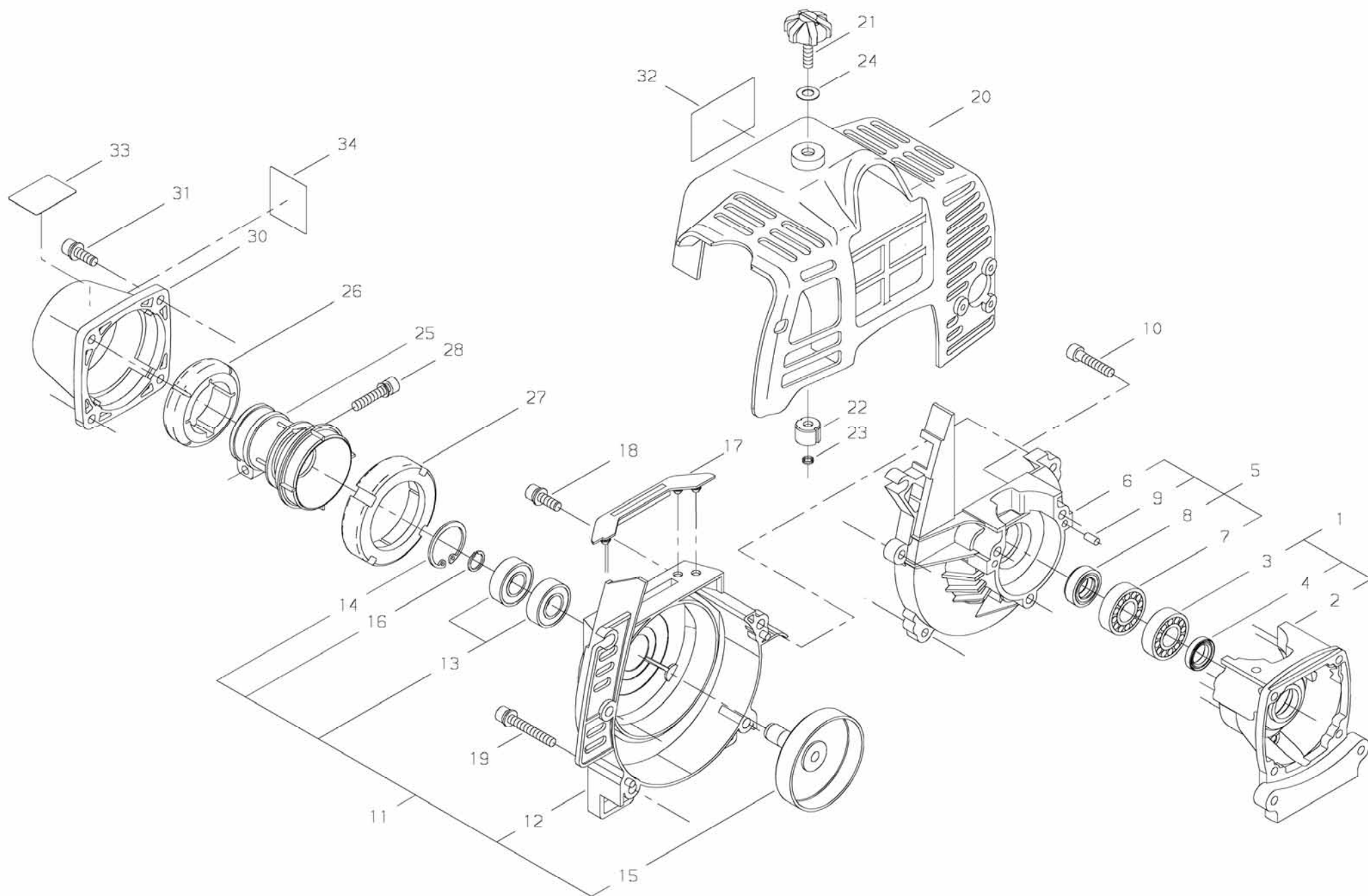
2 3 0 P H S / E C 1

M A R . 2 , 2 0 0 9

P r i n t e d i n J a p a n

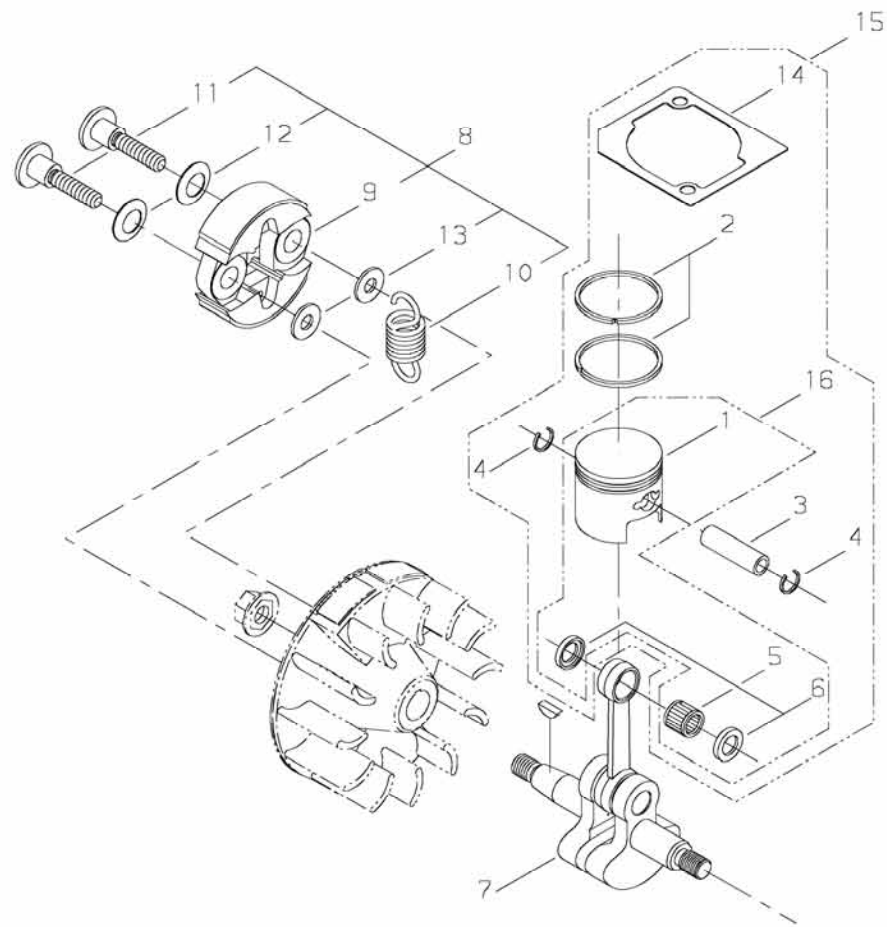


PRICE:(\$)
[illegible]



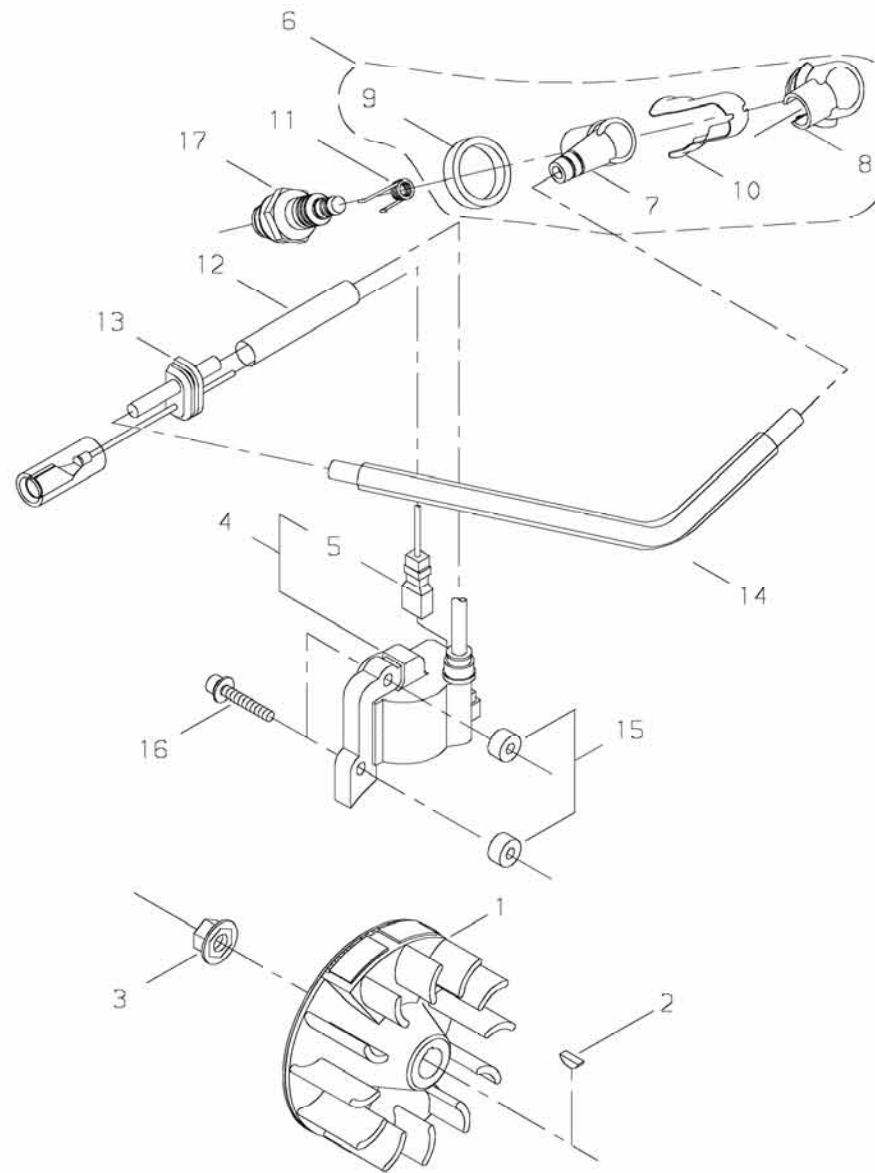
PRICE:(\$)

Ref. No.	Part No.	Part Name	Q`ty	Unit Price(\$)	Remarks
2-1	20016-21100	CRANKCASE,S COMP	1		
2	20016-21111	*CRANKCASE,S	1		
3	12900-60010	*BALL BEARING	1		6001
4	22150-21250	*OIL SEAL	1		
5	20016-21200	CRANKCASE,M COMP	1		
6	20016-21120	*CRANKCASE,M	1		
7	12900-60010	*BALL BEARING	1		6001
8	20000-21211	*OIL SEAL	1		
9	12492-40080	*ROLLER	2		
10	01020-05250	BOLT	3		M5x25
11	62010-31011	FAN COVER COMP	1		
12	70140-31113	*FAN COVER	1		
13	02002-06000	*BALL BEARING	2		6000ZZ
14	02432-26120	*SNAP RING	1		φ26
15	20087-31210	*CLUTCH DRUM	1		
16	22000-13320	*SNAP RING	1		
17	70140-31130	*CUSHION	1		
18	11022-05160	BOLT-SPW	2		M5x16
19	11022-05450	BOLT-SPW	2		M5x45
20	70140-32111	CYLINDER COVER	1		
21	20018-31251	KNOB	1		
22	20018-31260	INSULATOR	1		
23	20018-31270	CLIP	1		
24	20024-81790	CONE WASHER	1		
25	20018-31411	JOINT	1		
26	20018-31420	FRONT CUSHION	1		
27	20018-31430	REAR CUSHION	1		
28	11023-05250	BOLT-DW	1		M5x25
30	70135-31470	CAP	1		
31	11022-05160	BOLT-SPW	4		M5x20
32	65022-91310	LABEL,TRADE	1		
33	19402-00228	LABEL,CAUTION	1		
34	19404-00051	LABEL,DECIBEL	1		111dB(A)

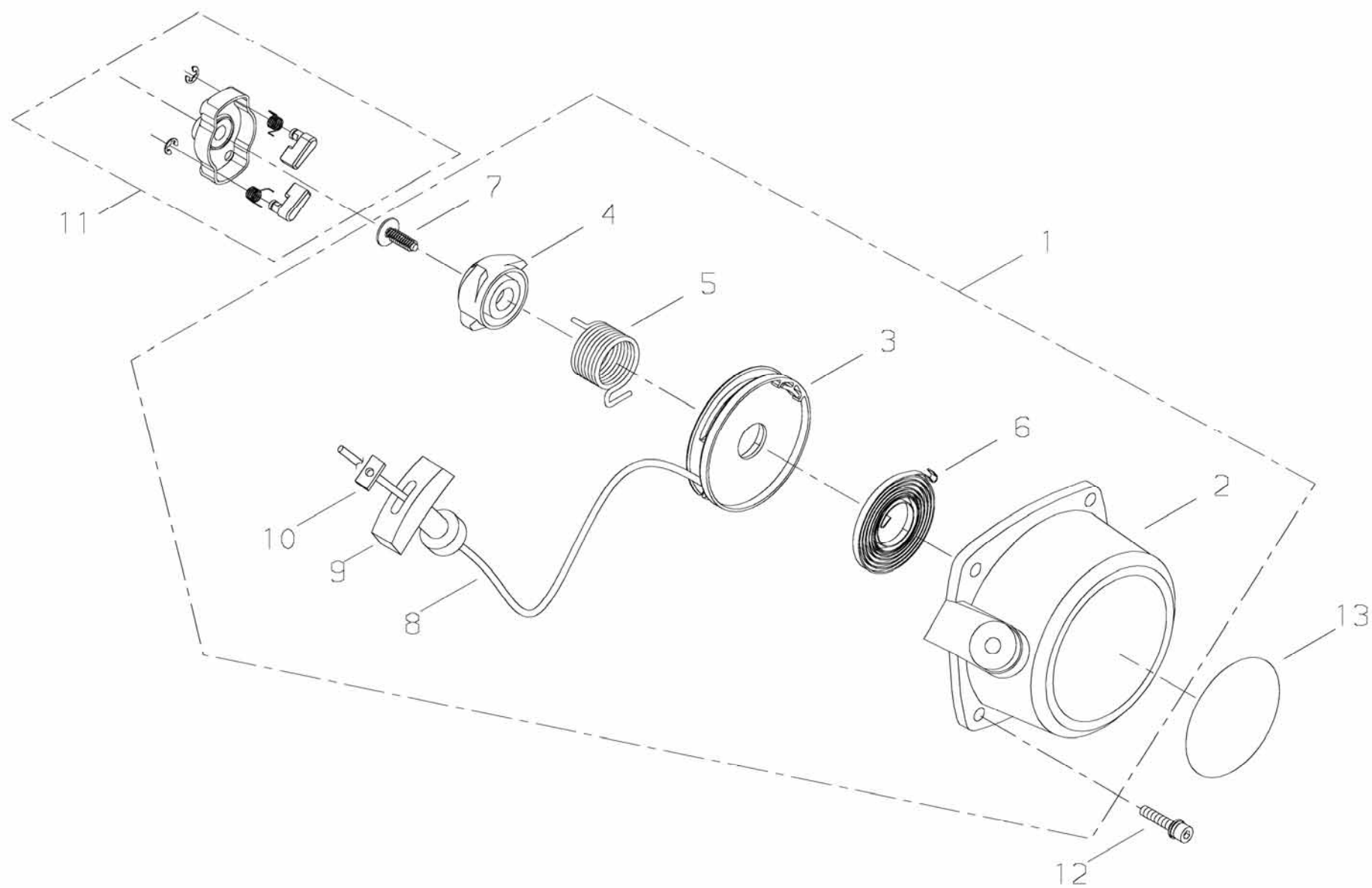


PRICE:(\$)

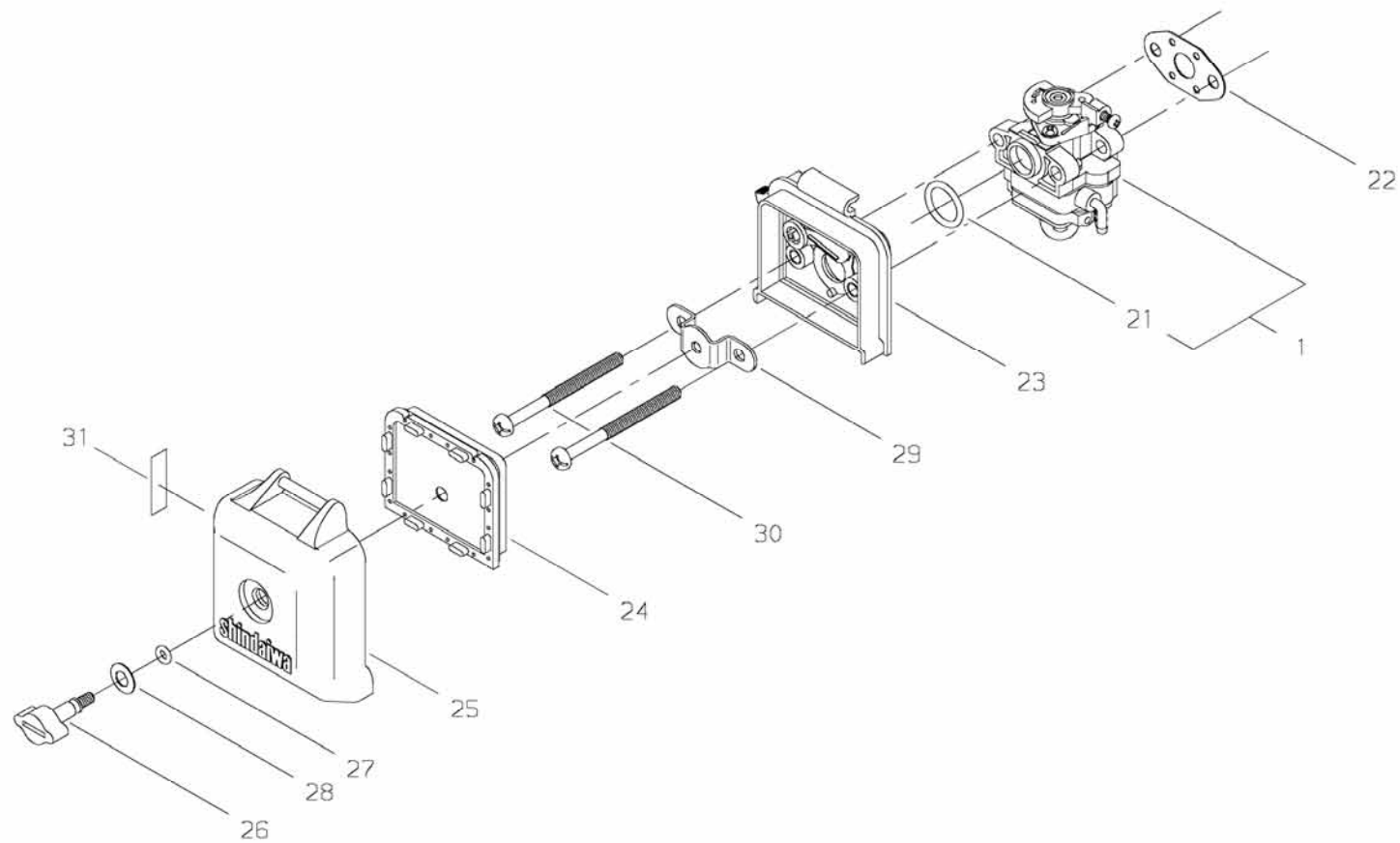
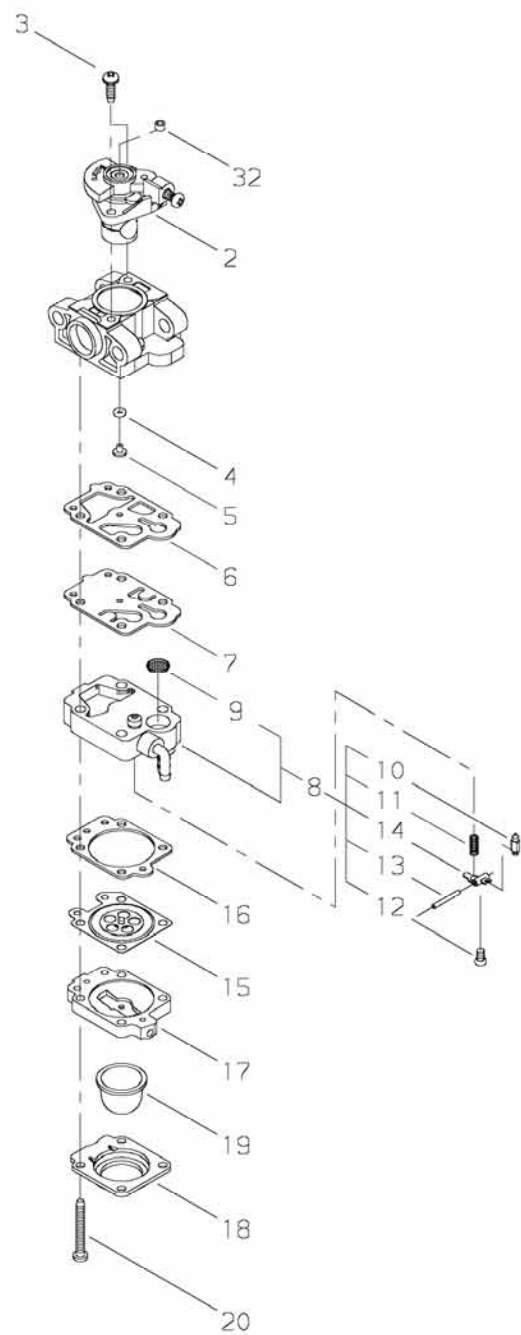
[illegible]



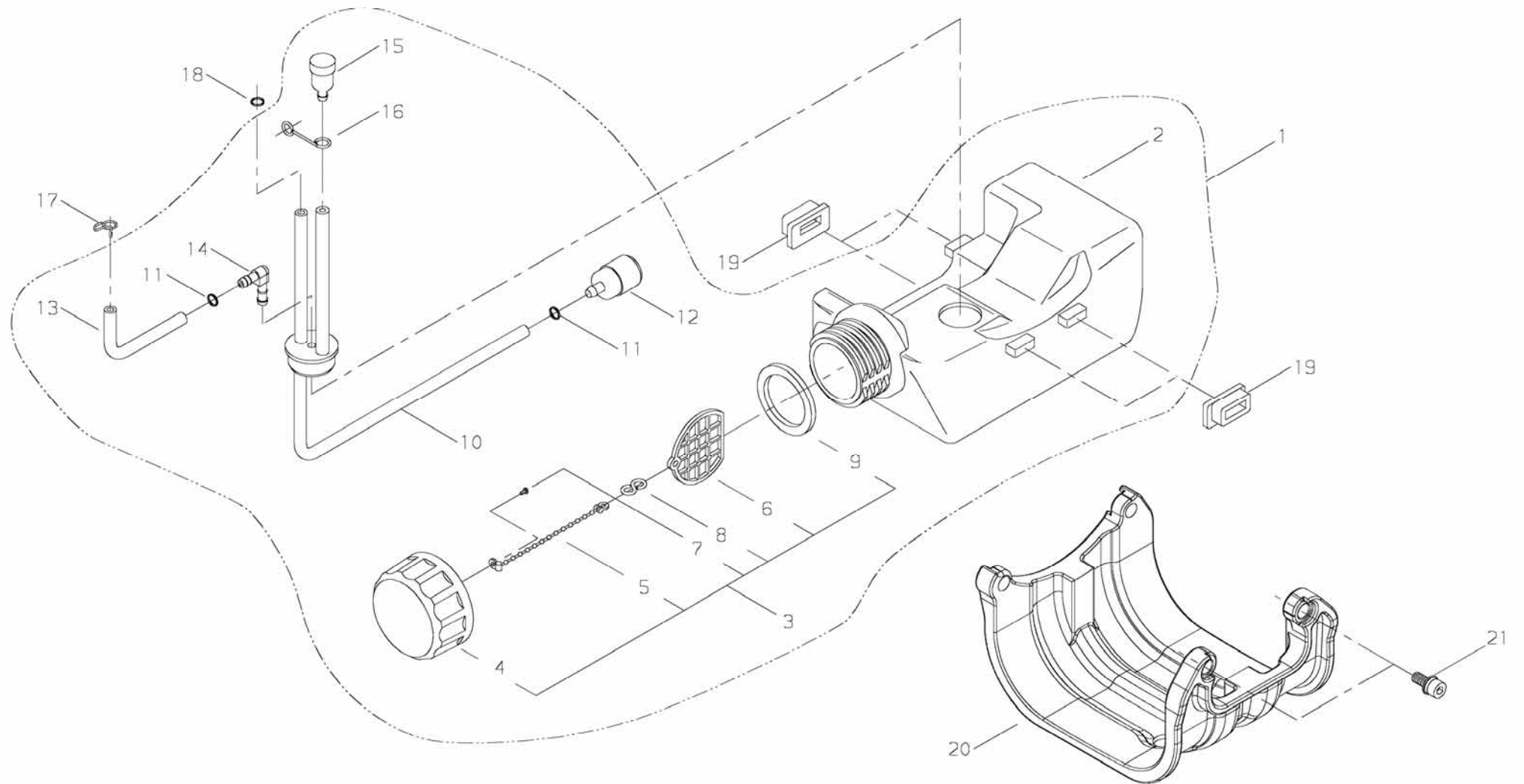
PRICE:(\$)
[illegible]



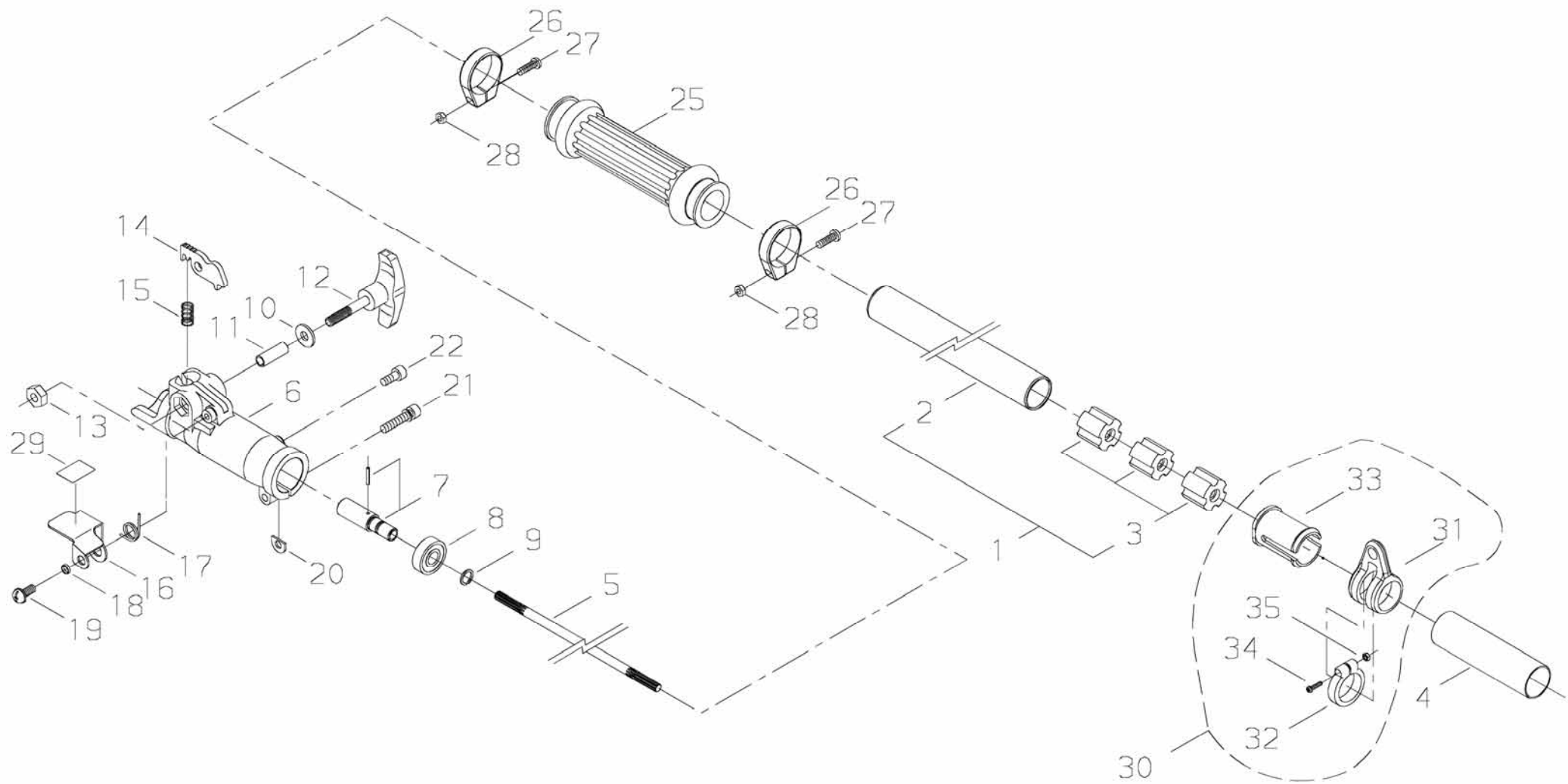
PRICE:(\$)
[illegible]



PRICE:(\$)
[illegible]

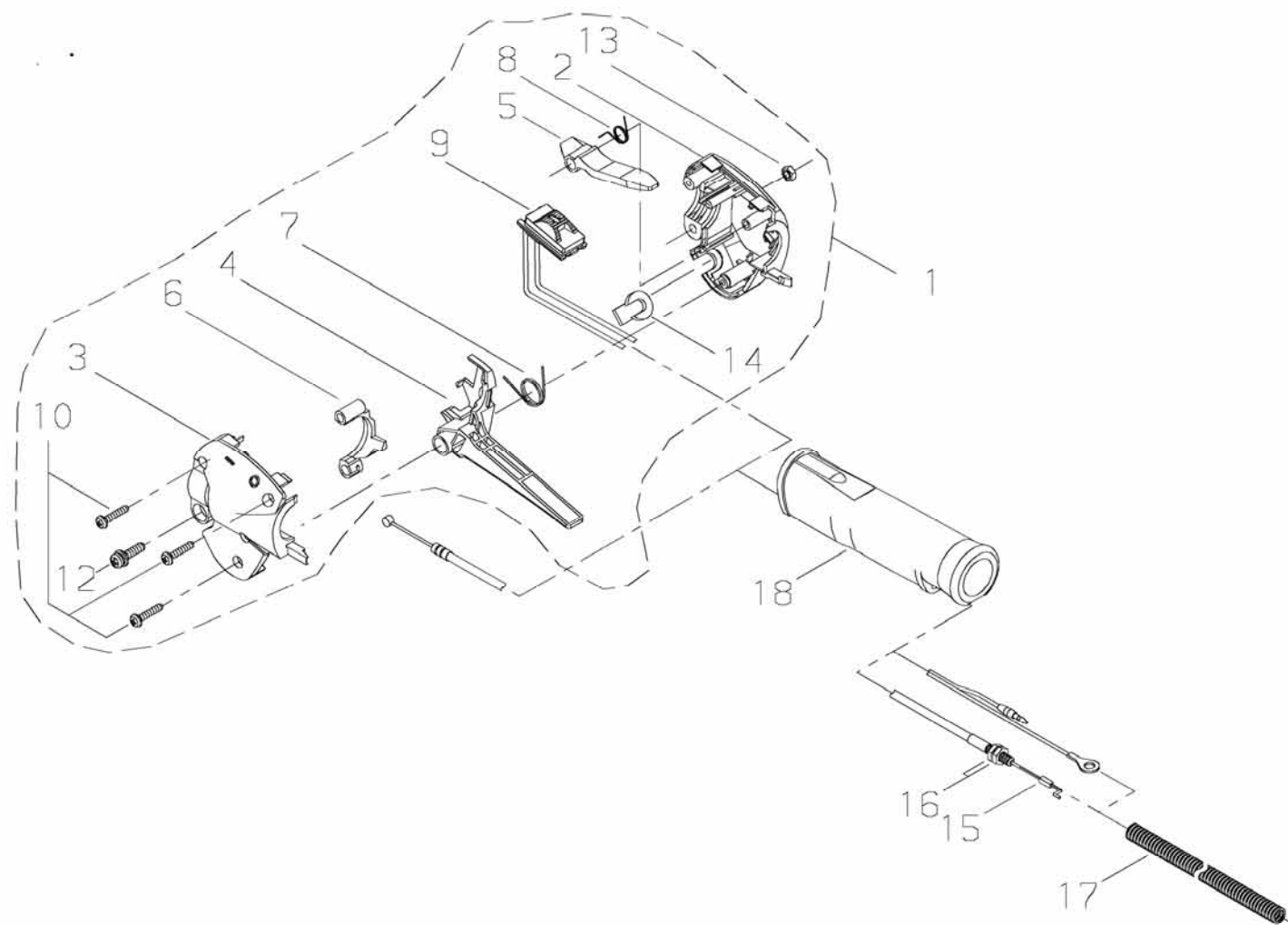


PRICE:(\$)
[illegible]



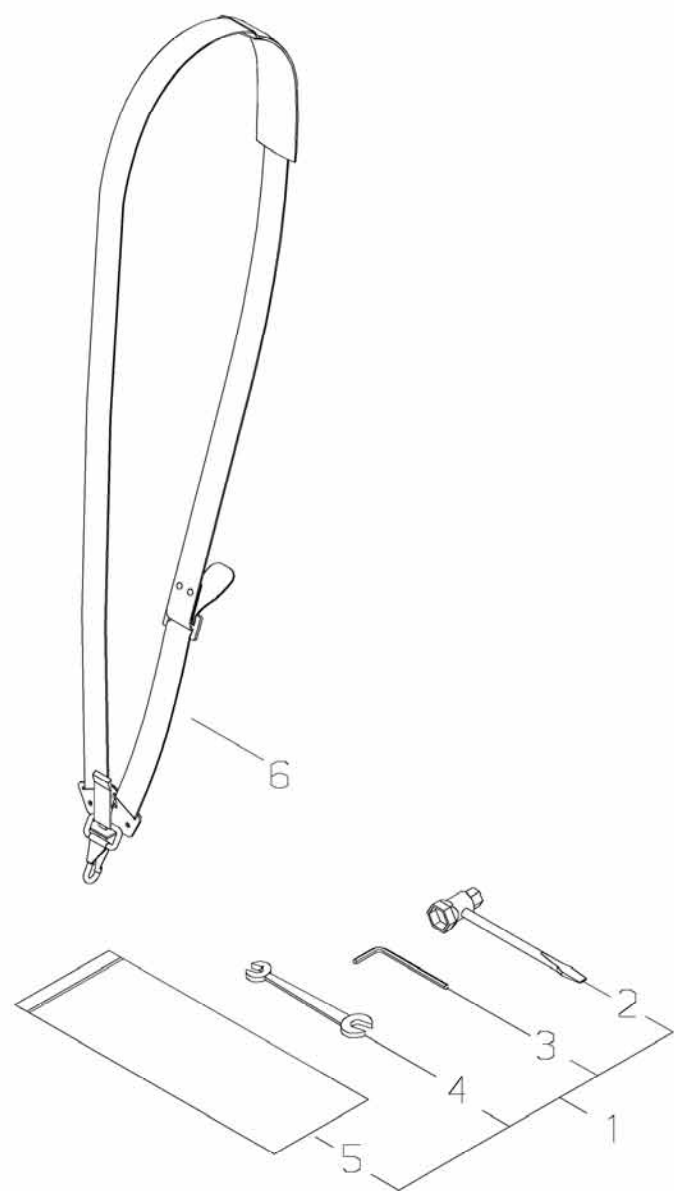
PRICE:(\$)

Ref. No.	Part No.	Part Name	Q`ty	Unit Price(\$)	Remarks
8-1	65005-62010	OUTER PIPE COMP	1		
2	63880-64320	*OUTER PIPE	1		L745
3	22035-12121	*BUSH	3		
4	65006-62310	PROTECTOR	1		
5	63880-64340	MAIN SHAFT	1		
6	37000-62220	JOINT CASE	1		
7	63880-64360	JOINT SHAFT	1		
8	02002-00609	BALL BEARING	1		
9	22420-13350	SNAP RING	1		
10	72030-14130	WASHER	1		
11	17901-06220	COLLAR	1		
12	63880-64380	KNOB	1		
13	63880-64410	NUT	1		
14	37000-62310	LOCK LEVER	1		
15	17500-06001	COIL SPRING	1		
16	37000-62340	COVER	1		
17	17520-12400	COIL SPRING	1		
18	15401-00004	COLLAR	1		
19	11207-05120	SCREW,PM-SLPW	1		M 5 × 1 2
20	22000-13420	SHIM	1		
21	11023-05250	BOLT-DW	1		M 5 × 2 5
22	01020-05120	BOLT	1		M 5 × 1 2
23					
24					
25	37017-62132	GRIP	1		
26	37142-62320	CLAMP	2		
27	11203-04161	SCREW,PM	2		
28	22015-14390	NYLON NUT	2		
29	19401-00168	LABEL,INST	1		
30	33008-62340	HANGER ASSY	1		B2200-2
31	33008-62151	*HANGER	1		B2200-2 SPC,PA6
32	33008-62311	*CLAMP	1		B2200-2 PA6
33	33008-62321	*COLLAR	1		B2200-2 PA6
34	11203-04160	*SCREW,PM	1		M4×16
35	01500-04031	*NUT	1		M4 MFZN3-C



PRICE:(\$)

[illegible]



PRICE:(\$)

[illegible]