

shindaiwa

PARTS PRICE LIST

S B A - A H 2 4 2 2

Shindaiwa Corporation

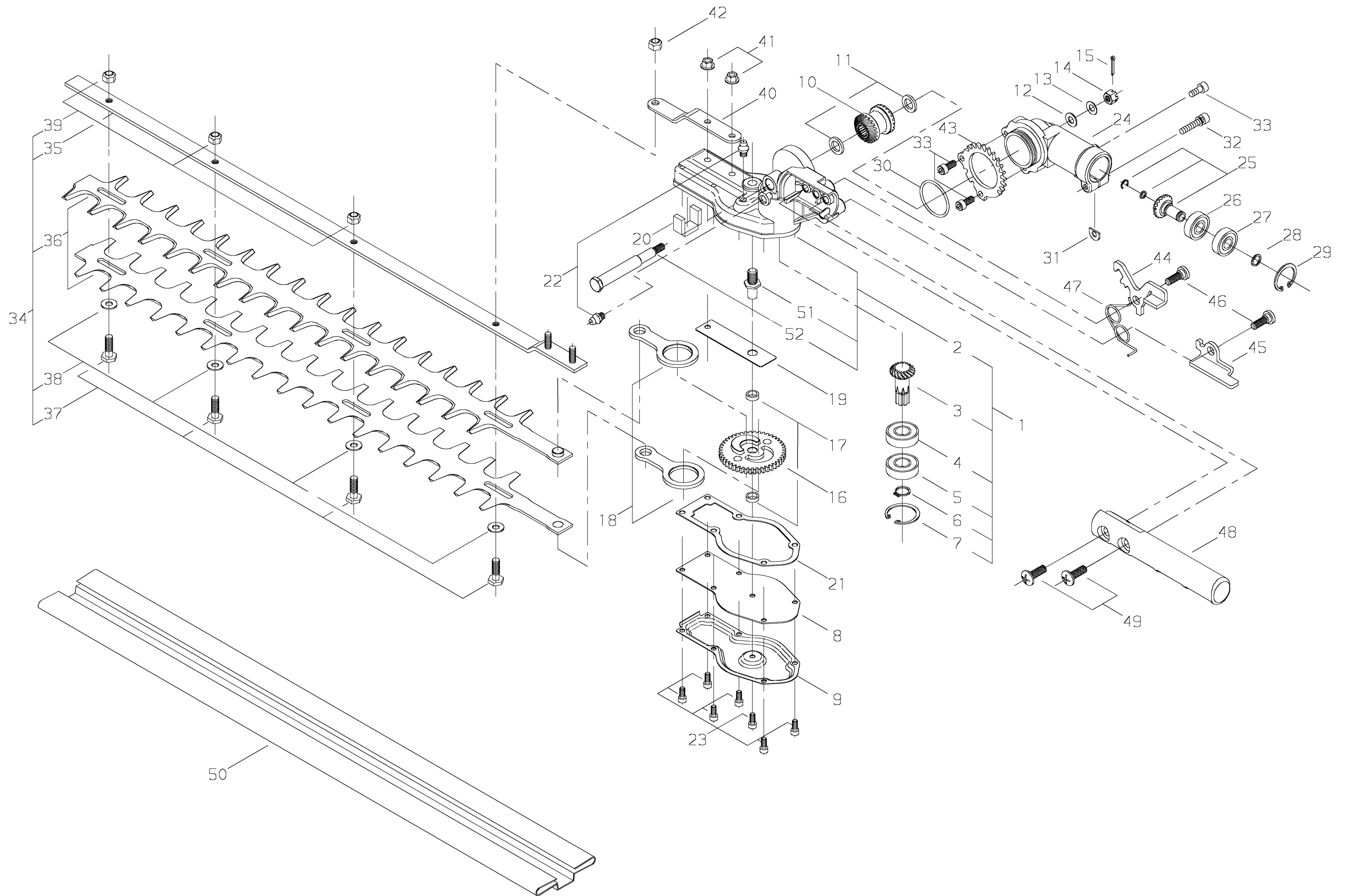
6-2-11,Ozuka-Nishi, Asaminami-ku, Hiroshima, 731-3167, Japan

Telephone (082) 849-2005 Fax (082) 849-2481

S B A - A H 2 4 2 2 / E U

M A R . 2 , 2 0 0 9

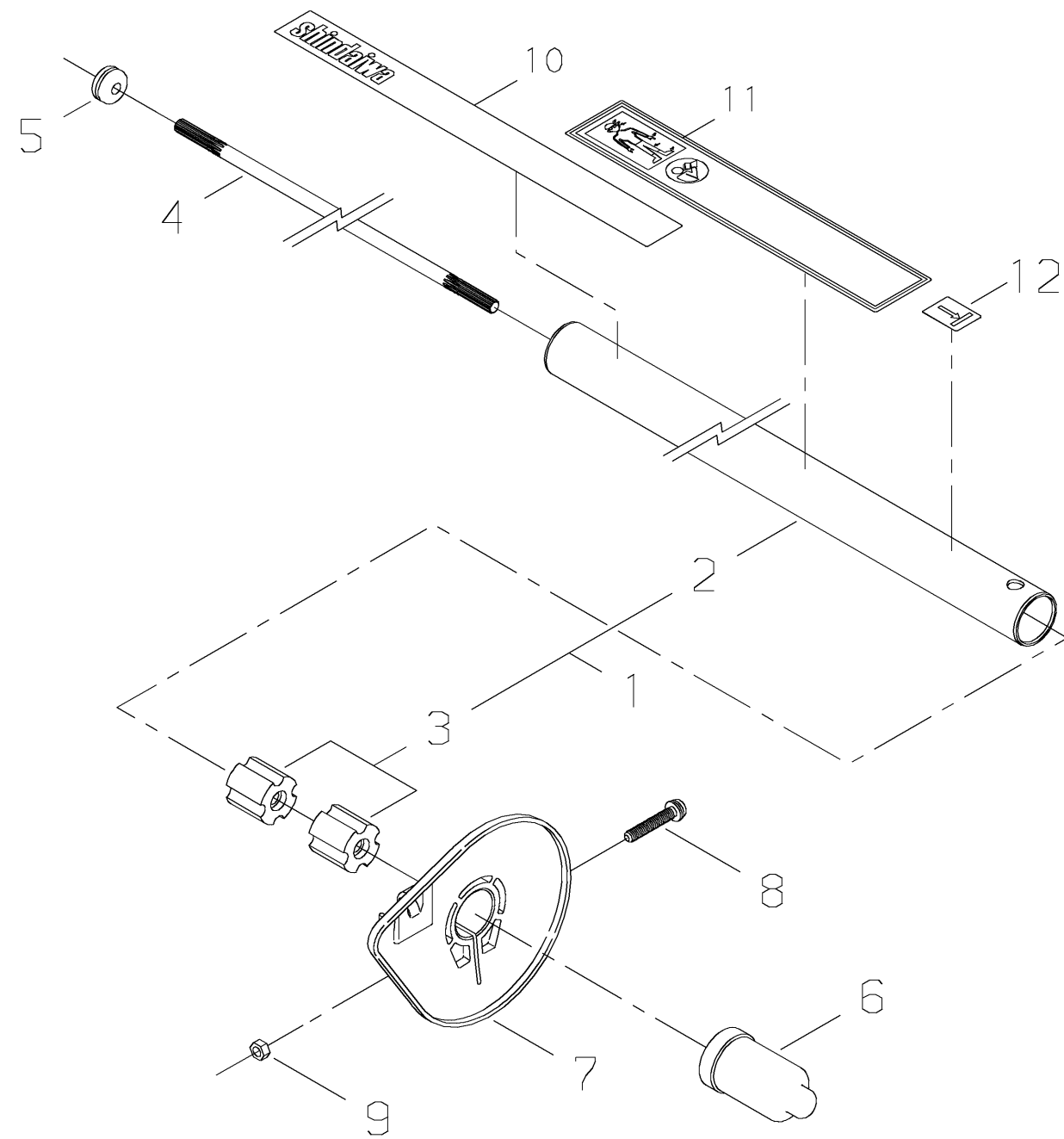
P r i n t e d i n J a p a n



PRICE:(\$)

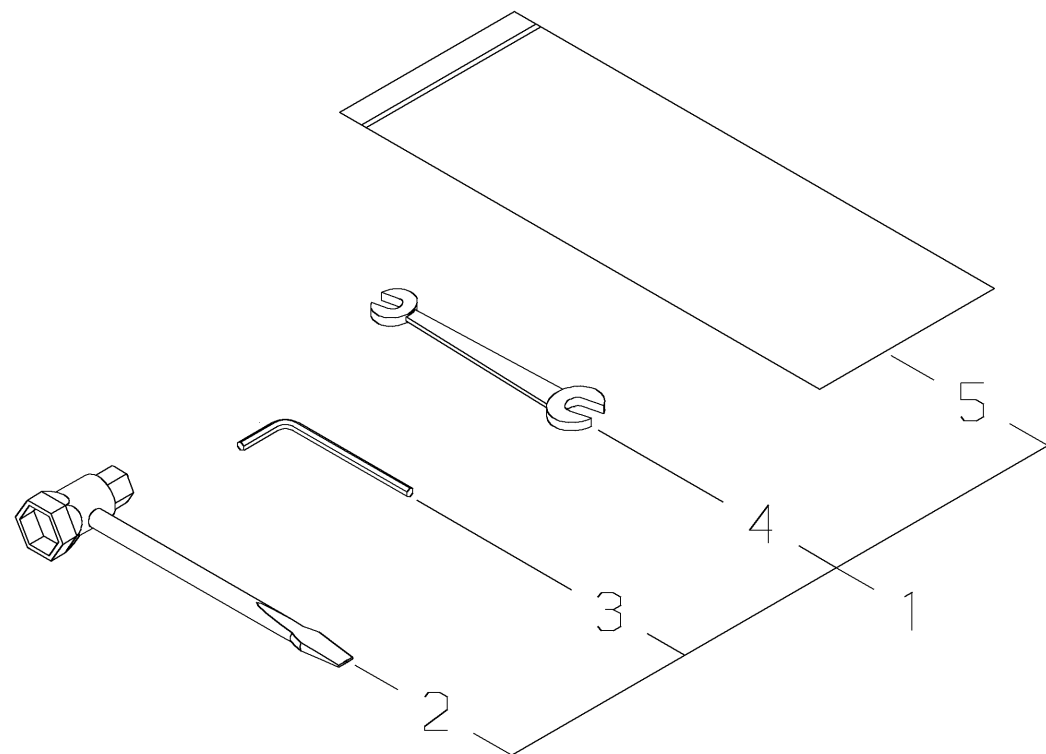
Ref. No.	Part No.	Part Name	Q`ty	Unit Price(\$)	Remarks
1-1	63840-61011	GEAR CASE COMP	1		
2	63840-61111	*GEAR CASE	1		
3	63840-61330	*PINION SHAFT	1		
4	02000-06001	*BALL BEARING	1		6001
5	02002-06001	*BALL BEARING	1		6001ZZ
6	02430-12100	*SNAP RING	1		
7	02432-28120	*SNAP RING	1		
8	68120-61120	CASE COVER	1		
9	63840-61340	COVER	1		
10	63840-61350	BEVEL GEAR	1		
11	15401-11010	COLLAR	2		
12	01613-06100	WASHER	1		φ6
13	20024-81790	CONE WASHER	1		
14	63840-61370	NUT	1		
15	02421-16150	PIN	1		1.6X15
16	68120-61130	CAM GEAR	1		
17	15401-10025	COLLAR	2		
18	68120-61170	ROD	2		
19	68120-61331	PLATE	1		
20	68120-61340	PACKING	1		
21	68120-61351	GASKET	1		
22	20870-61640	GREASE NIPPLE	2		
23	01020-04100	BOLT	7		M4X10
24	63840-63310	GEAR CASE,UPPER	1		
25	63840-63320	BEVEL PINION	1		
26	02000-00609	BALL BEARING	1		609
27	02002-00609	BALL BEARING	1		609ZZ
28	22420-13350	SNAP RING	1		
29	02432-24120	SNAP RING	1		
30	02304-03150	O RING	1		S31.5
31	22000-13420	SHIM	1		
32	11023-05250	BOLT-DW	1		M5X25
33	01020-05120	BOLT	3		M5X12
34	68120-62010	CUTTER ASSY	1		(CARB·EPA·EMC)
34	38121-62010	CUTTER ASSY	1		(CE·YB)
35	18501-50000	*GUIDE BAR	1		
36	18500-50100	*BLADE	2		(CARB·EPA·EPA2·EMC)
36	18500-50102	*BLADE	2		(CE·YB)

PRICE:(\$)
[illegible]



PRICE:(\$)

[illegible]



PRICE:(\$)
[illegible]