

shindaiwa

PARTS PRICE LIST

S B A - P 2 4

Shindaiwa Corporation

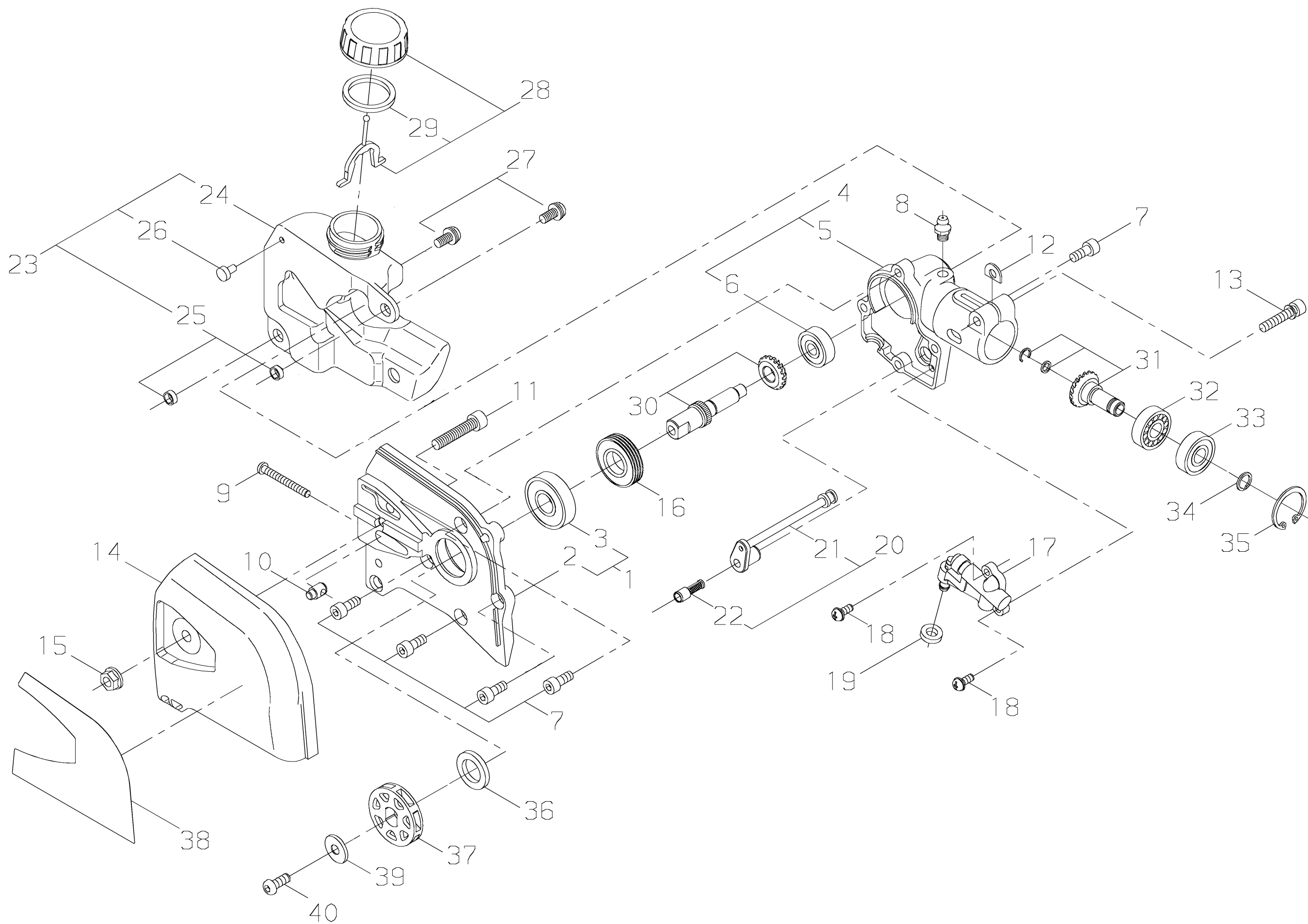
6-2-11,Ozuka-Nishi, Asaminami-ku, Hiroshima, 731-3167, Japan

Telephone (082) 849-2005 Fax (082) 849-2481

S B A - P 2 4 / E U

M A R . 2 , 2 0 0 9

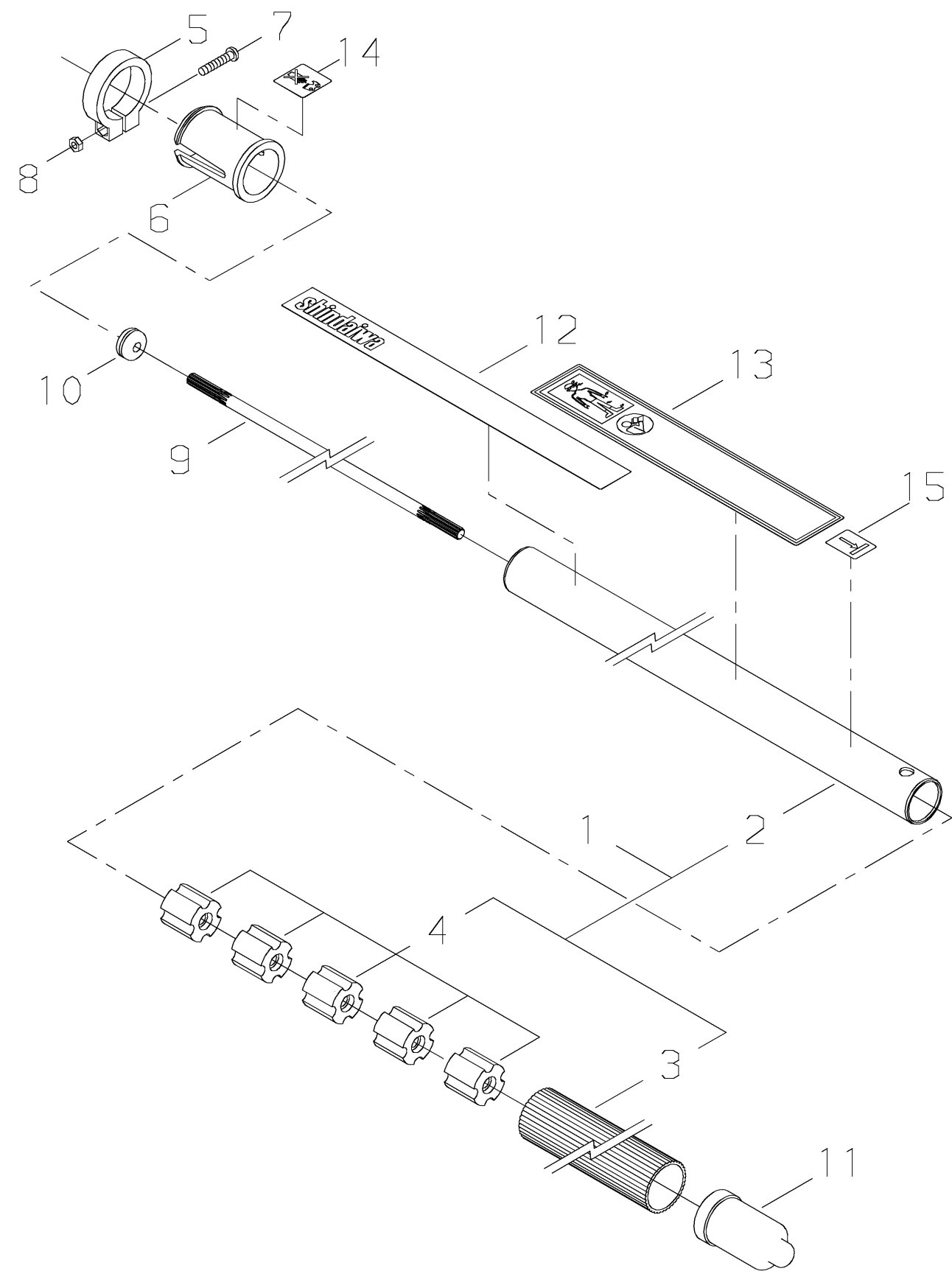
P r i n t e d i n J a p a n



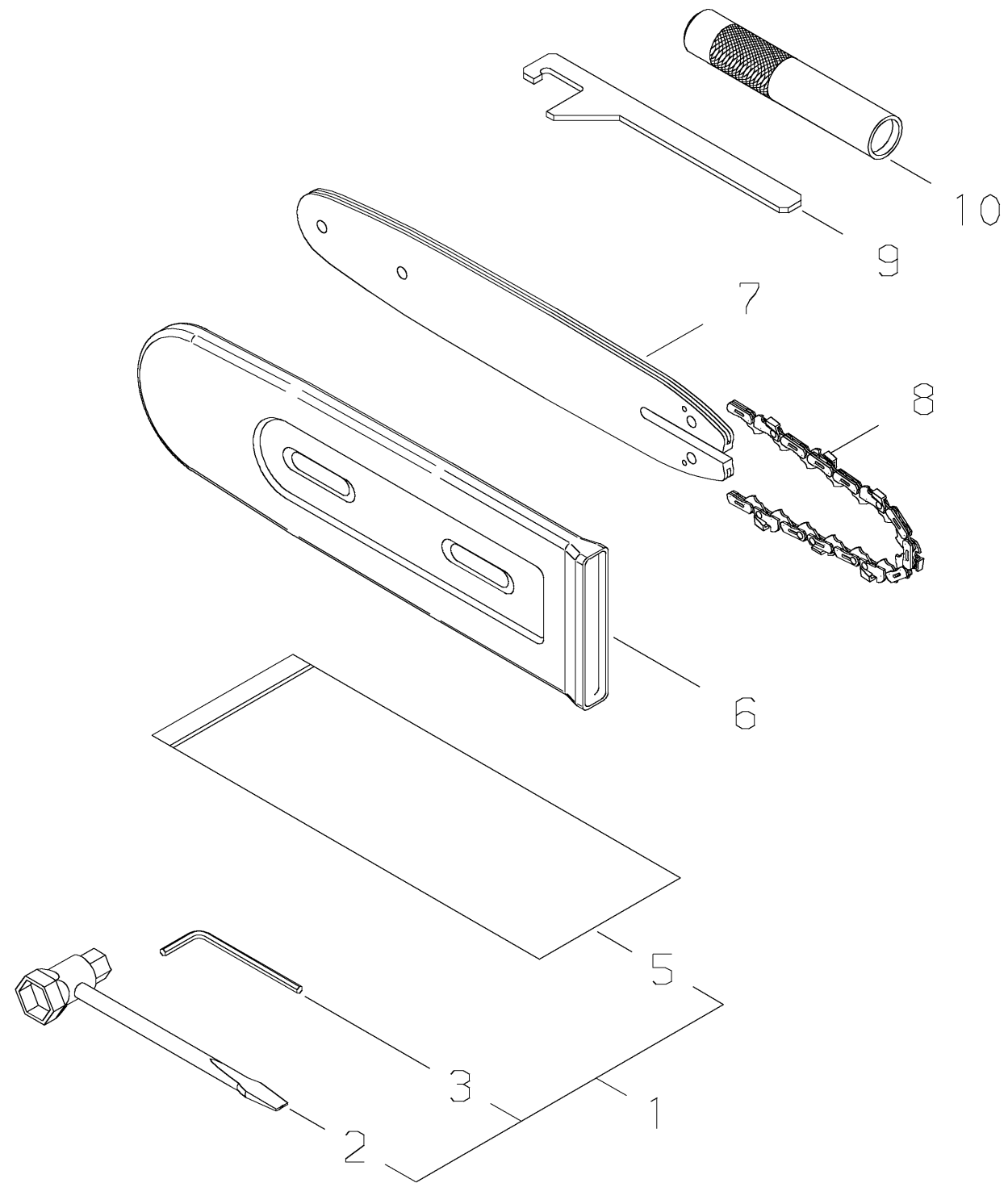
PRICE:(\$)

Ref. No.	Part No.	Part Name	Q`ty	Unit Price(\$)	Remarks
1-1	63880-61312	GEAR CASE,LEFT COMP	1		
2	63880-61322	*GEAR CASE,LEFT	1		
3	02006-06001	*BALL BEARING	1		6001DDU
4	63880-61332	GEAR CASE,RIGHT COMP	1		
5	63880-61342	*GEAR CASE,RIGHT	1		
6	02002-00627	*BALL BEARING	1		627ZZ
7	01020-05120	BOLT	5		M5X12
8	20870-61640	GREASE NIPPLE	1		
9	11260-04351	SCREW,ADHESIVE	1		M4X35
10	17110-04000	SLIDE PIECE	1		
11	01020-06300	BOLT	1		M6X30
12	22000-13420	SHIM	1		
13	11023-05250	BOLT-DW	1		M5X25
14	63880-61350	BAR HOLDER	1		
15	11526-06100	FLANGE NUT	1		M6
16	63880-62310	WORM GEAR	1		
17	22197-55201	OIL PUMP ASSY	1		
18	11205-04100	SCREW,PM-PW	2		M4X10
19	63880-62320	GASKET, PUMP	1		
20	63880-62330	OIL PIPE ASSY	1		
21	63880-62340	*OIL PIPE	1		
22	63880-62350	*FILTER	1		
23	63880-62361	OIL TANK ASSY	1		
24	63880-62381	*OIL TANK	1		
25	17901-06030	*COLLAR	2		
26	22115-57120	*VALVE,OIL TANK	1		
27	11207-05120	SCREW,PM-SLPW	2		M5X12
28	63880-62391	OIL CAP ASSY	1		
29	70030-85221	*GASKET	1		
30	63880-63011	GEAR SHAFT	1		
31	63880-63020	BEVEL PINION	1		
32	02000-00609	BALL BEARING	1		609
33	02002-00609	BALL BEARING	1		609ZZ
34	22420-13350	SNAP RING	1		
35	02432-24120	SNAP RING	1		
36	15401-21020	COLLAR	1		
37	12032-07102	SPROCKET	1		
38	19402-00180	LABEL,CAUTION	1		

PRICE:(\$)
[illegible]



PRICE:(\$)
[illegible]



PRICE:(\$)
[illegible]